

FOR LEASE

# GOLDEN RING EXECUTIVE PARK

21

FONTANA LANE

Baltimore, MD 21237



## AVAILABLE SPACE FEATURES

- + 5,156 SF Available
- + 750 SF Office
- + 1 Dock Door
- + 18' Ceiling Height
- + 35'w x 41'd Column Spacing
- + Wet Sprinkler System
- + Masonry Construction
- + MLR, IM Zoning



## CONTACT US

### JON CASELLA

First Vice President  
+1 410 244 3127  
jon.casella@cbre.com

### TOBY MINK

Senior Vice President  
+1 410 244 3171  
toby.mink@cbre.com

### JUSTIN MOHLER

First Vice President  
+1 410 244 3116  
justin.mohler@cbre.com

### LUKE WILSON

Vice President  
+1 410 244 3126  
luke.wilson@cbre.com

Owned by

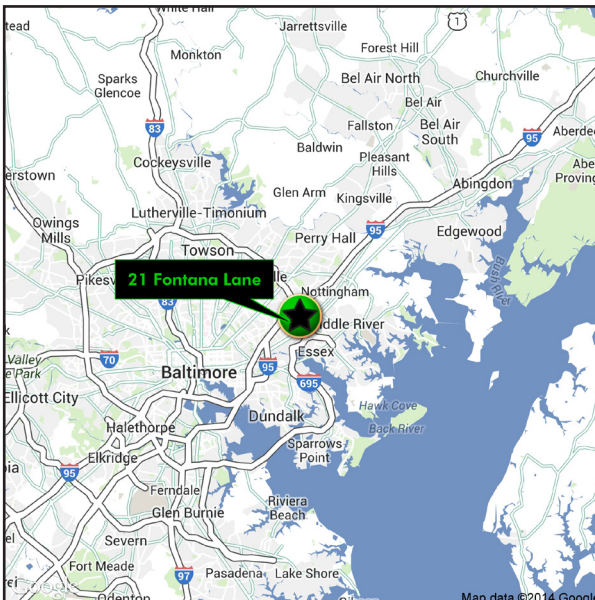
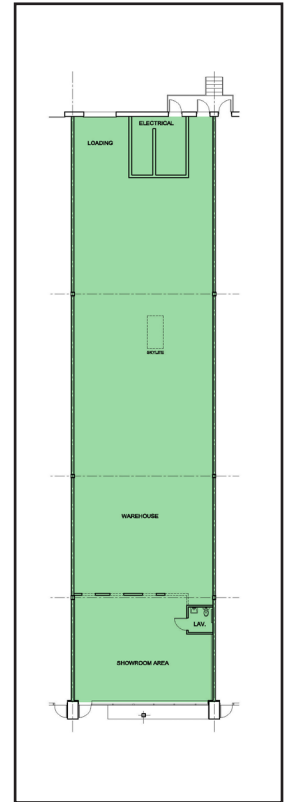
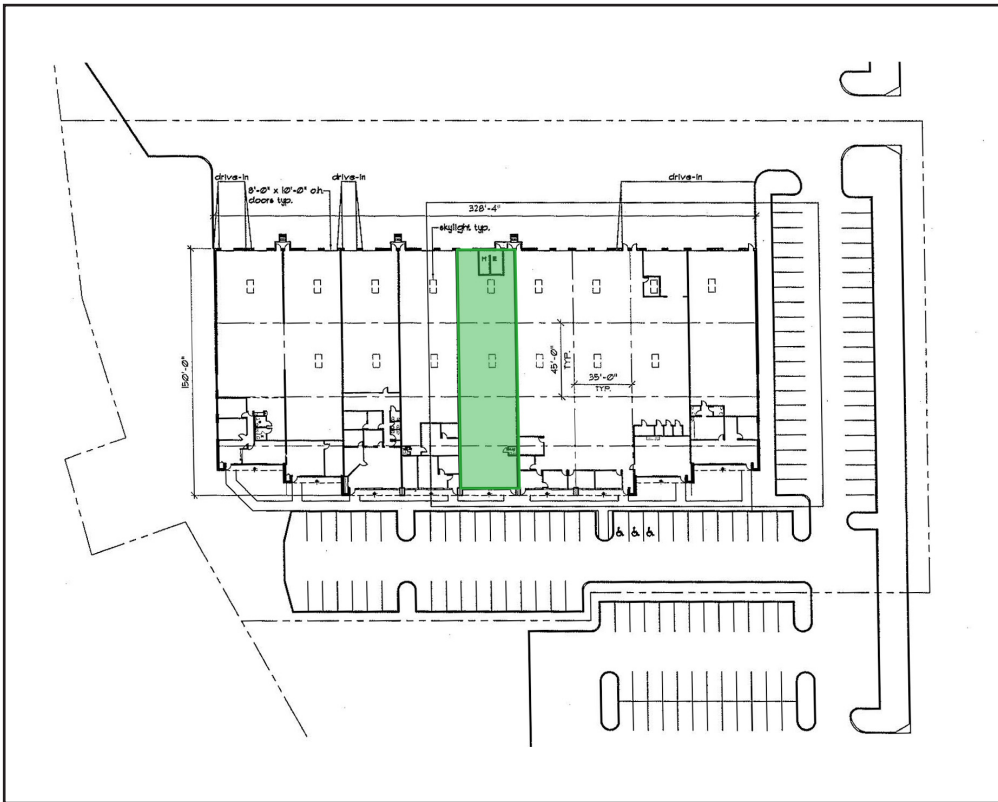


[www.cbre.com/baltimore](http://www.cbre.com/baltimore)

**CBRE**

# FOR LEASE SMALL BAY SPACE

**21**  
**FONTANA LANE**  
Baltimore, MD 21237



## TRAVEL DISTANCES/TIMES

- I-695 - 0.7 miles / 2 minutes
- Route 40 - 0.7 miles / 3 minutes
- I-95 - 2 miles / 3 minutes
- 295 - 13.6 miles / 16 minutes
- Port of Baltimore - 14.4 miles / 20 minutes
- BWI - 20.3 miles / 24 minutes

© 2018 CBRE, Inc. The information contained in this document has been obtained from sources believed reliable. While CBRE, Inc. does not doubt its accuracy, CBRE, Inc. has not verified it and makes no guarantee, warranty or representation about it. It is your responsibility to independently confirm its accuracy and completeness. Any projections, opinions, assumptions or estimates used are for example only and do not represent the current or future performance of the property. The value of this transaction to you depends on tax and other factors which should be evaluated by your tax, financial and legal advisors. You and your advisors should conduct a careful, independent investigation of the property to determine to your satisfaction the suitability of the property for your needs.

Photos herein are the property of their respective owners and use of these images without the express written consent of the owner is prohibited.