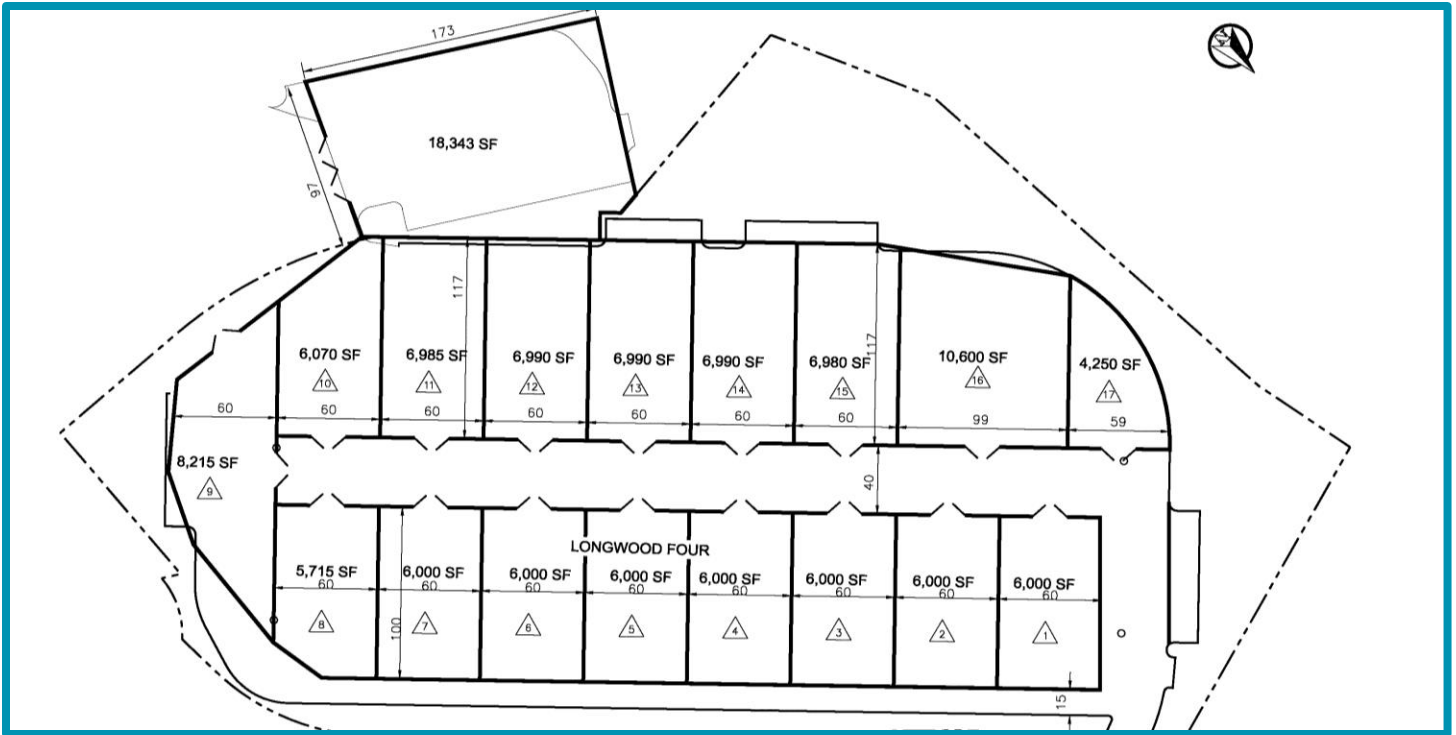


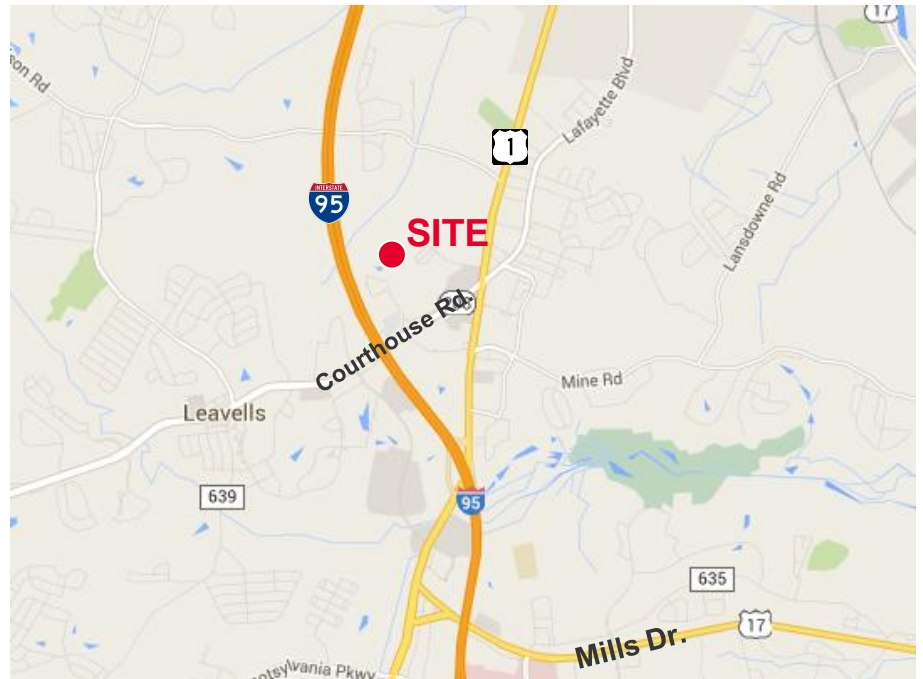
FOR LEASE
Longwood Four

Houser Drive | Fredericksburg, VA 22408



Property Features

- Fenced storage lots with barbed wire for security
- Brand new with crushed stone throughout
- Phase 1 – four 6,000 SF lots
- Phase 2 – eight 6,000 SF lots
 - Can be combined
- At the end of Houser Dr in Four Mile Fork



Specifications	
Available SF	72,000 SF in 6,000 SF lots
Lease Rate	\$1.00 PSF
Timing	Available immediately

For more information, contact:

VIRGIL NELSON, CCIM
 540 322 4150
 virgil.nelson@thalhimer.com

Eagle Village
 1125 Jefferson Davis Highway, Suite 350
 Fredericksburg, VA 22401
 www.thalhimer.com