

1972 | OFFICE SPACE FOR LEASE

MASS AVE.
CAMBRIDGE, MA

2,600 SF to 13,000 SF



Stephanie Deering | c. 781.608.5964 | sdeering@abgrealty.com

Bernard Gibbons | c. 617.212.1396 | bernard@abgrealty.com

307 Cambridge Street, Cambridge MA 02141 | www.abgrealty.com

PROPERTY DESCRIPTION

Prime Location Office Space, conveniently located in Porter Sq., Cambridge, 5 minutes from Davis Sq. and Harvard Sq., and just a short 2 block walk from the Red Line T-Stop.

Offering a flexible floor configuration from 2,600 to 13,000 sq. ft. available on 3 floors; ADA restrooms, kitchenette and open floor plan with abundant natural lighting. Building amenities include upgraded lobby and common areas, elevator, parking, bike racks and more. Perfect tenant space for a Technology, Insurance, Legal or a Non-profit Organization.



SPACES AVAILABLE

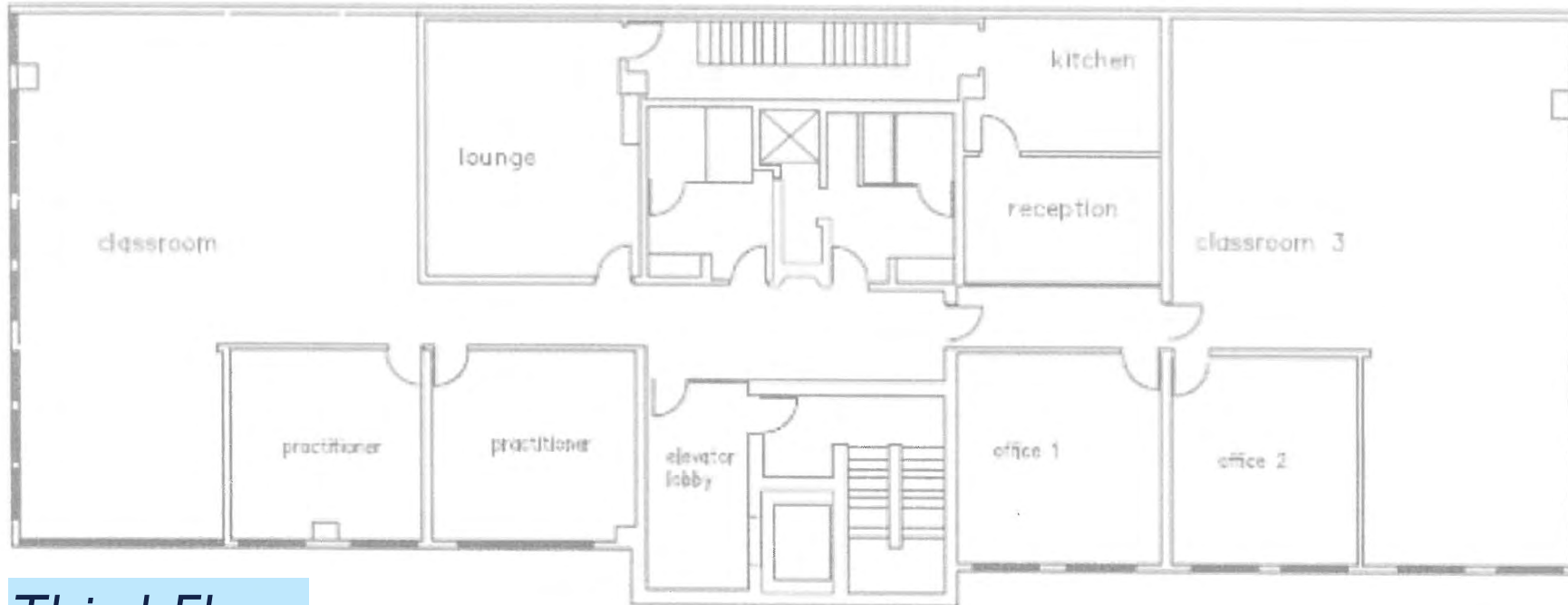
- 2,600 SF - 4th floor
- 5,200 SF - 3rd floor
(can be subdivided to 2,600 SF)
- 5,200 SF - 2nd floor
(can be subdivided to 2,600 SF)



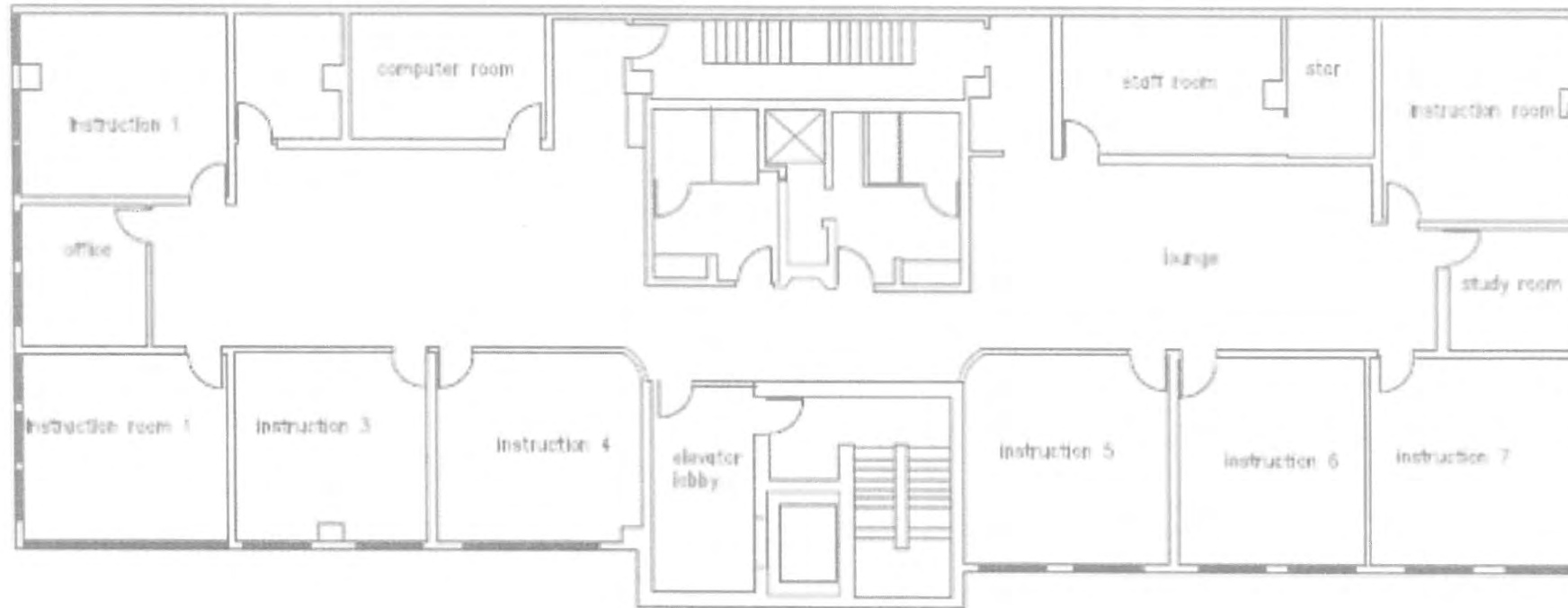
Stephanie Deering | c. 781.608.5964 | sdeering@abgrealty.com
Bernard Gibbons | c. 617.212.1396 | bernard@abgrealty.com
307 Cambridge Street, Cambridge MA 02141 | www.abgrealty.com

FLOOR PLANS

Second Floor



Third Floor



Fourth Floor

