

FOR LEASE

Raintree North Shopping Center

261 SW Greenwich Drive, Lee's Summit, MO 64082



- 17,480 +/- SF adjacent to high volume grocery store
- Price Chopper recently expanded to 75,000 SF
- Dock-high loading door
- Excellent access to 150 Hwy and 291 Hwy
- Walmart Super Center recently opened to the north
- All small shop retail in the center is 100% leased
- Lee's Summit's growth is accelerating south, 1,150 new single-family homes to be built in 2020 & 2021

Adam Lyngar
adam@cadencekc.com
913.747.3326

Lynette Russ
lynette@cadencekc.com
913.747.3309

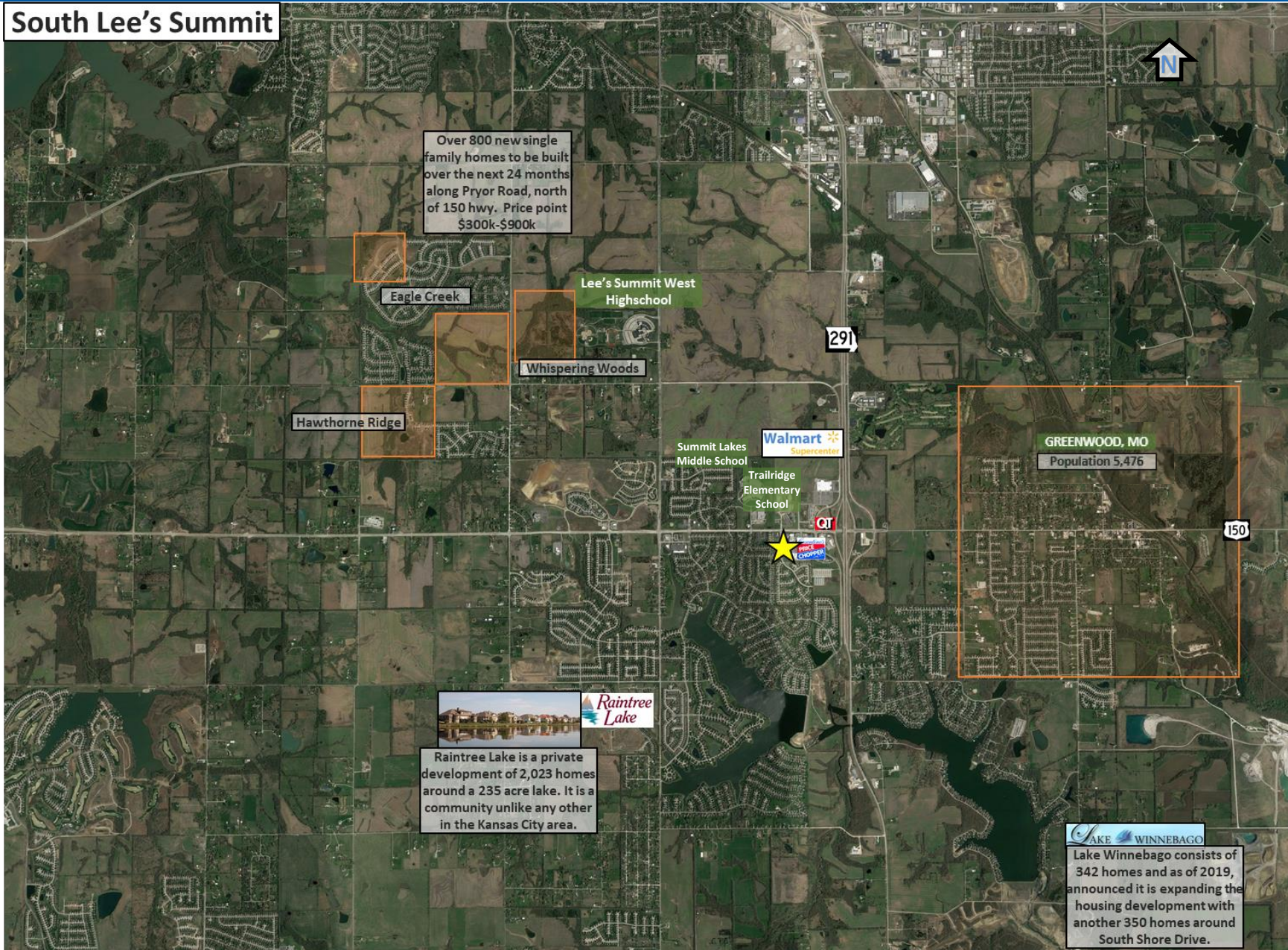


FOR LEASE

Raintree North Shopping Center

261 SW Greenwich Drive, Lee's Summit, MO 64082

South Lee's Summit



Over 800 new single family homes to be built over the next 24 months along Pryor Road, north of 150 hwy. Price point \$300k-\$900k

Eagle Creek

Lee's Summit West High School

Whispering Woods

Hawthorne Ridge

Summit Lakes Middle School

Walmart Supercenter

Trailridge Elementary School

GREENWOOD, MO
Population 5,476



Raintree Lake

Raintree Lake is a private development of 2,023 homes around a 235 acre lake. It is a community unlike any other in the Kansas City area.

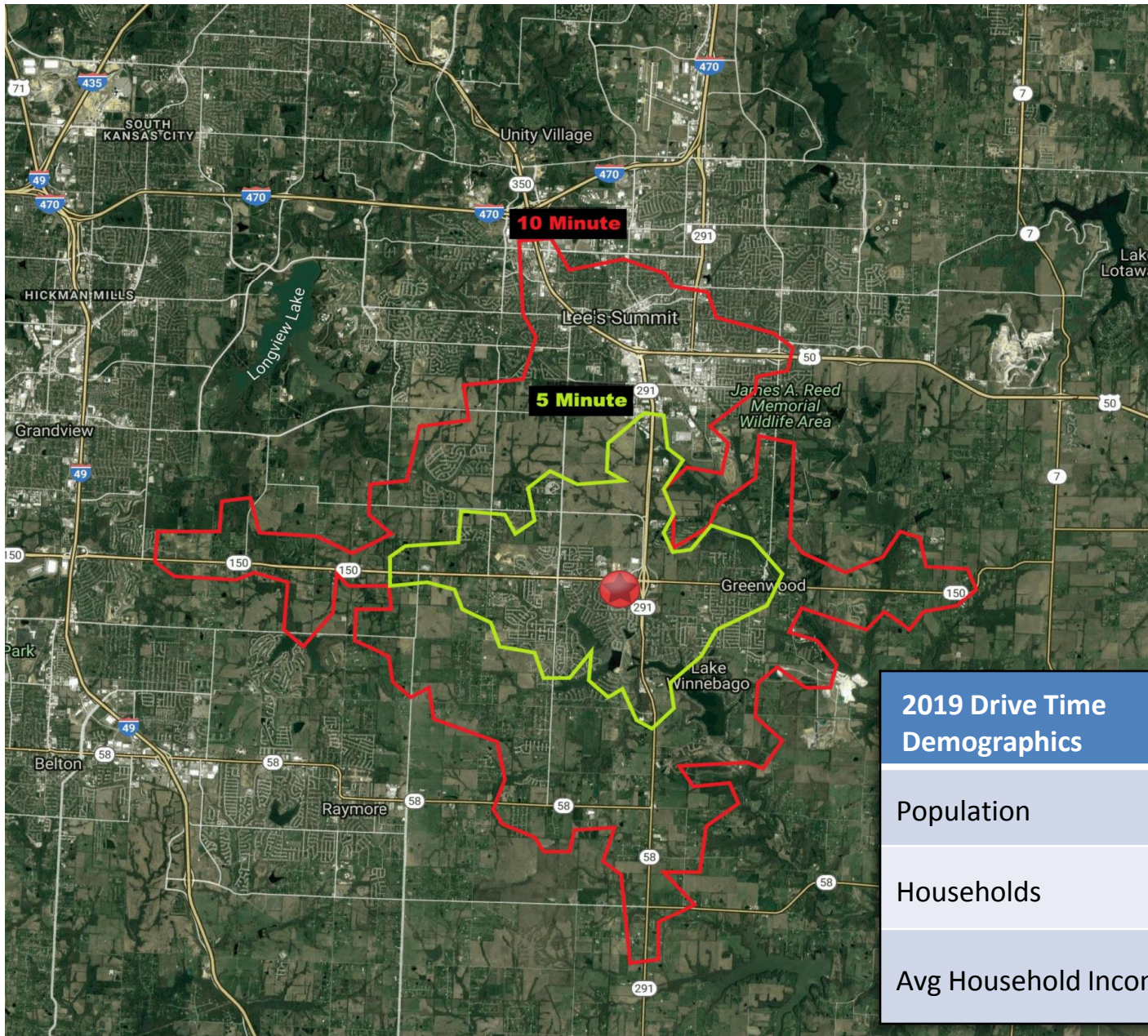
LAKE WINNEBAGO

Lake Winnebago consists of 342 homes and as of 2019, announced it is expanding the housing development with another 350 homes around South Shore Drive.

FOR LEASE

Raintree North Shopping Center

261 SW Greenwich Drive, Lee's Summit, MO 64082



| 2019 Drive Time Demographics | 5 minute | 10 minute |
|------------------------------|-----------|-----------|
| Population | 15,936 | 44,667 |
| Households | 5,918 | 18,068 |
| Avg Household Income | \$110,001 | \$94,421 |

FOR LEASE

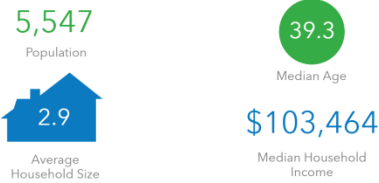
Raintree North Shopping Center 261 SW Greenwich Drive, Lee's Summit, MO 64082

2019 Demographics

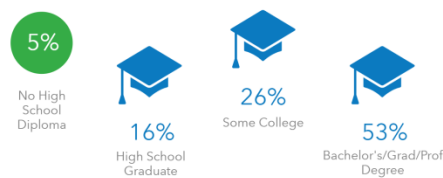
1 Mile

3 Miles

KEY FACTS



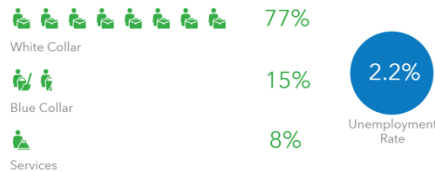
EDUCATION



BUSINESS



EMPLOYMENT



INCOME



Households By Income

The largest group: \$100,000 - \$149,999 (36.3%)
The smallest group: \$15,000 - \$24,999 (3.2%)

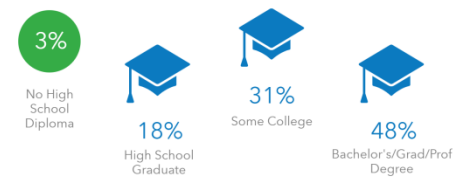
| Indicator | Value | Difference | |
|-----------------------|-------|------------|--|
| <\$15,000 | 3.6% | -1.9% | |
| \$15,000 - \$24,999 | 3.2% | -4.6% | |
| \$25,000 - \$34,999 | 4.3% | -4.0% | |
| \$35,000 - \$49,999 | 6.9% | -5.3% | |
| \$50,000 - \$74,999 | 12.7% | -8.2% | |
| \$75,000 - \$99,999 | 14.5% | -0.6% | |
| \$100,000 - \$149,999 | 36.3% | +19.3% | |
| \$150,000 - \$199,999 | 10.8% | +1.8% | |
| \$200,000+ | 7.6% | +3.5% | |

Bars show deviation from Cass County

KEY FACTS



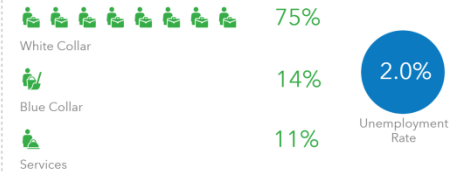
EDUCATION



BUSINESS



EMPLOYMENT



INCOME



Households By Income

The largest group: \$100,000 - \$149,999 (30.4%)
The smallest group: <\$15,000 (2.6%)

| Indicator | Value | Difference | |
|-----------------------|-------|------------|--|
| <\$15,000 | 2.6% | -2.9% | |
| \$15,000 - \$24,999 | 3.4% | -4.4% | |
| \$25,000 - \$34,999 | 5.0% | -3.3% | |
| \$35,000 - \$49,999 | 7.0% | -5.2% | |
| \$50,000 - \$74,999 | 14.1% | -6.8% | |
| \$75,000 - \$99,999 | 14.8% | -0.3% | |
| \$100,000 - \$149,999 | 30.4% | +13.4% | |
| \$150,000 - \$199,999 | 12.9% | +3.9% | |
| \$200,000+ | 9.9% | +5.8% | |

Bars show deviation from Cass County

Adam Lyngar
adam@cadencekc.com
913.747.3326

Lynette Russ
lynette@cadencekc.com
913.747.3309

