

23 Madison Road Fairfield, NJ



OFFICE SPACE AVAILABLE FOR LEASE

PROPERTY SPECS:

Available Space:

- Unit 1 – 1,500 SF
- Unit 2 – 1,980 SF
- Units can be combined for 3,480 SF

Total Building Size: 42,792 SF

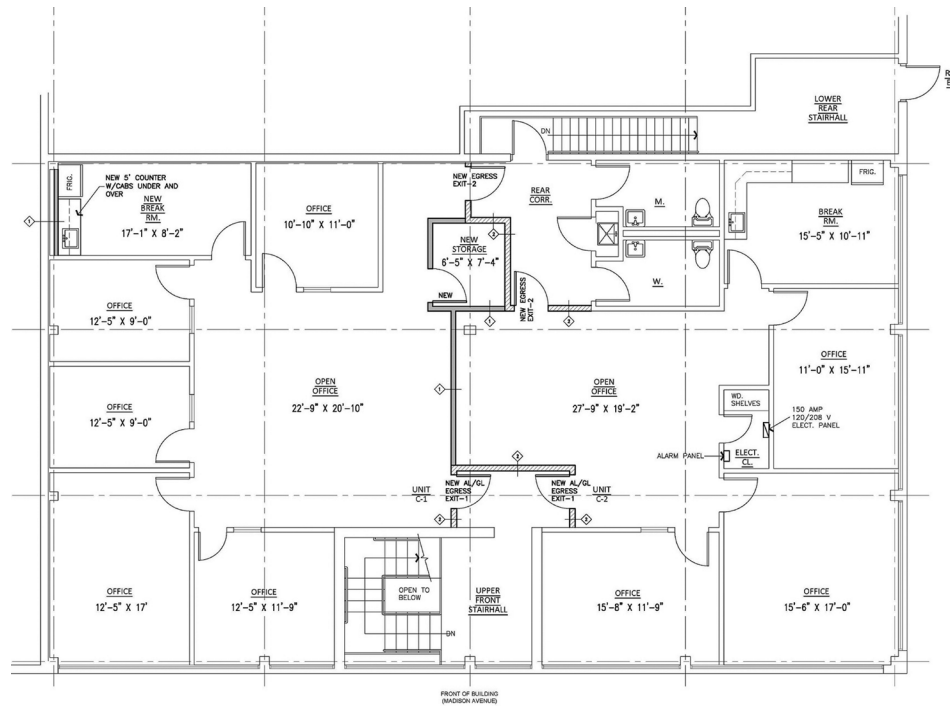
Possession: Immediate

Lease Rate: \$14.00 PSF Gross + TE

Parking: 3/1,000 SF

Comments:

Below market rental rate. Convenient to all major highways. Highly usable floor plan, and well maintained building.



For more information, please contact:

Gregory J. Sabato
gsabato@resource-realty.com

973-299-0900

Exclusive Leasing Agent:



Resource Realty
Corporate Real Estate Services

www.resource-realty.com