

MEDICAL OFFICE FOR LEASE ON LEE HWY

14370 Lee Highway
Gainesville, VA 20155



5,700 SF Medical office suite for lease on Lee Highway in Gainesville VA. Space includes 4 offices, 12 exam rooms, 2 nursing stations, private bathrooms, conference room, reception and lounge. Building is highly visible from US-29, Lee Highway, and has signage opportunities. Space can be subdivided to as small as 2,000 sf and additional space is available for larger users. Owner will provide a turn key remodel if needed. Vacant and ready for immediate occupancy.

Lease Rate: \$22.00- \$24.00 PSF, Full Service Less Cleaning

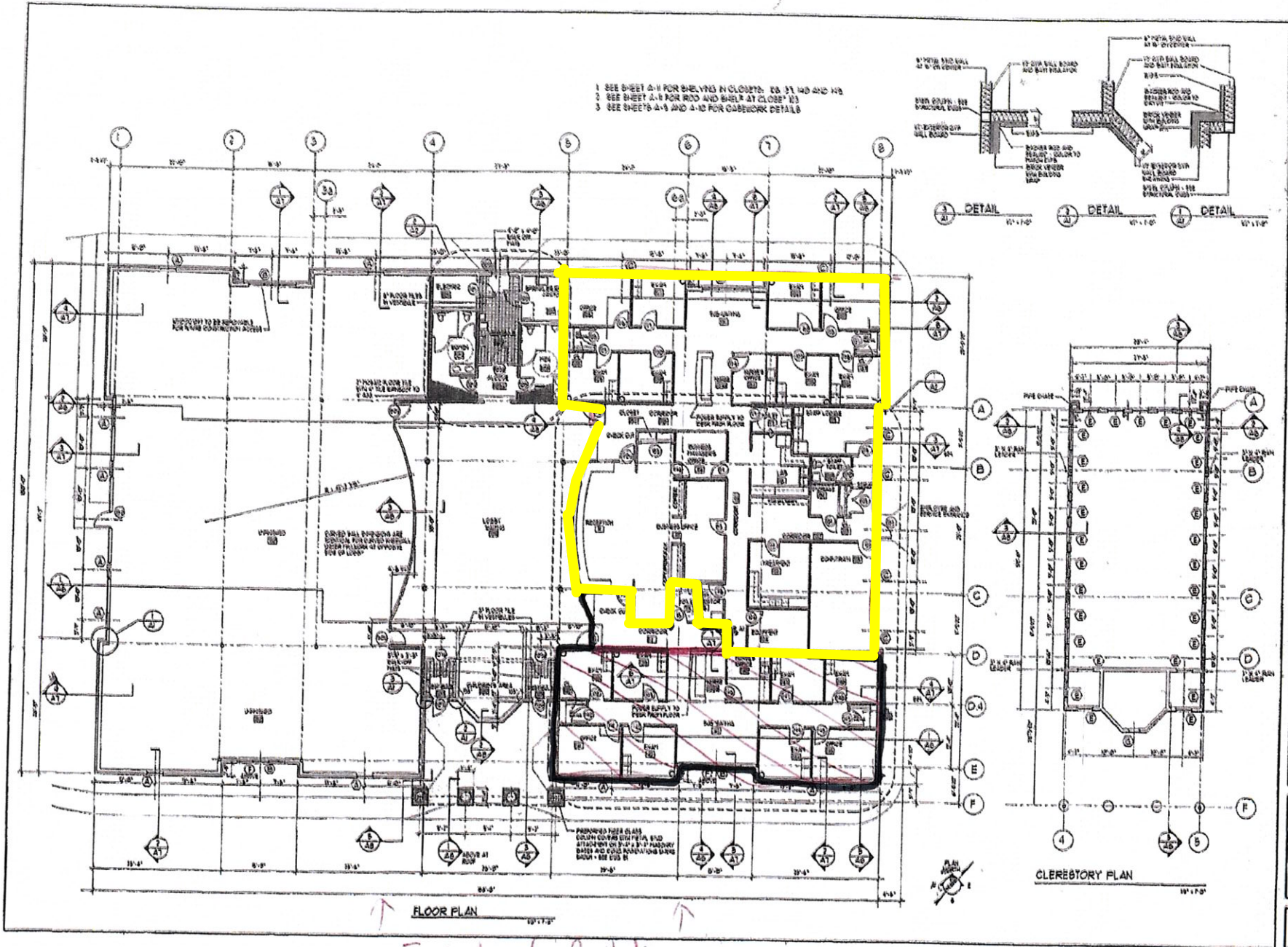


Edward B. Wright, III

9009 Sudley Road
Manassas, Virginia 20110

Phone: 703-368-8136
Fax: 703-368-7238
Email: ebw@wright-realty.com
Website: www.wright-realty.com

Offering subject to errors, omissions, prior sale, change in price, or withdrawal without notice.



↑ FLOOR PLAN ↑
 Front of Building

MEDICAL OFFICE BUILDING
 14370 LEE HIGHWAY ROUTE 29
 GAINESVILLE, VIRGINIA 20155
 PRINCE WILLIAM COUNTY

ROBERT B. LOVELESS, AIA
 ARCHITECTS
 1000 QUINCY STREET, ANNANDALE, VA 22002-3000

FLOOR PLAN

DATE:	3-14-87	PLN/1
REVISIONS:	3-14-87	BOON/1

A-1
 OF 18

