

LAND
FOR SALE



PERKINS DRIVE

110 Perkins Drive, Chapel Hill, NC

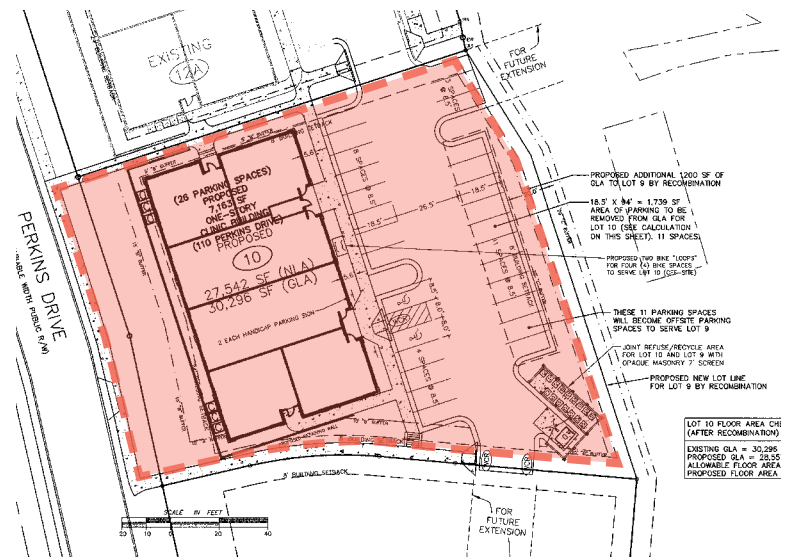
UNIQUE OPPORTUNITY TO FAST TRACK DEVELOPMENT WITH APPROVED SITE + PLANS

The immediate area has a dense medical presence within the neighboring commercial properties. Less than half a mile from I-40, the site is centralized and convenient, located at the intersection of Martin Luther King Jr Parkway and Weaver Dairy Road, which serve as the area's main thoroughfares and connectors to other tertiary markets. Walkable and nearby amenities include Timberlyne Shopping Center, Chapel Hill North, and Caraway Village (currently underway) providing approximately 352,167 SF of retail, eateries, and services.

PROPERTY HIGHLIGHTS

- » 0.61 acres with approved site plan for 7,163 SF building with 36 parking spaces
- » PIN: 9880363150
- » All utilities available
- » Zoning: MU-OI-1

SALES PRICE
\$399,000



CONTACT:

Sam DiFranco Jr | 919.674.3699 | sdifrancojr@trinity-partners.com

Dylan Heafner | 919.415.4394 | dheafner@trinity-partners.com



trinity-partners.com

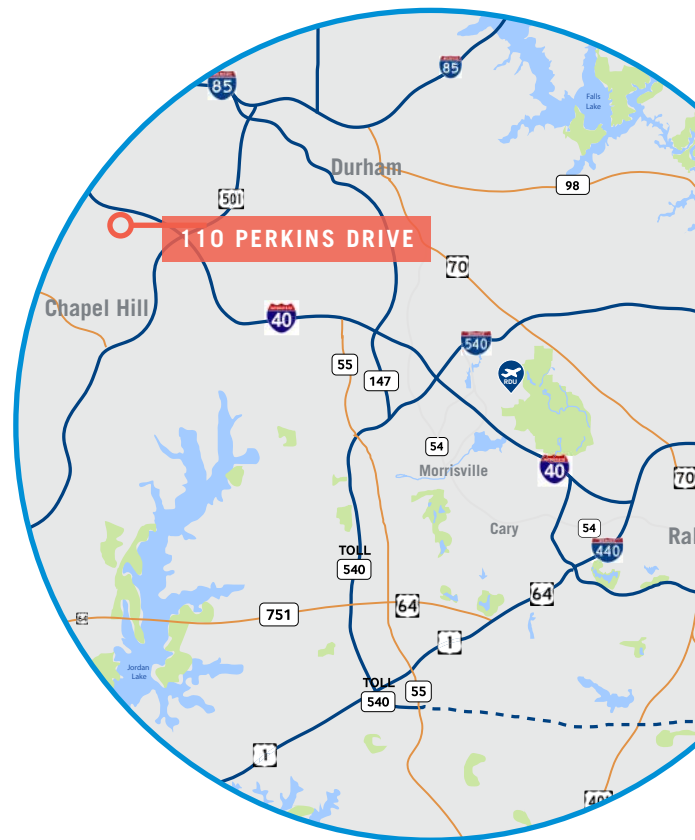
PERKINS DRIVE

110 Perkins Drive, Chapel Hill, NC



DEMOGRAPHICS

	1 MILE	3 MILE	5 MILE
TOTAL BUSINESSES	242	1,430	3,638
TOTAL EMPLOYEES	2,806	28,138	92,995
POPULATION	6,312	32,488	96,759
HOUSEHOLDS	2,224	12,733	37,272
MEDIAN HOUSEHOLD INCOME	\$110,998	\$80,630	\$58,471



The information contained herein was obtained from sources believed reliable; however, Trinity Partners makes no guarantees, warranties, or representations as to the completeness or accuracy thereof. The presentation of this property is submitted subject to errors, omissions, changes of price or conditions prior to sale or lease, or withdrawal without notice.

CONTACT:

Sam DiFranco Jr | 919.674.3699 | sdifrancojr@trinity-partners.com
 Dylan Heafner | 919.415.4394 | dheafner@trinity-partners.com

