

# 1833

South Coast Highway

## *available for lease*

1,147 SQUARE FOOT RETAIL SPACE IN LAGUNA BEACH



Contact Exclusive Agents:

**RYAN HARMAN**  
Senior Vice President  
License ID# 01399616  
(949) 790-3136  
rharman@leeirvine.com

**KEVIN BAYLESS**  
Vice President  
License ID# 01788899  
(949) 790-3142  
kbayless@leeirvine.com



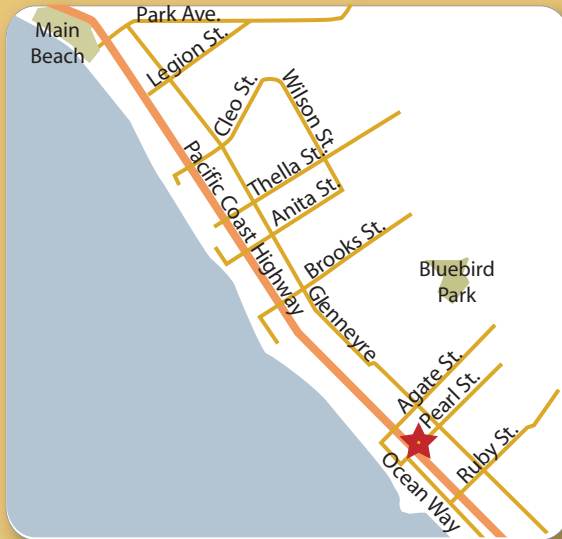
COMMERCIAL REAL ESTATE SERVICES

COASTAL INVESTMENT GROUP

9838 Research Drive | Irvine, California 92618 | [www.lee-associates.com](http://www.lee-associates.com)

# 1833

South Coast Highway



For More Information, Please Contact:

**RYAN HARMAN**  
Senior Vice President  
License ID# 01399616  
(949) 790-3136  
rharman@leeirvine.com

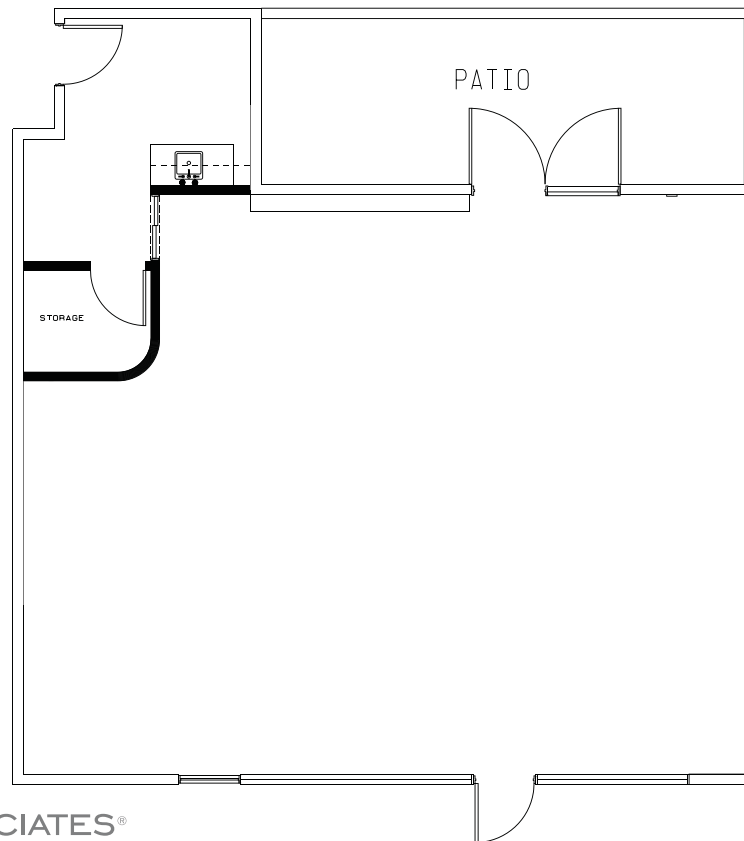
**KEVIN BAYLESS**  
Vice President  
License ID# 01788899  
(949) 790-3142  
kbayless@leeirvine.com

## *available for lease*

1,147 SQUARE FOOT RETAIL SPACE IN LAGUNA BEACH

### *Property Features:*

- 1,147 SF, modern architecture design
- PCH frontage / street level
- Open floor plan
- High-end improvements
- Currently a fitness studio
- Affluent local demographic
- Reserved parking
- Heavy walking traffic
- Elevator-served



**LEE & ASSOCIATES®**  
COMMERCIAL REAL ESTATE SERVICES

**COASTAL INVESTMENT GROUP**

No warranty or representation is made to the accuracy of the foregoing information. Terms of sale or lease and availability are subject to change or withdrawal without notice.