



# ± 6.83 ACRES IN GARDENDALE

GARDENDALE (BIRMINGHAM), ALABAMA



## SALE

940 Fieldstown Road  
Gardendale, AL 35071

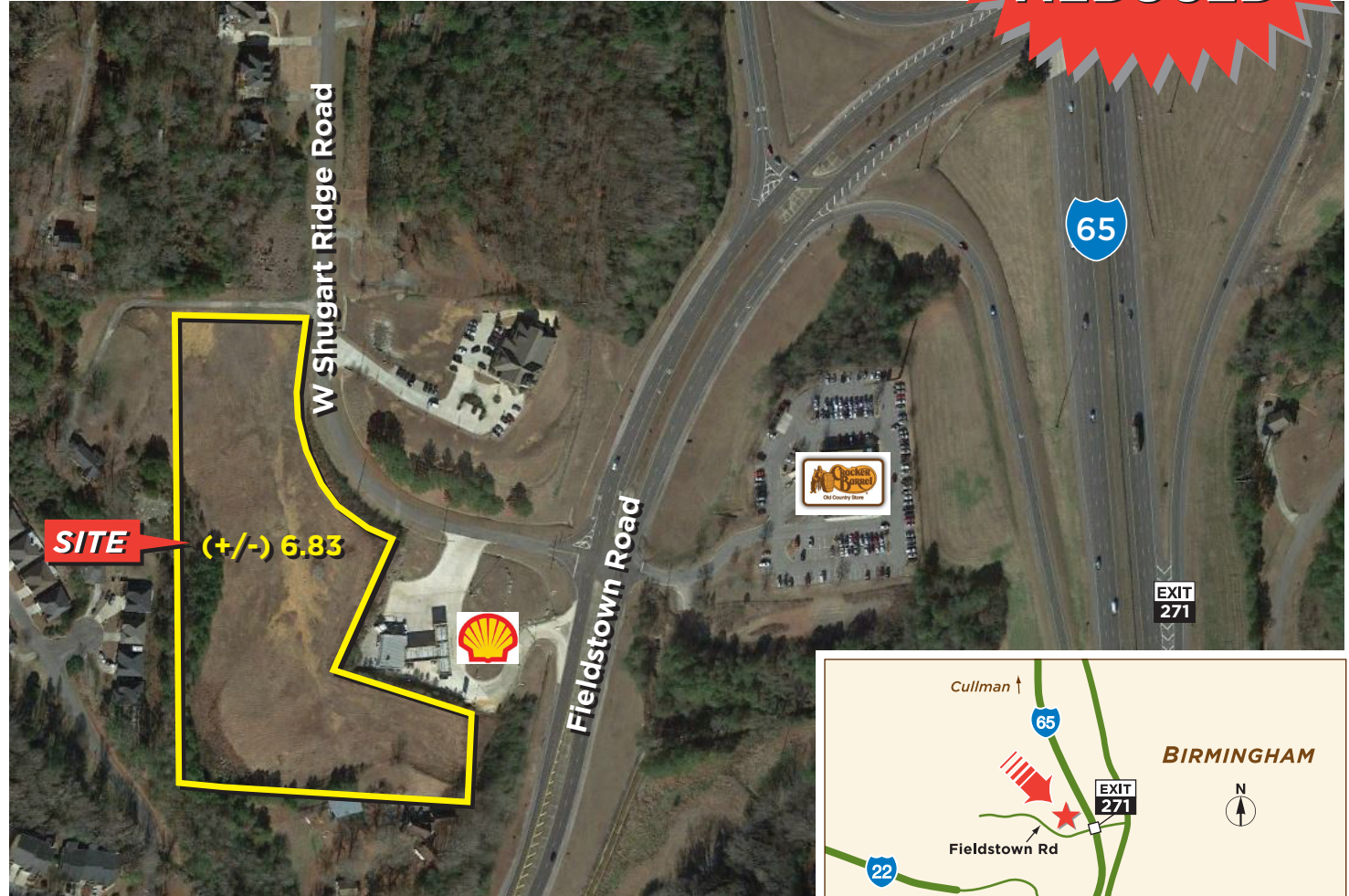
## PROPERTY INFORMATION

- ± 6.83 acres
- Can be subdivided
- Easily accessible
- C2 Zoning
- Great visibility
- All utilities
- High traffic count
- Excellent site for retail, office or service supply

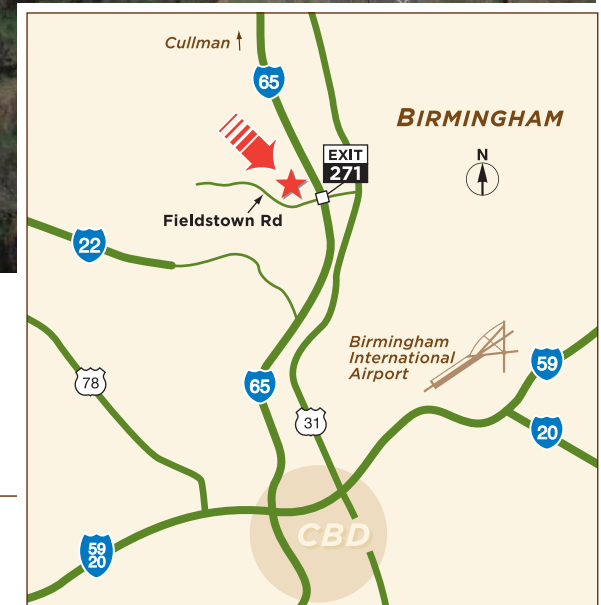
Information deemed reliable, but not guaranteed.

## EXCLUSIVE AGENT

John Coleman, SIOR  
205.871.7100  
johnc@grahamcompany.com



**SALE PRICE**  
~~\$1,785,000~~  
**\$1,295,000**



110 Office Park Drive  
Suite 200  
Birmingham, AL 35223

TEL 205.871.7100  
FAX 205.871.3331  
grahamcompany.com

8/19/15 Jo