

FOR SALE

FRANK SPICER CO. INC BUILDING

119 E. PRINCESS ANNE ROAD, NORFOLK, VA | 23510 |

PROPERTY HIGHLIGHTS

- Located on the corner of Monticello Avenue and Princess Anne Road
- Redevelopment opportunity for Multifamily, Retail, or Mixed Use facility
- Parking available
- 119 E. Princess Anne Road
 - ◆ 22,500 Sq. Ft.
 - ◆ 0.17 Acres
- G-1 Zoning
- Signalized Intersection
- Free of Easements

FOR SALE: \$750,000



Demographics (2017)

	1 Mile	3 Miles	5 Miles
Population	22,717	115,291	261,538
Households	10,667	43,343	99,611
Ave. HH Inc.	\$74,201	\$62,971	\$60,084

HARVEY LINDSAY
COMMERCIAL REAL ESTATE
A Tradition of Forward Thinking

999 Waterside Drive • Suite 1400
Norfolk, Virginia 23510
757-640-8700
www.HarveyLindsay.com

CONTACT:

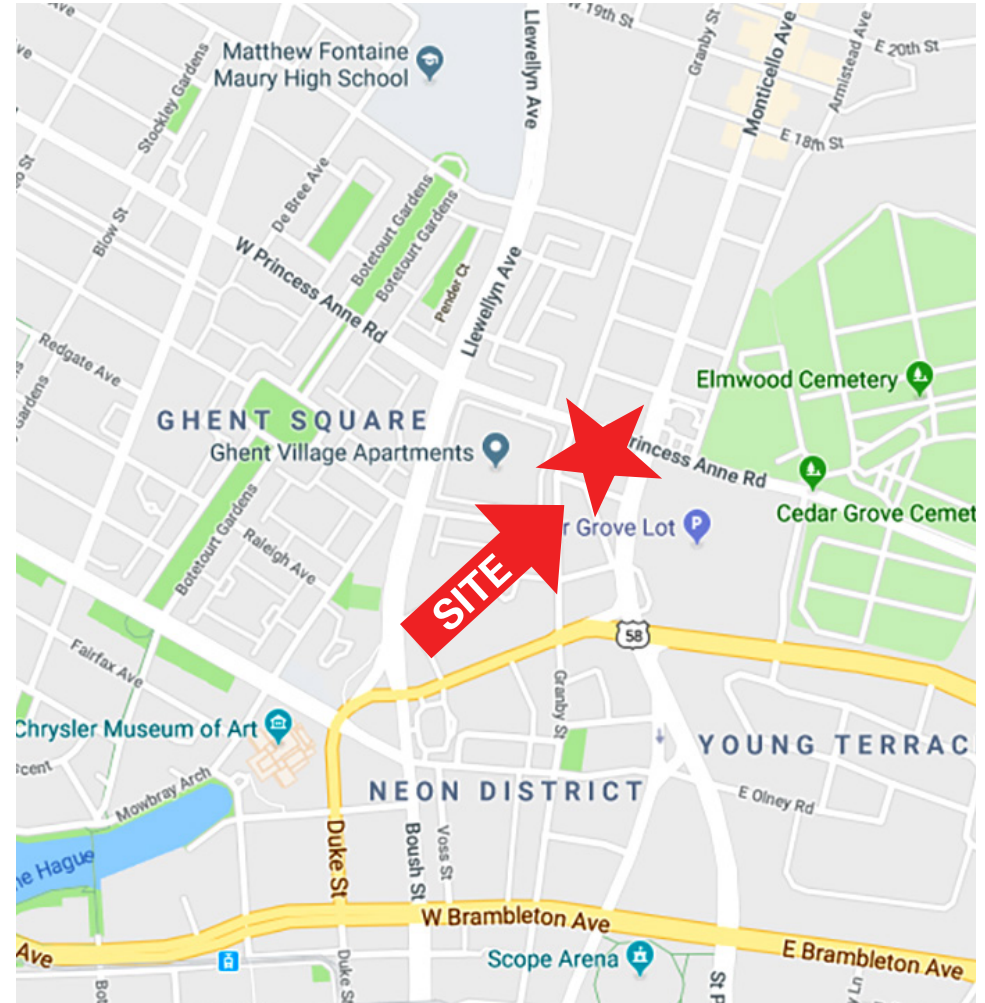
RYAN KING
(757) 640-8210
ryanking@harveylindsay.com

AL CARMICHAEL
(757) 640-8204
alcarmichael@harveylindsay.com

FOR SALE

FRANK SPICER CO. INC BUILDING

119 E. PRINCESS ANNE ROAD, NORFOLK, VA | 23510 |



HARVEY LINDSAY
COMMERCIAL REAL ESTATE

A Tradition of Forward Thinking

999 Waterside Drive • Suite 1400
Norfolk, Virginia 23510
757-640-8700
www.HarveyLindsay.com

CONTACT:

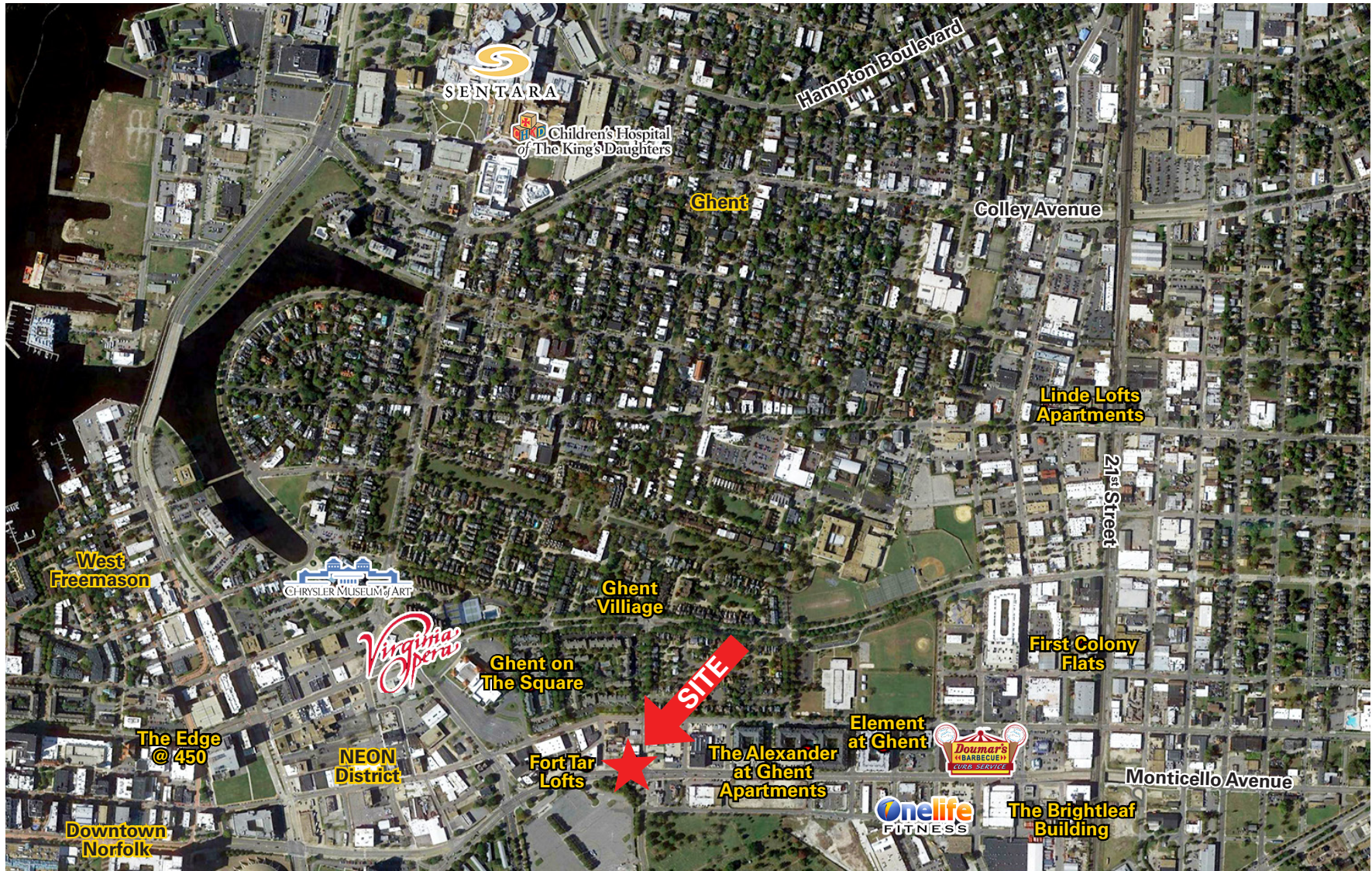
RYAN KING
(757) 640-8210
ryanking@harveylindsay.com

AL CARMICHAEL
(757) 640-8204
alcarmichael@harveylindsay.com

FOR SALE

FRANK SPICER CO. INC BUILDING

119 E. PRINCESS ANNE ROAD, NORFOLK, VA | 23510 |



HARVEY LINDSAY
COMMERCIAL REAL ESTATE

A Tradition of Forward Thinking

999 Waterside Drive • Suite 1400
Norfolk, Virginia 23510
757-640-8700
www.HarveyLindsay.com

CONTACT:

RYAN KING

(757) 640-8210

ryanking@harveylindsay.com

AL CARMICHAEL

(757) 640-8204

alcarmichael@harveylindsay.com