



# BAYSIDE TOWERS

4000 & 4100 East Third Avenue, Foster City



TISHMAN SPEYER

BOB GARNER



JON MACKEY



JOHN KRAFT



Newmark  
Knight Frank





## » table of contents

Project Highlights

01

Location

02

Transportation

03

Floorplans

04

Contact Agents

05

BAYSIDE  
TOWERS





**±49,407**

total square feet available



#### AVAILABLE SPACES

##### **BAYSIDE I - 4000 E THIRD AVENUE**

Fifth Floor: ±24,784 square feet

Sixth Floor: ±24,623 square feet



#### HIGHLIGHTS

- ⌘ Complimentary BART/Caltrain shuttles to project
- ⌘ Ride share partnership with Uber – Landlord incentive available
- ⌘ Sweeping bay views
- ⌘ Building top signage available
- ⌘ On-site Stockwell
- ⌘ Weekly food trucks and food delivery services
- ⌘ Convenient mid peninsula location and proximate to major freeway and San Mateo Bridge
- ⌘ 4/1000 parking
- ⌘ Two six-story Class A Office buildings



» project highlights



# 32 location

## CONVENIENT MID-PENINSULA LOCATION

31  
miles  
to San Jose

21  
miles  
to San  
Francisco

10  
miles  
to East Bay  
via San Mateo  
Bridge

10  
miles  
to San  
Francisco

29  
miles  
to San Jose

23  
miles  
to Oakland

## AIRPORT ACCESS

**BAYSIDE I**  
**4000**  
East Third  
Avenue  
.....  
**±137,478**  
Square Feet

**BAYSIDE II**  
**4100**  
East Third  
Avenue  
.....  
**±141,551**  
Square Feet





Preferred Bayside Towers and Uber for Business program with credit incentives available

shuttle service  
Foster City-Lincoln Centre Caltrain Shuttle

am

Northbound Caltrain No.	207	215	323	227
Arrives Hillsdale Station	6:51	7:28	8:16	8:51
Southbound Caltrain No.	206	314	218	228
Arrives Hillsdale Station	6:42	7:42	8:03	9:03

AM SHUTTLE

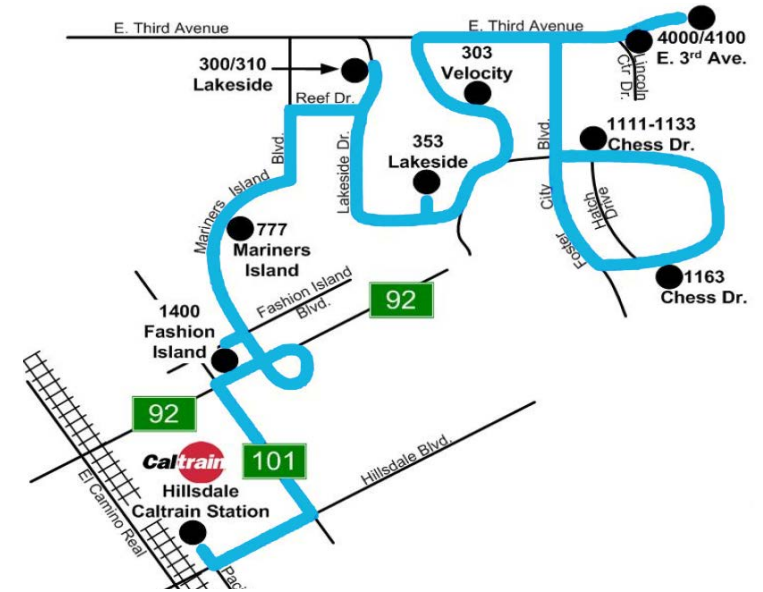
Departs Hillsdale Station	6:56	7:47	8:25	9:08
Bayside Towers	7:18	8:09	8:47	9:30

pm

PM SHUTTLE

Bayside Towers	3:26	4:14	4:52	5:32	6:10	6:48
Arrives Hillsdale Station	3:41	4:30	5:08	5:48	6:26	7:03

Northbound Caltrain No.	159	263	371	277	283	287
Departs Hillsdale Station	3:56	4:42	5:17	6:08	6:42	7:08
Southbound Caltrain No.	156	360	264	274	380	284
Departs Hillsdale Station	3:46	4:35	5:13	6:13	6:40	7:13



shuttle service  
Foster City-North BART/Caltrain Shuttle

am

Northbound Caltrain No.	305	309	319	329	231		
Arrives Millbrae Station	6:26	6:51	7:51	8:52	9:24		
Southbound Caltrain No.	206	310	314	320	324	330	134
Arrives Millbrae Station	6:22	6:52	7:16	7:52	8:16	8:52	9:25

AM SHUTTLE

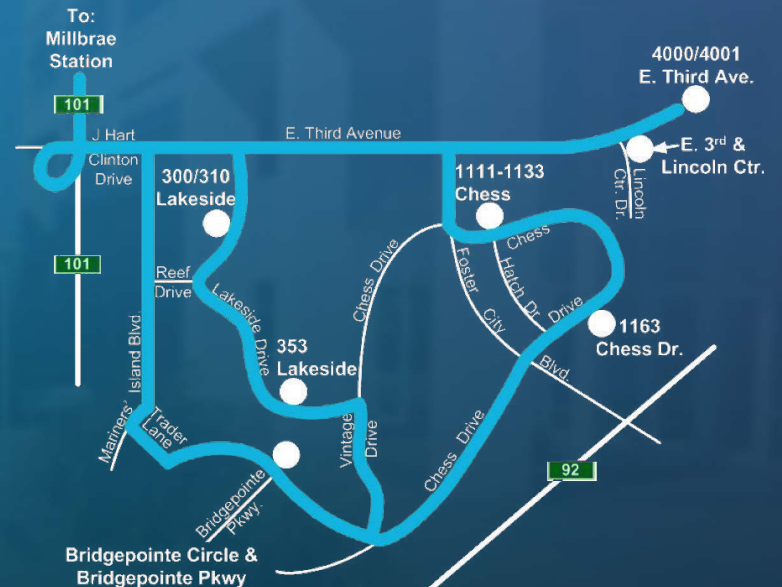
Departs Millbrae Station	6:35	7:00	7:30	8:00	8:30	9:00	9:32
Bayside Towers	7:04	7:29	7:59	8:29	8:59	9:29	10:01

pm

PM SHUTTLE

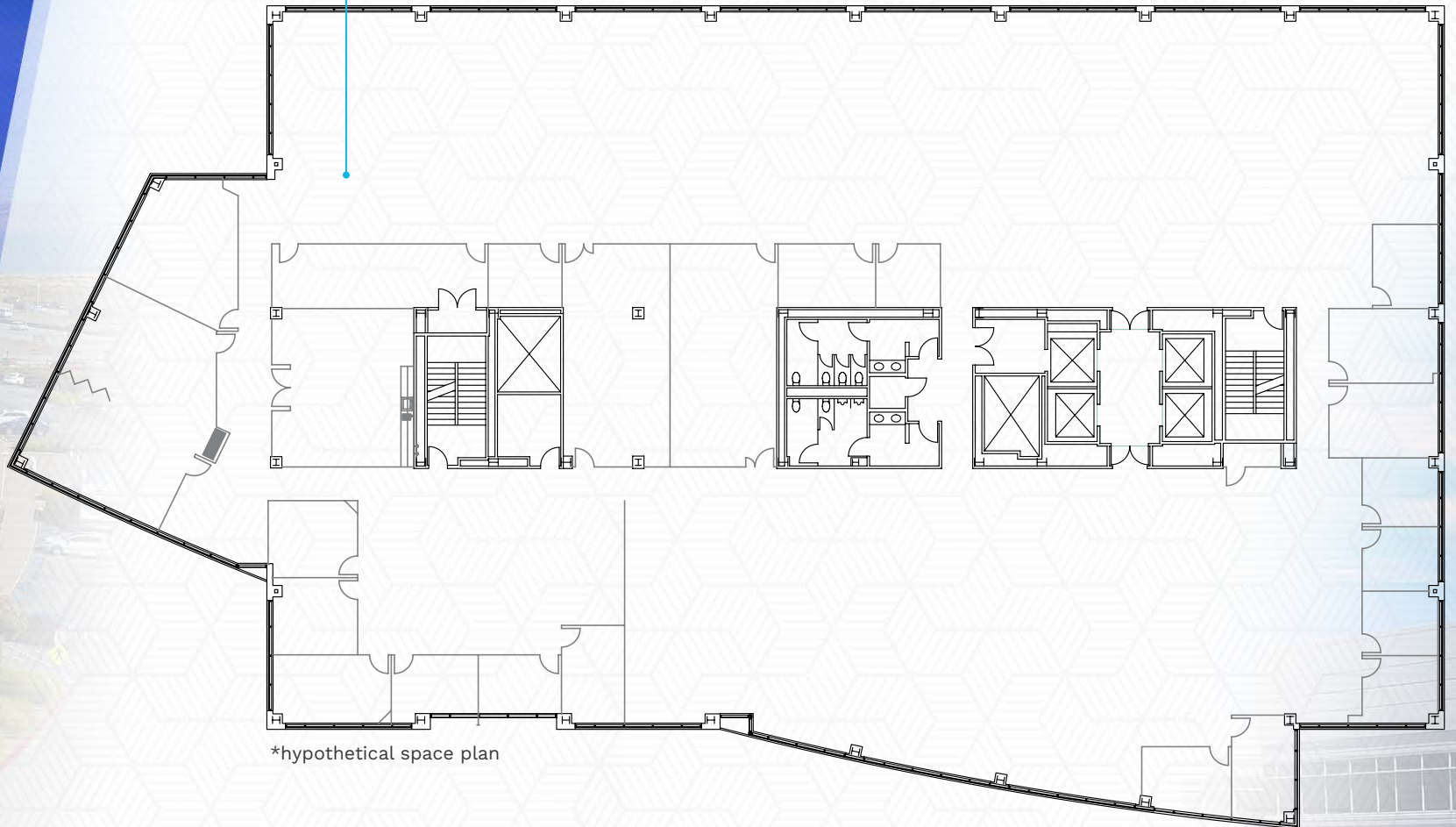
Bayside Towers	4:14	4:44	5:06	5:36	5:58	6:28	6:50
Arrives Millbrae Station	4:33	5:03	5:25	5:55	6:17	6:47	7:09

Northbound Caltrain No.	261	365	371	375	381	385	
Departs Millbrae Station	4:42	5:10	5:30	6:06	6:30	7:06	
Southbound Caltrain No.	366	268	370	278	380	386	288
Departs Millbrae Station	4:53	5:15	5:33	6:15	6:33	6:53	7:15



±24,784 SF

**fifth floor**  
4000 EAST THIRD AVENUE



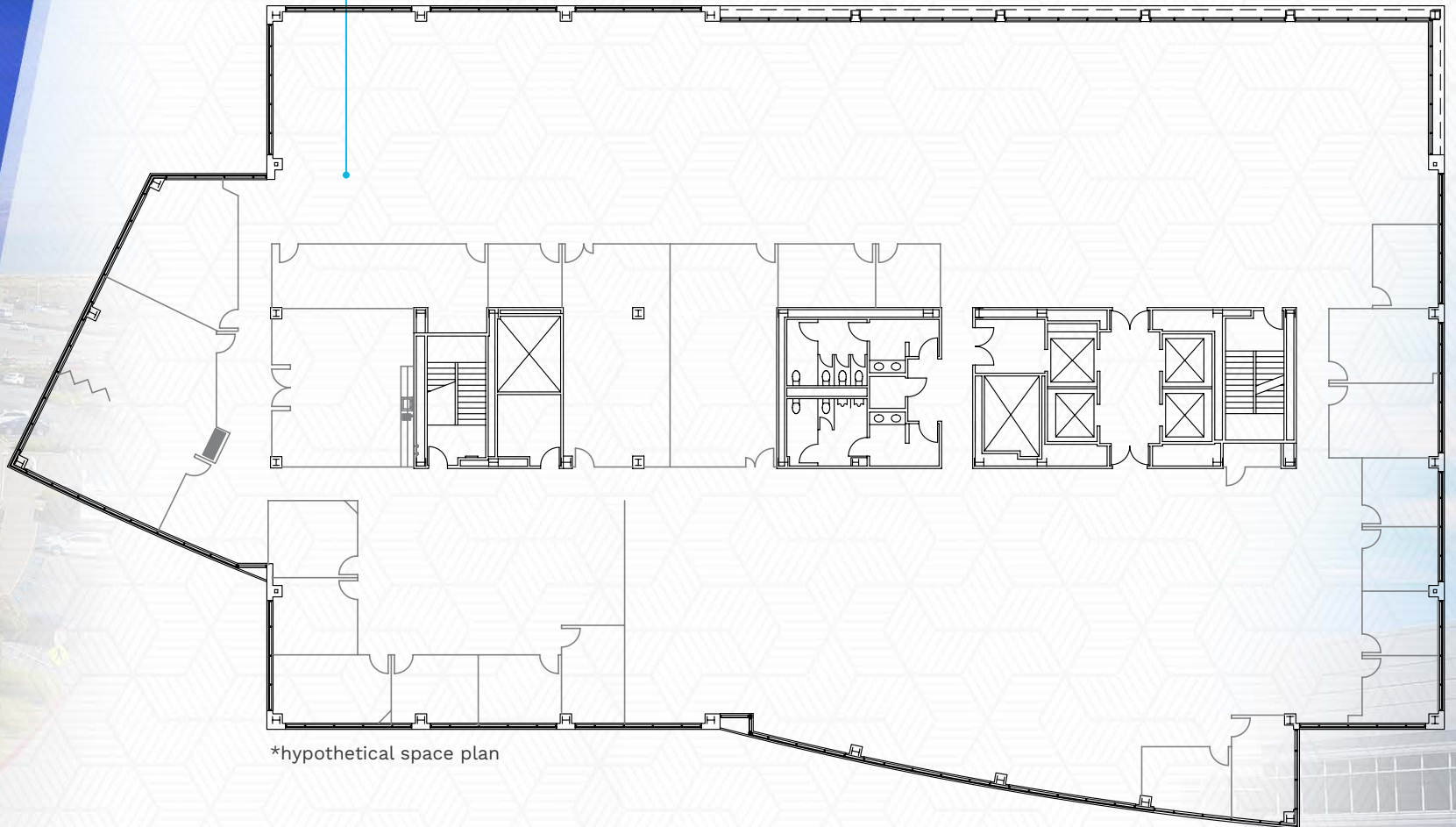
\*hypothetical space plan

BAYSIDE I



±24,623 SF

sixth floor  
4000 EAST THIRD AVENUE



\*hypothetical space plan

BAYSIDE I





»» **Bob Garner**  
Executive Managing Director  
bgarner@ngkf.com  
650.358.5266  
CA RE License #00936790

»» **Jon Mackey**  
Senior Managing Director  
jmackey@ngkf.com  
408.987.4129  
CA RE License #01362376

»» **John Kraft**  
Managing Director  
jkraft@ngkf.com  
650.358.5277  
CA RE License #01787698

2950 South Delaware Street, Suite 125, San Mateo | 09-1935.06/19

The distributor of this communication is performing acts for which a real estate license is required. The information contained herein has been obtained from sources deemed reliable but has not been verified and no guarantee, warranty or representation, either express or implied, is made with respect to such information. Terms of sale or lease and availability are subject to change or withdrawal without notice.



TISHMAN SPEYER



**Newmark  
Knight Frank**