

# FOR LEASE

818 E. Main St. Spartanburg, SC 29302

**NAI** Earle Furman

**\$16.00 SF/YR (NNN)**



## Office | 1,800 - 3,600 SF

- 7,200 SF building
- 1,800 SF upper level available Suite A
- 3,600 SF lower level can be upfitted
- Excellent location on East Main Street
- Parking in front and rear of building
- Marquee signage available
- 22,800 VPD 2018
- ADA accessible ramp
- Total population: 85,839
- Total households: 32,759



**Katherine Fulmer**

O: +1 864 720 1663

C: +1 864 415 5931

kfulmer@naiearlefurman.com

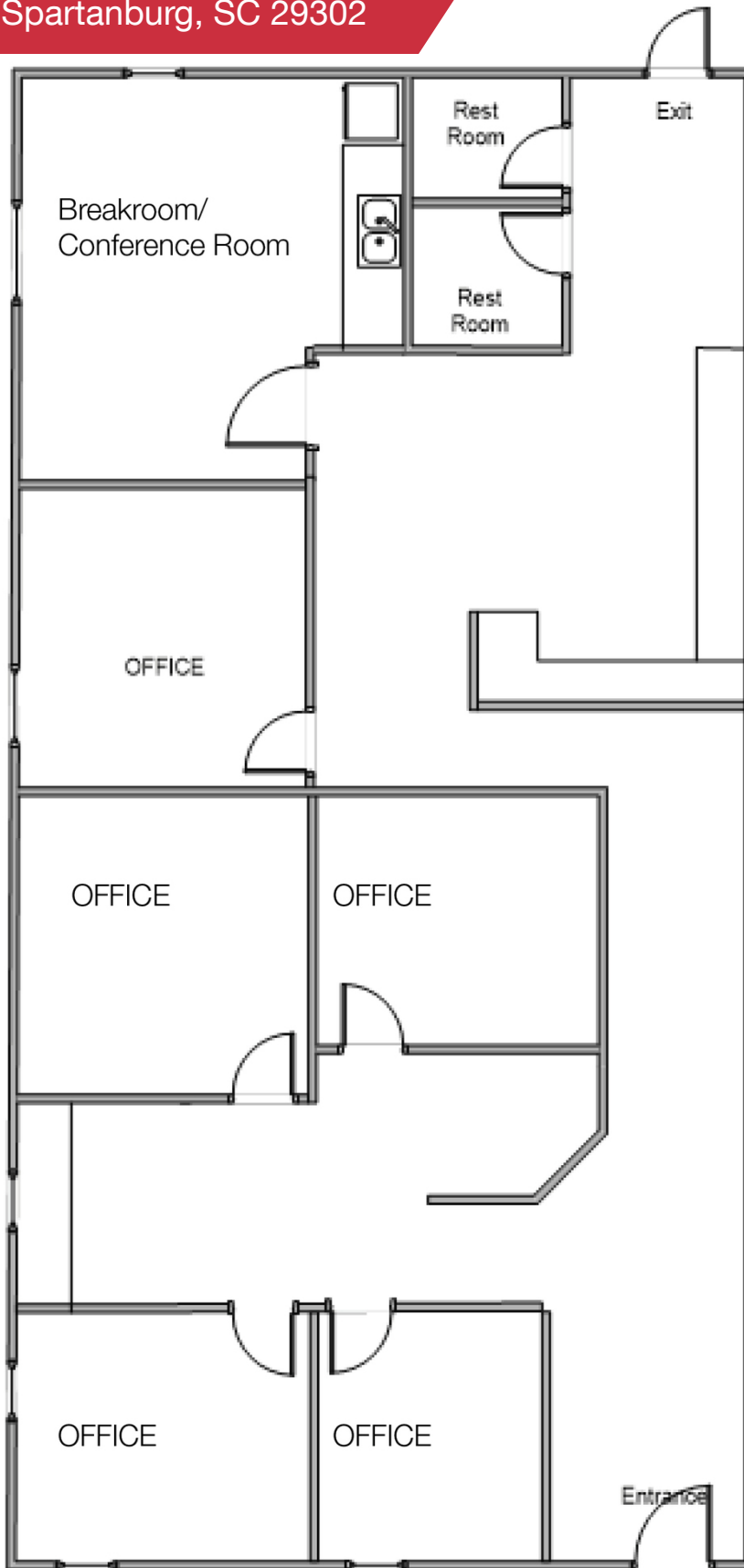
No Warranty Or Representation, Express Or Implied, Is Made As To The Accuracy Of The Information Contained Herein, And The Same Is Submitted Subject To Errors, Omissions, Change Of Price, Rental Or Other Conditions, Prior Sale, Lease Or Financing, Or Withdrawal Without Notice, And Of Any Special Listing Conditions Imposed By Our Principals. No Warranties Or Representations Are Made As To The Condition Of The Property Or Any Hazards Contained Therein Are Any To Be Implied.



**314 S Pine St.**  
Spartanburg, SC 29302  
naief.com

# FOR LEASE

818 E. Main St. Spartanburg, SC 29302



Suite A

✉ **Katherine Fulmer**  
O: +1 864 720 1663  
C: +1 864 415 5931  
kfulmer@naiearlefurman.com

No Warranty Or Representation, Express Or Implied, Is Made As To The Accuracy Of The Information Contained Herein, And The Same Is Submitted Subject To Errors, Omissions, Change Of Price, Rental Or Other Conditions, Prior Sale, Lease Or Financing, Or Withdrawal Without Notice, And Of Any Special Listing Conditions Imposed By Our Principals. No Warranties Or Representations Are Made As To The Condition Of The Property Or Any Hazards Contained Therein Are Any To Be Implied.

