

AVAILABLE FOR SALE

1880 Circuit Dr., Round Lake Beach, IL.

14,000 SF



PROPERTY FEATURES

- Freestanding 14,000 SF Industrial Facility in Lake County
- Recently Renovated Office
- 20' Clear Height
- Rare Clear Span Warehouse
- Heavy Parking
- Oversized Drive-in-doors

Contact:

Dan Jones, SIOR
Managing Broker
847-310-4299

djones@entreccommercial.com

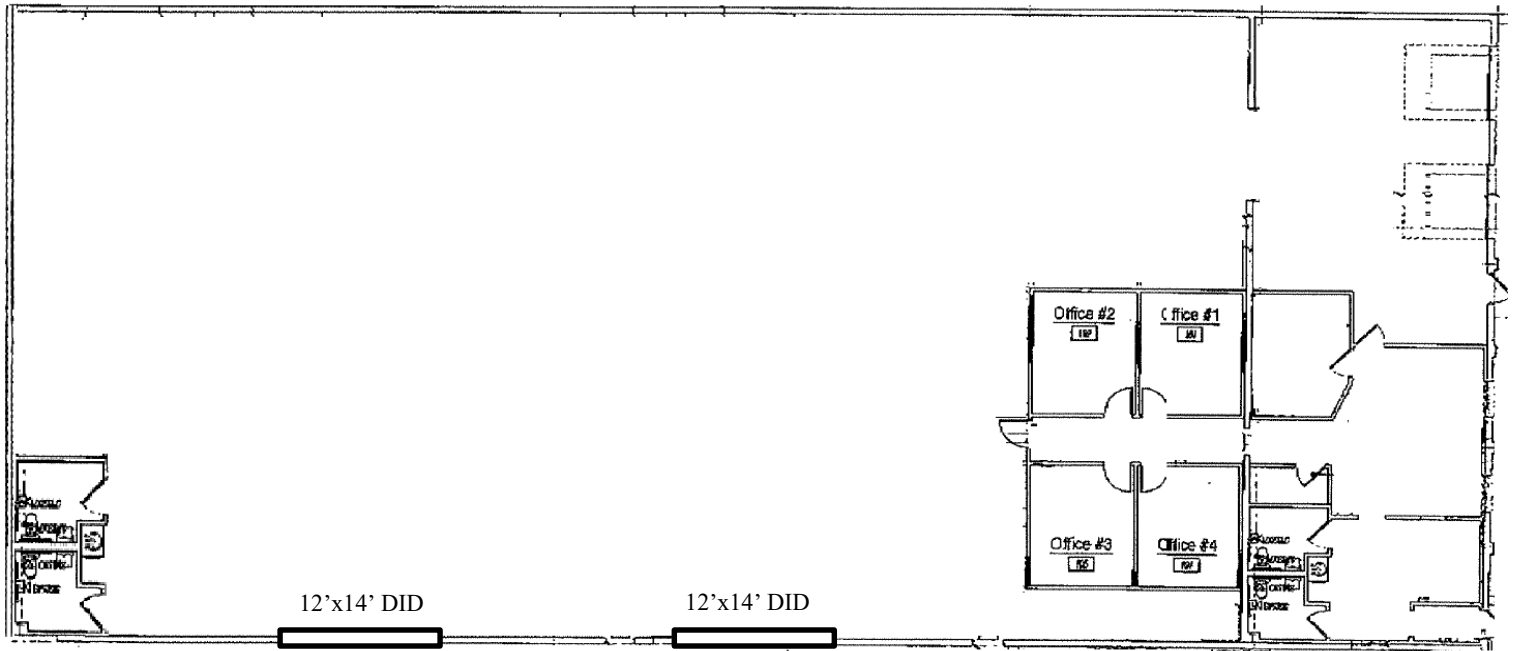
Cory Kay
224-532-2497

ckay@entreccommercial.com

AVAILABLE FOR SALE

1880 Circuit Dr., Round Lake Beach, IL.

14,000 SF



PROPERTY SPECIFICATIONS:

- Building Size: 14,000 SF
- Land: .91 Acres
- Office: ~1,700 SF
- Zoning: I-2
- Age: 1993
- Power: 400A/208V 3 Phase
- Clear Height: 20'
- Loading: 2 Truck Docks
2 DID (12'x14')
- Parking: 1.29 per 1000
- Sprinklers: Wet
- Real Estate Taxes: \$1.85 PSF (2016)
- Sale Price: \$590,000 (\$42 PSF)

Contact:

Dan Jones, SIOR
Managing Broker
847-310-4299

djones@entrecmercial.com

Cory Kay
224-532-2497

ckay@entrecmercial.com