

650 E Carmel Dr

Carmel, IN 46032



Office

1,600 SF

[VIEW WEBSITE](#)

PROPERTY HIGHLIGHTS

- Last remaining suite
- Located in the heart of Carmel with many area amenities
- On-sight management
- Bank on first floor of building
- Many new capitol improvements, HVAC, Lighting, elevators in the last 3 years



DEMOGRAPHICS	1 MILE	3 MILES	5 MILES
Total Households	3,474	22,931	56,416
Total Population	8,364	57,222	138,528
Average HH Income	\$82,470	\$100,708	\$102,893

Ashley Bussell
Director
Ashley@alopg.com
C: 317.340.8630

ALO Property Group
9075 N. Meridian St., Ste. 175
Indianapolis, IN 46260
O: 317.853.7500
www.alopg.com



650 E Carmel Dr

Carmel, IN 46032

[Additional Photos](#)



Ashley Bussell
Director
Ashley@alogp.com
C: 317.340.8630

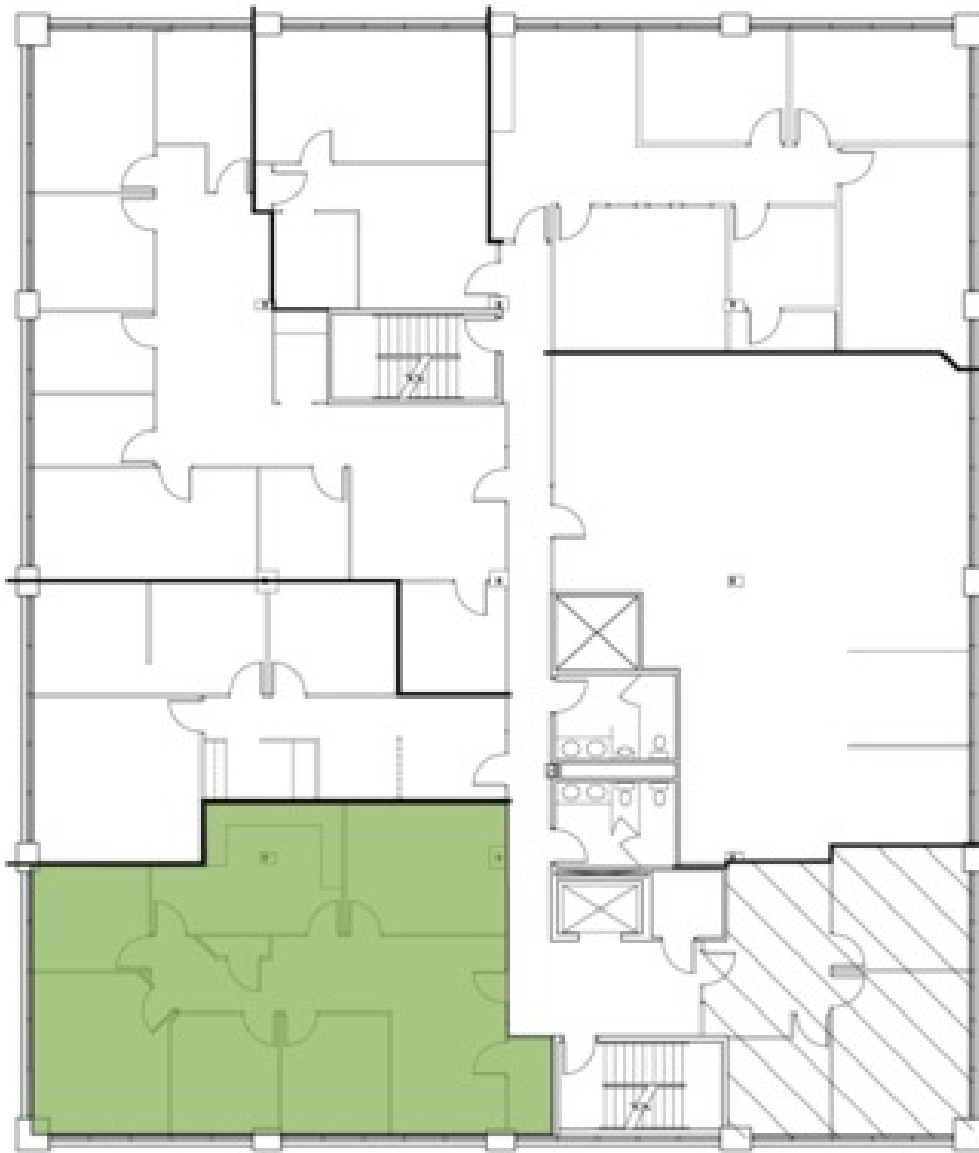
ALO Property Group
9075 N. Meridian St., Ste. 175
Indianapolis, IN 46260
O: 317.853.7500
www.alogp.com



650 E Carmel Dr

Carmel, IN 46032

Site Plan



Ashley Bussell
Director
Ashley@alopg.com
C: 317.340.8630

ALO Property Group
9075 N. Meridian St., Ste. 175
Indianapolis, IN 46260
O: 317.853.7500
www.alopg.com

