

FOR LEASE: ±17,864 SF

MS VAN BUREN I BUSINESS PARK

DEVELOPED BY: SILAGI DEVELOPMENT
& MANAGEMENT, INC. // 1.805.402.4515

SDM



BUILDING 1 | 22380 VAN BUREN BLVD, RIVERSIDE, CA

PROPERTY HIGHLIGHTS

- ±47,615 SF Total Building
- ±17,864 SF Available
- ±1,500 SF of Office
- 26' Clear Height
- 3 Dock High Doors (9'x10')
- 1 Ground Level Door (12'x14')
- 400 Amp, 277/480 Volts, 3 Phase
- ESFR Sprinklers
- (MU) Mixed-Use Zoning
- Secured Concrete Truck Court
- Excellent Access to the I-215/60 Freeways



Please Contact:

WWW.SILAGISOCAL.COM

**LEE &
ASSOCIATES**
COMMERCIAL REAL ESTATE SERVICES

R. MARIO CALVILLO
DRE#: 01911573 // 951.276.3657
MCALVILLO@LEERIVERSIDE.COM

GARRY JENKINS
DRE#: 02008115 // 951.276.3621
GJENKINS@LEERIVERSIDE.COM

No warranty or representation has been made to the accuracy of the foregoing information. Terms of sale or lease and availability are subject to change or withdrawal without notice. Lee & Associates Commercial Real Estate Services, Inc. - Riverside. 3240 Mission Inn Avenue, Riverside, CA 92507 | Corporate DRE#: 01048055

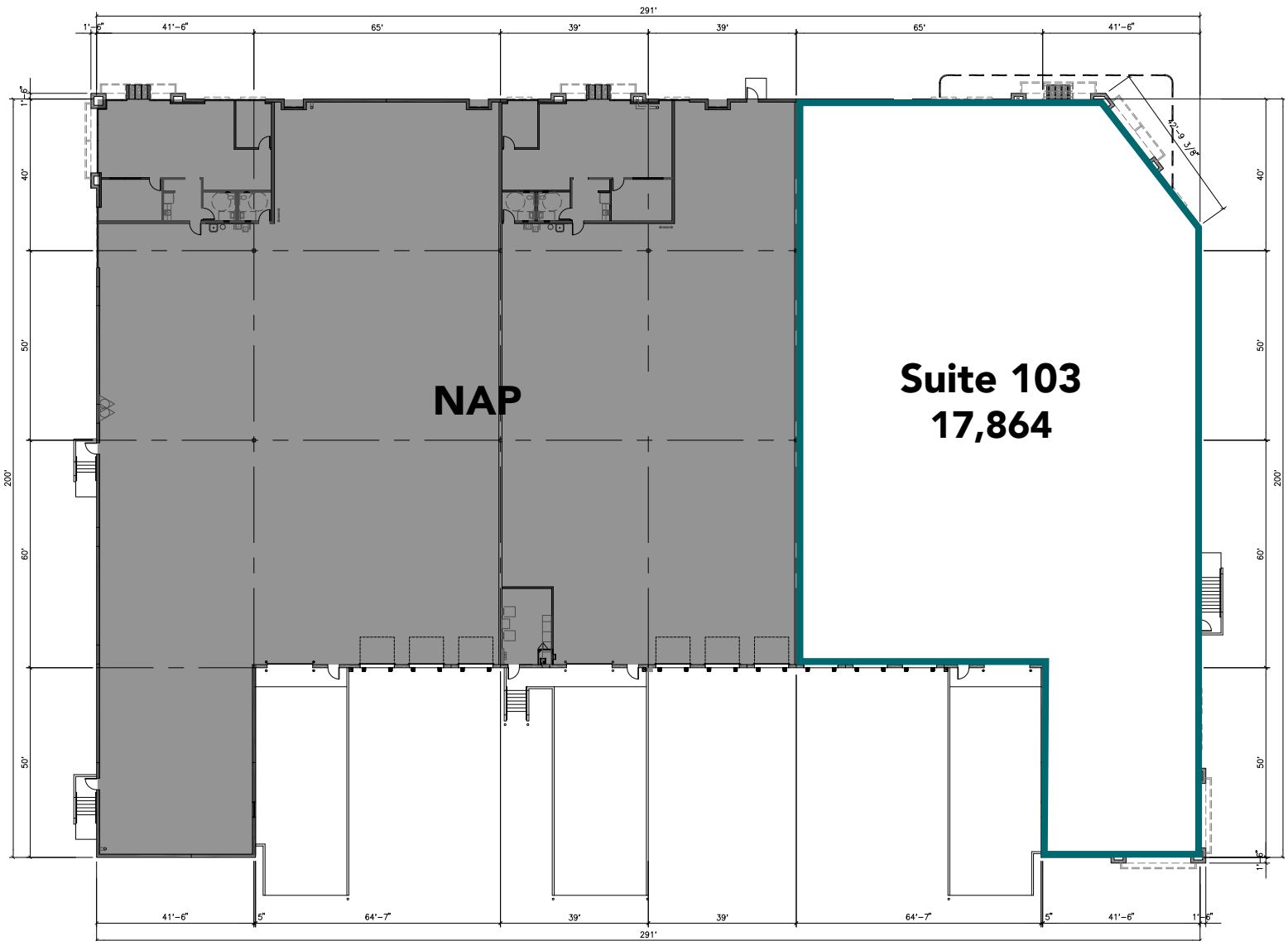
FOR LEASE: ±17,864 SF

MS VAN BUREN I BUSINESS PARK

DEVELOPED BY: SILAGI DEVELOPMENT
& MANAGEMENT, INC. // 1.805.402.4515



SITE PLAN



Please Contact:

WWW.SILAGISOCAL.COM



R. MARIO CALVILLO
DRE#: 01911573 // 951.276.3657
MCALVILLO@LEERIVERSIDE.COM

GARRY JENKINS
DRE#: 02008115 // 951.276.3621
GJENKINS@LEERIVERSIDE.COM

No warranty or representation has been made to the accuracy of the foregoing information. Terms of sale or lease and availability are subject to change or withdrawal without notice. Lee & Associates Commercial Real Estate Services, Inc. - Riverside. 3240 Mission Inn Avenue, Riverside, CA 92507 | Corporate DRE#: 01048055

FOR LEASE: ±17,864 SF

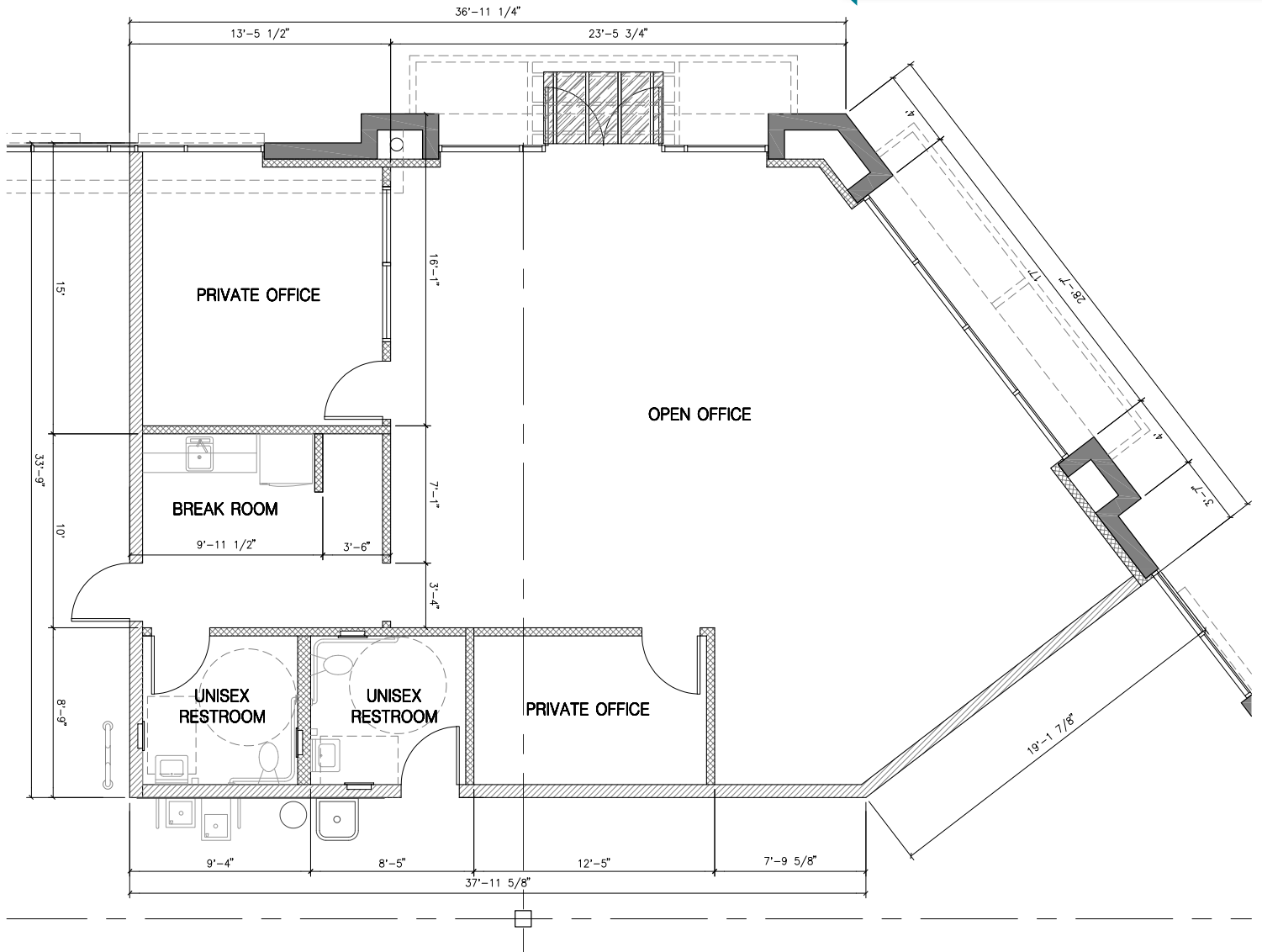
MS VAN BUREN I

BUSINESS PARK

DEVELOPED BY: SILAGI DEVELOPMENT & MANAGEMENT, INC. // 1.805.402.4515



OFFICE FLOOR PLAN



ENLARGED FLOOR PLAN (B)
scale: 1/4" = 1'-0"

Please Contact:

WWW.SILAGISOCAL.COM



R. MARIO CALVILLO
DRE#: 01911573 // 951.276.3657
MCALVILLO@LEERIVERSIDE.COM

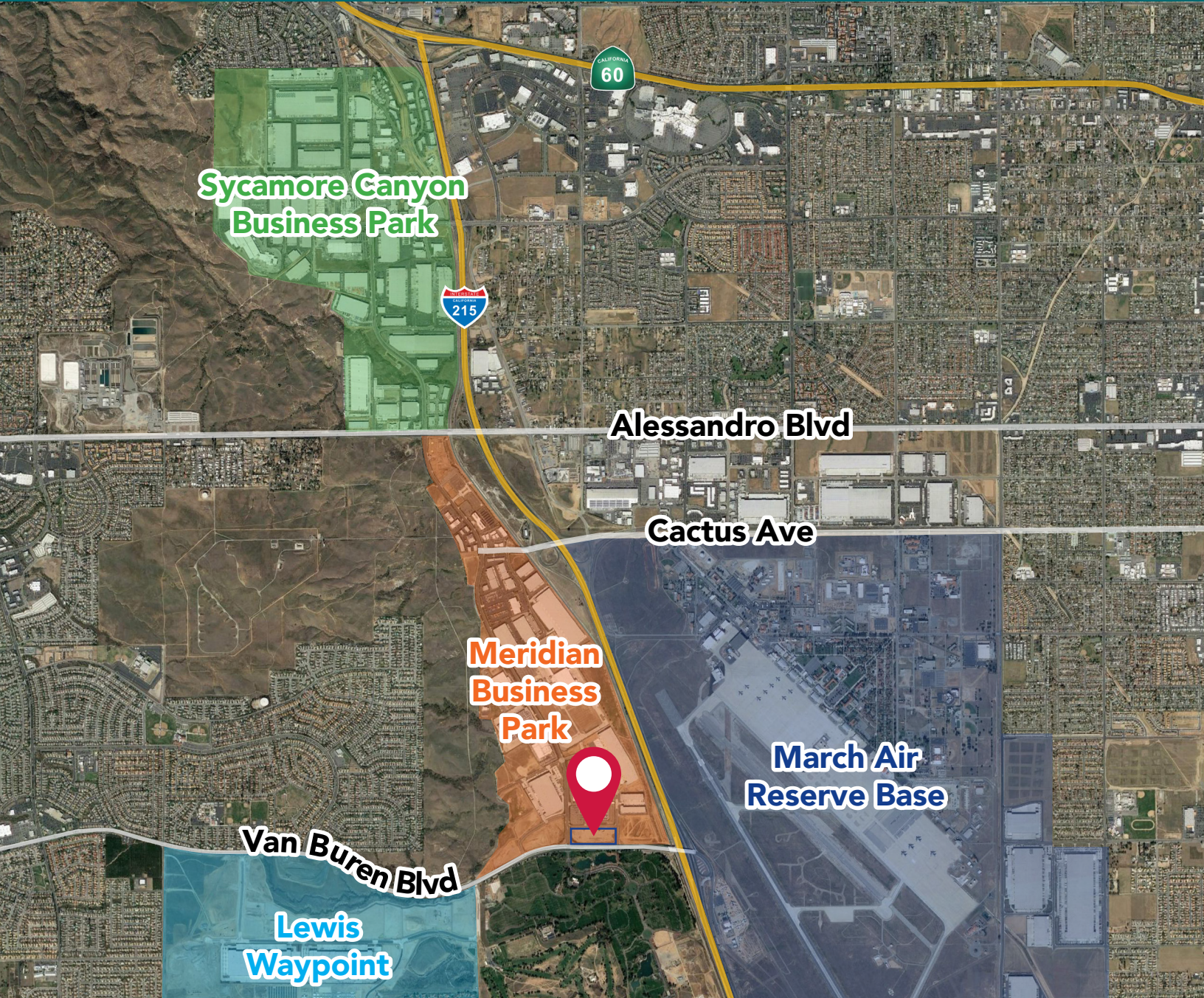
GARRY JENKINS
DRE#: 02008115 // 951.276.3621
GJENKINS@LEERIVERSIDE.COM

No warranty or representation has been made to the accuracy of the foregoing information. Terms of sale or lease and availability are subject to change or withdrawal without notice. Lee & Associates Commercial Real Estate Services, Inc. - Riverside. 3240 Mission Inn Avenue, Riverside, CA 92507 | Corporate DRE#: 01048055

FOR LEASE: ±17,864 SF

MS VAN BUREN I BUSINESS PARK

DEVELOPED BY: SILAGI DEVELOPMENT
& MANAGEMENT, INC. // 1.805.402.4515



Please Contact:

WWW.SILAGISOCAL.COM



R. MARIO CALVILLO
DRE#: 01911573 // 951.276.3657
MCALVILLO@LEERIVERSIDE.COM

GARRY JENKINS
DRE#: 02008115 // 951.276.3621
GJENKINS@LEERIVERSIDE.COM

No warranty or representation has been made to the accuracy of the foregoing information. Terms of sale or lease and availability are subject to change or withdrawal without notice. Lee & Associates Commercial Real Estate Services, Inc. - Riverside. 3240 Mission Inn Avenue, Riverside, CA 92507 | Corporate DRE#: 01048055