

684 EAST VINE STREET
MURRAY, UTAH



COMMERCE
REAL ESTATE SOLUTIONS • COMRE.COM
INDEPENDENTLY OWNED AND OPERATED

FOR LEASE

2ND FLOOR - INDIVIDUAL OFFICE

VINE STREET OFFICE CONDOS



PROPERTY FEATURES

- 2nd Floor - Individual Office
 - 230 RSF - Single Office - \$350 per month
 - 145 RSF - Single Office - \$220 per month
 - 132 RSF - Single Office - \$200 per month
- Ready April 2014
- New Paint & Carpets Cleaned
- This building is hooked up to Utopia fiber providers



For more information, please contact:

T. ORDEN YOST, CCIM

Office & Medical Development / Investment

(801) 303 5427

tyost@comre.com

CUSHMAN & WAKEFIELD | COMMERCE

170 South Main Street, Suite 1600

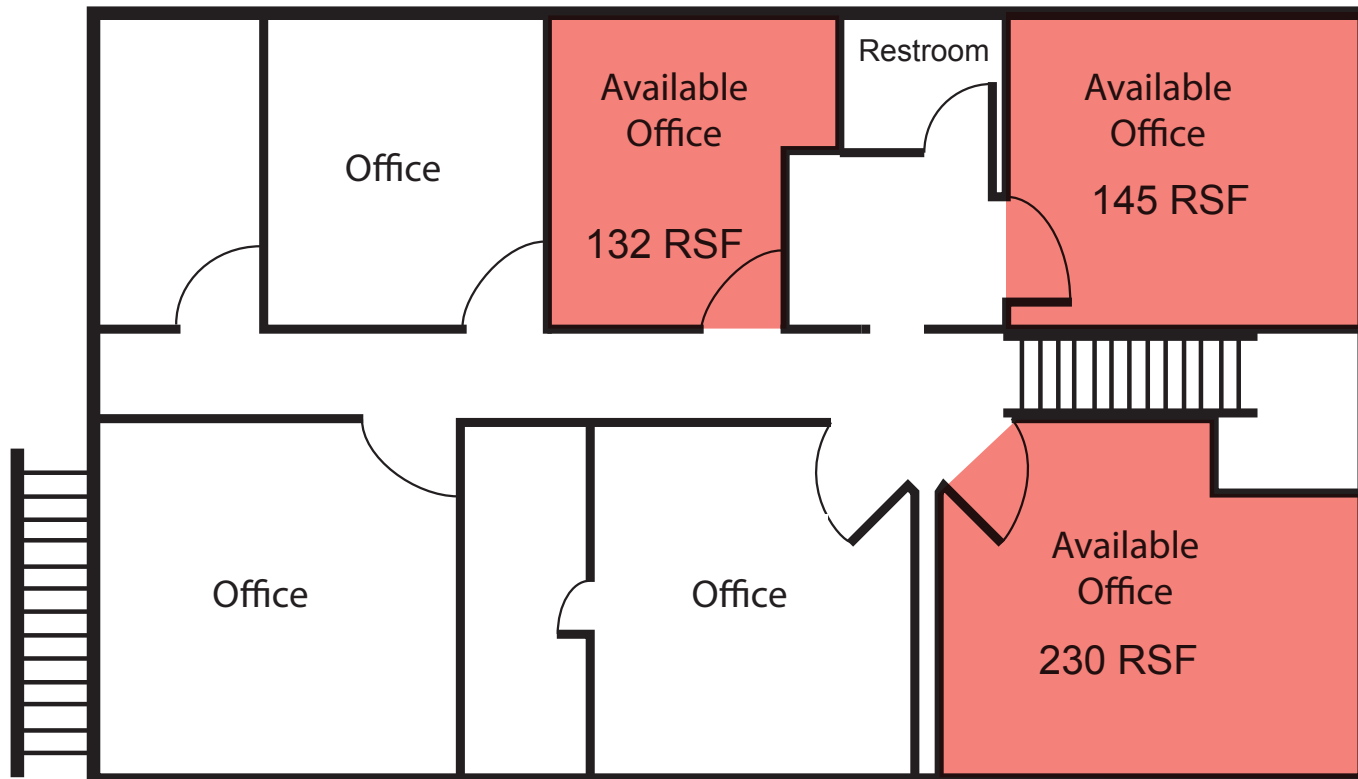
Salt Lake City, Utah 84101

(801) 322 2000

www.comre.com

©2014, Commerce Real Estate Solutions. Disclaimer: The above information is given with the obligation that all negotiations relating to the purchase, renting, or leasing of the property described above shall be conducted through Commerce Real Estate Solutions. No warranty or representation, express or implied, is made as to the accuracy of the information contained herein, and same is submitted subject to errors, omissions, change of price, rental or other encumbrances, withdrawal without notice, and to any special listing conditions imposed by the seller. Prospective buyers should conduct their own due diligence. Some aerial photography by DigitalGlobe or Aerials Express.
path: G:\1 - Projects\Yost, OI - Flyers\684 East Vine Street

SECOND FLOOR



For more information, please contact:

T. ORDEN YOST, CCIM

Office & Medical Development / Investment

(801) 303 5427

tyost@comre.com

CUSHMAN & WAKEFIELD | COMMERCE

170 South Main Street, Suite 1600

Salt Lake City, Utah 84101

(801) 322 2000

www.comre.com