

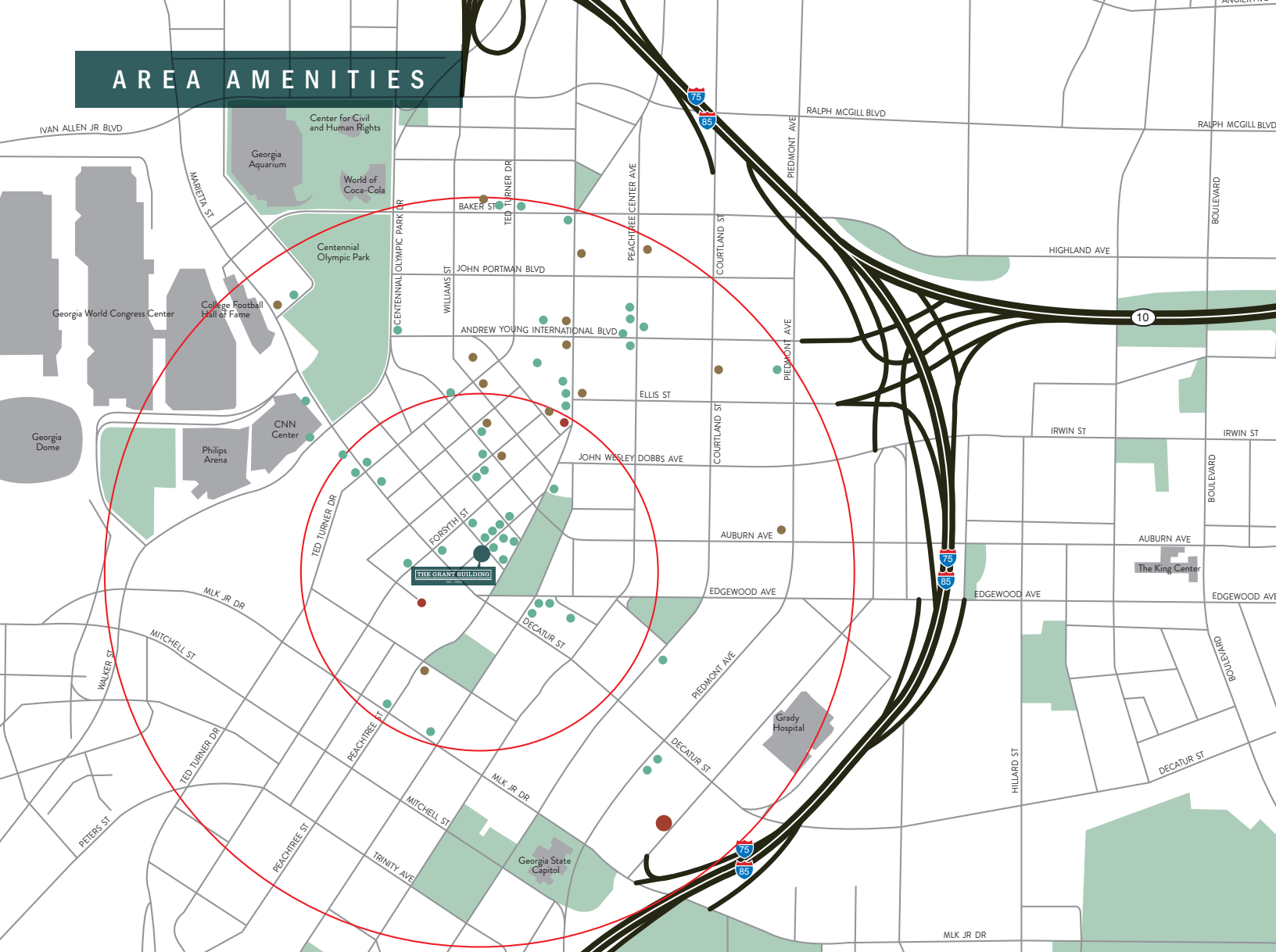


# THE GRANT BUILDING

EST. 1898



# AREA AMENITIES



● Food ● Hotels ● Transportation

## RESTAURANT WITHIN 1/4 MILE

- Naanstop
- The Taqueria on Broad
- Reuben's Deli
- Rosa's Pizza
- East Wave Asian Fusion
- Magnolia Bistro
- The Landmark Diner
- Quiznos
- Saxby's Coffee

## RESTAURANT WITHIN 1/2 MILE

- Ray's in the City
- Tin Lizzy's
- Park Bar
- Ted's Montana Grill
- White Oak Kitchen & Cocktails
- Juke Joint
- Pitty Pat's Porch
- Meehan's Public House

- Hudson Grille
- Atlanta Braves All-Star Grille
- Cuts Steakhosue

## HOTELS

- Westin Peachtree
- Sheraton Atlanta
- Hilton Atlanta
- Atlanta Marriott Marquis
- Fairfield Inn & Suites
- Glenn Hotel
- Omni Hotel
- Aloft Atlanta Downtown
- Doubletree by Hilton
- The Ellis Hotel
- Ritz Carlton
- Holiday Inn Express
- Hampton Inn
- Hotel Indigo

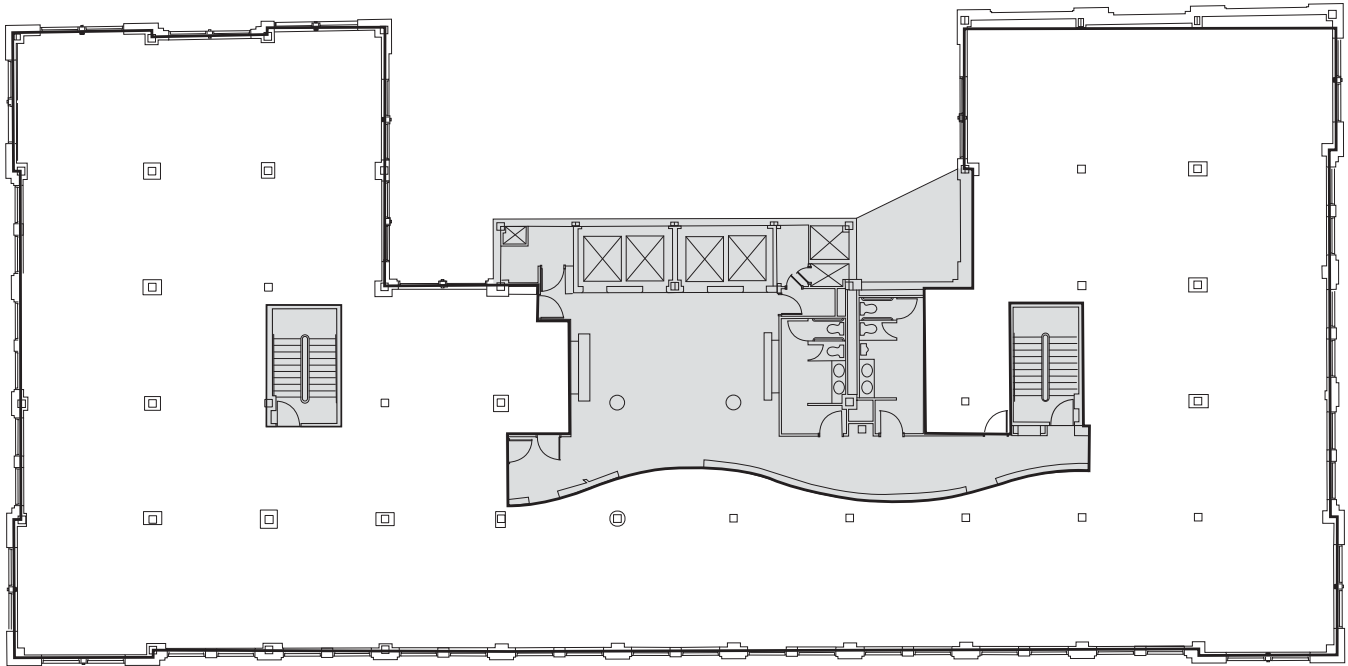
## TRANSPORTATION

- Five Points MARTA Station
- Peachtree Center MARTA Station
- Georgia State MARTA Station
- Downtown Streetcar
- I-75 & I-85



- One of Atlanta's original Skyscrapers, dating to 1898
- Classic Architecture, featured in the National Register of Historic Places with original marble clad lobbies and common areas
- Located at the heart of the Fairlie-Poplar district at the intersection of Broad St. and Walton St.
- Directly connected to Atlanta's Entertainment district featuring Mercedes Benz Stadium, Phillips Arena, The Tabernacle, Centennial Olympic Park, World of Coke, Center for Civil and Human Rights, College Football Hall of Fame and the Georgia Aquarium
- 2 Blocks from either Peachtree Center MARTA station or Five Points Station
- Building renovations underway
- Full Floor and Spec Suites Available ranging from 500-13,000 SF
- Maximum contiguous block – 52,000SF at the top of the building

## FLOOR PLAN



For leasing information, contact:



**David Horne**  
+1 404 995 6321  
david.horne@am.jll.com

**THE GRANT BUILDING**

EST. 1898