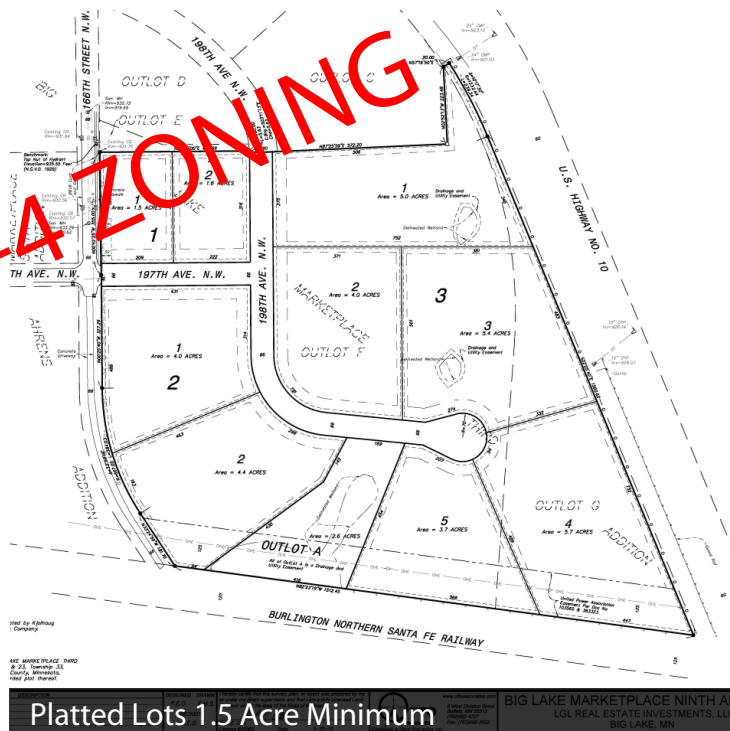
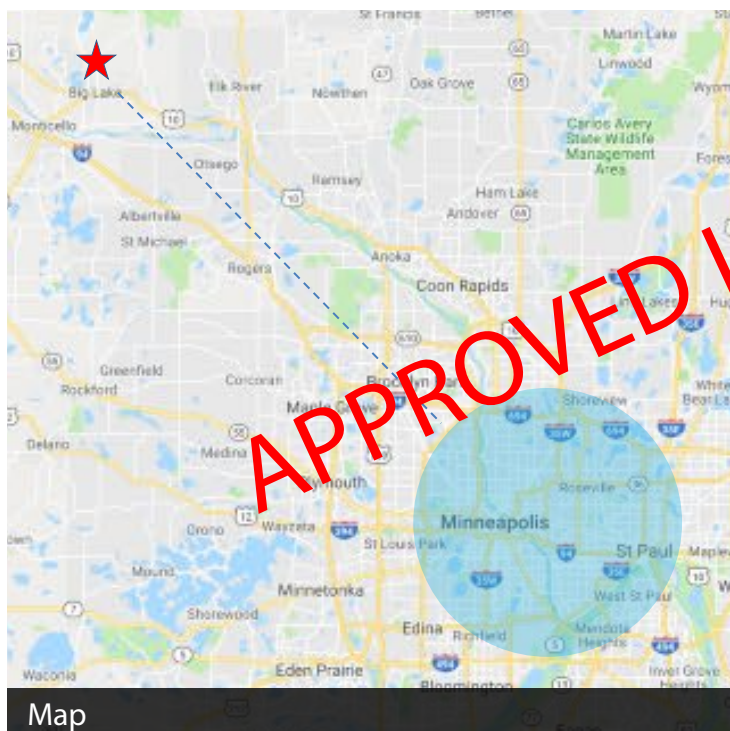


## Big Lake – Land with Outside Storage

### Zoned for Steel Structures – with Outside Storage



### OFFERING SUMMARY

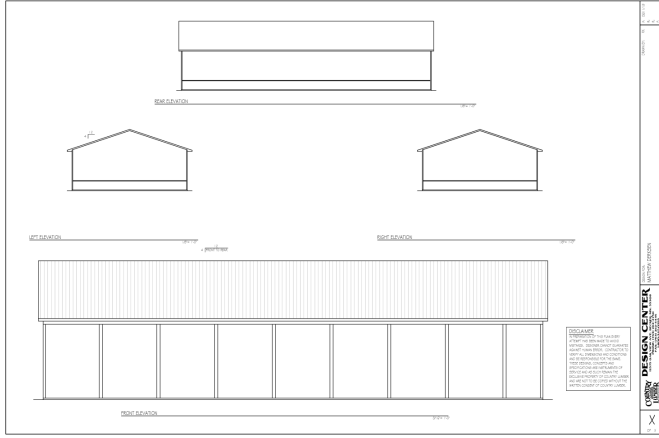
Sale Price:	\$2.40-2.85/SF
Lot Size:	1.5-41 Acres
Outside Storage:	3.5/1 Ratio
Fiber:	Located at Site
Utilities:	Located at Site
Steel Structures:	Allowed
Regional Pond:	Reduced ponding requirement.

### PROPERTY OVERVIEW

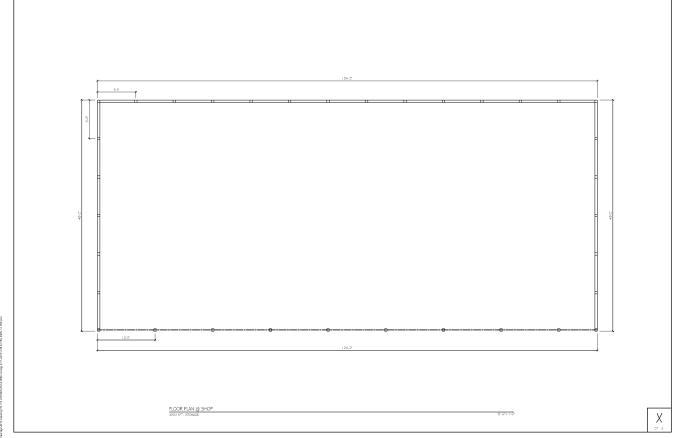
- Fully Platted
- 30 minutes to MPLS/St. Paul
- Able to break ground 2019
- Quick city approval
- Within minutes of the Northstar commuter line
- Close to restaurants
- Steel buildings allowed
- I-4 Zoned
- Rail spur. possible

# Sample Elevations

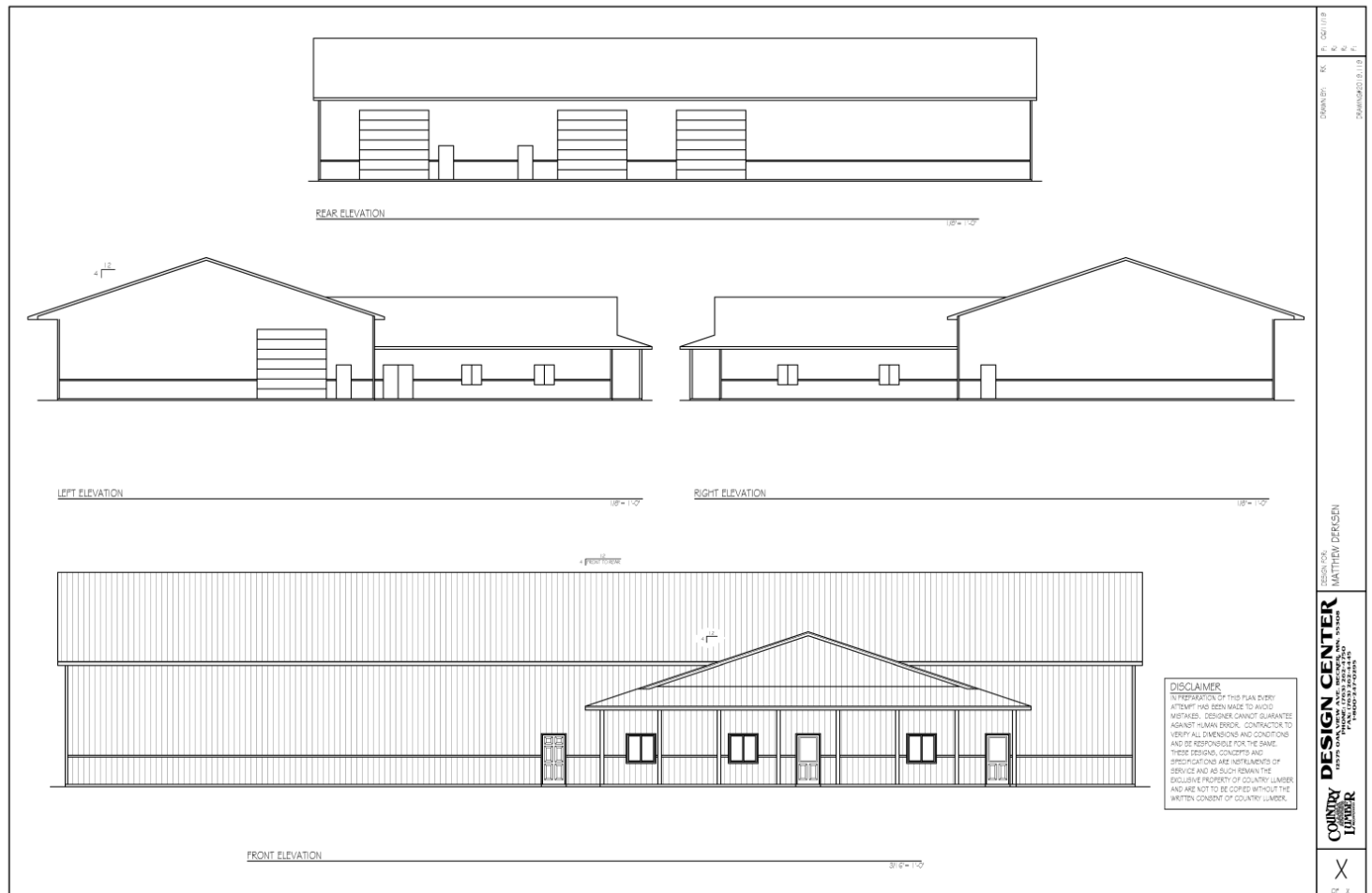
## SF with outside Storage



Covered Storage



Covered Storage 2



Office/Warehouse Elevations

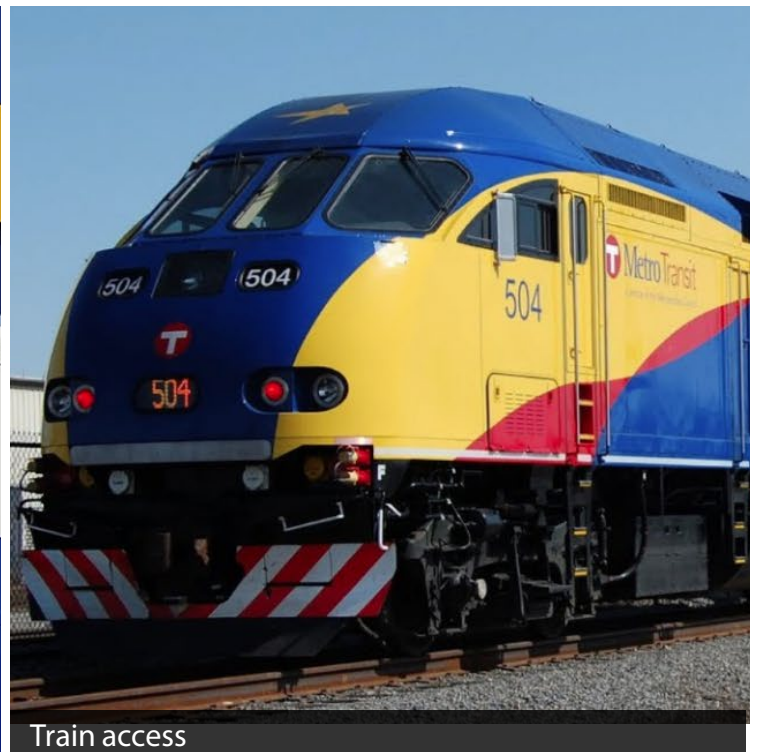




Northstar to site



Big Lake to Minneapolis



Train access