

FOR LEASE

OAKLAND OFFICE COMMONS
1225 E BIG BEAVER ROAD
TROY, MI 48083



7,000 TO 24,015 SF FLEX SPACE AVAILABLE

PROPERTY FEATURES:

- Hi-Tech office and R&D flex buildings available seconds from I-75 in Troy
- 7,000 to 24,015 SF flex space available
- Exterior building and monument signage available along Big Beaver Road
- Located just East of Rochester Road along Big Beaver Road
- Heavy power and overhead doors available to R&D areas
- High number of local amenities: hotels, restaurants & shopping centers
- 6:1000 parking ratio



FOR MORE INFORMATION PLEASE CONTACT:

ROBERT GAGNIUK
robert.gagniuk@freg.com

GREGGORY KENT
greggory.kent@freg.com

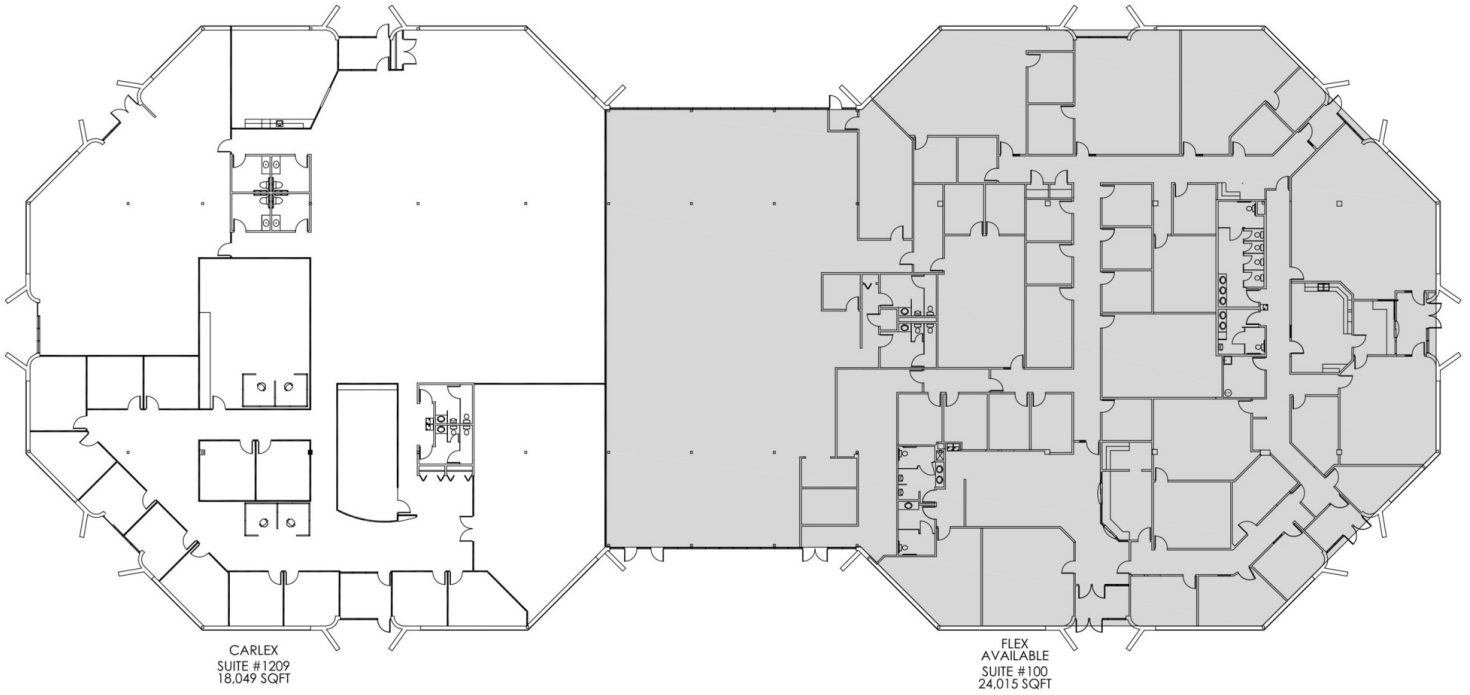
248.324.2000

eCODE 246

The information provided herein along with any attachment(s) was obtained from sources believed to be reliable, however, Friedman Real Estate makes no guarantees, warranties, or representations as to the completeness or accuracy of such information and legal counsel is advised. All information provided is subject to verification and no liability for reliance on such information or errors or omissions is assumed. The presentation of this property is submitted subject to errors, omissions, change of price or conditions, prior sale or lease, or withdrawal without notice. Copyright © 2018 Friedman Real Estate. All rights reserved.

FOR LEASE

OAKLAND OFFICE COMMONS
1225 E BIG BEAVER ROAD
TROY, MI 48083



FOR MORE INFORMATION PLEASE CONTACT:

ROBERT GAGNIUK robert.gagniuk@freg.com

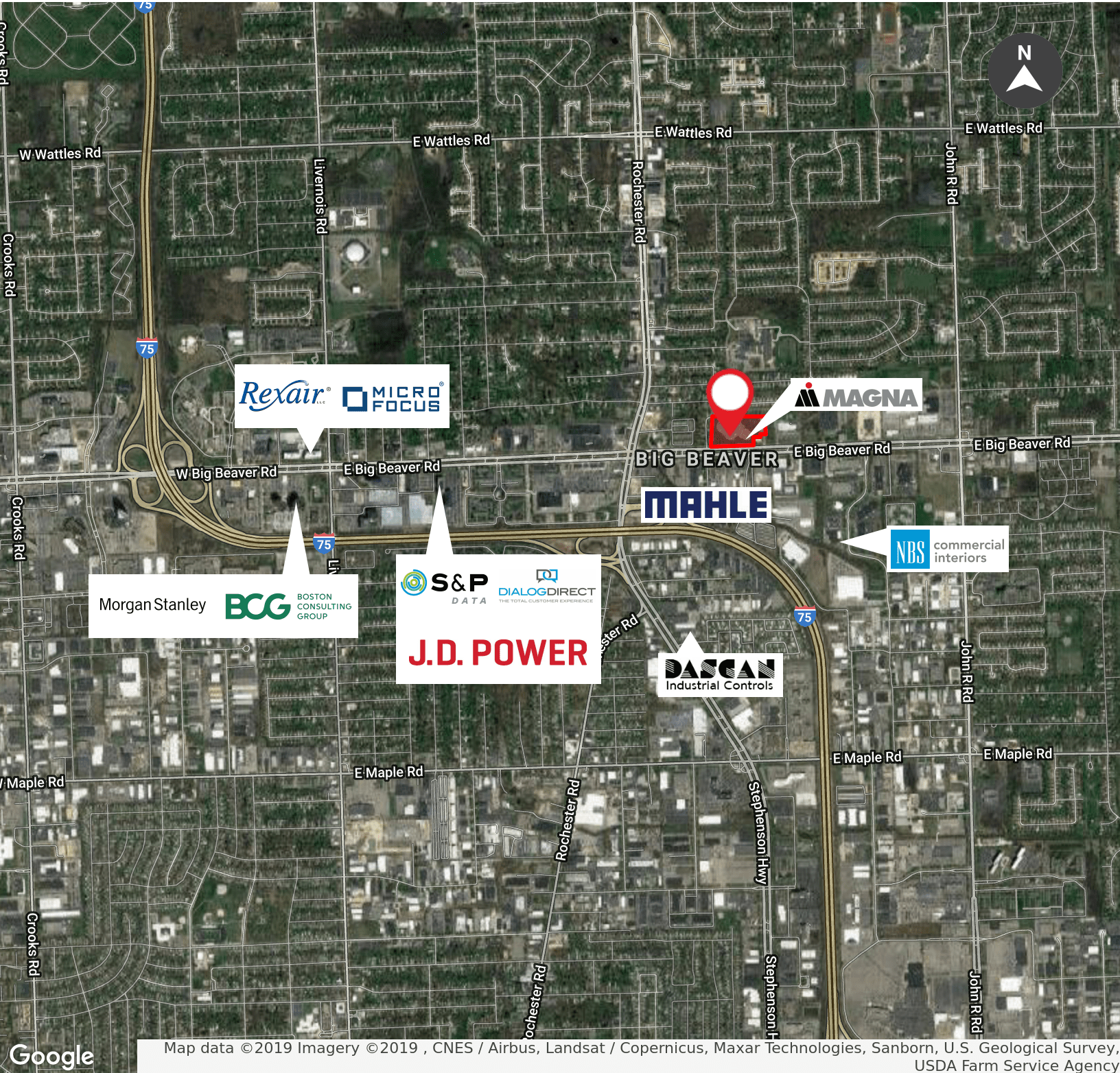
GREGGORY KENT greggory.kent@freg.com

248.324.2000

eCODE 246

FOR LEASE

OAKLAND OFFICE COMMONS
1225 E BIG BEAVER ROAD
TROY, MI 48083



Map data ©2019 Imagery ©2019, CNES / Airbus, Landsat / Copernicus, Maxar Technologies, Sanborn, U.S. Geological Survey, USDA Farm Service Agency

FOR MORE INFORMATION PLEASE CONTACT:

ROBERT GAGNIUK robert.gagniuk@freg.com

GREGGORY KENT greggory.kent@freg.com

248.324.2000

eCODE 246