

49081 WIXOM TECH DRIVE
WIXOM, MICHIGAN

INDUSTRIAL FOR SALE OR LEASE
36,810 Square Feet Available



**SIGNATURE
ASSOCIATES**
KNOW SIGNATURE | KNOW RESULTS

FORMERLY TRW



PROPERTY FEATURES

- 36,810 square feet available
- 11,050 square feet of office
- 24' clear height
- (1) 12x14 grade level door, (2) truckwells
- Zoned M-1
- 102 parking spaces
- 1,200 amps, 480 volts, 3-phase power
- High image building formerly occupied by TRW with upscale offices and air-conditioned shop
- Shop offices/lab can be removed
- Epoxy floor, painted warehouse walls and roof deck, air compressor lines and shop restrooms
- 11,500 square feet in warehouse air-conditioned
- Access to I-96 within ½ mile



For more information, please contact:

JEFF LEMANSKI
(248) 359 0641
jlemanski@signatureassociates.com

JIM MONTGOMERY
(248) 359 0614
jmontgomery@signatureassociates.com

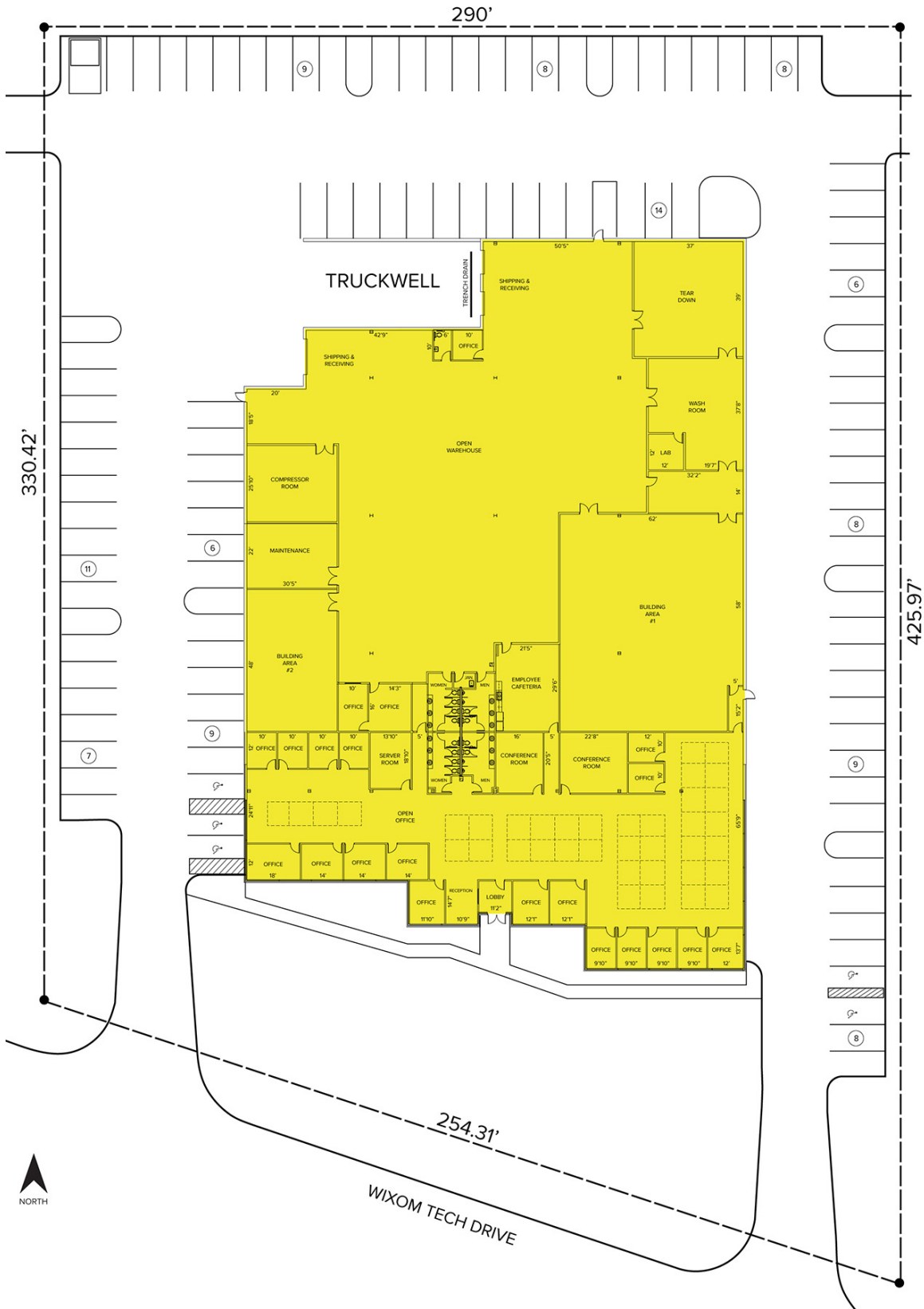
SIGNATURE ASSOCIATES
One Towne Square, Suite 1200
Southfield, MI 48076
www.signatureassociates.com

49081 Wixom Tech Drive – Wixom, Michigan

Industrial For Sale or Lease

36,810
Square Feet
AVAILABLE

Site Plan



For more information, please contact:
JEFF LEMANSKI
 (248) 359 0641
 jlemanski@signatureassociates.com

JIM MONTGOMERY
 (248) 359 0614
 jmontgomery@signatureassociates.com

SIGNATURE ASSOCIATES
 One Towne Square, Suite 1200
 Southfield, MI 48076
 www.signatureassociates.com

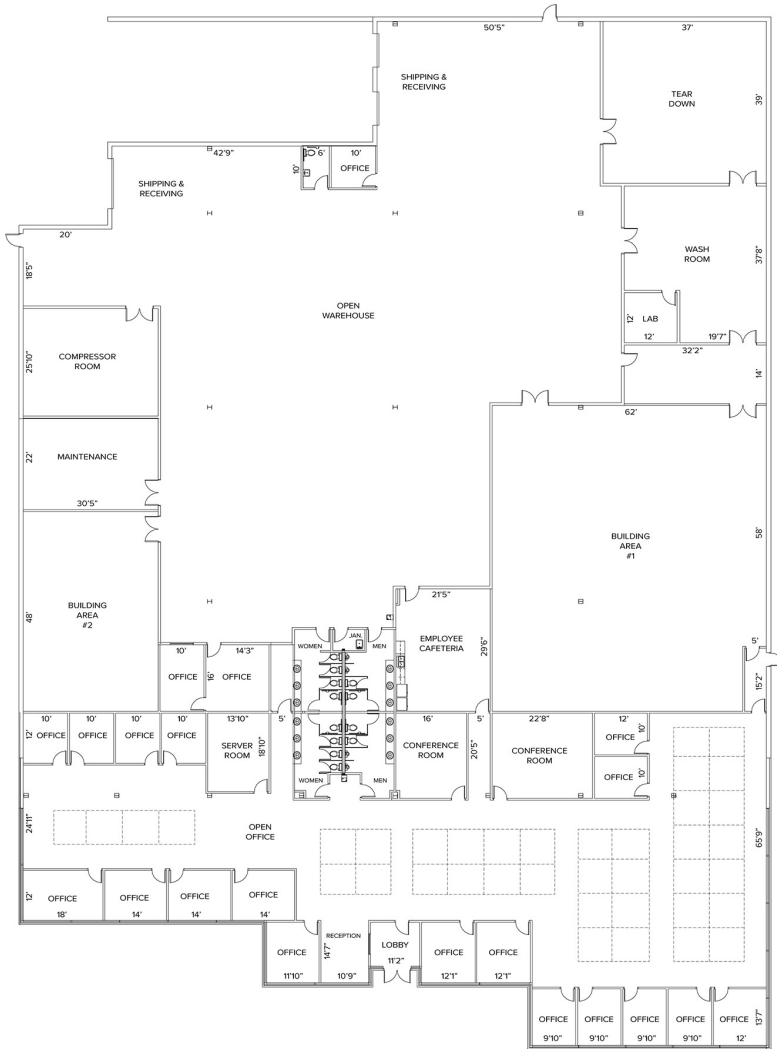
Information is subject to verification and no liability for errors or omissions is assumed. Price is subject to change and listing withdrawal.

49081 Wixom Tech Drive – Wixom, Michigan

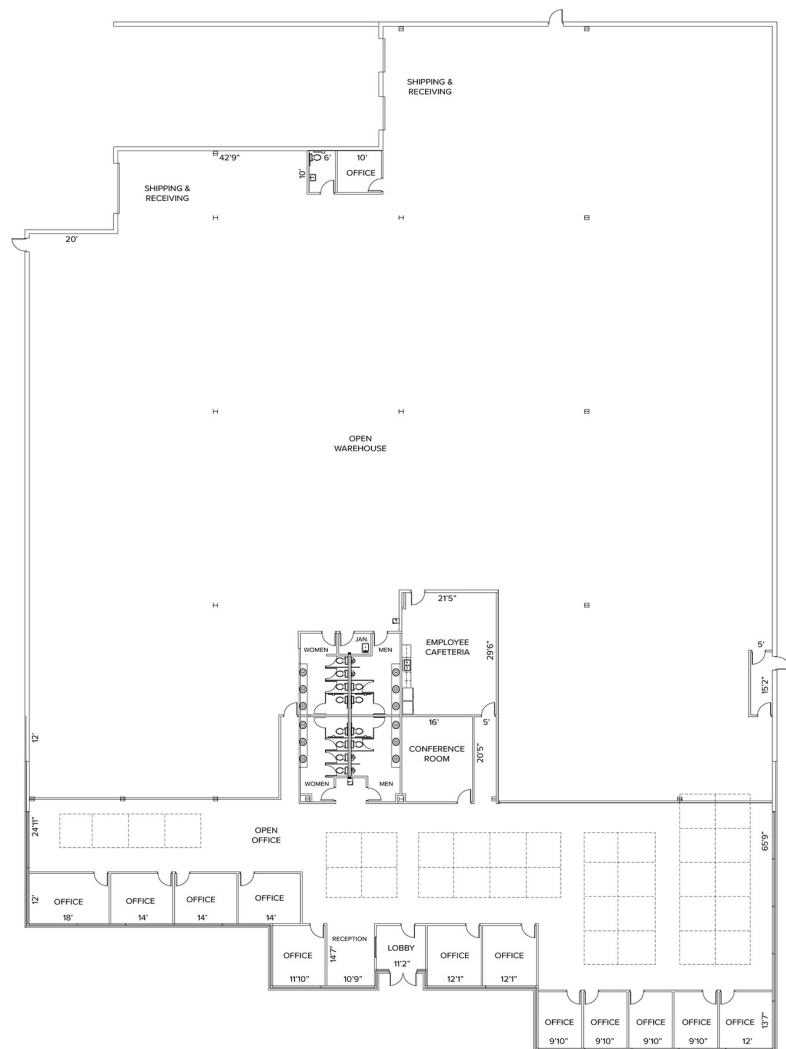
Industrial For Sale or Lease

36,810
Square Feet
AVAILABLE

Floor Plan



Possible Floor Plan



For more information, please contact:

JEFF LEMANSKI
(248) 359 0641
jlemanski@signatureassociates.com

JIM MONTGOMERY
(248) 359 0614
jmontgomery@signatureassociates.com

SIGNATURE ASSOCIATES
One Towne Square, Suite 1200
Southfield, MI 48076
www.signatureassociates.com

49081 Wixom Tech Drive – Wixom, Michigan

Industrial For Sale or Lease

36,810
Square Feet
AVAILABLE

Aerial



For more information, please contact:

JEFF LEMANSKI

(248) 359 0641

jlemanski@signatureassociates.com

JIM MONTGOMERY

(248) 359 0614

jmontgomery@signatureassociates.com

SIGNATURE ASSOCIATES

One Towne Square, Suite 1200

Southfield, MI 48076

www.signatureassociates.com