

VAN DOREN'S LANDING FLOW BUILDING

23500 64TH AVE S, KENT, WA



BRIAN BRUININKS, CCIM

(206) 856-6249

bbruininks@andoverco.com

SHANE MAHVI

(858) 442-0441

smahvi@andoverco.com





VAN DOREN'S LANDING FLOW BLDG

Located in the heart of Kent the Flow Building is minutes away from SR-167, I-5, and downtown Kent.

FEATURES

Total SF: **55,850 SF**

Office SF: **Approx. 4,600 SF, up to 8,008 SF available**

Docks: **16**

Oversized GL Doors: **3**

Clear Height: **24'**

Power: **600 amps 277/480v**

Insulated, upgraded lighting, and five (5) ton bridge crane

New entrance canopy under construction

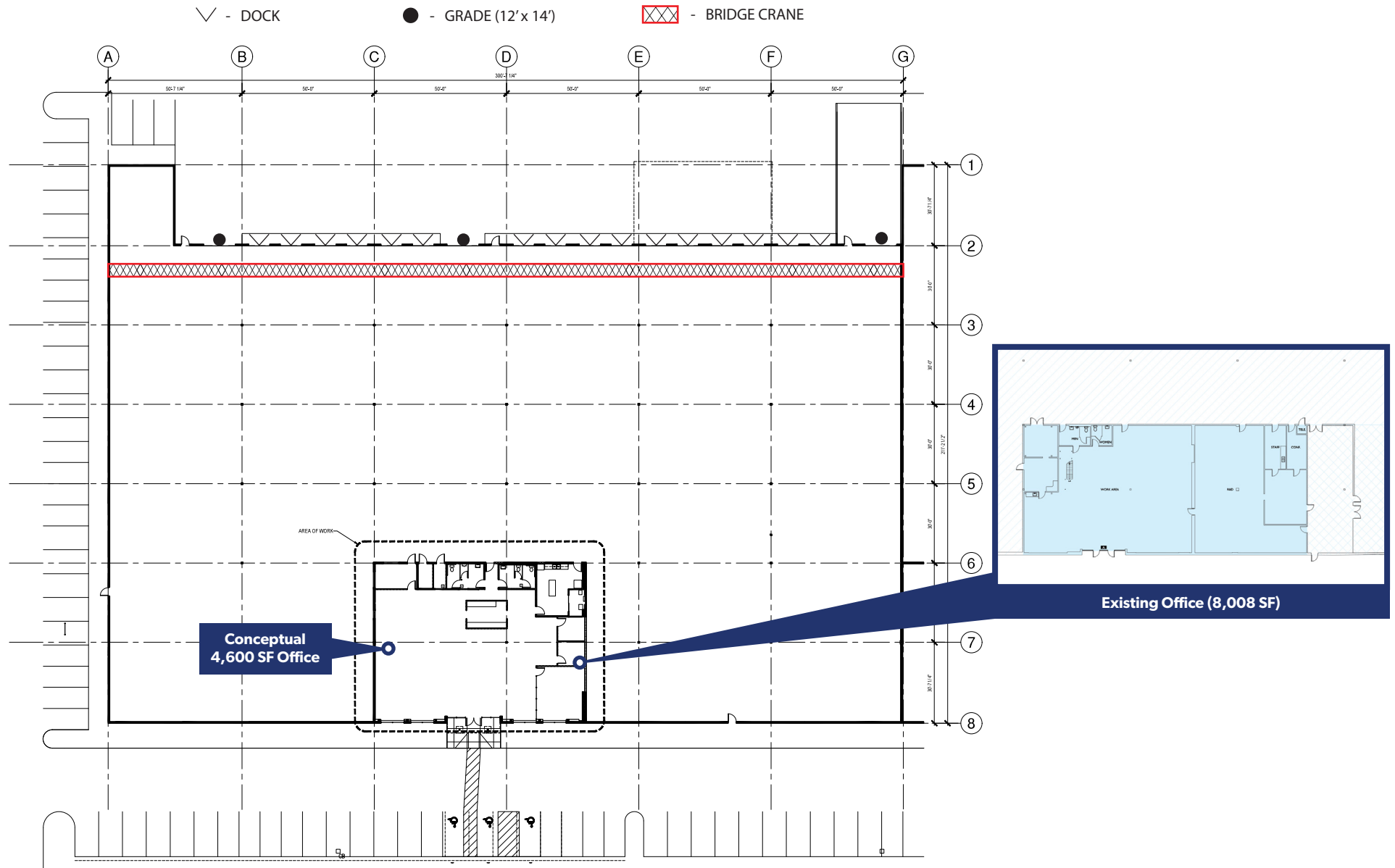
Potential to expand into approx. 37,000 SF adjacent suite, for a total of 92,580 SF - additional power (up to 600 amps) available with expansion

Available: **Now**

Rates: **Contact brokers**

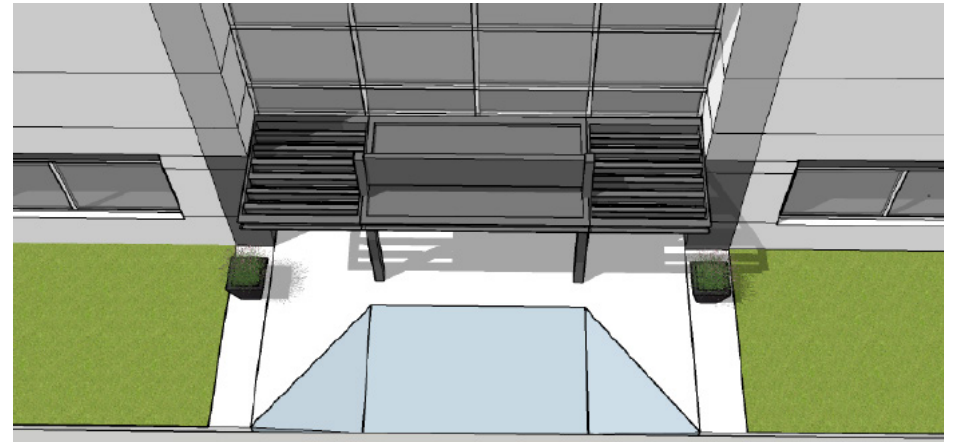


FLOOR PLAN



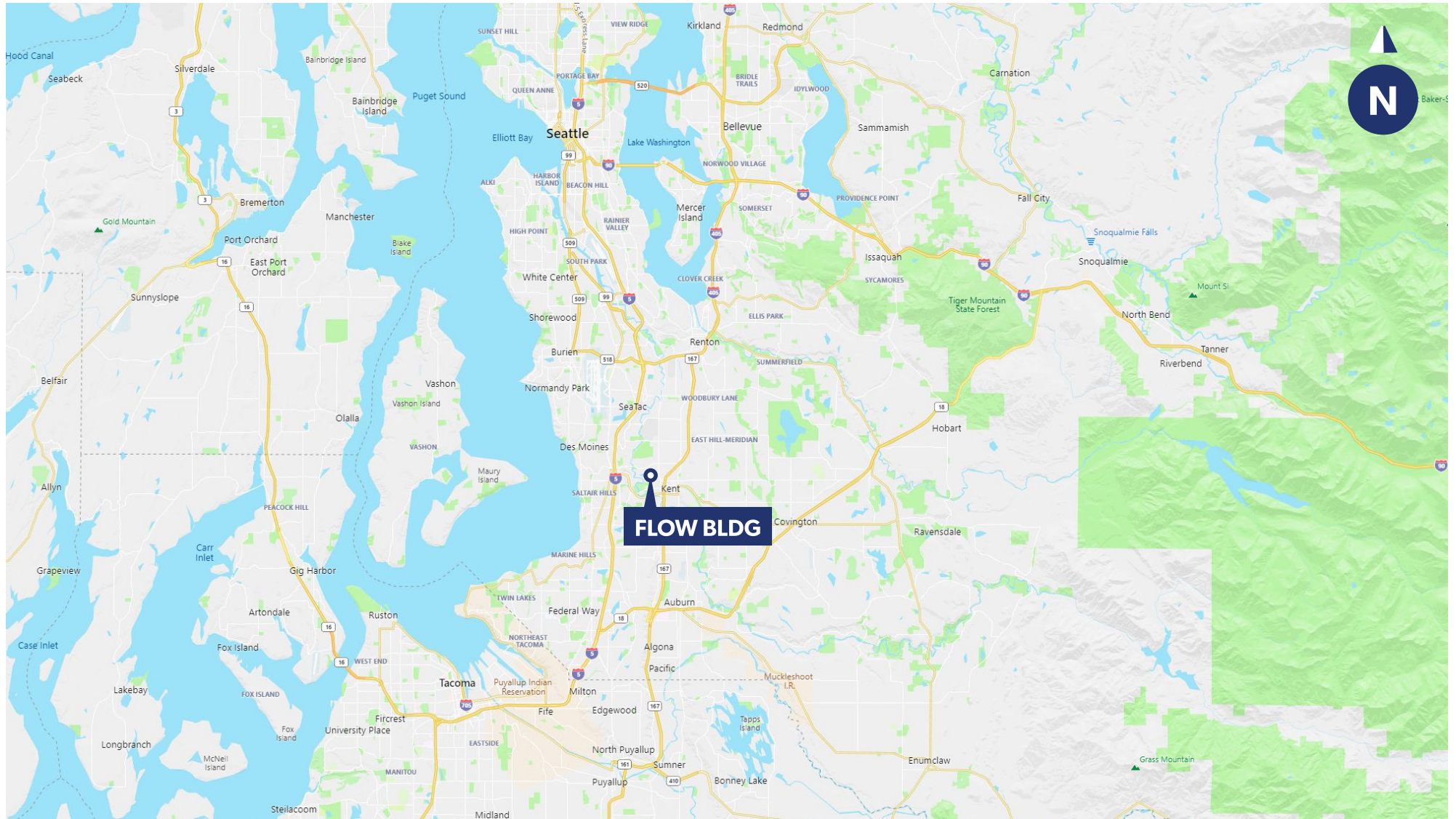
The information contained herein has been obtained from reliable sources, but is not guaranteed. A prospective buyer/tenant should verify each item relating to this property and all information contained herein.

NEW ENTRANCE CANOPY



The information contained herein has been obtained from reliable sources, but is not guaranteed. A prospective buyer/tenant should verify each item relating to this property and all information contained herein.

LOCATION MAP



BRIAN BRUININKS, CCIM
(206) 856-6249
bbruininks@andoverco.com

SHANE MAHVI
(858) 442-0441
smahvi@andoverco.com

**THE ANDOVER
COMPANY, INC.**
CORFAC INTERNATIONAL

AERIAL MAP



BRIAN BRUININKS, CCIM
(206) 856-6249
bbruininks@andoverco.com

SHANE MAHVI
(858) 442-0441
smahvi@andoverco.com

 **THE ANDOVER
COMPANY, INC.**
CORFAC INTERNATIONAL