

FOR LEASE

CENTER PLAZA

PRIME WAREHOUSE/FLEX SPACE AVAILABLE

2620 WILLIAMSON PLACE

Dupont, WA 98327

BUILDING 2 - SUITE 133



PROPERTY INFORMATION

- + Available September 1, 2019
- + 1,760 total SF available
 - 727 SF warehouse
 - 1,033 SF office (318 SF traditional office, 715 SF former food production)
- + Corporate image with high quality finishes
- + One mile from Interstate 5 (exit 119)
- + Immediate access to Joint Base Lewis McChord (JBLM)
- + 21' clear height
- + 3-phase power
- + 14' x 12' grade-level loading
- + Abundant parking



CONTACT US

MONTE DECKER, CCIM

Senior Vice President
+1 253 596 0041
monte.decker@cbre.com

CHRIS COWLES

Senior Associate
+1 253 596 0048
chris.cowles@cbre.com

CBRE, INC.

1201 Pacific Avenue
Suite 1502
Tacoma, WA 98402

www.cbre.us/tacoma



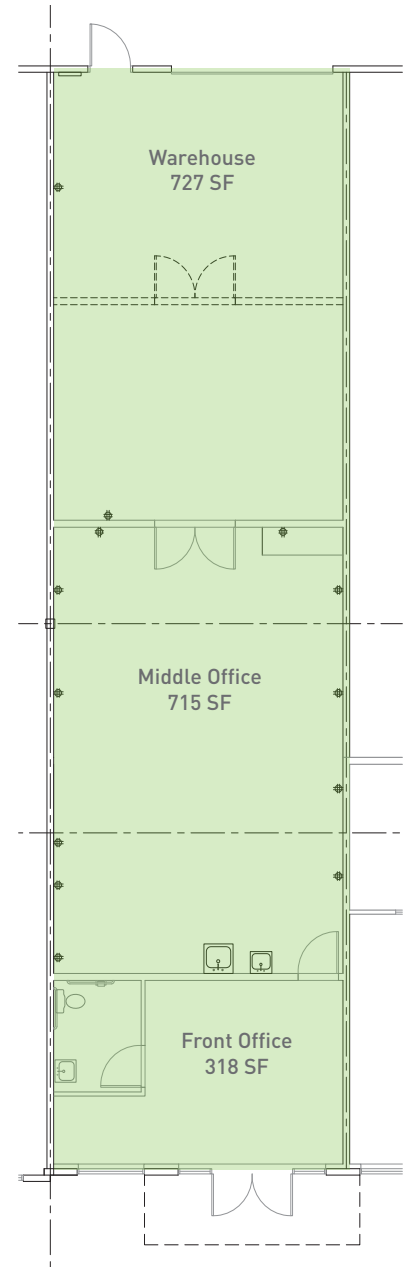
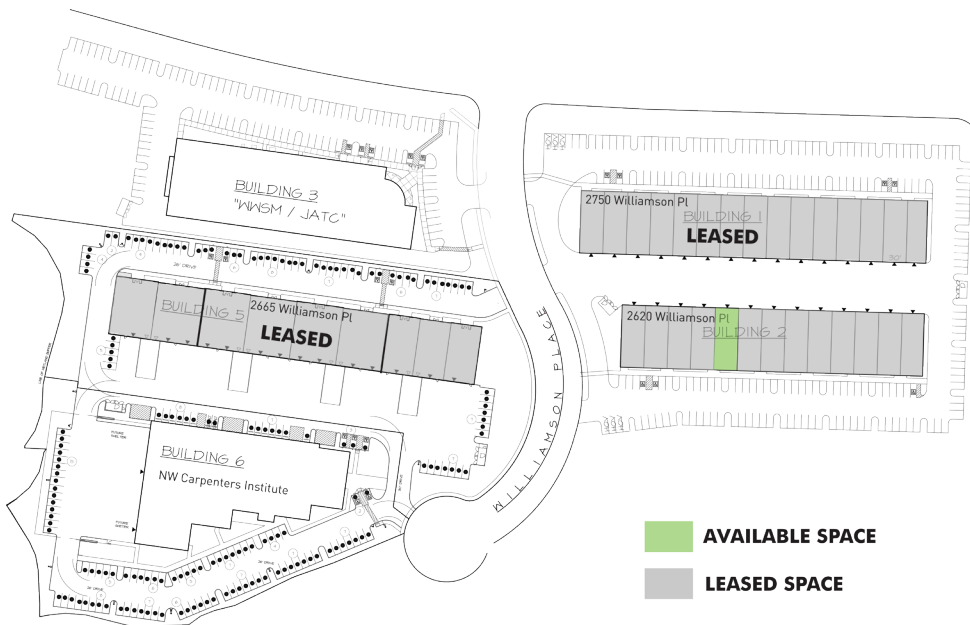
CBRE

FOR LEASE CENTER PLAZA

**2620
WILLIAMSON PLACE**
Dupont, WA 98327



SITE PLAN



AVAILABLE SPACE

BUILDING 2:

SF	Loading	Clear Height	Price	Comments
727 SF warehouse 1,033 SF office	1 GL	21'	\$0.75 shell \$0.95 office	<ul style="list-style-type: none"> 715 SF of middle office is climate controlled former food production area



CONTACT US

MONTE DECKER, CCIM

Senior Vice President
+1 253 596 0041
monte.decker@cbre.com

CHRIS COWLES

Senior Associate
+1 253 596 0048
chris.cowles@cbre.com

CBRE, INC.

1201 Pacific Avenue
Suite 1502
Tacoma, WA 98402

www.cbre.us/tacoma



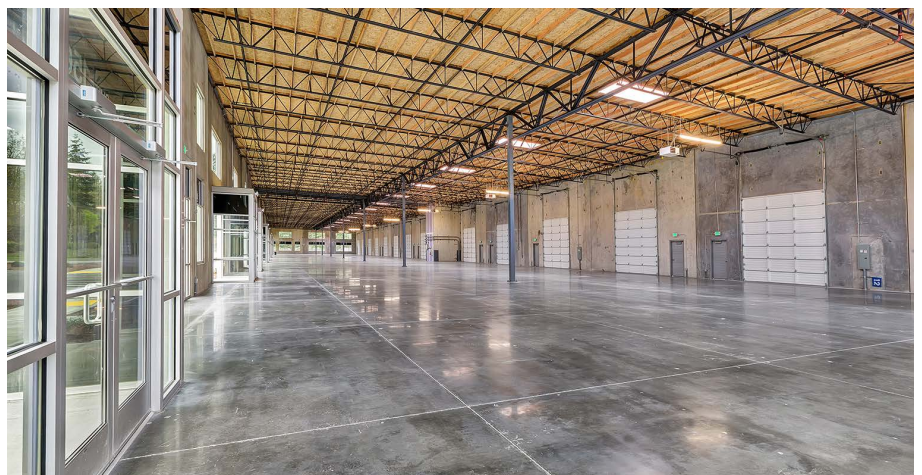
CBRE

FOR LEASE
CENTER PLAZA

2620
WILLIAMSON PLACE
Dupont, WA 98327



BUILDING PHOTOS



www.cbre.us/tacoma



CBRE

FOR LEASE CENTER PLAZA

2620
WILLIAMSON PLACE
Dupont, WA 98327



LOCATION OVERVIEW



CONTACT US

MONTE DECKER, CCIM

Senior Vice President
+1 253 596 0041
monte.decker@cbre.com

CHRIS COWLES

Senior Associate
+1 253 596 0048
chris.cowles@cbre.com

CBRE, INC.

1201 Pacific Avenue
Suite 1502
Tacoma, WA 98402

© 2019 CBRE, Inc. All rights reserved. This information has been obtained from sources believed reliable, but has not been verified for accuracy or completeness. You should conduct a careful, independent investigation of the property and verify all information. Any reliance on this information is solely at your own risk. CBRE and the CBRE logo are service marks of CBRE, Inc. All other marks displayed on this document are the property of their respective owners. Photos herein are the property of their respective owners. Use of these images without the express written consent of the owner is prohibited. RB 08.12.19

www.cbre.us/tacoma



CBRE