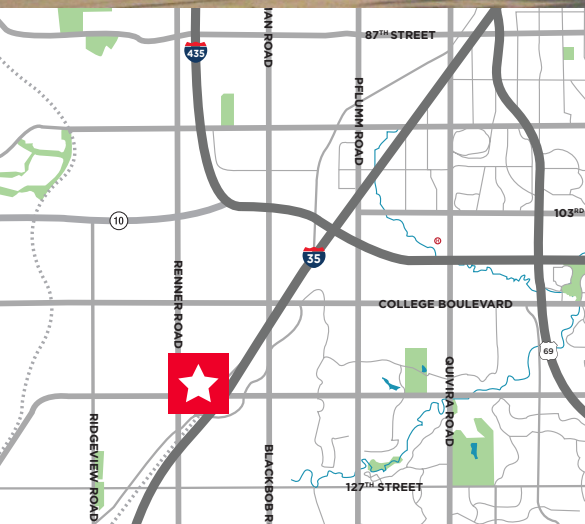




FOR LEASE  
**16510 W 118th Street**  
Olathe, KS



**1,724 SF Office/Warehouse**  
**Lease Rate: \$10.00 PSF Gross Industrial**

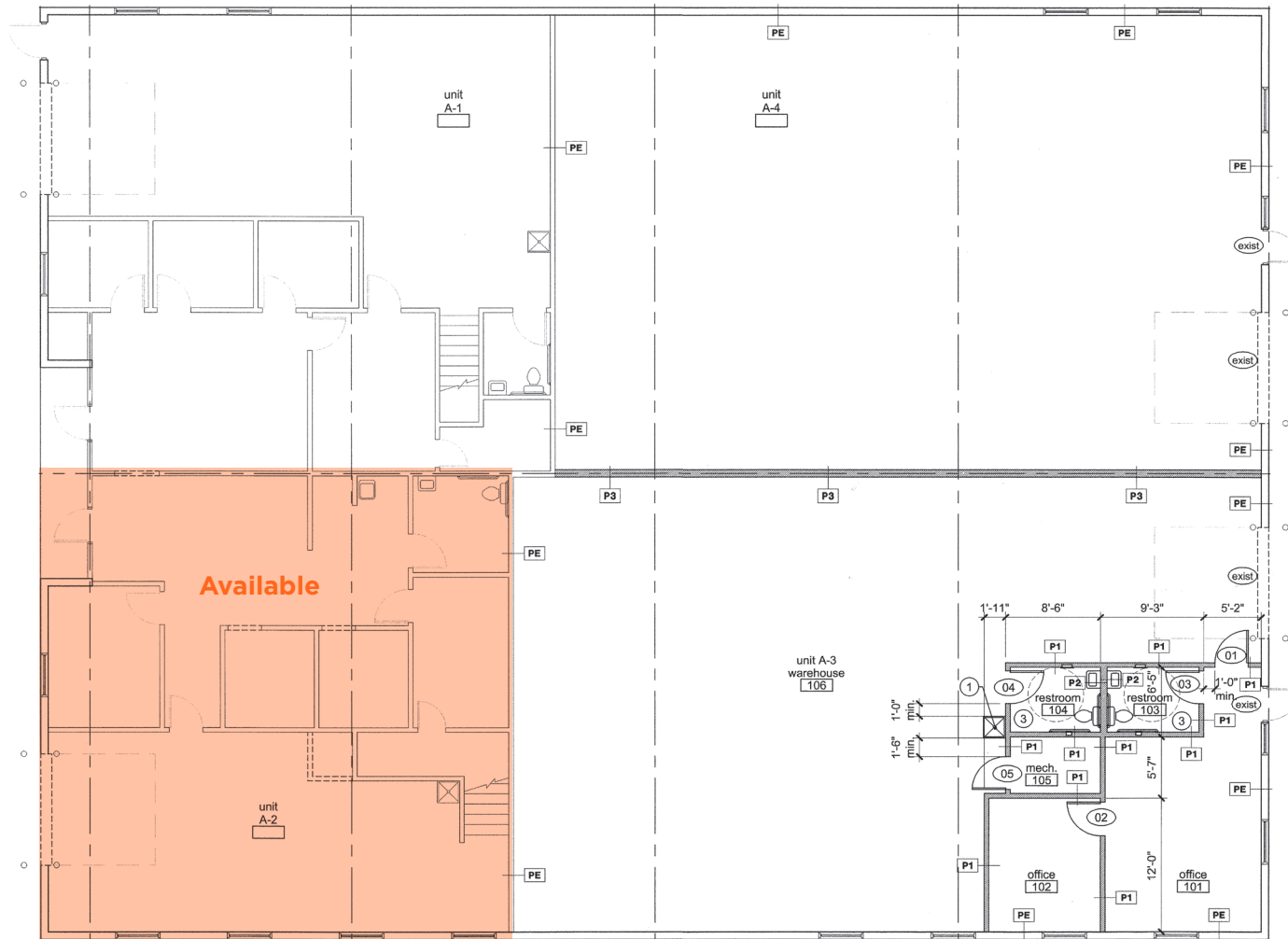
**Property Highlights**

- 925 SF of office space
- One drive-in door (10' x 10')
- 14' - 16' clear height
- Great access to I-35, I-435 and K-10
- CAM - \$1.92 PSF

**Robert M. Holland, CCIM**  
Senior Director  
Direct +1 816 412 0214  
Mobile +1 913 424 4249  
rob.holland@cushwake.com

4600 Madison Avenue, Suite 800  
Kansas City, MO 64112  
Main +1 816 221 2200  
Fax +1 816 842 2798  
**cushmanwakefield.com**

### Floor Plan



### Building Features

- Construction Type:** Block on steel frame and masonry
- Year Built:** 2005
- Floor Type:** Concrete
- Electrical:** 3 Phase
- Lighting:** Halide & fluorescent
- Heat Type:** Electric
- Zoning:** M-2
- Parking:** Ample



**Aerial**

