

# 4,368 & 5,704 SF RETAIL SPACE FOR LEASE



## 920 MAIN STREET | KANSAS CITY, MO

- First floor retail at 10Main Center
- 10Main includes luxury apartments and renovated office space
- Directly on Streetcar line
- High floor to ceiling windows and exposed ceilings
- Quick access to I-35, I-670, and I-70

DEMOGRAPHICS	1 MILE	3 MILES	5 MILES
Population	9,618	13,921	16,144
Daytime Population	59,198	204,697	392,566
Average HH Income	\$74,110	\$54,111	\$57,053
# Businesses	2,556	7,393	12,904
# Employees	61,670	173,151	278,960

For more information contact:

BROOKE SCHWOB  
816.268.9110  
bschwob@lane4group.com

DEVIN SCHUSTER  
816.268.7575  
dschuster@lane4group.com



10 MAIN CENTER  
 920 Main St, Kansas City, MO, 64105



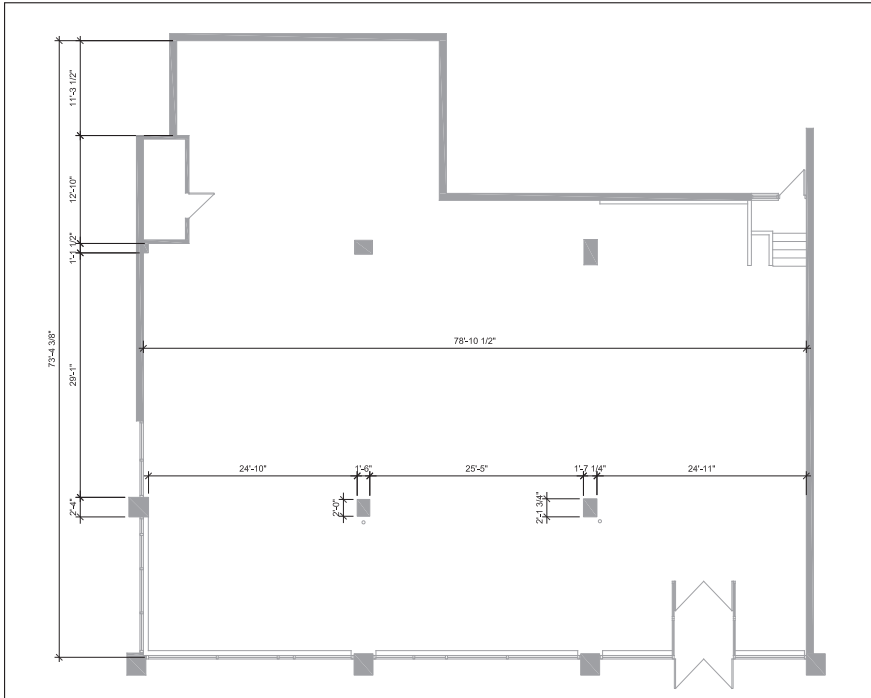
For more information contact:

BROOKE SCHWOB  
 816.268.9110  
 bschwob@lane4group.com

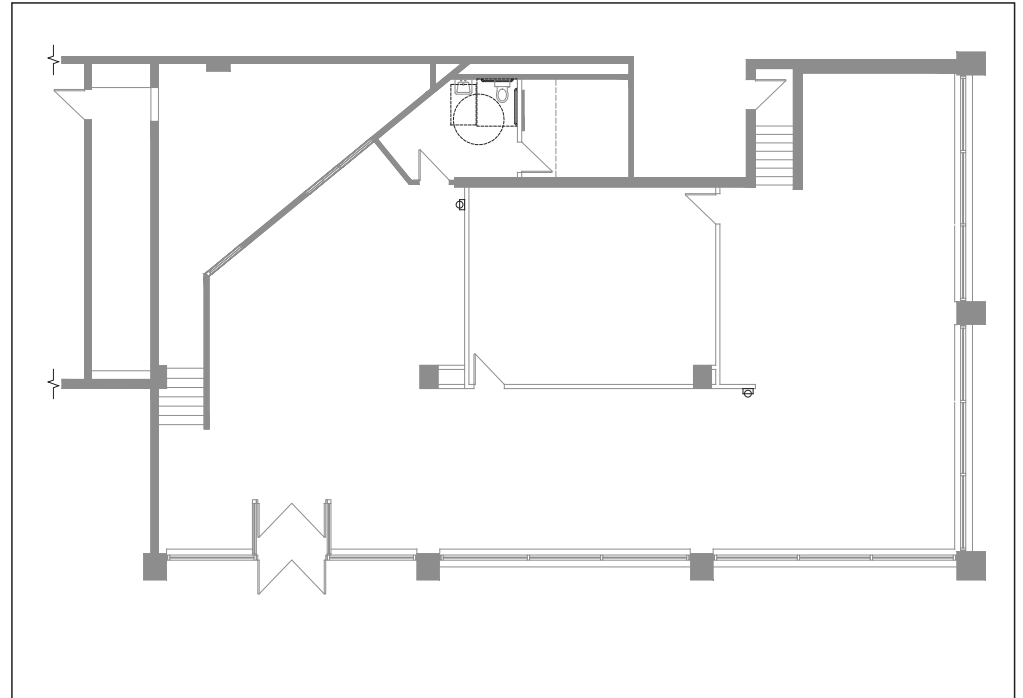
DEVIN SCHUSTER  
 816.268.7575  
 dschuster@lane4group.com



10 MAIN CENTER  
920 Main St, Kansas City, MO, 64105



**SUITE 170**  
5,704 SF



**SUITE 180**  
4,368 SF

For more information contact:

BROOKE SCHWOB  
816.268.9110  
bschwob@lane4group.com

DEVIN SCHUSTER  
816.268.7575  
dschuster@lane4group.com

