

1.71 Acres

7801 Hwy 287 & 3317 S. Shady Ln.

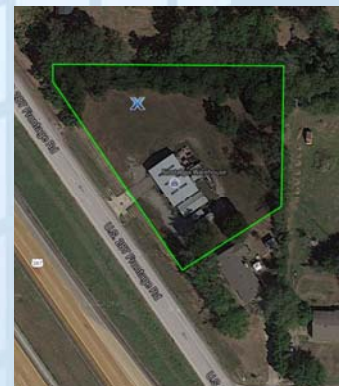
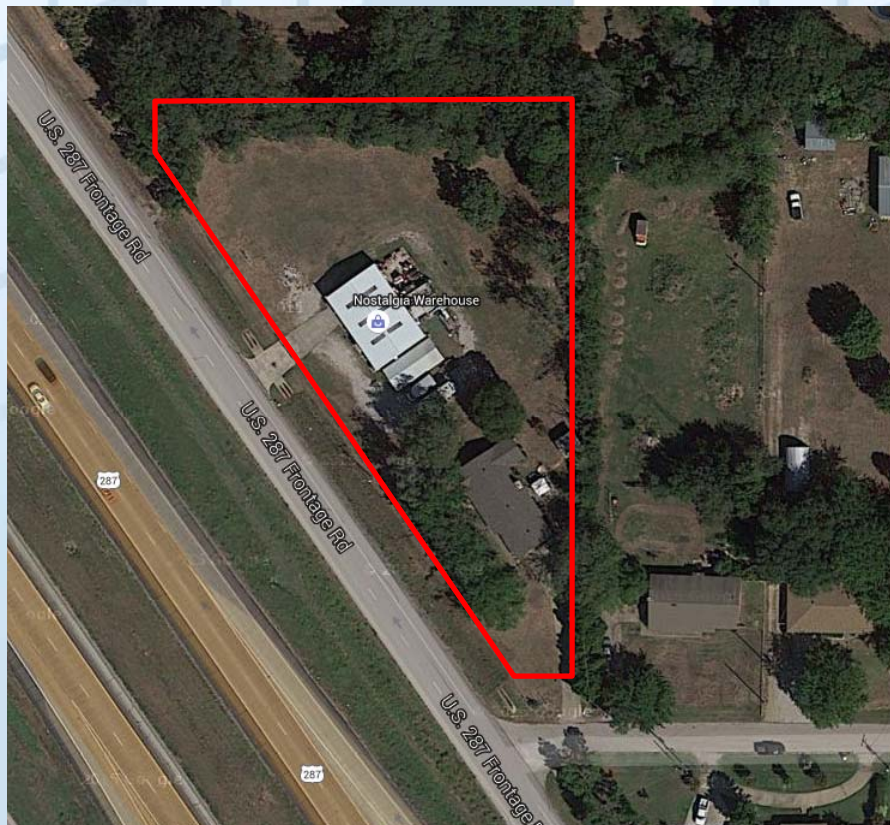
Arlington, Texas

Offered at \$589,300

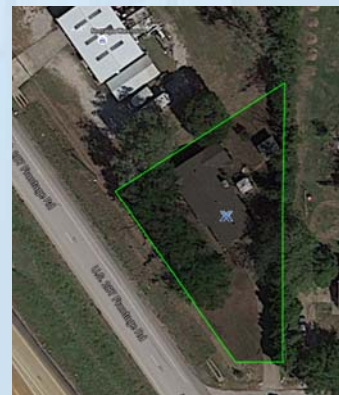
2,400 sf building; 1,695 sf 3-2-2 ranch style home

Located between Turner Warnell and Eden Rd; north side of freeway within the Arlington city limits. 300 ft frontage on access road of Highway 287. Approx 60 x 40 metal bldg with bathroom and garage door, zoned F1 Commercial, on 1.296 acre parcel.

Also a fully bricked home (adjacent) 3 bedroom, 2 bath ranch style; 3-2-2, on .40 acre lot



2,400 sf. Metal Building



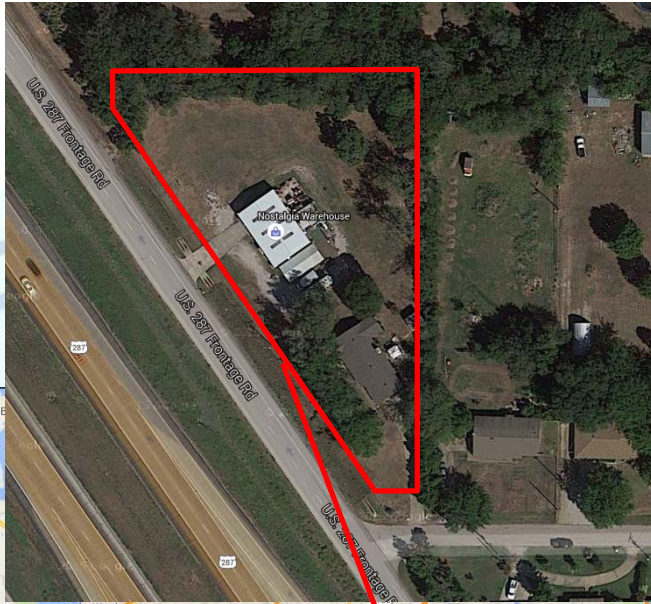
1,695 sf Ranch Style Home
on .40 acre lot

Another Great Investment Opportunity from:

Tom Lawless, Broker | tlawless@harvardco.com | Direct: 817-808-3246

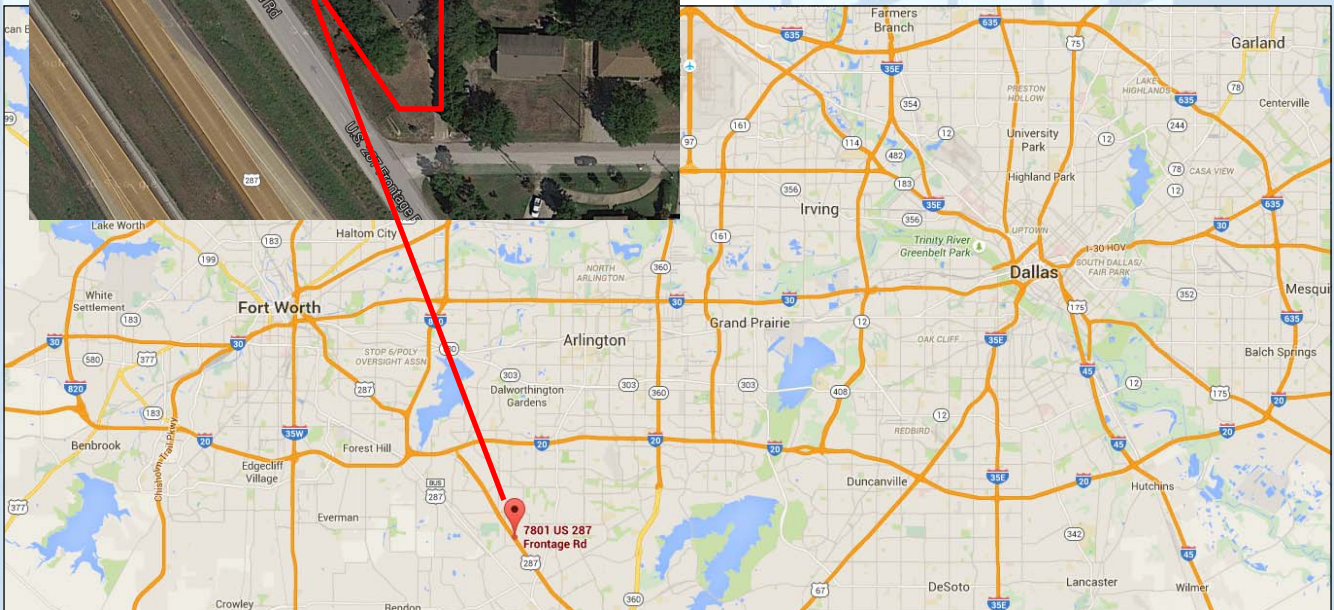
The information contained herein has been secured from sources deemed reliable. However, Harvard Companies, or its associated companies, employees, or representatives make no guarantees, warranties, or representations as to the completeness or accuracy thereof. References to square footage or age are approximate only. The buyer/lessee must verify all the information contained herein and bear all risks for any inaccuracies.

3500 Oak Lawn Ave Suite 325 | Dallas TX | 75219 214-373-0007 | www.HarvardCo.com



1.71 Total Acres
2,400 sf building
1,695 sf ranch style home
300 sf of 287 frontage

Located between Turner Warnell and Eden Rd;
north side of freeway; Arlington city limits.



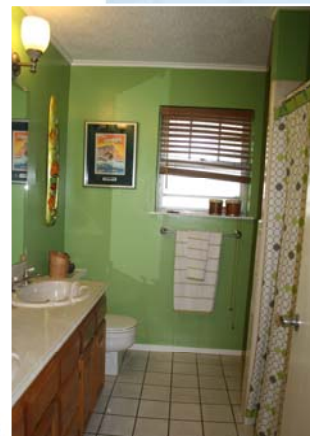
300 ft frontage on access road of Highway 287N. Approx 60 x 40 metal bldg with bathroom and garage door, zoned F1 Commercial. 1.296 Acres.
And a fully bricked 3 bedroom, 2 bath ranch style home; 3-2-2 on .4 acre lot.

Another Great Investment Opportunity from:

Tom Lawless, Broker | tlawless@harvardco.com | Direct: 817-808-3246

The information contained herein has been secured from sources deemed reliable. However, Harvard Companies, or its associated companies, employees, or representatives make no guarantees, warranties, or representations as to the completeness or accuracy thereof. References to square footage or age are approximate only. The buyer/lessee must verify all the information contained herein and bear all risks for any inaccuracies.

3500 Oak Lawn Ave Suite 325 | Dallas TX | 75219 214-373-0007 | www.HarvardCo.com



Another Great Investment Opportunity from:

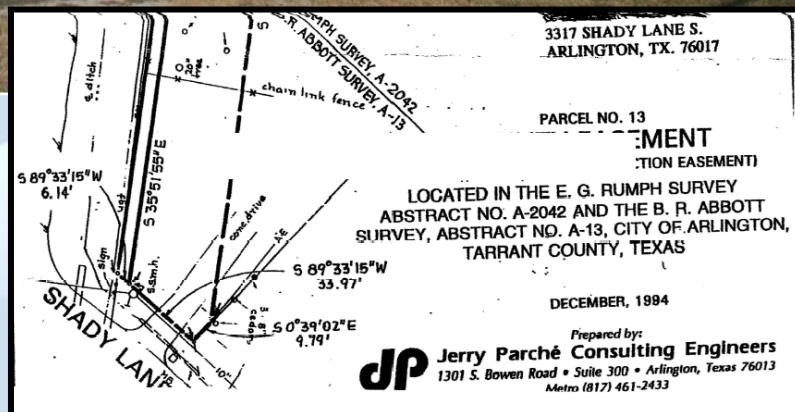
Tom Lawless, Broker | tlawless@harvardco.com | Direct: 817-808-3246

The information contained herein has been secured from sources deemed reliable. However, Harvard Companies, or its associated companies, employees, or representatives make no guarantees, warranties, or representations as to the completeness or accuracy thereof. References to square footage or age are approximate only. The buyer/lessee must verify all the information contained herein and bear all risks for any inaccuracies.

3500 Oak Lawn Ave Suite 325 | Dallas TX | 75219 214-373-0007 | www.HarvardCo.com



1.71 Total Acres
7801 Hwy 287
3317 S. Shady Lane
Arlington, Texas



2,400 sf building; 1,695 sf 3-2-2 ranch style home
Offered at \$589,300

Located between Turner Warnell and Eden Rd; north side of freeway within the Arlington city limits.
300 ft frontage on access road of Highway 287. Approx 60 x 40 metal bldg Zoned F1 Commercial with bathroom and garage door.
And 3317 S Shady Ln. (adjacent), a fully bricked 3 bedroom, 2 bath ranch style home.

Contact me today to explore the possibilities of this property further.
Tom Lawless, Broker
817.808.3246

Another Great Investment Opportunity from:

Tom Lawless, Broker | tlawless@harvardco.com | Direct: 817-808-3246

The information contained herein has been secured from sources deemed reliable. However, Harvard Companies, or its associated companies, employees, or representatives make no guarantees, warranties, or representations as to the completeness or accuracy thereof. References to square footage or age are approximate only. The buyer/lessee must verify all the information contained herein and bear all risks for any inaccuracies.

3500 Oak Lawn Ave Suite 325 | Dallas TX | 75219 214-373-0007 | www.HarvardCo.com