

FOR SALE

FORMER BANK BRANCH

1400 South Rainbow Boulevard, Las Vegas, Nevada 89146



Asking \$2,100,000 or \$220.00 PSF

Area Description

1400 S. Rainbow Blvd. has frontage on Rainbow Blvd. and Del Rey Ave., a major Las Vegas retail corridor and is within 1.5 miles of the US-95 freeway and 8.5 miles of the I-215 beltway.

Property Description

1400 S. Rainbow is a single-story building consisting of ±9,539 square feet. The building is a former bank branch with a vault and drive-thru. The densely populated area has strong demographics.

Property Highlights

- Built in 1996
- APN: 163-02-201-007
- Parking ratio: 3.77/1,000
- Covered and surface parking available
- Former bank branch with vault and drive-thru



Jayne Cayton
Vice President
Lic #S.0043335
702.734.4506
jcayton@voitco.com

Matt Kreft
Senior Associate
Lic #S.0063422
702.734.4512
mkreft@voitco.com

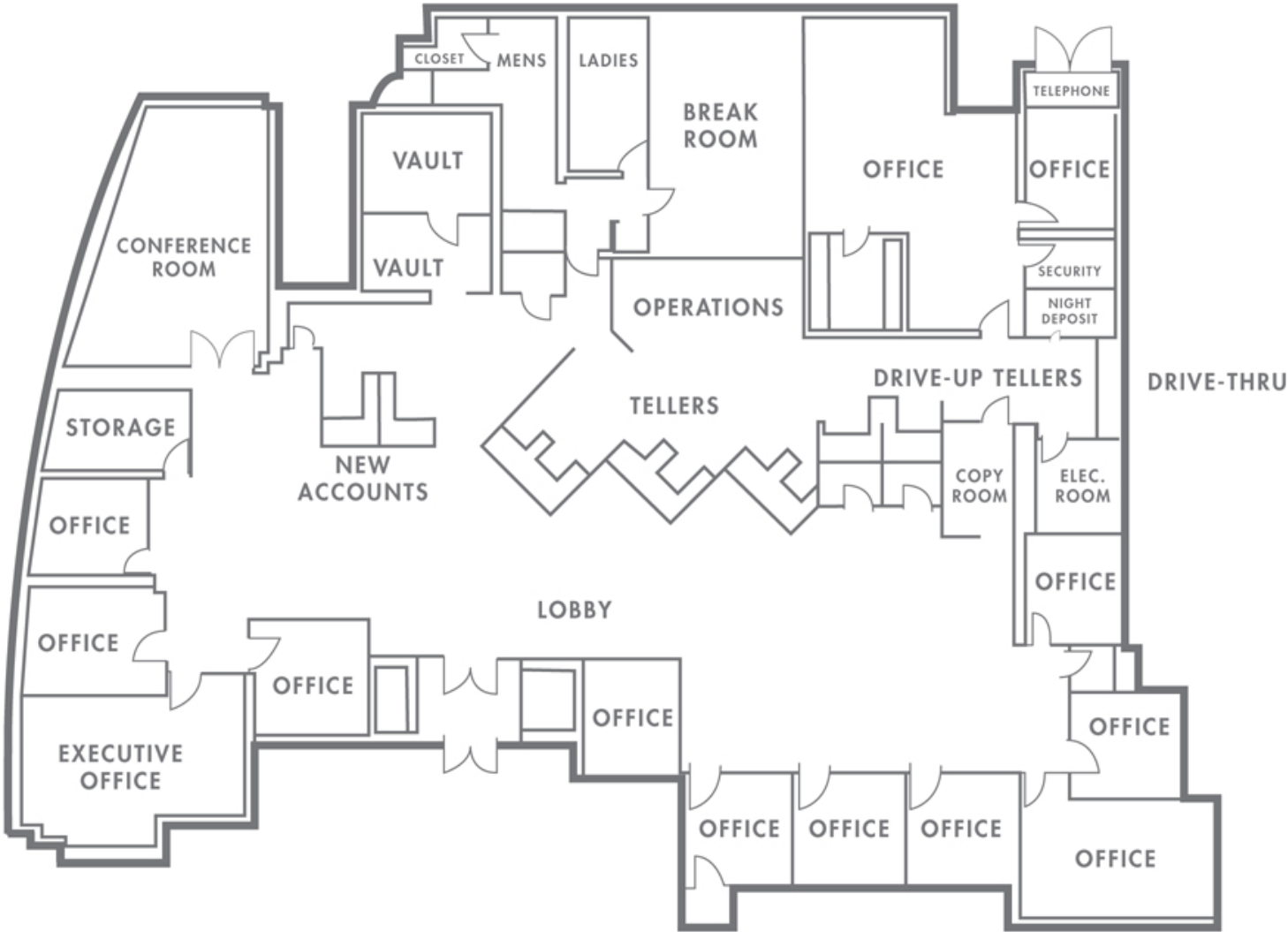
6385 S. Rainbow Blvd., Suite 100, Las Vegas, NV 89118
702.734.4500 Fax | 702.733.7690 Fax | Lic #01333376 | www.voitco.com

Voit
REAL ESTATE SERVICES

FOR SALE

FORMER BANK BRANCH

1400 South Rainbow Boulevard, Las Vegas, Nevada 89146



Jayne Cayton
Vice President
Lic #S.0043335
702.734.4506
jcayton@voitco.com

Matt Kreft
Senior Associate
Lic #S.0063422
702.734.4512
mkreft@voitco.com

6385 S. Rainbow Blvd., Suite 100, Las Vegas, NV 89118
702.734.4500 Fax | 702.733.7690 Fax | Lic #01333376 | www.voitco.com

Voit
REAL ESTATE SERVICES