

retail FOR LEASE

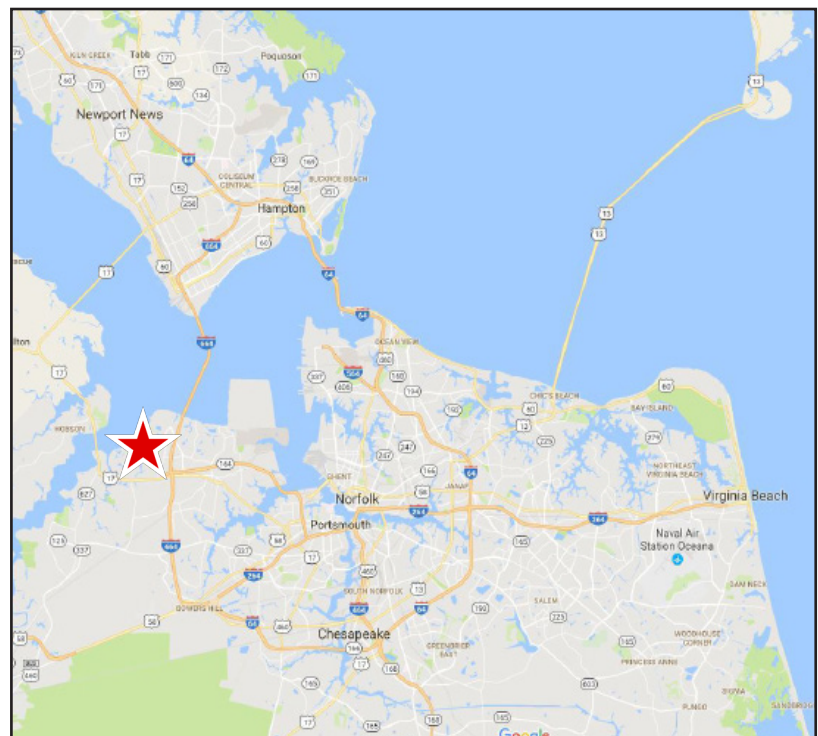


Harbour View Place (Phase I) | 2051 & 2099 Sun Harbour Avenue, Suffolk, Virginia

PROPERTY FEATURES:

- **1,400-5,000 RSF Available!**
- **±20,000 SF of Retail/Office/Medical center** to be developed at signalized intersection
- **Monument signage** with excellent visibility along Harbour View Blvd.
- **Adjacent to Bon Secours Health Center, Lidl Grocer** and 500+ luxury apartment units currently under construction
- **Conveniently located off of I-664**, just South of the Monitor Merrimac Memorial Bridge Tunnel

DEMOGRAPHICS	1 MILE	3 MILES	5 MILES
Est. Population	6,848	49,098	85,870
Avg HH Income	\$72,629	\$67,929	\$72,060
Households	2,445	17,907	31,970



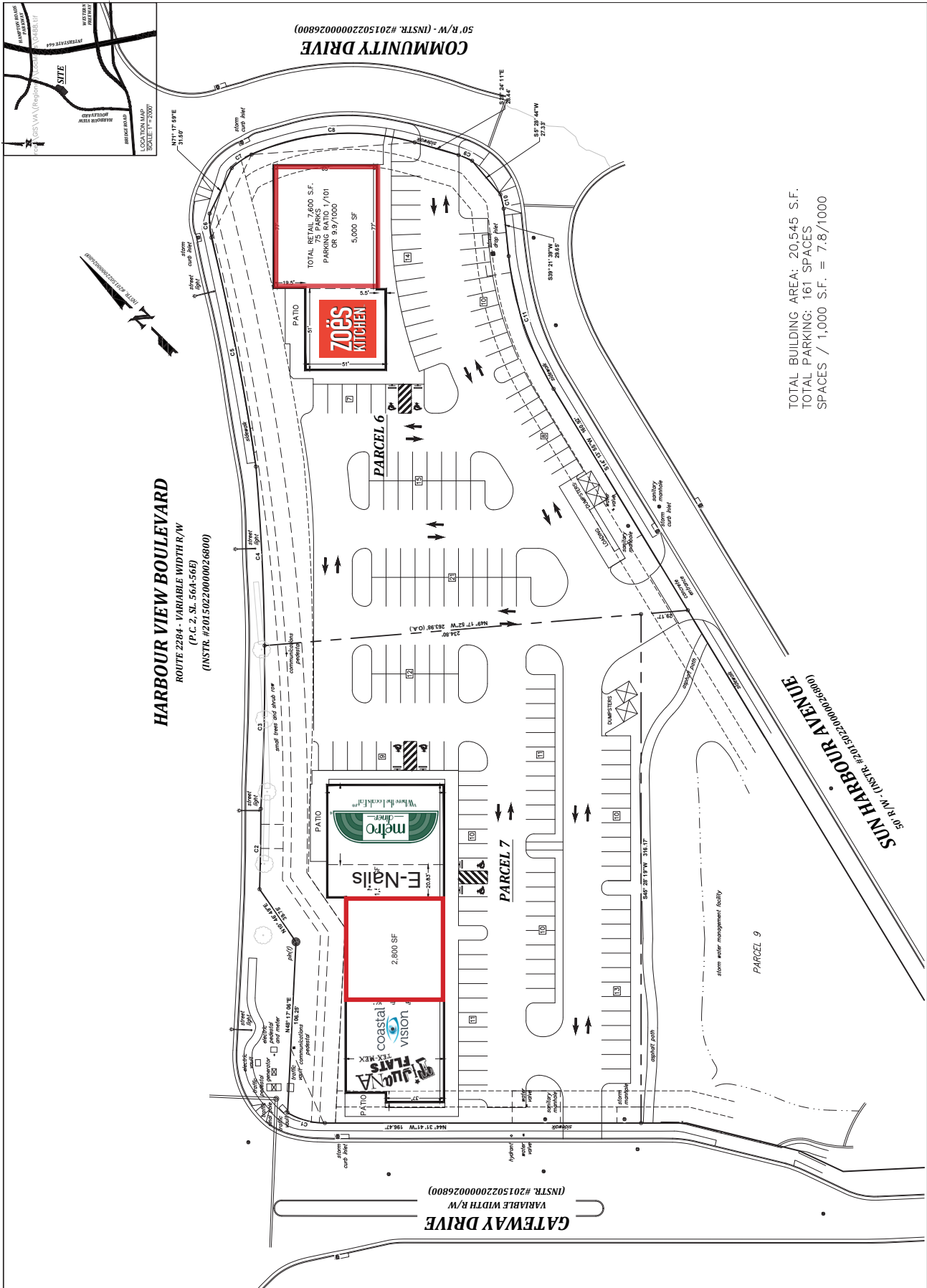
Troy Parker
o: 757.222.0111
m: 757.407.9499
troy@parkerburnell.com

Kristen Huber
o: 757.222.0111
m: 757.714.2341
kristen@parkerburnell.com

RENDERINGS



SITE PLAN





19,626 VPD



HARBOUR COMMONS

BON SECOURS
HEALTH CENTER

HARBOUR VIEW BLVD
PHASE 1



Future Site
276 Apartments



MERIDIAN HARBOURVIEW
APARTMENTS



TOWN POINT ROAD

54,743 VPD

