

# 3309

LA CIENEGA PL  
LOS ANGELES CA





# 3309

LA CIENEGA PL  
LOS ANGELES CA

## \_HIGHLIGHTS

▶ +/- **29,133 SF** creative office campus.

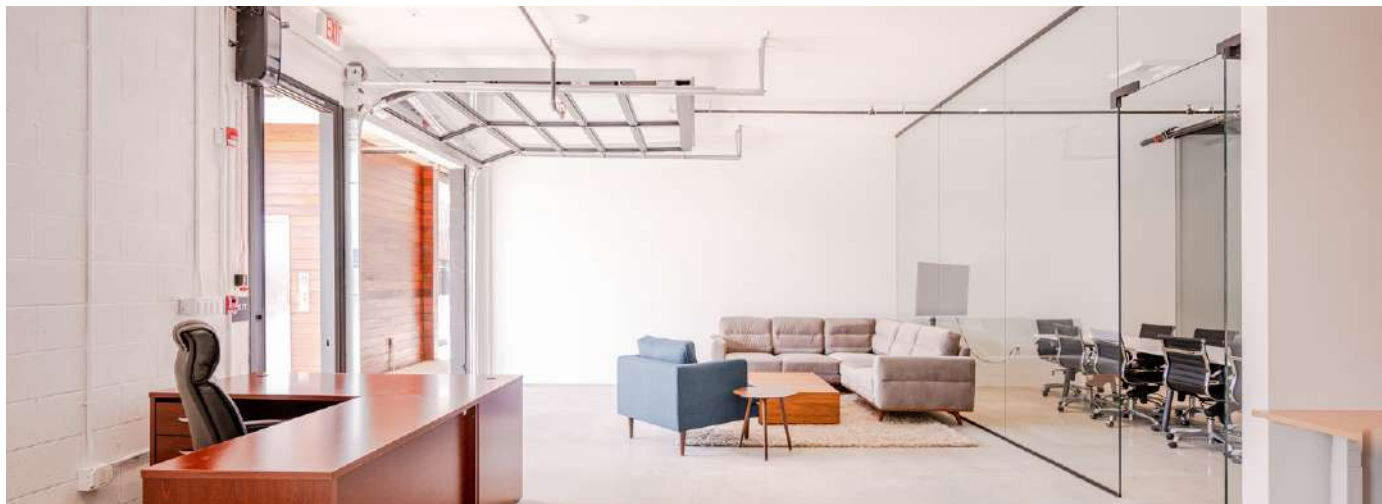
Loft Style **move in ready suites** contiguous for various suite sizes from 3,423 SF to 7,168 SF

▶ **Gated** 2/1,000 Parking onsite

▶ **Suites feature** glass roll up doors, full kitchens, glass conference rooms/offices, private restrooms and outdoor balconies. Furniture can be made available

▶ **Walkable + transit-oriented.** Between Culver City and West Adams, connecting the next gen of creatives and innovators to a new West LA lifestyle.

▶ **Walking distance** to the Culver City Hayden Tract, La Cienega/Jefferson Expo line station, directly adjacent to [cumulusdistrict.com](http://cumulusdistrict.com)



# 3309

LA CIENEGA PL  
LOS ANGELES CA

## \_FLOOR PLAN

**UNIT: 3309**  
**RSF: 3,423**

**UNIT: 3311**  
**RSF: 3,731**

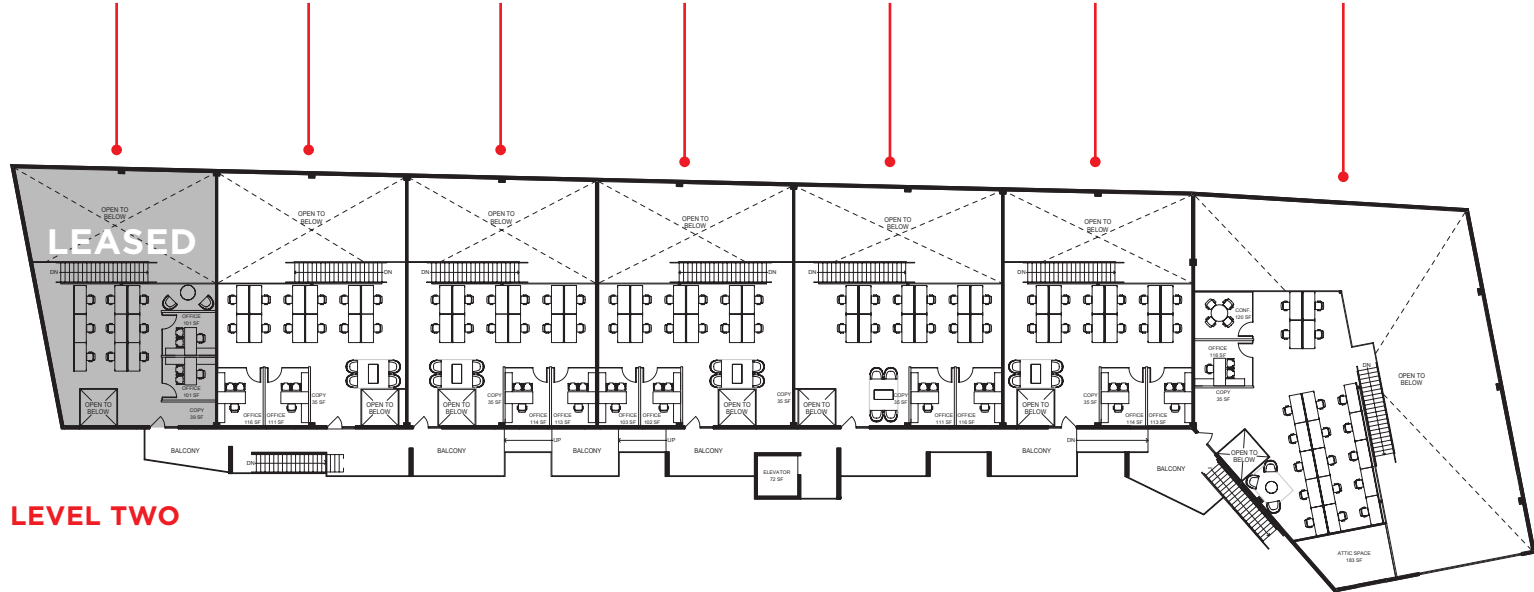
**UNIT: 3315**  
**RSF: 3,640**

**UNIT: 3317**  
**RSF: 3,683**

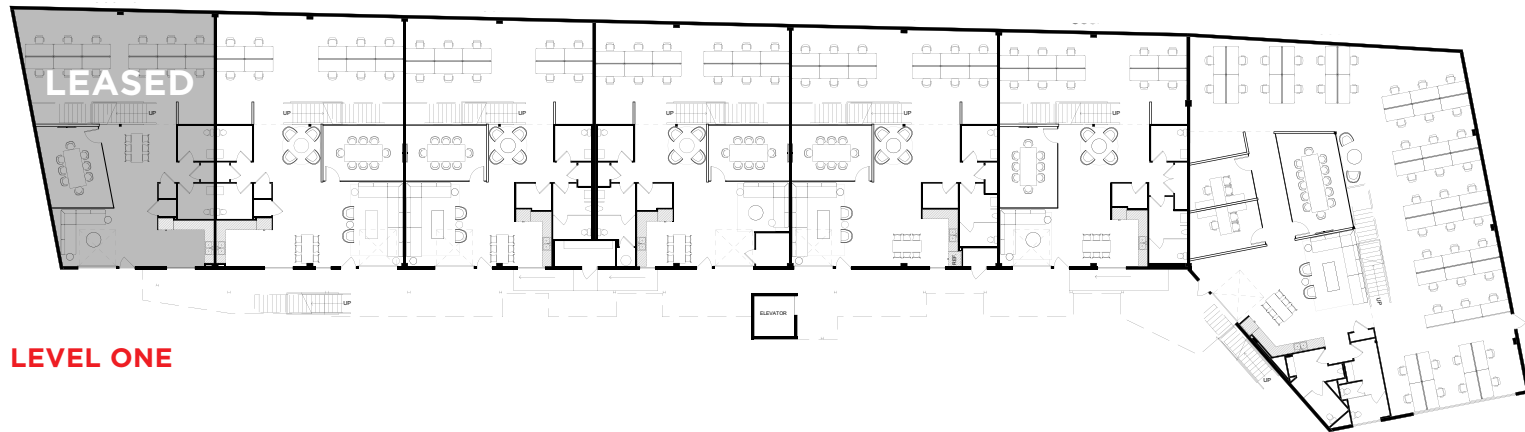
**UNIT: 3319**  
**RSF: 3,917**

**UNIT: 3321**  
**RSF: 3,571**

**UNIT: 3323**  
**RSF: 7,168**



**LEVEL TWO**



**LEVEL ONE**











# 3309

LA CIENEGA PL  
LOS ANGELES CA

## AREA AMENITIES



BALDWIN HILLS LOOK OUT

PLAYA VISTA

DOWNTOWN CULVER CITY

HAYDEN TRACT

WRAPPER TOWER

EXPO LINE

3309 LA CIENEGA PL



# 3309

LA CIENEGA PL  
LOS ANGELES CA

## \_AREA AMENITIES



DOWNTOWN LA

WEST ADAMS

LA CIENEGA/JEFFERSON  
EXPO LINE STATION

CUMULUS DISTRICT



3309 LA CIENEGA PL

LA CIENEGA BLVD

BALLONA CREEK BIKE PATH



# 3309

LA CIENEGA PL  
LOS ANGELES CA



**For More Information Contact:**

**JOSH BERNSTEIN** | +1 310 795 5947  
josh.bernstein@cushwake.com | Lic. #01828093

**SOPHIA HWANG** | +1 213 955 6450  
sophia.hwang@cushwake.com | Lic. #01828093



[View Site Specific COVID-19 Prevention Plan](#)

10250 Constellation Blvd., Suite 2200, Los Angeles, CA | +1 310 556 1805 | [cushmanwakefield.com](http://cushmanwakefield.com)

©2020 Cushman & Wakefield. All rights reserved. The information contained in this communication is strictly confidential. This information has been obtained from sources believed to be reliable but has not been verified. NO WARRANTY OR REPRESENTATION, EXPRESS OR IMPLIED, IS MADE AS TO THE CONDITION OF THE PROPERTY (OR PROPERTIES) REFERENCED HEREIN OR AS TO THE ACCURACY OR COMPLETENESS OF THE INFORMATION CONTAINED HEREIN, AND SAME IS SUBMITTED SUBJECT TO ERRORS, OMISSIONS, CHANGE OF PRICE, RENTAL OR OTHER CONDITIONS, WITHDRAWAL WITHOUT NOTICE, AND TO ANY SPECIAL LISTING CONDITIONS IMPOSED BY THE PROPERTY OWNER(S). ANY PROJECTIONS, OPINIONS OR ESTIMATES ARE SUBJECT TO UNCERTAINTY AND DO NOT SIGNIFY CURRENT OR FUTURE PROPERTY PERFORMANCE.