



FOR LEASE | OFFICE

HYDE BUILDING OFFICE CENTER

9305 W. National Ave., West Allis, WI 53227



LEASE OVERVIEW

AVAILABLE SF: 1,175 - 2,700SF

LEASE RATE: \$11.50 SF/Yr (Full Service)

LOT SIZE: 0.24 Acres

BUILDING SIZE: 6,938 SF

BUILDING CLASS: B

YEAR BUILT: 1988

PROPERTY DESCRIPTION

Ground level Unit available 1175 SF.
Second floor Unit available 1175-1525 SF.
18 Parking spaces in addition to street parking.



All SVN® Offices Independently Owned & Operated.
The information listed above has been obtained from sources we believe to be reliable, however, we accept no responsibility for its correctness.

ANTHONY STEVENS

Senior Advisor
262.478.0532
anthony.stevens@svn.com
WI #090-52382

JAY HINTZE

Managing Director
262.478.0532 X2
jay.hintze@svn.com
WI #55746-90

svn-hintzecommercialrealestate.com



9305 W. National Ave., West Allis, WI 53227



JAY HINTZE

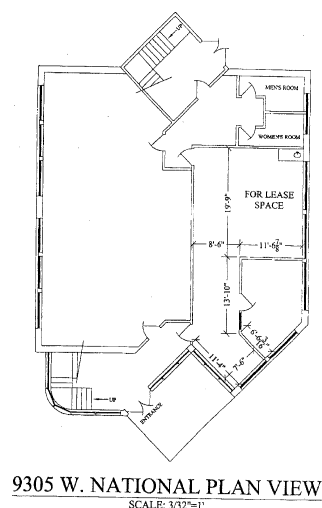
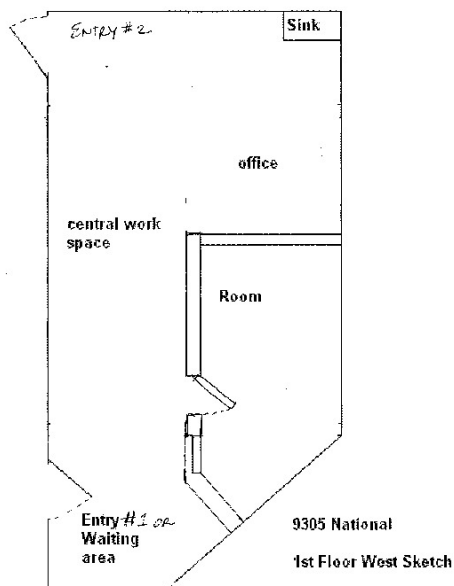
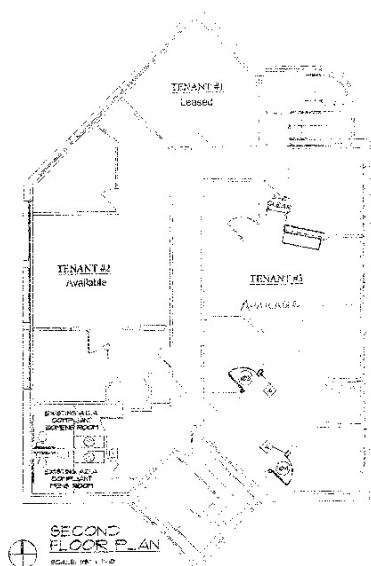
All SVN® Offices Independently Owned & Operated. WI #090-52382 WI #55746-90
The information listed above has been obtained from sources we believe to be reliable, however, we accept no responsibility for its correctness.



FOR LEASE | OFFICE

HYDE BUILDING OFFICE CENTER

9305 W. National Ave., West Allis, WI 53227



ANTHONY STEVENS

Senior Advisor
262.478.0532
anthony.stevens@svn.com
WI #090-52382

JAY HINTZE

Managing Director
262.478.0532 X2
jay.hintze@svn.com
WI #55746-90

All SVN® Offices Independently Owned & Operated.
The information listed above has been obtained from sources we believe to be reliable, however, we accept no responsibility for its correctness.

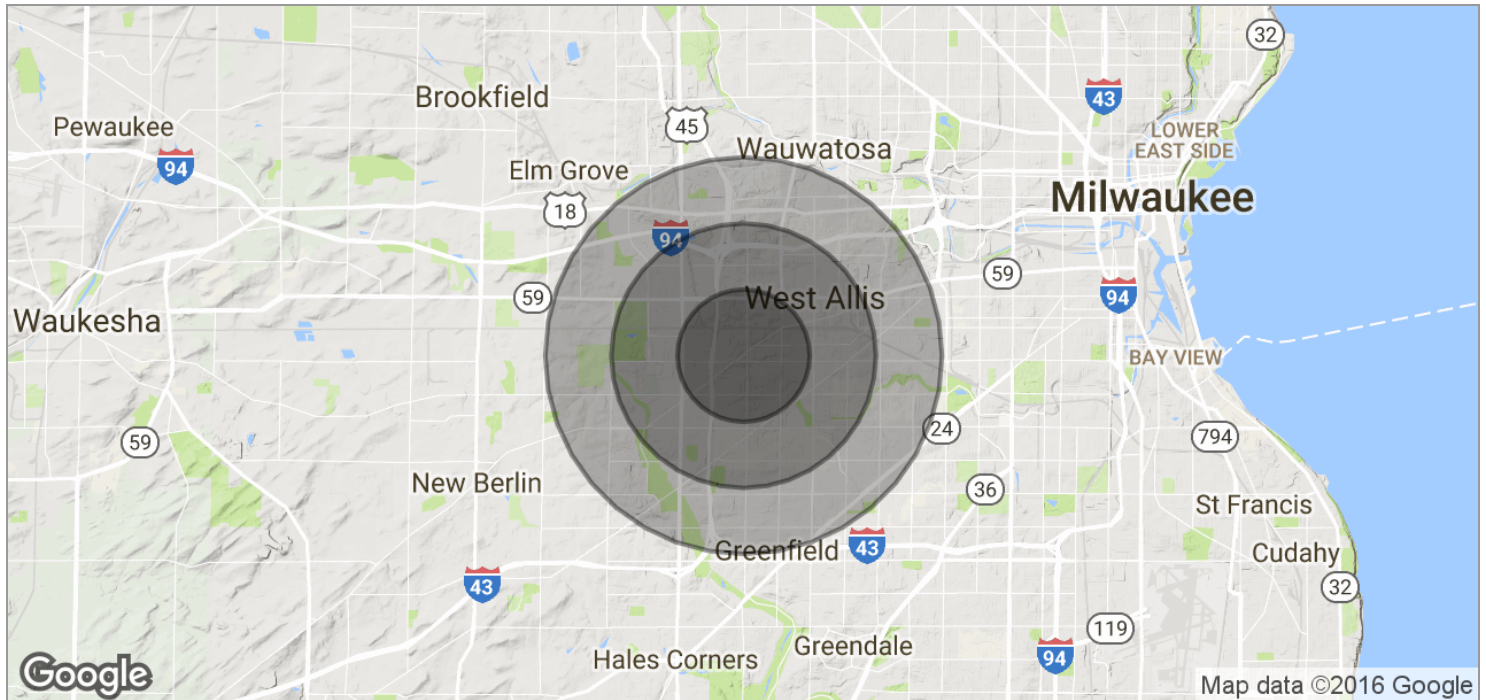
svn-hintzecommercialrealestate.com



FOR LEASE | OFFICE

HYDE BUILDING OFFICE CENTER

9305 W. National Ave., West Allis, WI 53227



POPULATION

	1 MILE	2 MILES	3 MILES
TOTAL POPULATION	19,145	67,221	135,782
MEDIAN AGE	40.8	39.6	39.1
MEDIAN AGE (MALE)	38.3	37.6	37.4
MEDIAN AGE (FEMALE)	42.2	41.2	41.0

HOUSEHOLDS & INCOME

	1 MILE	2 MILES	3 MILES
TOTAL HOUSEHOLDS	8,937	30,680	61,175
# OF PERSONS PER HH	2.1	2.2	2.2
AVERAGE HH INCOME	\$52,023	\$54,122	\$57,038
AVERAGE HOUSE VALUE	\$170,847	\$174,456	\$192,409



ANTHONY STEVENS

Senior Advisor
262.478.0532
anthony.stevens@svn.com
WI #090-52382

JAY HINTZE

Managing Director
262.478.0532 X2
jay.hintze@svn.com
WI #55746-90

All SVN® Offices Independently Owned & Operated.
The information listed above has been obtained from sources we believe to be reliable, however, we accept no responsibility for its correctness.

svn-hintzecommercialrealestate.com