



FORD POINT

1414 HARBOUR WAY SOUTH, RICHMOND MARINA, CA 94804

±41,089 RSF EXPANDABLE TO ±160,000 RSF
CREATIVE ADMINISTRATIVE OFFICE/R&D SPACE

WATER FERRY TERMINAL OPENING IN Q1 2019!



HOME

HIGHLIGHTS

AVAILABLE

AMENITIES

LOCATION

For more information, please contact:

Ryan Hattersley
Executive Managing Director
+1 510 891 5802
ryan.hattersley@cushwake.com
LIC #01354553

Ted J. Anderson
Managing Director
+1 510 891 5833
ted.anderson@cushwake.com
LIC # 00132000

Andrew Schmieder
Director
+1 510 891 5834
andrew.schmieder@cushwake.com
LIC # 01828740

CUSHMAN & WAKEFIELD
cushmanwakefield.com

©2018 Cushman & Wakefield. All rights reserved. The information contained in this communication is strictly confidential. This information has been obtained from sources believed to be reliable but has not been verified. NO WARRANTY OR REPRESENTATION, EXPRESS OR IMPLIED, IS MADE AS TO THE CONDITION OF THE PROPERTY (OR PROPERTIES) REFERENCED HEREIN OR AS TO THE ACCURACY OR COMPLETENESS OF THE INFORMATION CONTAINED HEREIN, AND SAME IS SUBMITTED SUBJECT TO ERRORS, OMISSIONS, CHANGE OF PRICE, RENTAL OR OTHER CONDITIONS, WITHDRAWAL WITHOUT NOTICE, AND TO ANY SPECIAL LISTING CONDITIONS IMPOSED BY THE PROPERTY OWNER(S). ANY PROJECTIONS, OPINIONS OR ESTIMATES ARE SUBJECT TO UNCERTAINTY AND DO NOT SIGNIFY CURRENT OR FUTURE PROPERTY PERFORMANCE.



Property Highlights

- Spectacular creative space
- High ceilings
- San Francisco Bay waterfront views of the City of San Francisco and Oakland
- Elevator accessible
- Upgraded high-efficiency LED lighting
- Abundant natural light from sawtooth roof
- Sprinklered
- Exclusive restroom core in place
- Green building/retrofitted
- On-site building maintenance

“ Ford Point offers our East Bay SunPower employees a great work environment inside and out. From its uniquely designed building with bright and airy workspace to its rich history, breathtaking views and access to public transportation, Ford Point is ideal. ”

-Howard Wenger, SunPower



For more information, please contact:

Ryan Hattersley
Executive Managing Director
+1 510 891 5802
ryan.hattersley@cushwake.com
LIC #01354553

Ted J. Anderson
Managing Director
+1 510 891 5833
ted.anderson@cushwake.com
LIC # 001332000

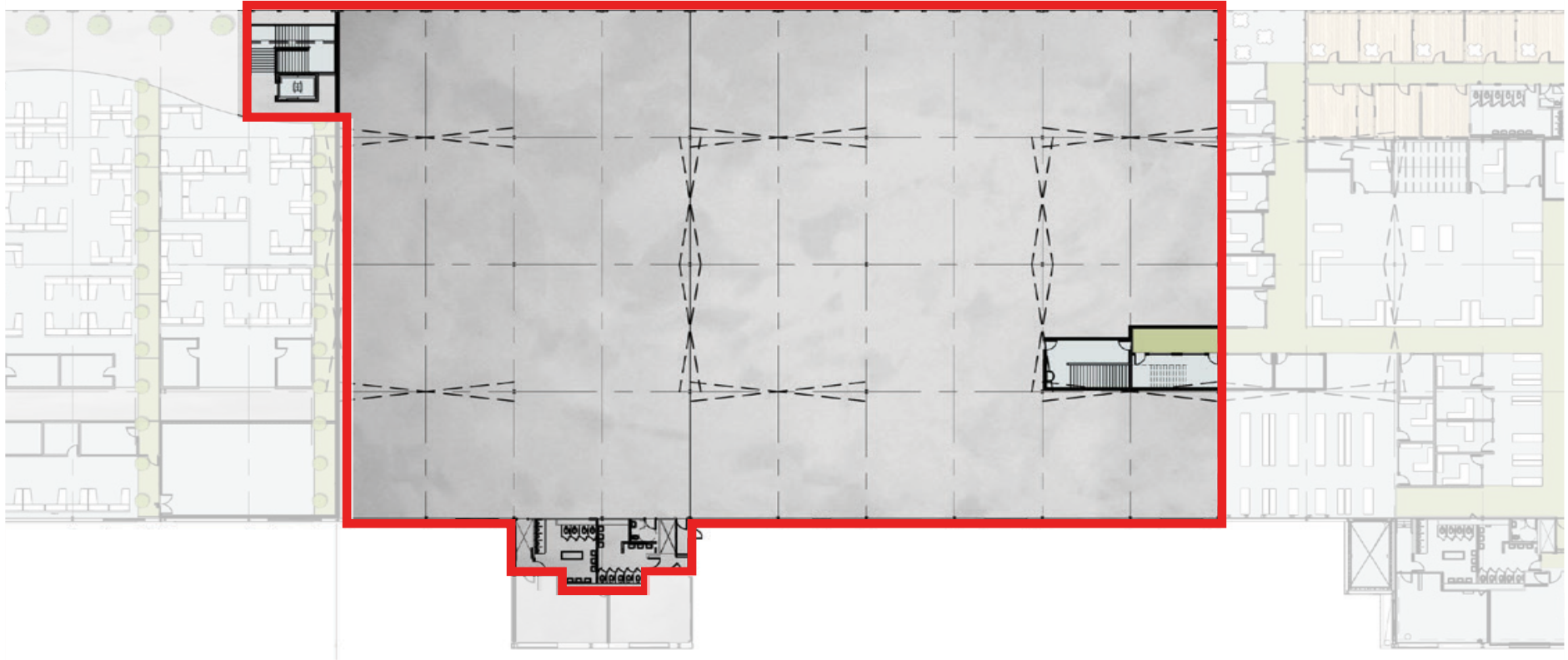
Andrew Schmieder
Director
+1 510 891 5834
andrew.schmieder@cushwake.com
LIC # 01828740



cushmanwakefield.com



±41,089 RSF EXPANDABLE TO ±160,000 RSF ADMINISTRATIVE OFFICE/R&D SPACE DELIVERABLE



For more information, please contact:

Ryan Hattersley
Executive Managing Director
+1 510 891 5802
ryan.hattersley@cushwake.com
LIC #01354553

Ted J. Anderson
Managing Director
+1 510 891 5833
ted.anderson@cushwake.com
LIC # 001332000

Andrew Schmieder
Director
+1 510 891 5834
andrew.schmieder@cushwake.com
LIC # 01828740

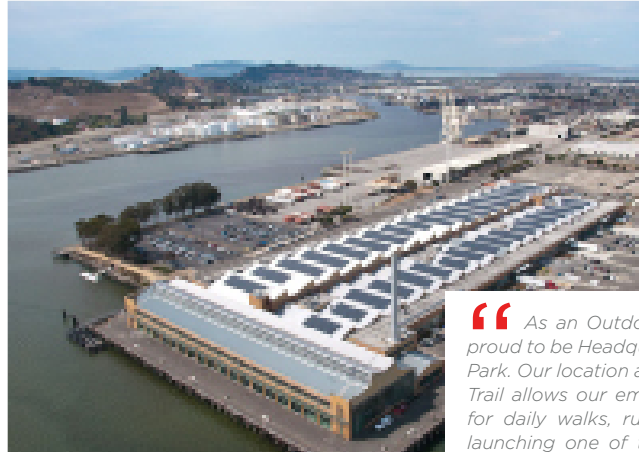


cushmanwakefield.com



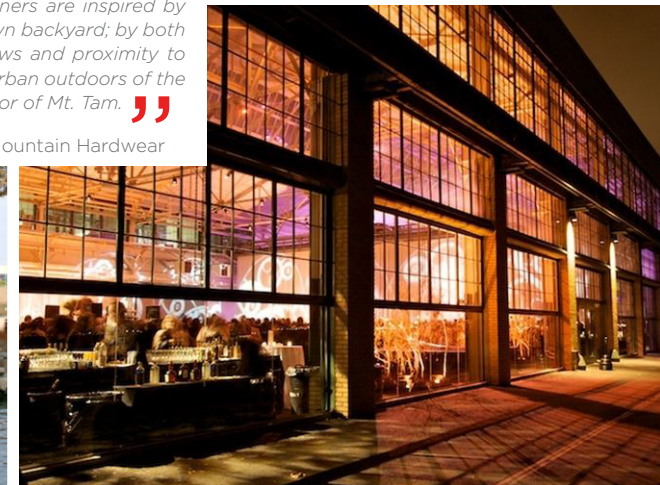
Amenities

- Historic Ford Assembly Plant
- National Register of Historical Places designation
- NPS Visitor Center- Rosie the Riveter
- Complete shell remodel, including all seismic and windows
- Dedicated BART shuttle
- Public transit
- New Richmond Ferry Terminal next to building to open in Q1 2019
- Abundant free parking
- Future 50 + electric car charging stations
- 24 hour security
- Assemble Restaurant - On-Site www.assemblerestaurant.com
- Craneway Pavilion Event Center - On-Site www.craneway.com
- Located directly on the Bay Trail



“ As an Outdoor Company we are proud to be Headquartered in a National Park. Our location at the base of the Bay Trail allows our employees easy access for daily walks, runs, biking and even launching one of the company kayaks or SUPs. Our designers are inspired by the nature in our own backyard; by both the spectacular views and proximity to waters of the bay, urban outdoors of the city, and the splendor of Mt. Tam. ”

-Roberta, Mountain Hardwear



For more information, please contact:

Ryan Hattersley
 Executive Managing Director
 +1 510 891 5802
ryan.hattersley@cushwake.com
 LIC #01354553

Ted J. Anderson
 Managing Director
 +1 510 891 5833
ted.anderson@cushwake.com
 LIC # 001332000

Andrew Schmieder
 Director
 +1 510 891 5834
andrew.schmieder@cushwake.com
 LIC # 01828740



cushmanwakefield.com



FORD POINT

1414 HARBOUR WAY SOUTH, RICHMOND MARINA, CA 94804

HOME

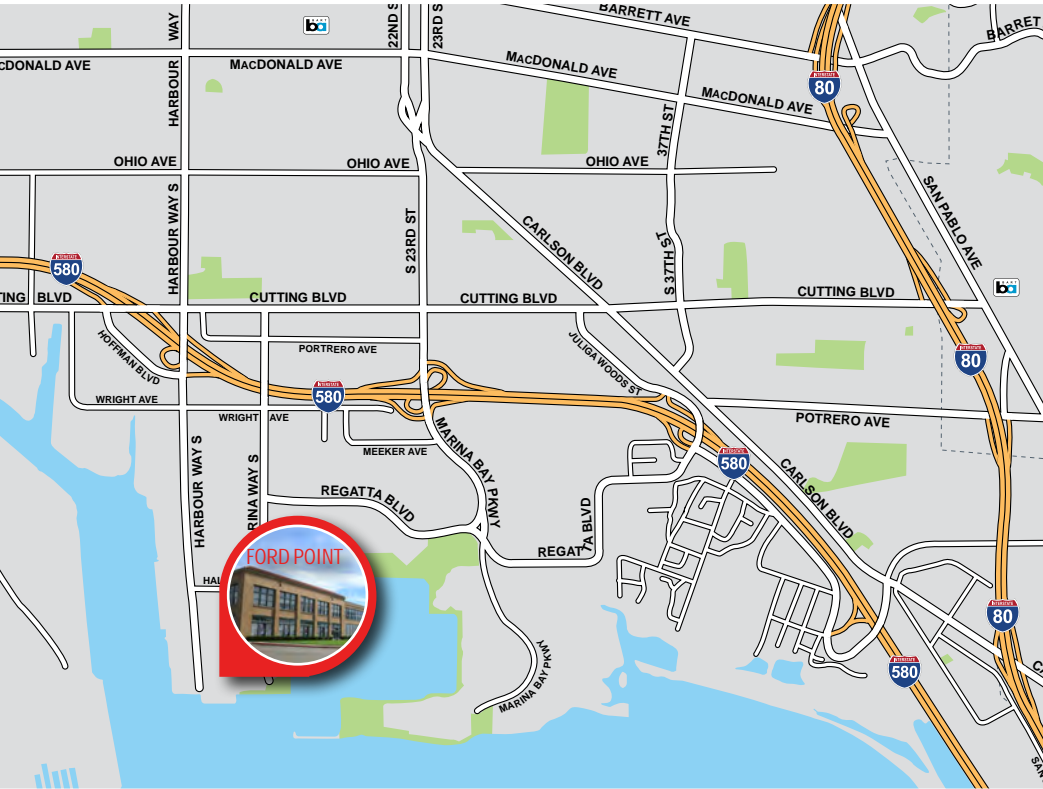
HIGHLIGHTS

AVAILABLE

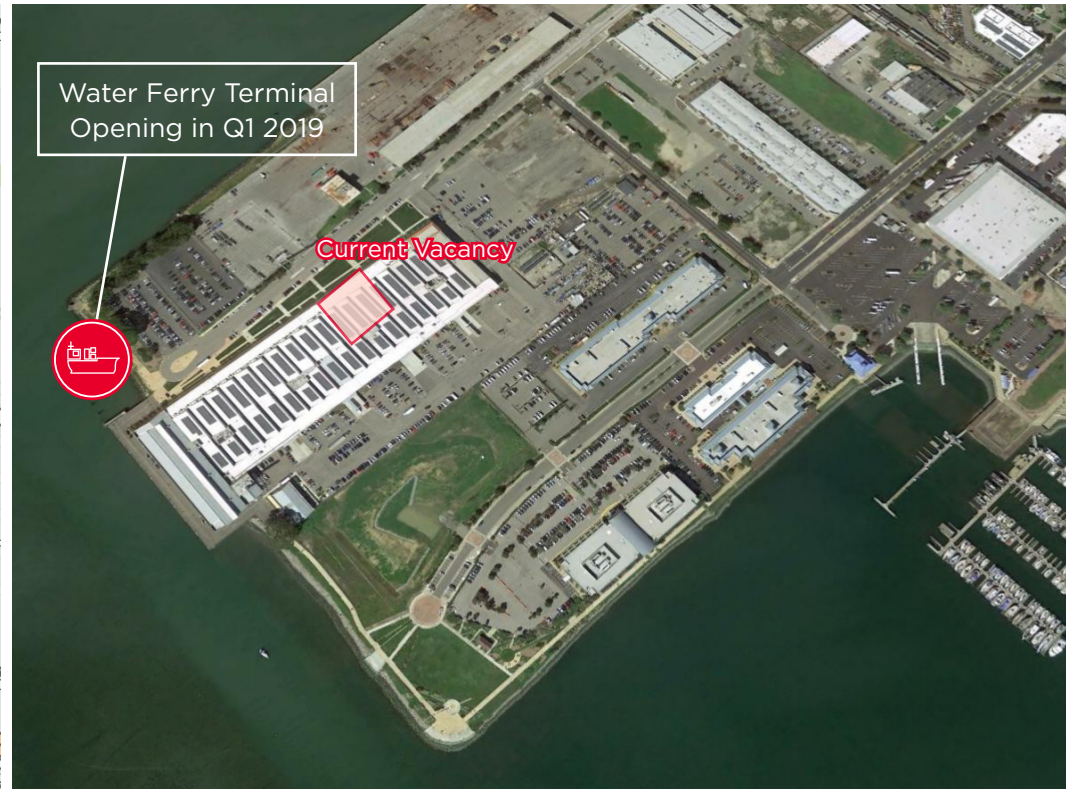
AMENITIES

LOCATION

Location



Area Map



Aerial

For more information, please contact:

Ryan Hattersley
Executive Managing Director
+1 510 891 5802
ryan.hattersley@cushwake.com
LIC #01354553

Ted J. Anderson
Managing Director
+1 510 891 5833
ted.anderson@cushwake.com
LIC # 001332000

Andrew Schmieder
Director
+1 510 891 5834
andrew.schmieder@cushwake.com
LIC # 01828740



cushmanwakefield.com