

RETAIL/OFFICE FOR LEASE

MORNINGSIDE APARTMENTS

9425 35th Ave NE, Suite D, Seattle, WA 98115

AVAILABLE
NOW



For more information please contact:

LAURA MILLER

laura@gibraltarusa.com

206.351.3573



9425 35TH AVE NE, SUITE D, SEATTLE, WA 98115

MORNINGSIDE APARTMENTS



NEIGHBORHOOD

Wedged between Northeast Seattle and Meadowbrook, the Wedgewood neighborhood offers undeniable charm, and array of cafes, shops, restaurants, and service oriented stores among lush greenery on 35th Avenue Northeast, Wedgewood's main commercial thoroughfare. Close proximity to Children's Hospital, Magnuson Park, Sand Point, and Lake City area.

PROPERTY HIGHLIGHTS

- Rare opportunity to lease retail/office space in North Seattle's Wedgewood neighborhood
- Located at the base of Morningside Apartments, a mixed use building comprised of 26 residential units, and 5 street-level commercial spaces
- Newly renovated space features polished concrete floors, fresh white interior paint, and repainted Building exterior
- Kitchenette, common area shared restrooms, and HVAC
- FREE onsite parking: 2 covered and 2 uncovered stalls included in Lease, plus 4 shared guest/customer stalls
- 1,433 SF
- Rental Rate \$17.50/SF plus NNN (approx. \$7.12/SF) = \$2,940 per month



83,297

TOTAL POPULATION



35,969

TOTAL HOUSEHOLDS



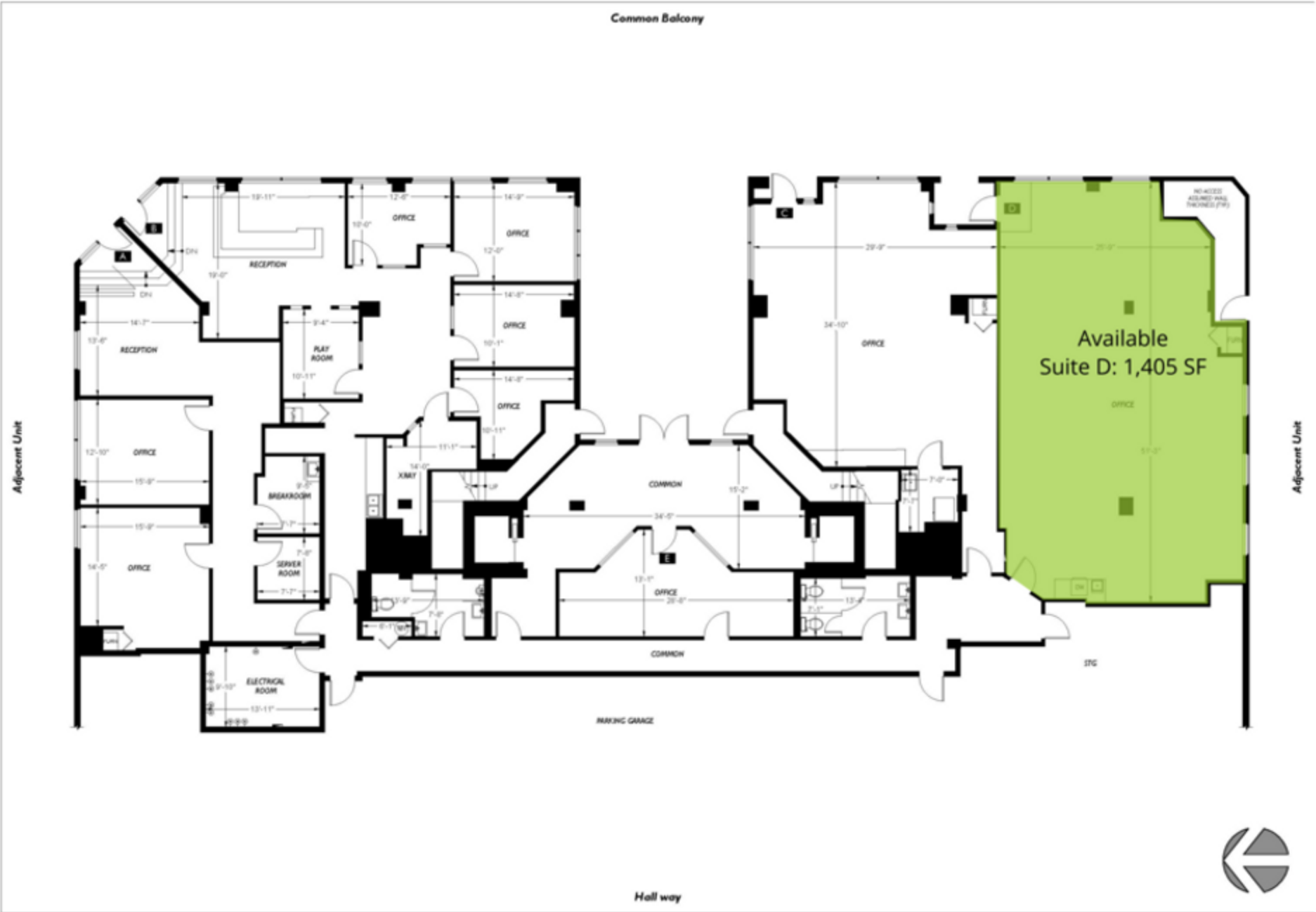
\$103,348

MEDIAN INCOME

* Estimated 2020 Demographics based on 2 mile radius

9425 35TH AVE NE, SUITE D, SEATTLE, WA 98115

MORNINGSIDE APARTMENTS



9425 35TH AVE NE, SUITE D, SEATTLE, WA 98115

MORNINGSIDE APARTMENTS

