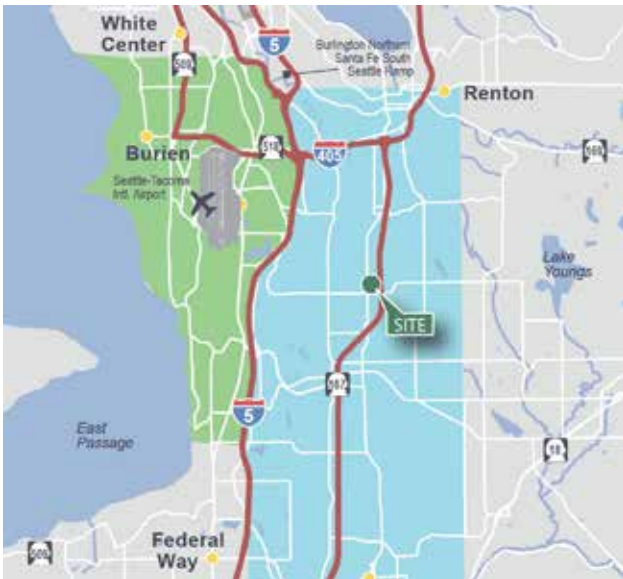


# Northwest Corporate Park - Kent

20003 - 20013 85th Avenue S

Kent, WA

**54,000 SF Total with 4,592 SF Office For Lease**



## location

- 50 yard line location
- Great access to Hwy-167, I-5 and I-405

## facility

- 54,000 SF shell
- 4,592 SF office
- 12 DH doors and 2 GL doors
- 24' clear height
- 60' x 25' typical column spacing
- 14,000 SF fenced and secured yard
- End cap space

### Kidder Mathews

Matt Wood, SIOR  
mwood@kiddermathews.com  
ph 206.248.7306  
fax 206.248.7342  
12886 Interurban Ave S  
Seattle, WA 98168

### Kidder Mathews

Thad Mallory, SIOR  
tmallory@kiddermathews.com  
ph 206.248.7338  
fax 206.248.7342  
12886 Interurban Ave S  
Seattle, WA 98168

### Kidder Mathews

Tony Miltenberger, SIOR  
tonym@kiddermathews.com  
ph 206.248.7307  
fax 206.248.7342  
12886 Interurban Ave S  
Seattle, WA 98168

### Prologis

Rick Kolpa  
rkolpa@prologis.com  
ph 206.414.7610  
fax 206.414.7601  
12720 Gateway Dr, Ste 110  
Tukwila, WA 98168

# Northwest Corporate Park - Kent

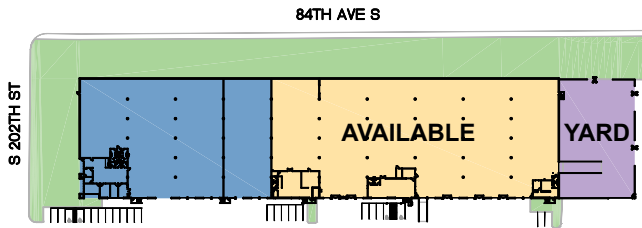
20003 - 20013 85th Avenue S

Kent, WA



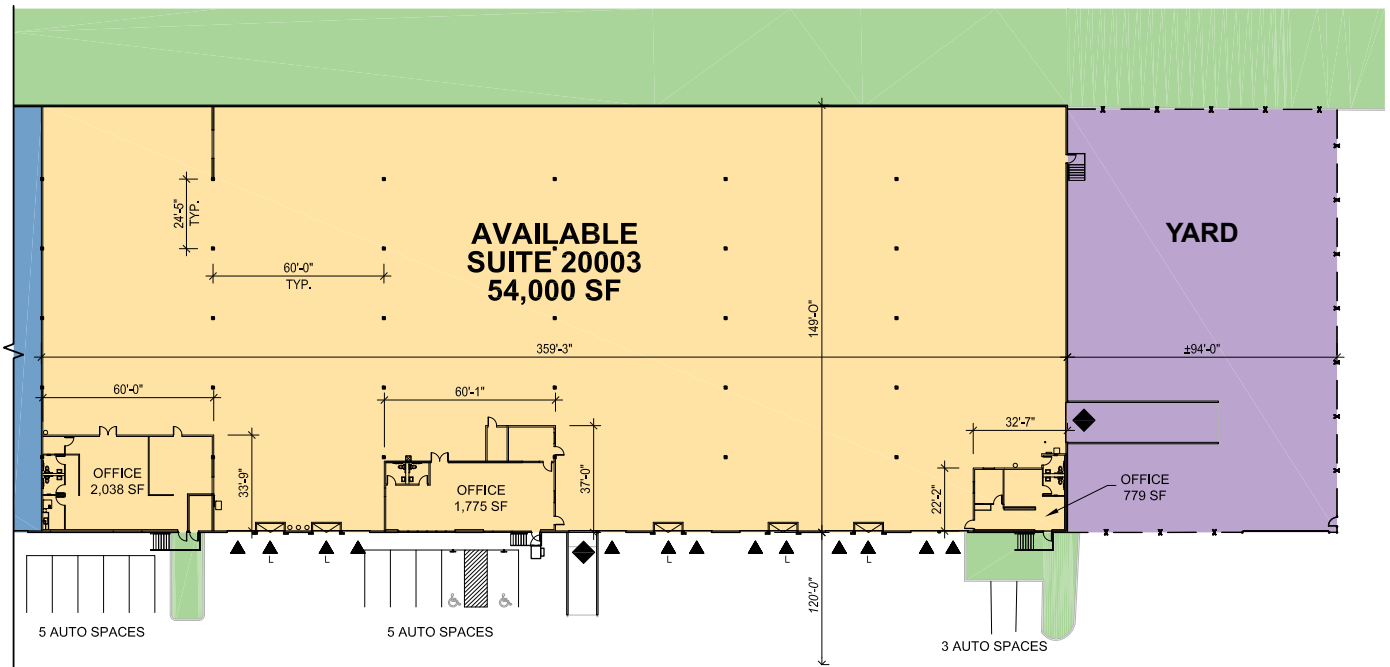
**PROLOGIS**

**54,000 SF Total with 4,592 SF Office For Lease**



**BUILDING B  
OVERALL PLAN**

NTS



**Kidder Mathews**  
Matt Wood, SIOR  
mwood@kiddermathews.com  
ph 206.248.7306  
fax 206.248.7342  
12886 Interurban Ave S  
Seattle, WA 98168

**Kidder Mathews**  
Thad Mallory, SIOR  
tmallory@kiddermathews.com  
ph 206.248.7338  
fax 206.248.7342  
12886 Interurban Ave S  
Seattle, WA 98168

**Kidder Mathews**  
Tony Miltenberger, SIOR  
tonym@kiddermathews.com  
ph 206.248.7307  
fax 206.248.7342  
12886 Interurban Ave S  
Seattle, WA 98168

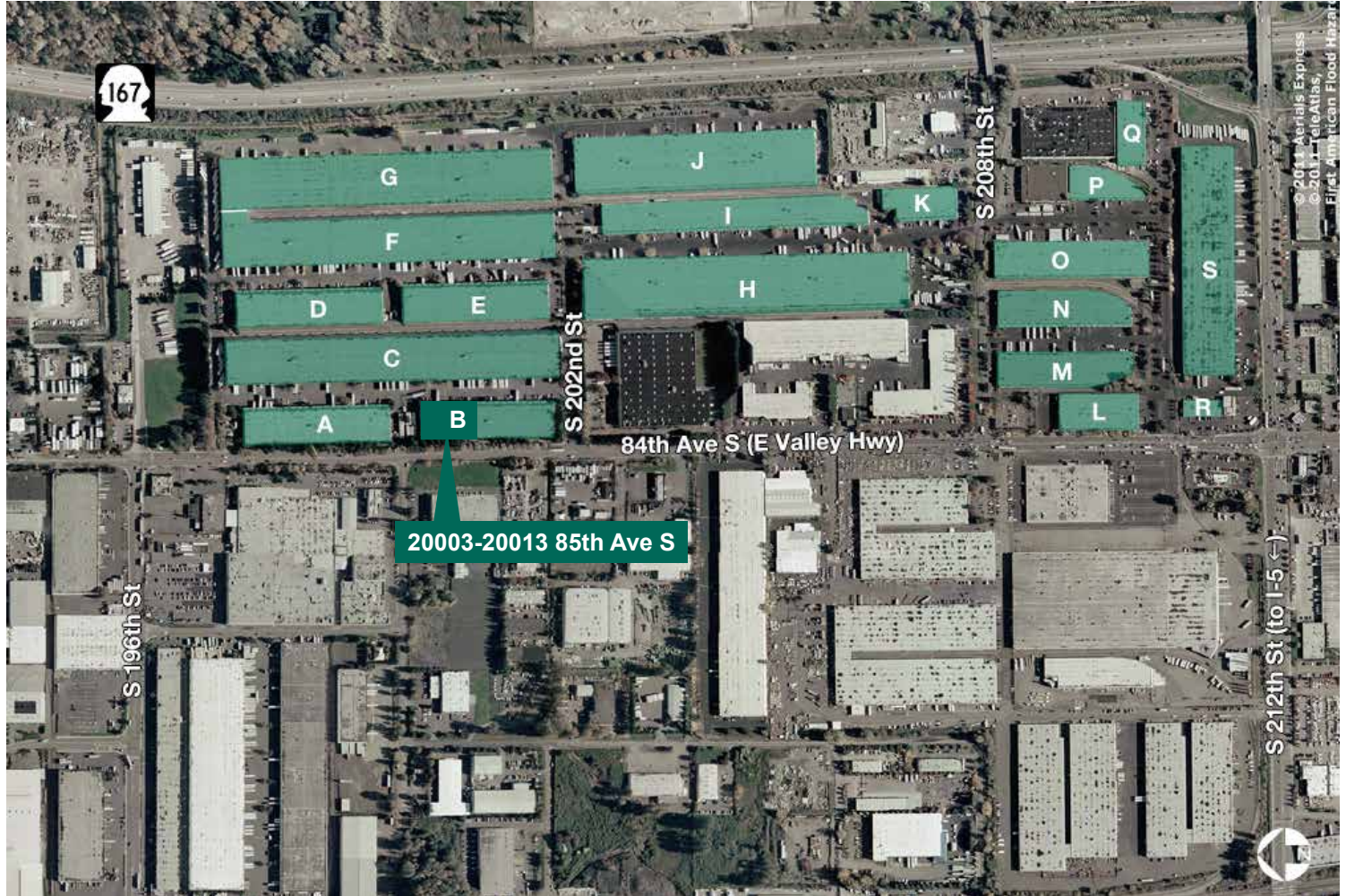
**Prologis**  
Rick Kolpa  
rkolpa@prologis.com  
ph 206.414.7610  
fax 206.414.7601  
12720 Gateway Dr, Ste 110  
Tukwila, WA 98168

# Northwest Corporate Park - Kent

20003 - 20013 85th Avenue S

Kent, WA

54,000 SF Total with 4,592 SF Office For Lease



**Kidder Mathews**  
Matt Wood, SIOR  
mwood@kiddermathews.com  
ph 206.248.7306  
fax 206.248.7342  
12886 Interurban Ave S  
Seattle, WA 98168

**Kidder Mathews**  
Thad Mallory, SIOR  
tmallory@kiddermathews.com  
ph 206.248.7338  
fax 206.248.7342  
12886 Interurban Ave S  
Seattle, WA 98168

**Kidder Mathews**  
Tony Miltenberger, SIOR  
tonym@kiddermathews.com  
ph 206.248.7307  
fax 206.248.7342  
12886 Interurban Ave S  
Seattle, WA 98168

**Prologis**  
Rick Kolpa  
rkolpa@prologis.com  
ph 206.414.7610  
fax 206.414.7601  
12720 Gateway Dr, Ste 110  
Tukwila, WA 98168