

Retail/Restaurant/Medical Office Opportunity

Santa Ana Depot

923 SANTIAGO ST, SANTA ANA, CA



CHRIS HODGMAN

949.284.0223
chodgman@retailinsite.net

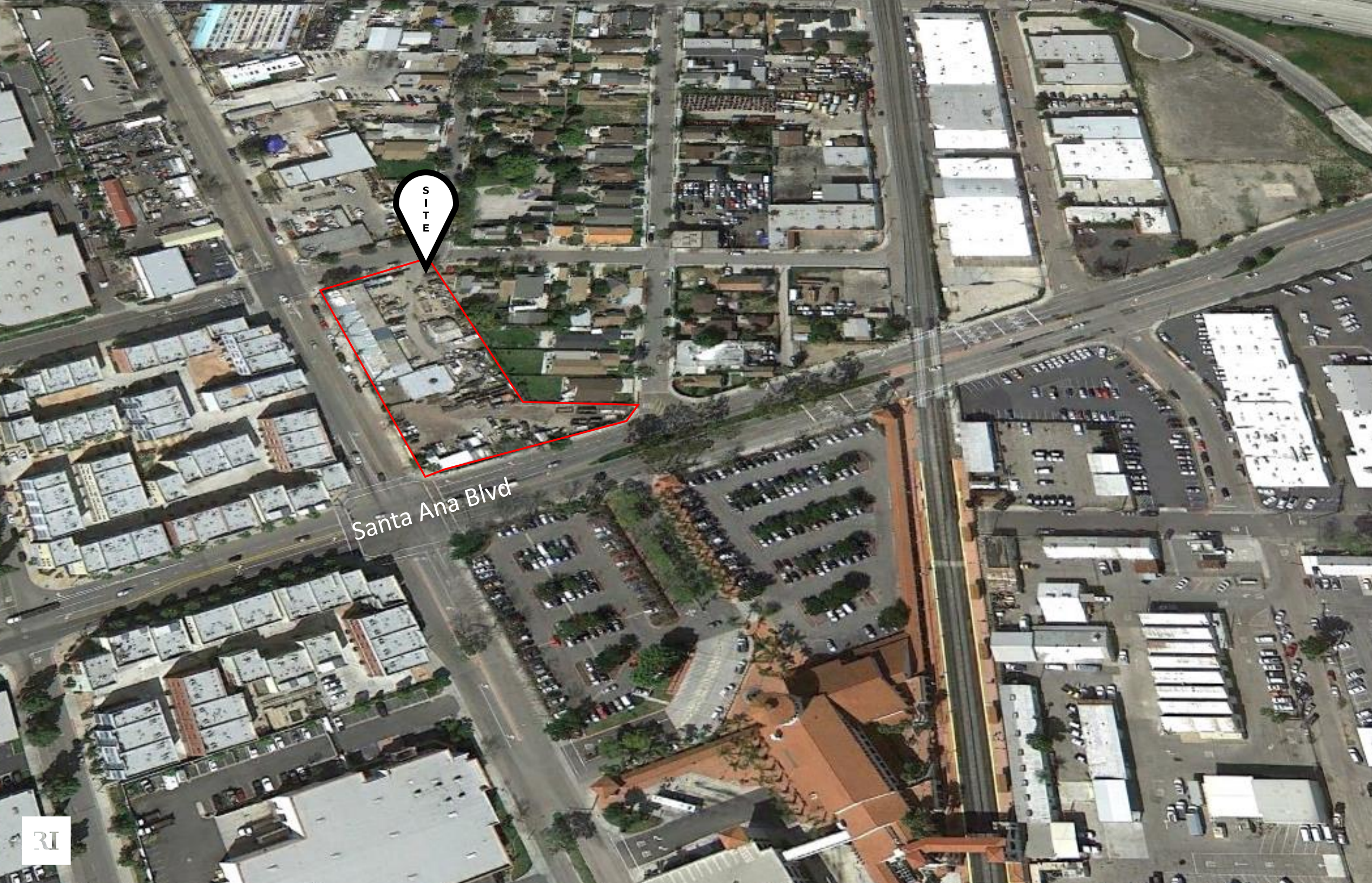
MATT MOSER

858.523.2096
mmoser@retailinsite.net

CONNOR STEVENS

858.369.6458
cstevens@retailinsite.net

RI



923 N SANTIAGO STREET

Property Highlights

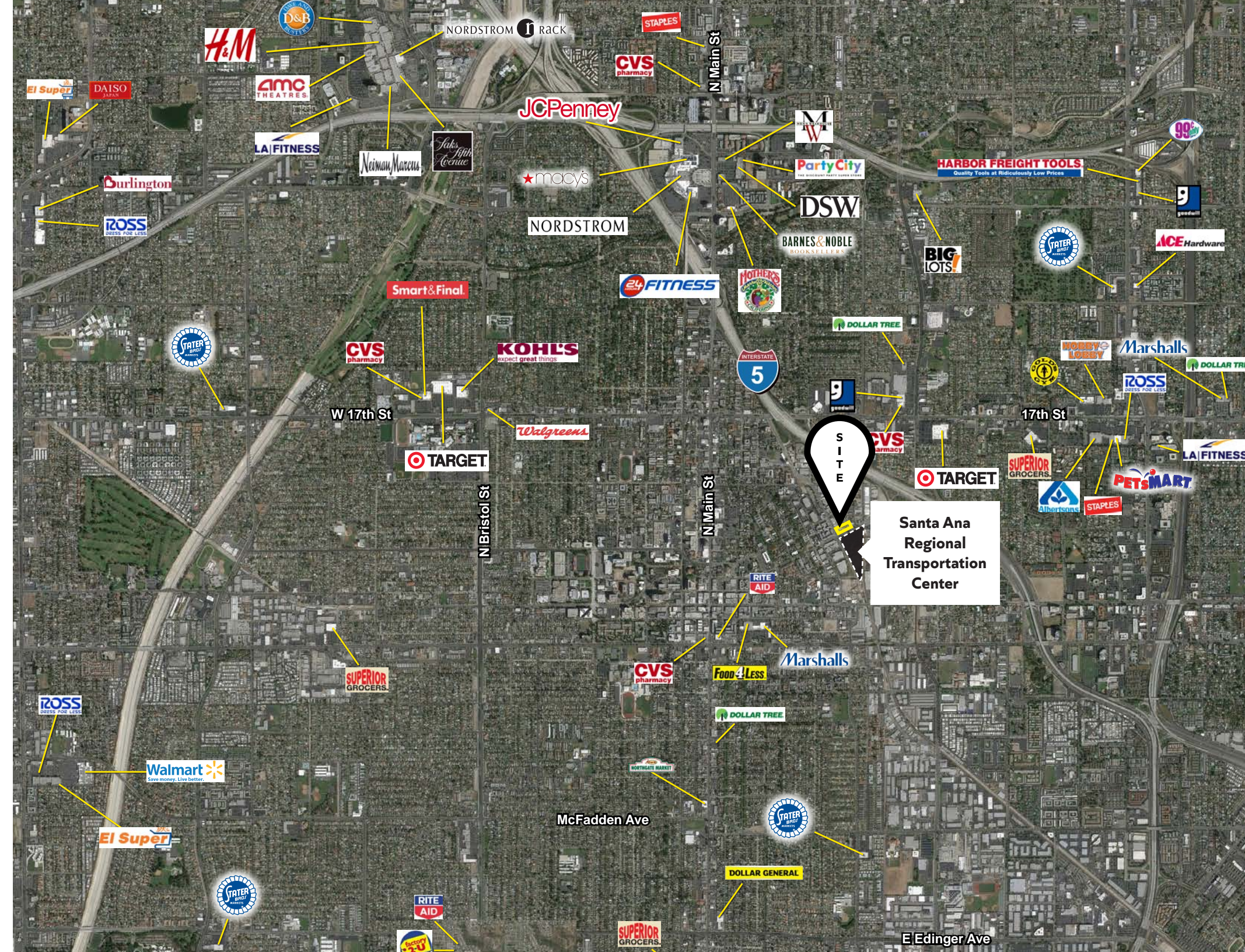
- New mixed-use retail project located in Santa Ana
 - 9,223 SF retail/restaurant space available
 - Great visibility to Santa Ana Blvd
- Directly adjacent to Santa Ana Regional Transportation Center
 - On-site parking (31 spaces)
 - Freeway-accessible to I-5
- Good proximity to Downtown Santa Ana
 - Frontage to OC Streetcar

OC Streetcar will increase transportation options and provide greater access along its 4.15-mile route between downtown Santa Ana and Garden Grove. Less traffic congestion and parking hassles means locals and visitors can easily access everything this vibrant community has to offer.

**923
N SANTIAGO
STREET**

Santa Ana Demographics

	1 mi	3 mi	5 mi
Population	46,702	331,918	697,658
Projected Population (2022)	47,832	339,291	720,299
Average Household Income	\$59,109	\$81,928	\$96,803
Median Household Income	\$44,586	\$61,494	\$72,537
Average Age	27.7	30.8	32.7
Total Daytime Population	53,057	335,263	784,008
Total Households	11,080	80,342	186,785



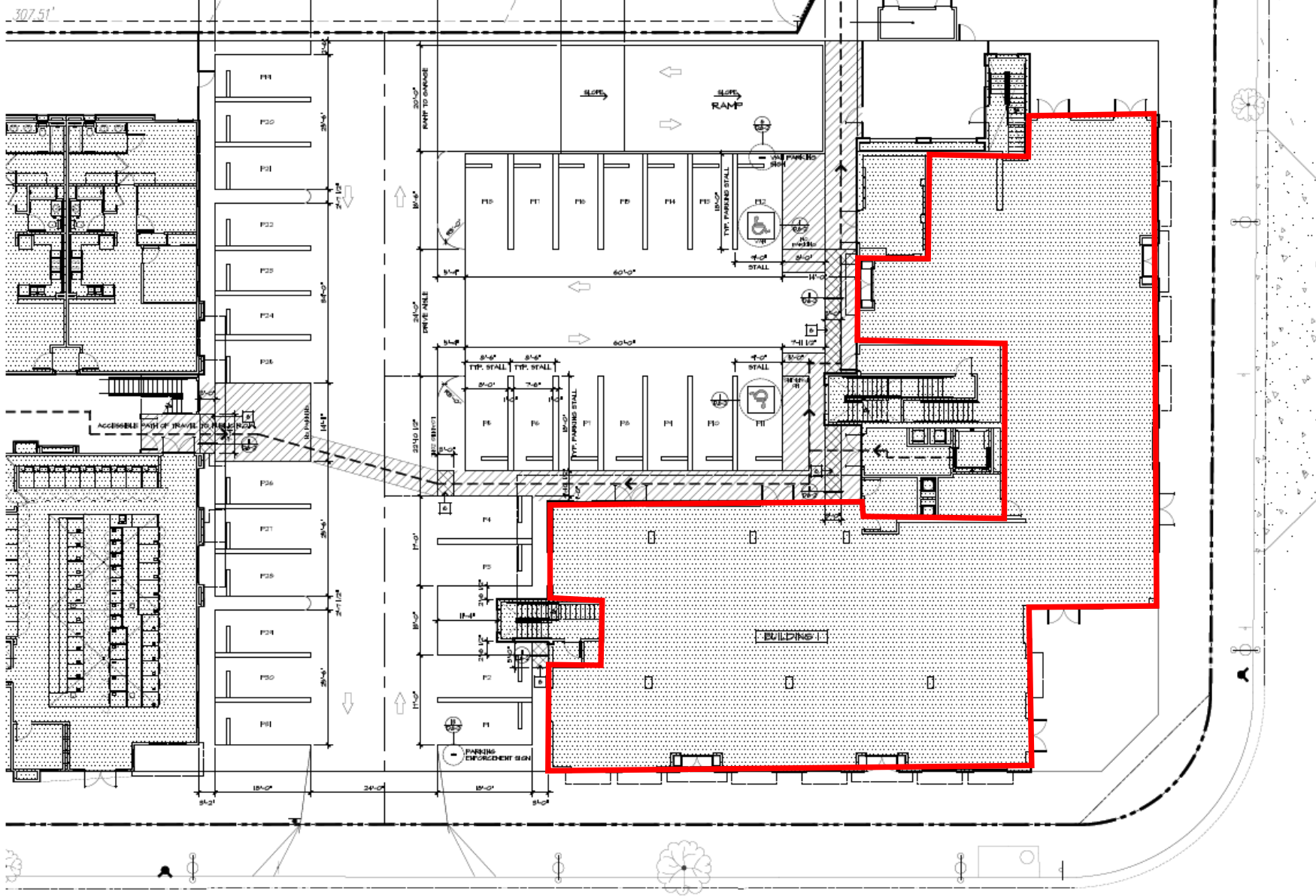
**923
N SANTIAGO
STREET**

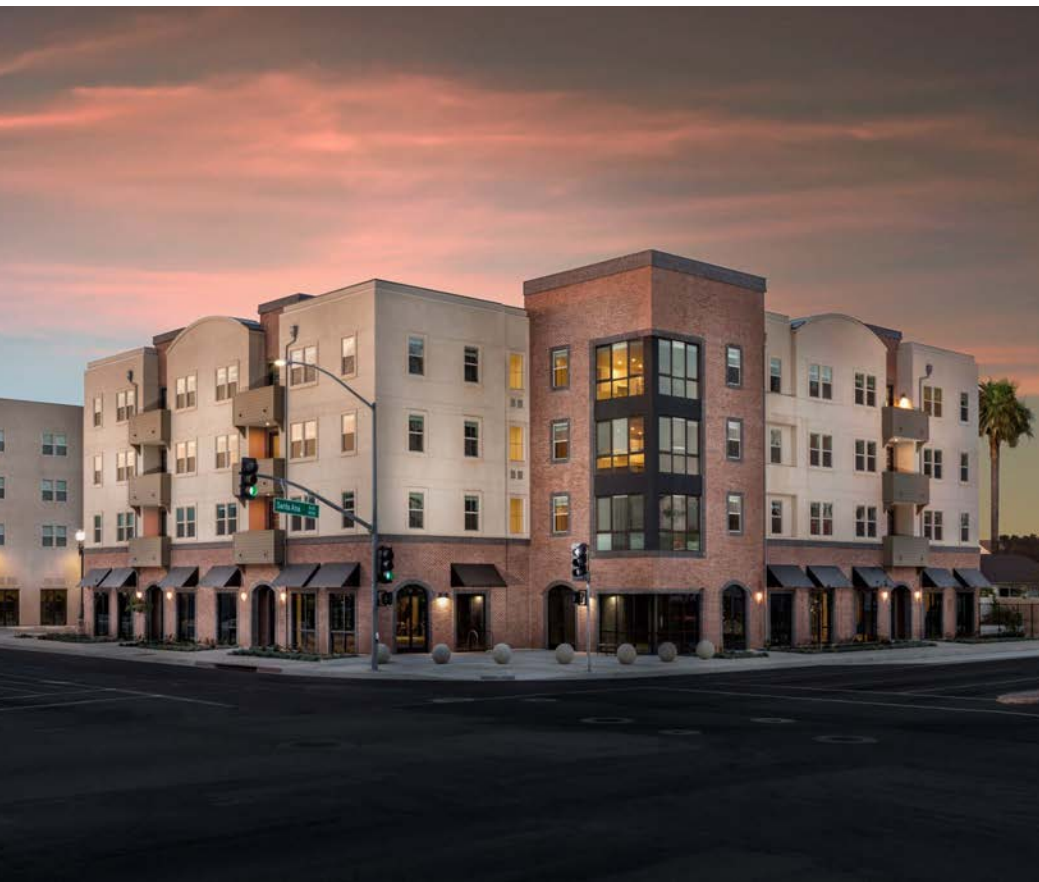
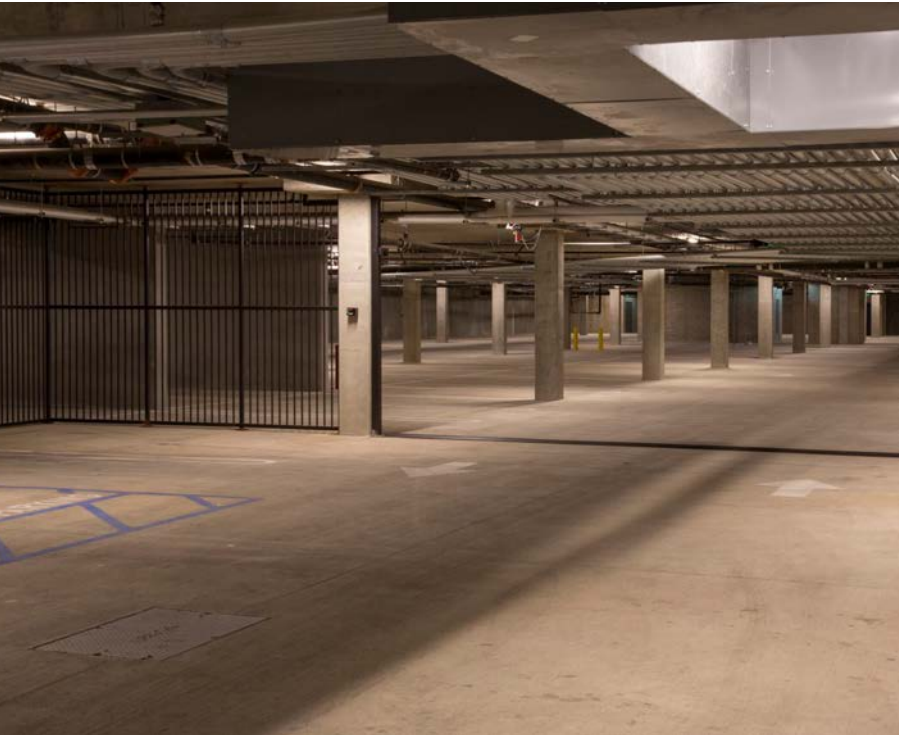


GROUND FLOOR
 RESIDENTIAL UNITS: 8,291 SQ. FT.
 NON-RESIDENTIAL UNITS: 15,451 SQ. FT.
 CORRIDOR: 3,702 SQ. FT.

9,223 SF

Space Plan







RI RETAIL INSITE

CHRIS HODGMAN

949.284.0223
chodgman@retailinsite.net

MATT MOSER

858.523.2096
mmoser@retailinsite.net

CONNOR STEVENS

858.369.6458
cstevens@retailinsite.net