



Juniper Street Professional Center



Short term Issaquah Sublease

1,142 SF office

\$23.00 PSF, NNN

Available September 1, 2017

Sublease through September 30, 2020

Newly updated finishes

Ideal for medical or office user

Close to various retail amenities

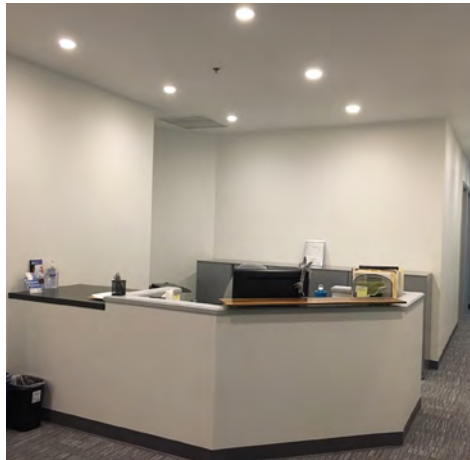
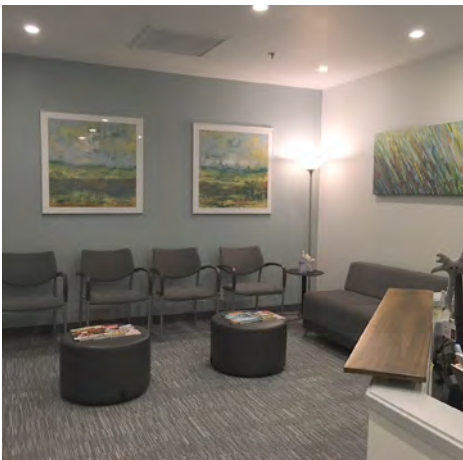
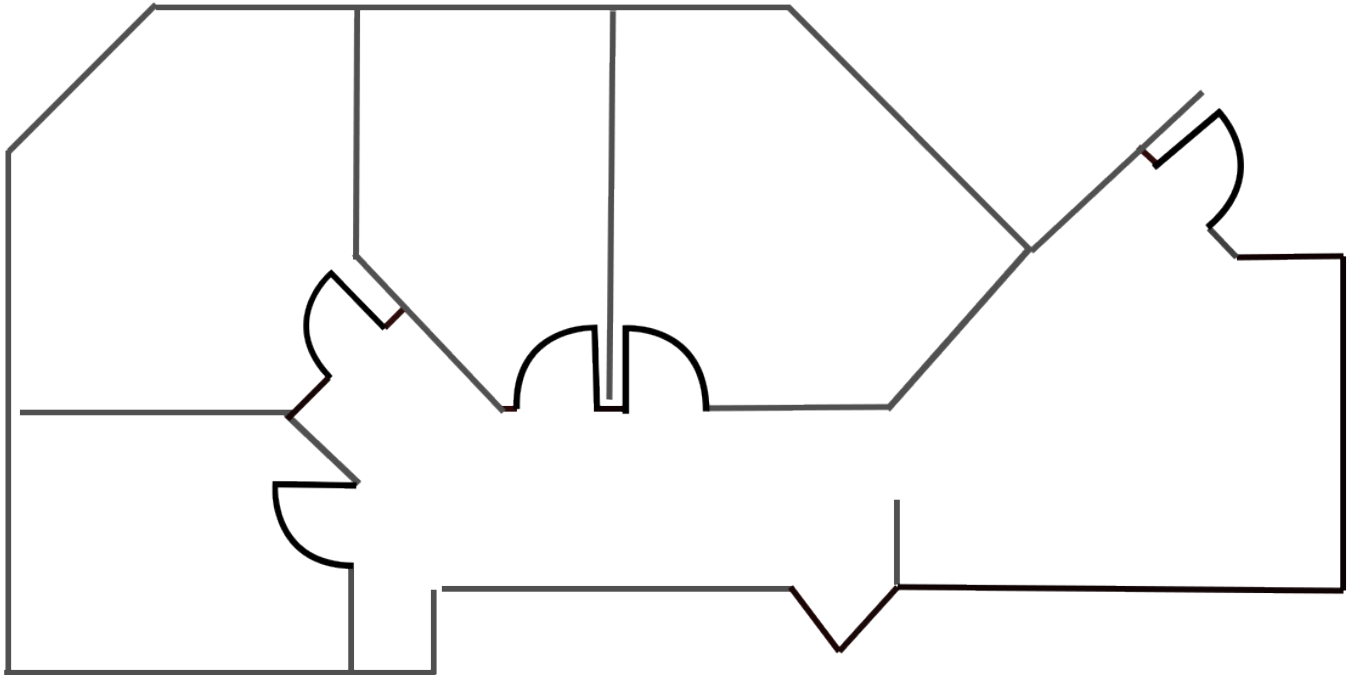
Contact

Jordan Siek
425.450.1151
jsiek@kiddermathews.com

kiddermathews.com

Juniper Street Professional Center

Floor Plan - Suite 212



Contact

Jordan Siek
425.450.1151
jsiek@kiddermathews.com

kiddermathews.com

This information supplied herein is from sources we deem reliable. It is provided without any representation, warranty or guarantee, expressed or implied as to its accuracy. Prospective Buyer or Tenant should conduct an independent investigation and verification of all matters deemed to be material, including, but not limited to, statements of income and expenses. Consult your attorney, accountant, or other professional advisor.

