

FOR LEASE

**±1084-SQUARE FOOT OFFICE
3065 RICHMOND PARKWAY
RICHMOND, CALIFORNIA**



Located at the major intersection of Richmond Parkway and San Pablo Avenue, the property is situated within one mile of I80/580, which connects the San Francisco Bay Area to Sacramento and beyond. Within a mile of Hilltop Mall, plenty of parking onsite.

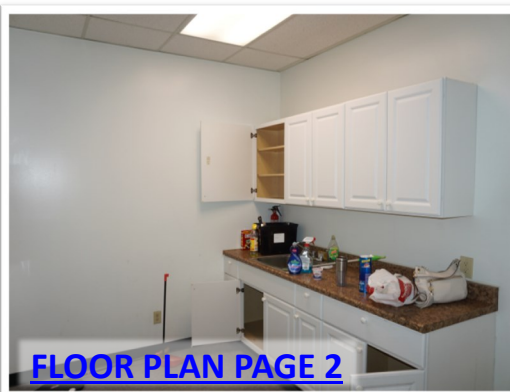
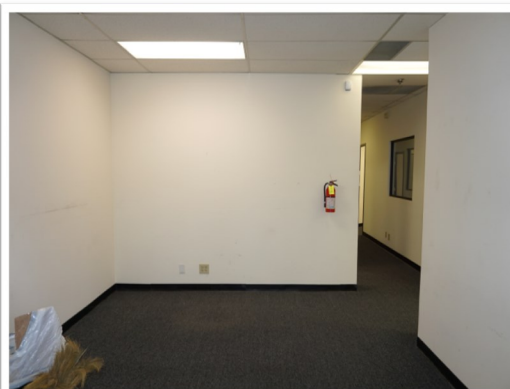
Suite 107A—

- Four (4) offices
- Conference room
- Reception area
- Kitchenette
- One conference room
- Bathroom

±1084 SQUARE FEET

\$1.50 PSF / \$0.37 CAM

NNN + PG&E



Matt Gondak

510-450-1434

mgondak@mrecommercial.com

(CA BRE No: 00832220)

Jim Hoang

510-350-7346

jhoang@mrecommercial.com

(CA BRE No: 01949301)

[PHOTOS](#)

[FLOOR PLAN](#)

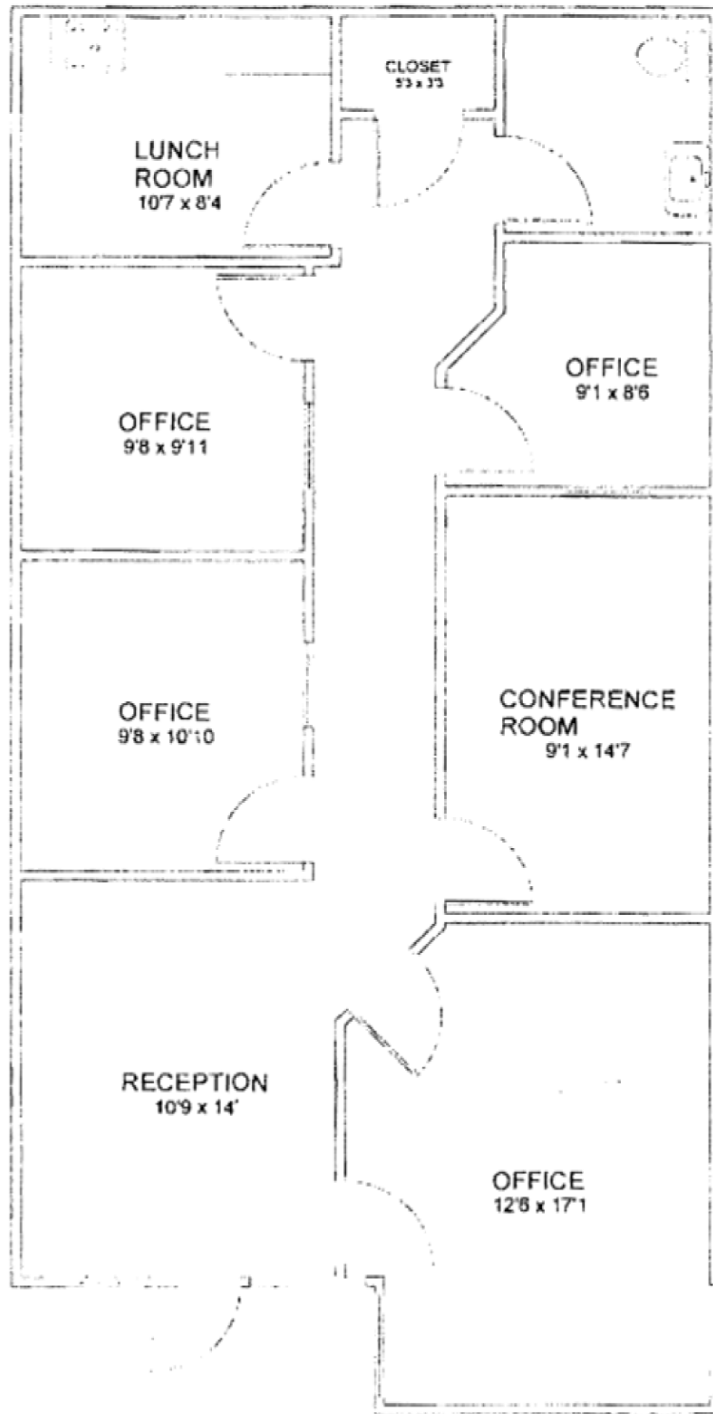
[STREET VIEW](#)

[SATELLITE](#)

[MAP](#)

[AREA BUSINESS](#)

All information furnished herein was provided by sources deemed reliable, but no representation is made or implied as to the accuracy thereof. All information herein is offered in good faith, but is subject to errors, omissions, change of price, prior sale, lease or financing, withdrawal without notice, rental or other conditions.



**3065 Richmond Parkway
Suite 107 A
1,084 Rentable Sq. Ft.**

All information represented on this drawing are approximate and no representation is made to the accuracy of the dimensions. Field verification of the dimensions is recommended prior to committing to a lease.