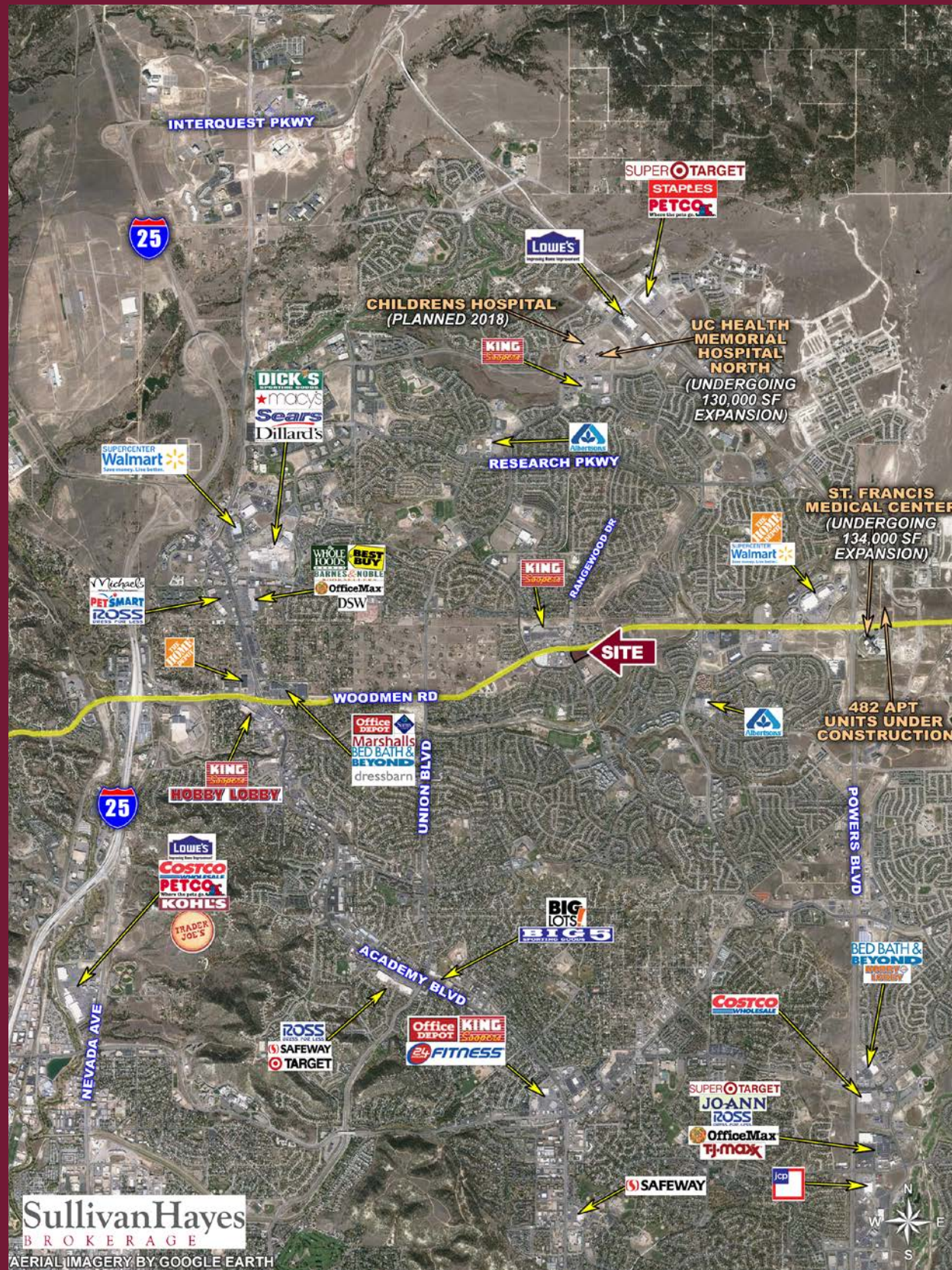


# NEW PAD SITES AVAILABLE

SEC WOODMEN ROAD & RANGEWOOD DRIVE | COLORADO SPRINGS, COLORADO



SullivanHayes  
BROKERAGE  
AERIAL IMAGERY BY GOOGLE EARTH

The information contained herein has been compiled from sources believed to be reliable. However, SullivanHayes has not independently verified the same and makes no guarantee, warranty or representation about such information. Any opinions, assumptions or projections used are for illustrative purposes only and do not necessarily represent the current or future performance of the property. Site plans, renderings, aeriels, marketing data, pricing and other terms are subject to change at any time. You and your tax, financial and legal advisors should make a thorough independent investigation of the property to determine its suitability to your needs. SullivanHayes, its broker associates and its salespersons, are or will be acting as agents of the seller/lessor with the duty to represent the interests of the seller/lessor. SullivanHayes will not act as your agent unless an agency agreement is signed and in effect.

# NEW PAD SITES AVAILABLE

SEC WOODMEN ROAD & RANGEWOOD DRIVE | COLORADO SPRINGS, COLORADO



AERIAL PROVIDED BY GOOGLE EARTH

SullivanHayes  
BROKERAGE

## INFORMATION

- CVS PLANNING TO OPEN Q4 2017!
- Pad sites available for sale, ground lease or BTS
- High traffic volumes
- Located across from King Soopers anchored shopping center

## DEMOGRAPHICS

	1 MILE	3 MILE	5 MILE
Population	15,506	107,687	204,811
Avg. HH Inc.	\$92,412	\$93,115	\$88,103
Employees	4,205	48,676	87,374

Source: Allocate Data 2016

## TRAFFIC COUNTS

On Woodmen Rd west of Rangewood Dr 37,760 cars/day  
Source: CoStar-2015

2000 South Colorado Boulevard | Suite 8500, Tower 1 | Denver, Colorado 80222 | 303.534.0900 Fax: 303.831.1333 | www.sullivanhayes.com

SullivanHayes  
BROKERAGE

we are  
RETAIL  
A MEMBER OF  
CHAINLINKS  
RETAIL ADVISORS

Mark Ernster  
720.382.7508 | memster@sullivanhayes.com  
Bryan Slaughter  
303.370.7459 | bslaughter@sullivanhayes.com



# NEW PAD SITES AVAILABLE

SEC WOODMEN ROAD & RANGEWOOD DRIVE | COLORADO SPRINGS, COLORADO



2000 South Colorado Boulevard | Suite 8500, Tower 1 | Denver, Colorado 80222

303.534.0900 Fax: 303.831.1333 | www.sullivanhayes.com

**SullivanHayes**  
B R O K E R A G E

we are  
**RETAIL**  
A MEMBER OF  
**CHAINLINKS**  
RETAIL ADVISORS

**Mark Ernster**  
720.382.7508 | mernster@sullivanhayes.com

**Bryan Slaughter**  
303.370.7459 | bslaughter@sullivanhayes.com