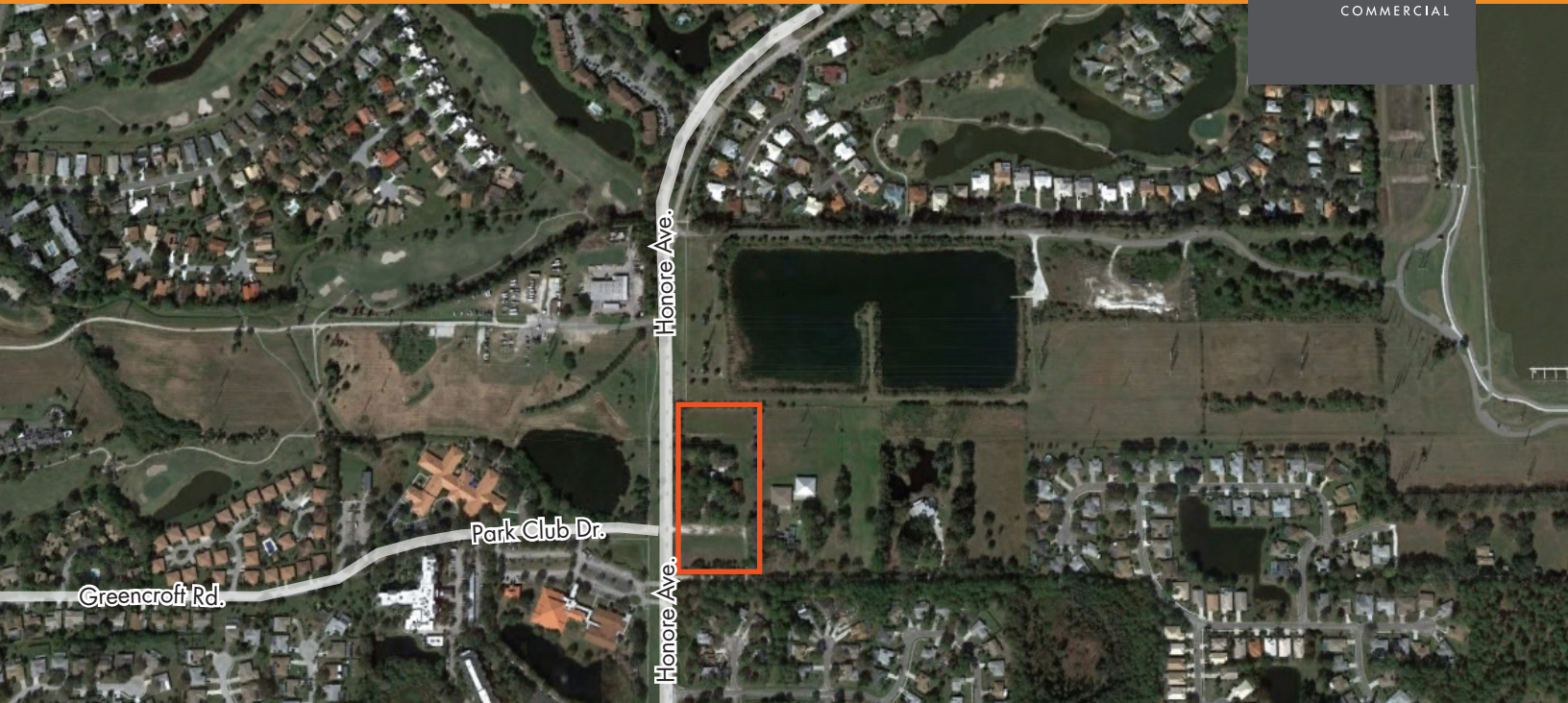


# SARASOTA RESIDENTIAL DEVELOPMENT SITE FOR SALE

**4.63± ACRES**

**FOUNDRY**  
COMMERCIAL



Asking Price \$1,300,000

Reduced to \$995,000

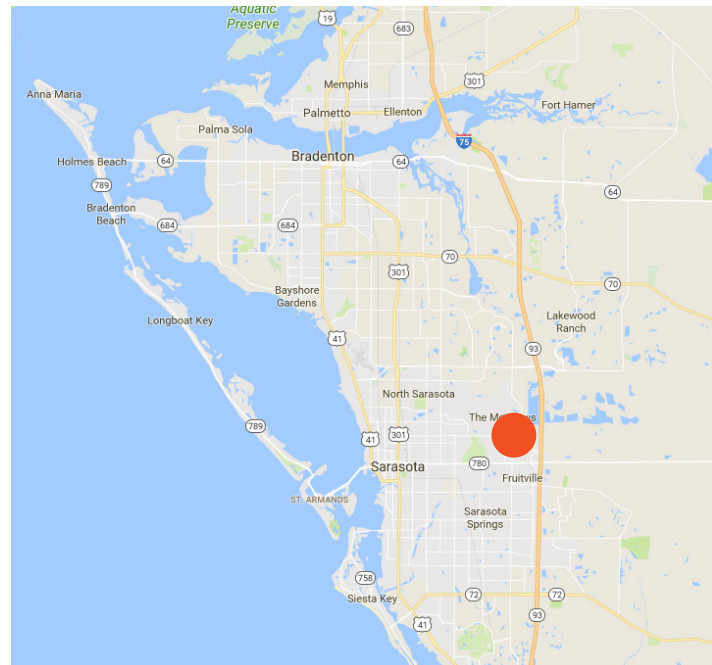
**2250 N. HONORE AVE. - SARASOTA, FL 34235**

## PROPERTY OVERVIEW

Foundry Commercial is pleased to present approximately 4.63± acres of land located on N Honore Avenue, approximately 2.5 miles south of University Parkway. Current OUE2 zoning designation within Sarasota County allows for low density residential development up to 1 unit per 2 acres. Future land use designation is currently Moderate Density Residential which allows for up to 5 residential units per acre. The property presents an excellent opportunity for a developer to propose to Sarasota County a zoning and potential future land use change that would allow increased residential density for townhouse, multifamily or senior living residential redevelopment benefiting from the proximity to amenities surrounding the UTC Mall area.

## SITE FEATURES

LAND SIZE	4.63± ACRES
ZONING	OUE-2
PARCEL ID	0037050001
UTILITIES	COUNTY WATER AND SEWER AVAILABLE



For more information, please contact:

**JOEY BLAKLEY**

Senior Vice President

407.540.7737

joey.blakley@foundrycommercial.com

Although all information is furnished regarding for sale, rental or financing is from sources we deem reliable, such information has not been verified and no express representation is made nor is any to be implied as to the accuracy thereof, and it is submitted subject to errors, omissions, changes of price, rental or other conditions, prior sale, lease or financing, or withdrawal without notice. All sizes approximate and subject to survey.

420 S. Orange Ave. Suite 400  
Orlando, FL 32801

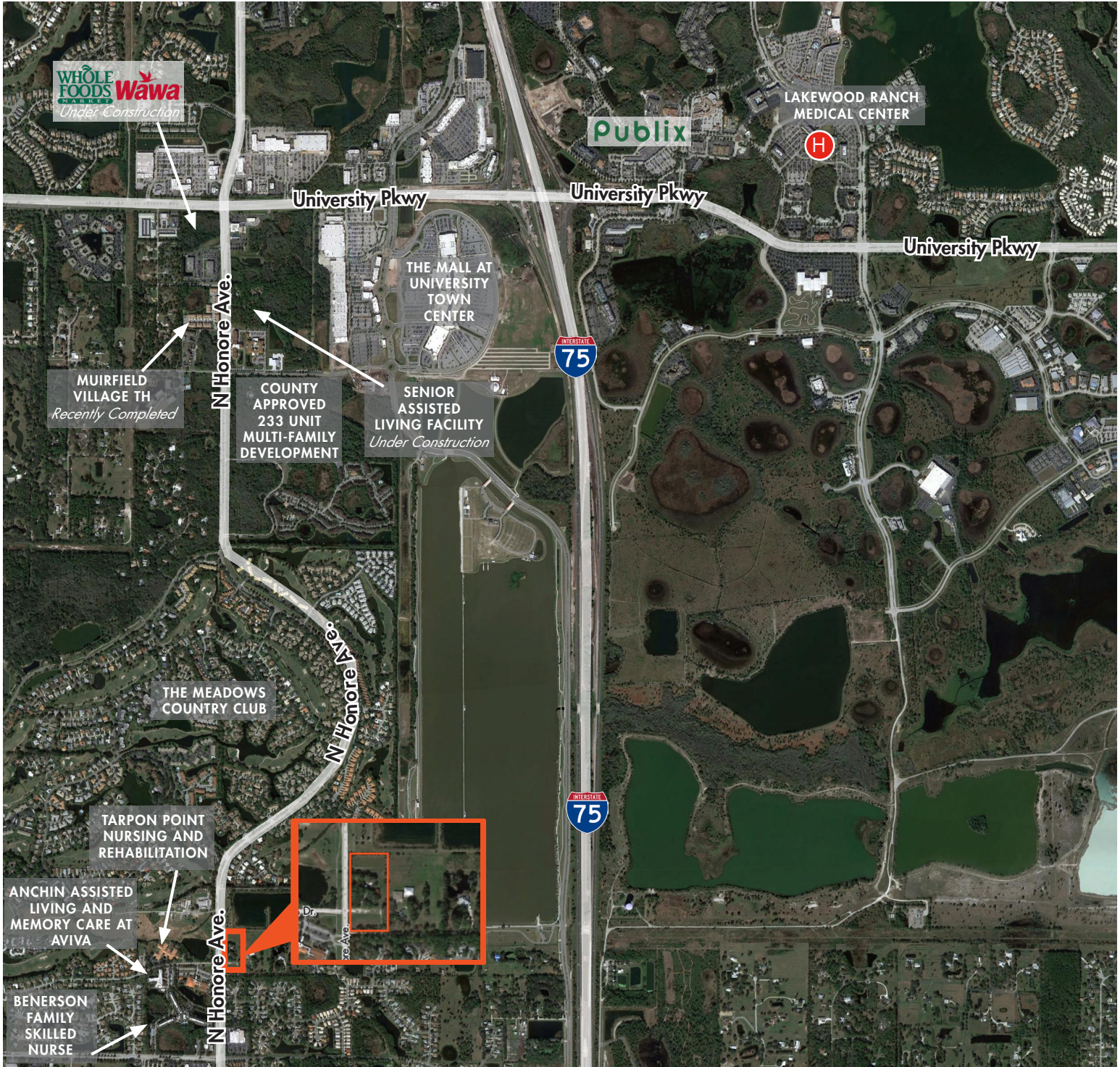
[foundrycommercial.com](http://foundrycommercial.com)



# SARASOTA RESIDENTIAL DEVELOPMENT SITE FOR SALE

4.63± ACRES

## LOCATION



For more information, please contact:

**JOEY BLAKLEY**  
Senior Vice President  
407.540.7737  
joey.blakley@foundrycommercial.com

Although all information is furnished regarding for sale, rental or financing is from sources we deem reliable, such information has not been verified and no express representation is made nor is any to be implied as to the accuracy thereof, and it is submitted subject to errors, omissions, changes of price, rental or other conditions, prior sale, lease or financing, or withdrawal without notice. All sizes approximate and subject to survey.

**FOUNDRY**  
COMMERCIAL

420 S. Orange Ave. Suite 400  
Orlando, FL 32801

[foundrycommercial.com](http://foundrycommercial.com)