

**AVISON  
YOUNG**



**LADSON CROSSING**

**9616**

**HIGHWAY 78**

LADSON, SC 29456

**PHARMACY SPACE AVAILABLE INSIDE PIGGLY WIGGLY**

**Craig Massey**

Retail & Investment Services

C 843.860.7687

[craig.massey@avisonyoung.com](mailto:craig.massey@avisonyoung.com)



## Leasing Information

Size	Lease Rate	Lease Type	Available
500 sf	\$1,750.00/month	Modified Gross	Available Now

NOTE : TENANT WILL PAY FOR COMMUNICATION LINES SHOULD YOU NEED THEM TO PROCESS PRESCRIPTIONS

**9616 Highway 78, Ladson, SC 29456**

## Snapshot

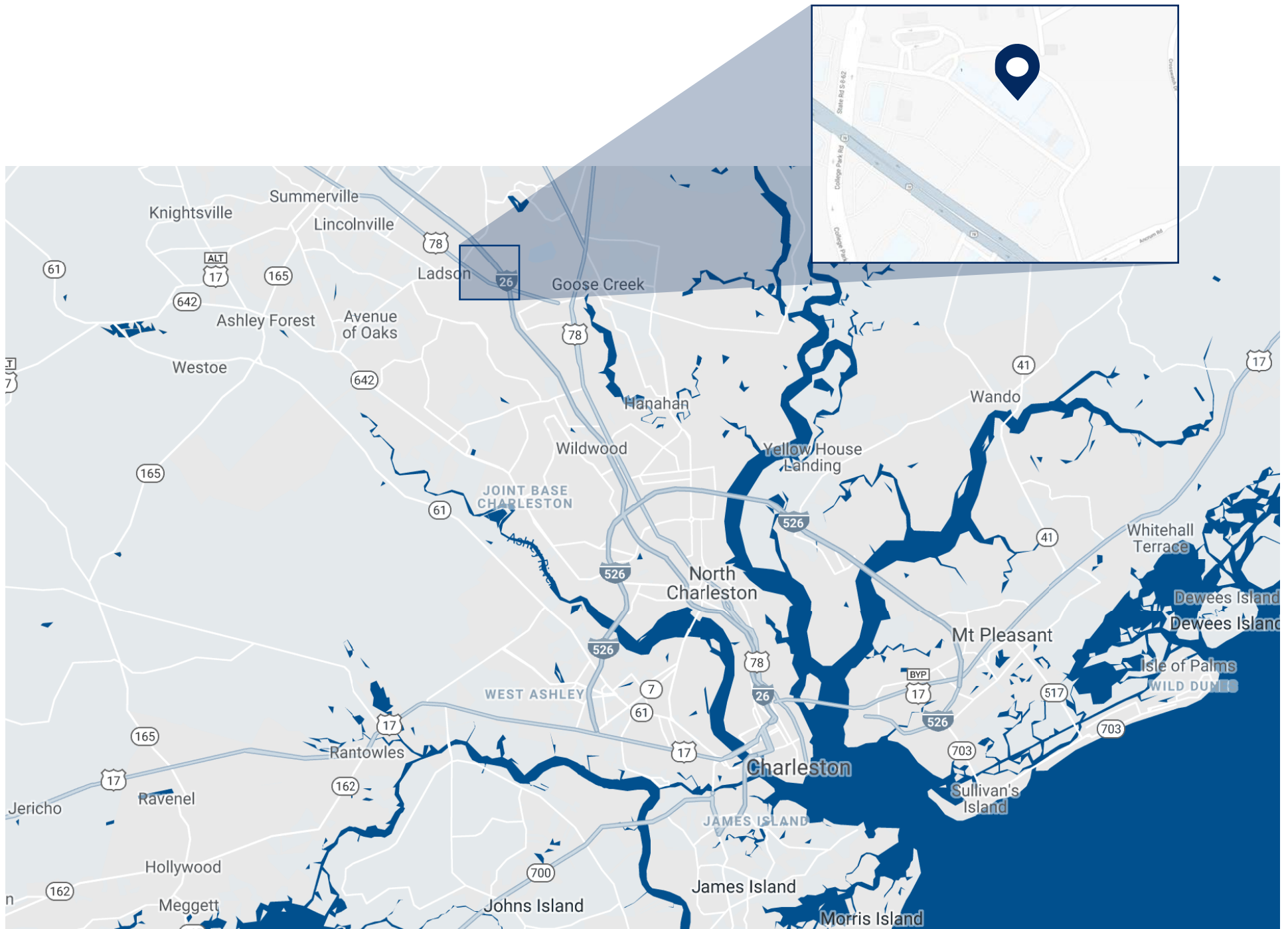
<b>Year Built</b>	<b>2000</b>
<b>Total Building Size</b>	<b>60,860 sf</b>
<b>Lot Acreage</b>	<b>10.49 acres</b>
<b>County</b>	<b>Dorchester</b>
<b>Municipality</b>	<b>City of Charleston</b>
<b>Zoning</b>	<b>General Business (GB)</b>

## The Offering

Turnkey Pharmacy space in Ladson Crossing Piggly Wiggly. Product shelving equipment in place. Fixed rent no utilities, tenant only pays for communication lines and equipment.

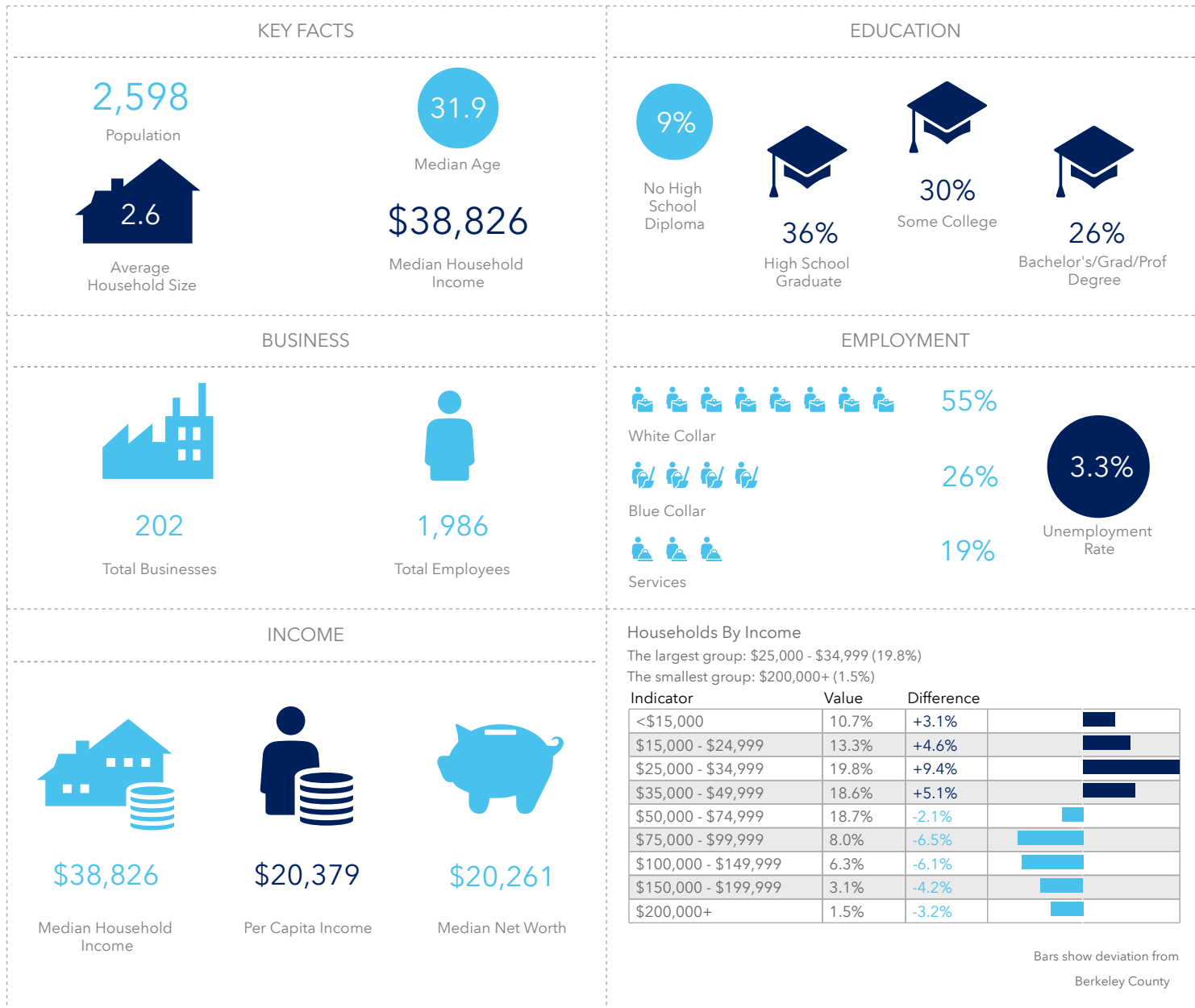
Highly desired Ladson Road location. Vibrant shopping center with excellent walk in traffic. Close to Trident Hospital, Charleston Southern and many well established neighborhoods.





The information contained herein was obtained from sources believed reliable, however, Avison Young makes no guarantees, warranties, or representations as to the completeness or accuracy thereof. The presentation of this property is submitted subject to errors, omissions, change of price or conditions prior to sale or lease, or withdrawal without notice. South Carolina, USA, Avison Young Offices are Owned and Operated by Avison Young - South Carolina, Inc.

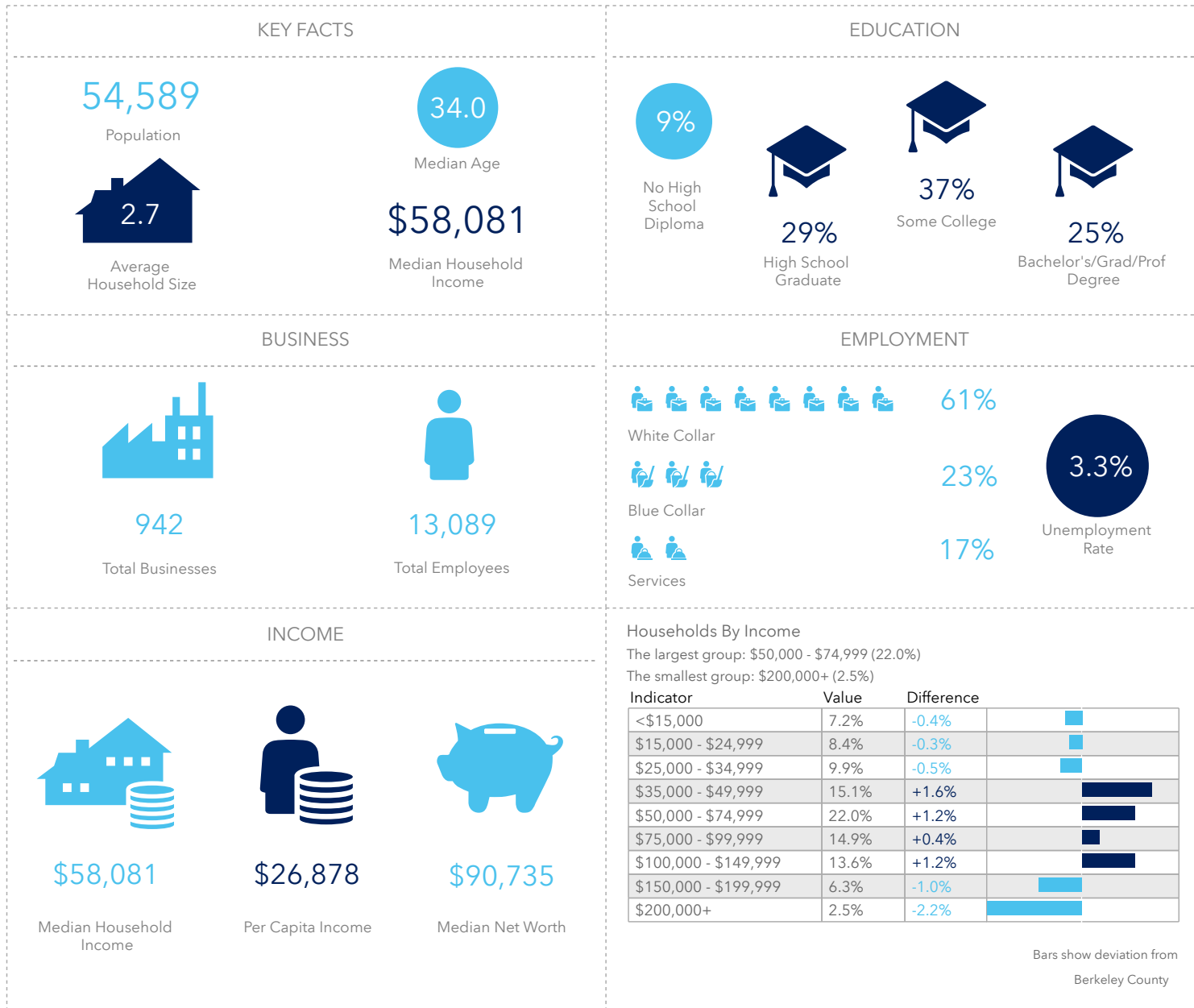
# One Mile Radius



"Portions of this document include intellectual property of Esri and its licensors and are used under license. Copyright © [February 21, 2020] Esri and its licensors. All rights reserved."

The information contained herein was obtained from sources believed reliable, however, Avison Young makes no guarantees, warranties, or representations as to the completeness or accuracy thereof. The presentation of this property is submitted subject to errors, omissions, change of price or conditions prior to sale or lease, or withdrawal without notice. South Carolina, USA, Avison Young Offices are Owned and Operated by Avison Young - South Carolina, Inc.

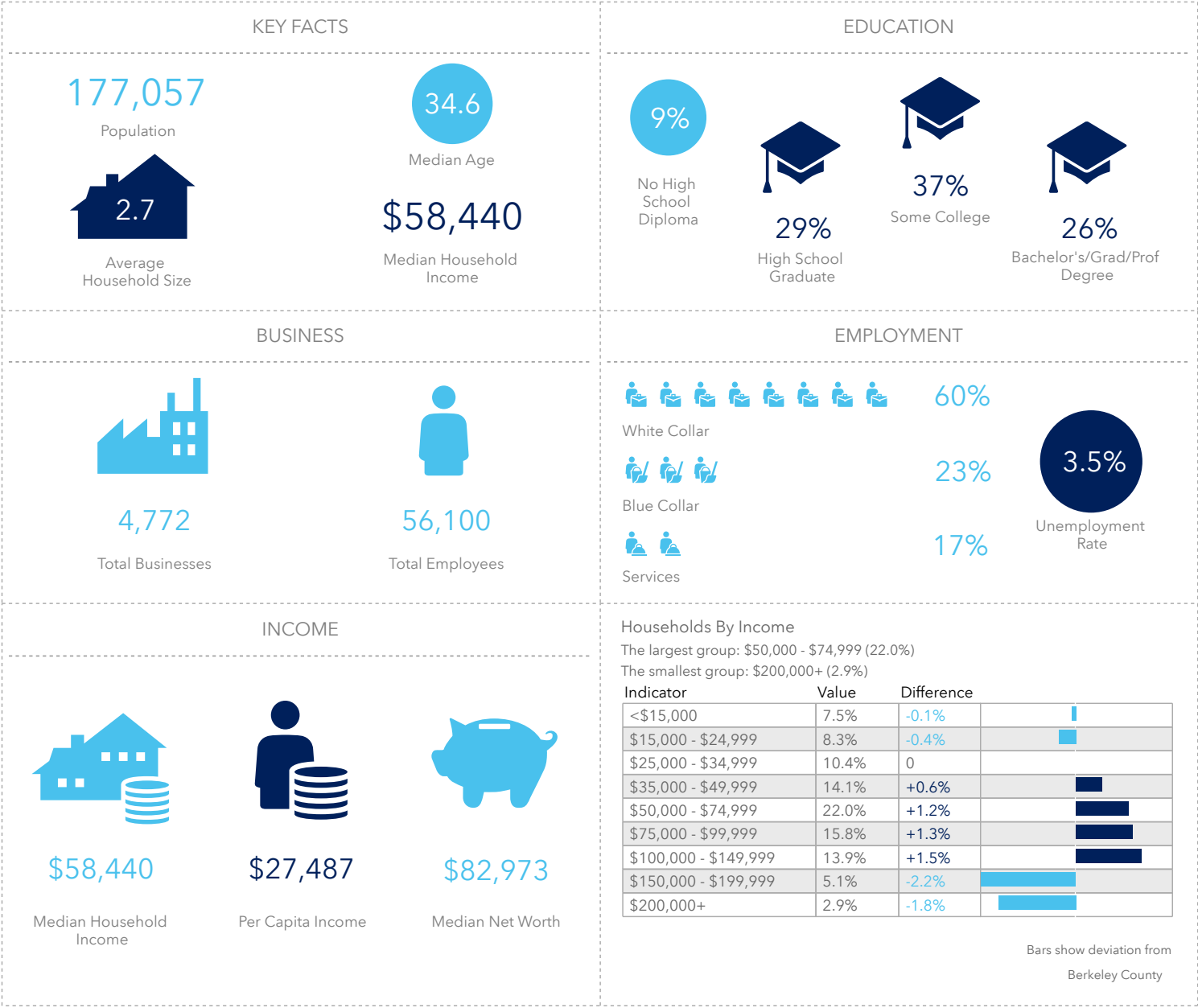
# Three Mile Radius



"Portions of this document include intellectual property of Esri and its licensors and are used under license. Copyright © [February 21, 2020] Esri and its licensors. All rights reserved."

The information contained herein was obtained from sources believed reliable, however, Avison Young makes no guarantees, warranties, or representations as to the completeness or accuracy thereof. The presentation of this property is submitted subject to errors, omissions, change of price or conditions prior to sale or lease, or withdrawal without notice. South Carolina, USA, Avison Young Offices are Owned and Operated by Avison Young - South Carolina, Inc.

# Five Mile Radius



"Portions of this document include intellectual property of Esri and its licensors and are used under license. Copyright © [February 21, 2020] Esri and its licensors. All rights reserved."

The information contained herein was obtained from sources believed reliable, however, Avison Young makes no guarantees, warranties, or representations as to the completeness or accuracy thereof. The presentation of this property is submitted subject to errors, omissions, change of price or conditions prior to sale or lease, or withdrawal without notice. South Carolina, USA, Avison Young Offices are Owned and Operated by Avison Young - South Carolina, Inc.



## South Carolina Brokerage Team

Our South Carolina brokers deliver integrated real estate services to occupiers and investors. Through a dedicated principal-led business resources team, we provide solutions via tools, technology and expertise to support our clients however complex their challenges.

Our approach is holistic and consistent.

It starts with the Avison Young team's understanding of your business priorities, not with real estate transactions. For our clients, this means we produce customized, cost-effective solutions with speed, creativity and confidence.

## Listing Broker



### **Craig Massey**

Associate

Retail & Investment Services

O 843.725.7200

D 843.973.8360

C 843.8607687

[craig.massey@avisonyoung.com](mailto:craig.massey@avisonyoung.com)

## Support Team



### **Tate Walkush**

Marketing Coordinator

[tate.walkush@avisonyoung.com](mailto:tate.walkush@avisonyoung.com)



LADSON CROSSING

P  
H  
A  
R  
M  
A  
C  
Y

piggly  
wiggly

Thank you.

**AVISON  
YOUNG**

[avisonyoung.com](http://avisonyoung.com)

1315 Ashley River Road  
Charleston, South Carolina 29407  
O 843.725.7200  
F 843.725.7201  
Avison Young - South Carolina, Inc.



Platinum  
member