



FAR NORTH SHOPPING CENTER

6300 San Mateo Blvd NE, Albuquerque, New Mexico 87109



Offered Exclusively By



GRUBB & ELLIS
New Mexico

TOM JONES, CCIM, Senior Vice President
505.880.7063 | tomjones@nmrea.com

BEN PERICH, Associate
505.880.7054 | bperich@nmrea.com

FAR NORTH SHOPPING CENTER

6300 San Mateo Blvd NE, Albuquerque, New Mexico 87109

SHOPPING CENTER: 146,898±SF of Leasable Space on 8.11±Acres

AVAILABLE SPACE:

SUITE	SIZE	RATE
M1	1,300 SF	\$28/SF
C4	2,400 SF	\$16/SF
D2/3	1,860 SF	\$16/SF
F2	2,986 SF	\$16/SF
F4	3,200 SF	\$16/SF
H3	1,600 SF	\$16/SF
S1	8,657 SF	\$14/SF

ZONING: C-2 (SC)

DEMOGRAPHICS: POPULATION: MEDIAN HH INCOME:

1 MILE: 11,076 1 MILE: \$38,930
3 MILE: 96,781 3 MILE: \$47,525
5 MILE: 237,479 5 MILE: \$48,706

TRAFFIC COUNT: SAN MATEO: 44,900 CPD
ACADEMY: 29,400 CPD

CONTACT: **TOM JONES, CCIM**, Senior Vice President
505.880.7063 | tomjones@nmrea.com

BEN PERICH, Associate
505.880.7054 | bperich@nmrea.com

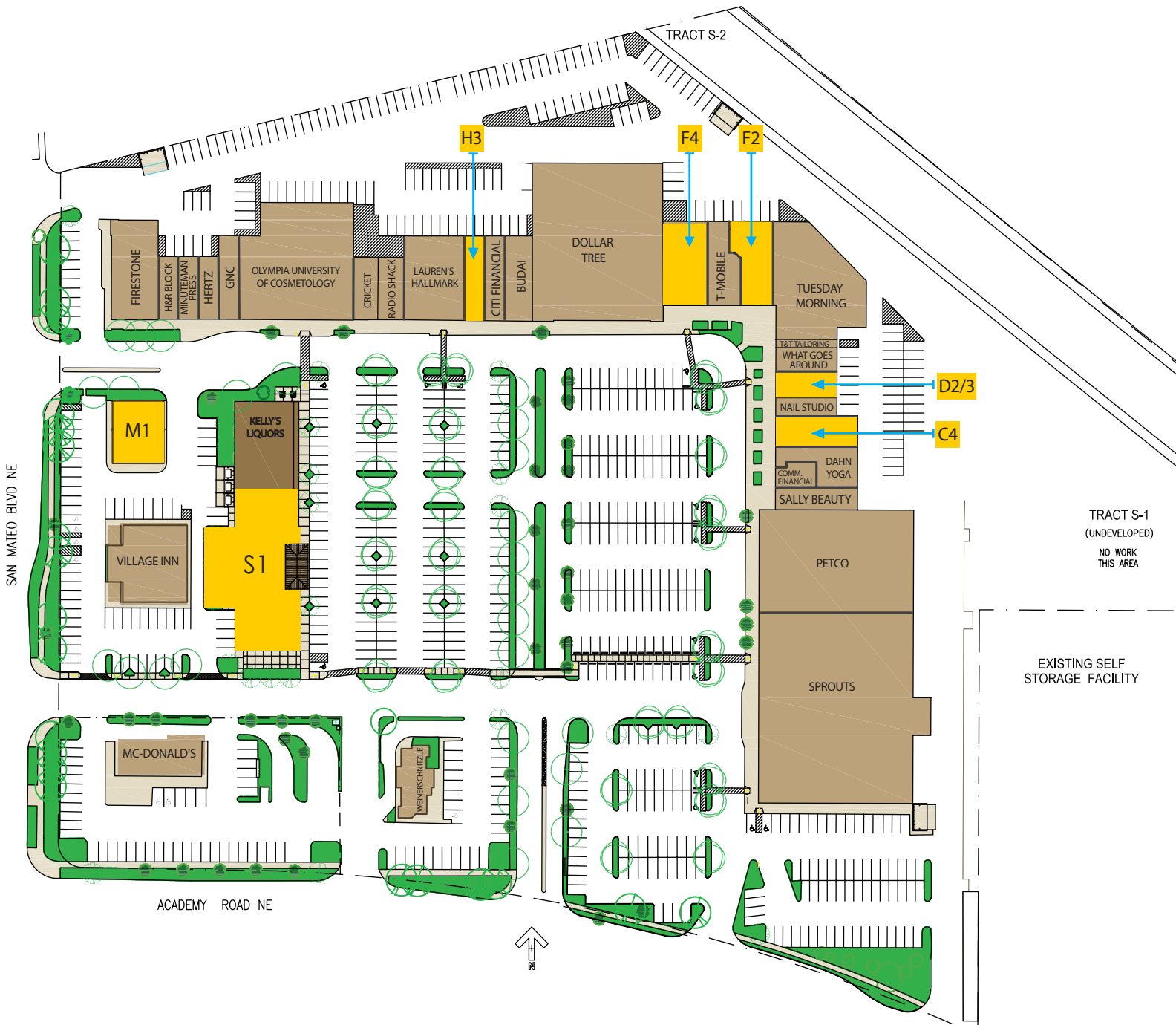


GRUBB & ELLIS
New Mexico



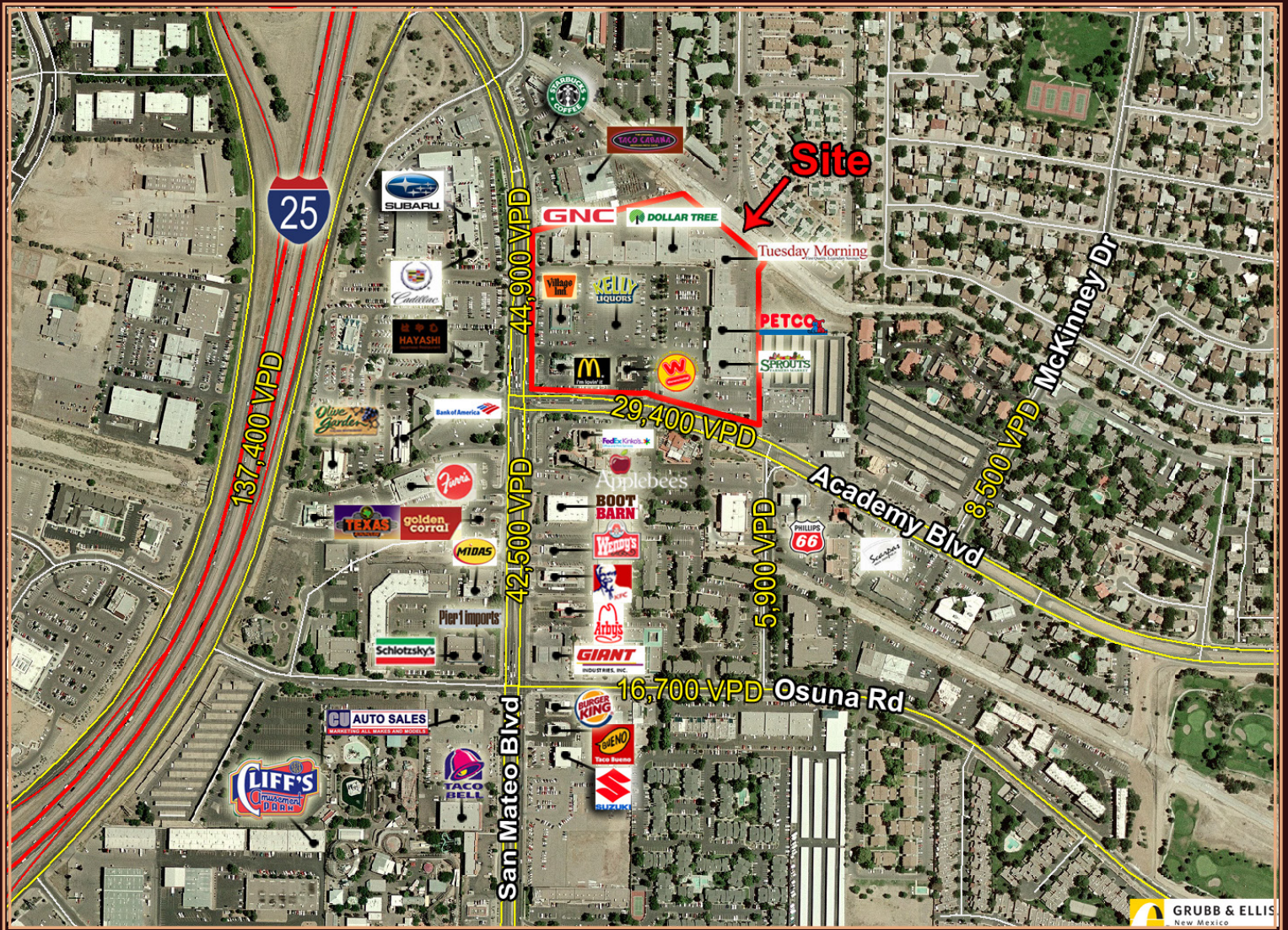
MAJOR TENANTS

SPROUTS, DOLLAR TREE, PETCO, HALLMARK,
TUESDAY MORNING, FIRESTONE, McDONALD'S,
RADIO SHACK, & VILLAGE INN





FAR NORTH SHOPPING CENTER



The information contained herein was obtained from sources believed to be reliable; however, Grubb & Ellis company makes no guarantees, warranties or representations as to the completeness or accuracy thereof. The presentation of this property is submitted subject to errors, omissions, change of price or conditions prior to sale or lease, or withdrawal without notice.