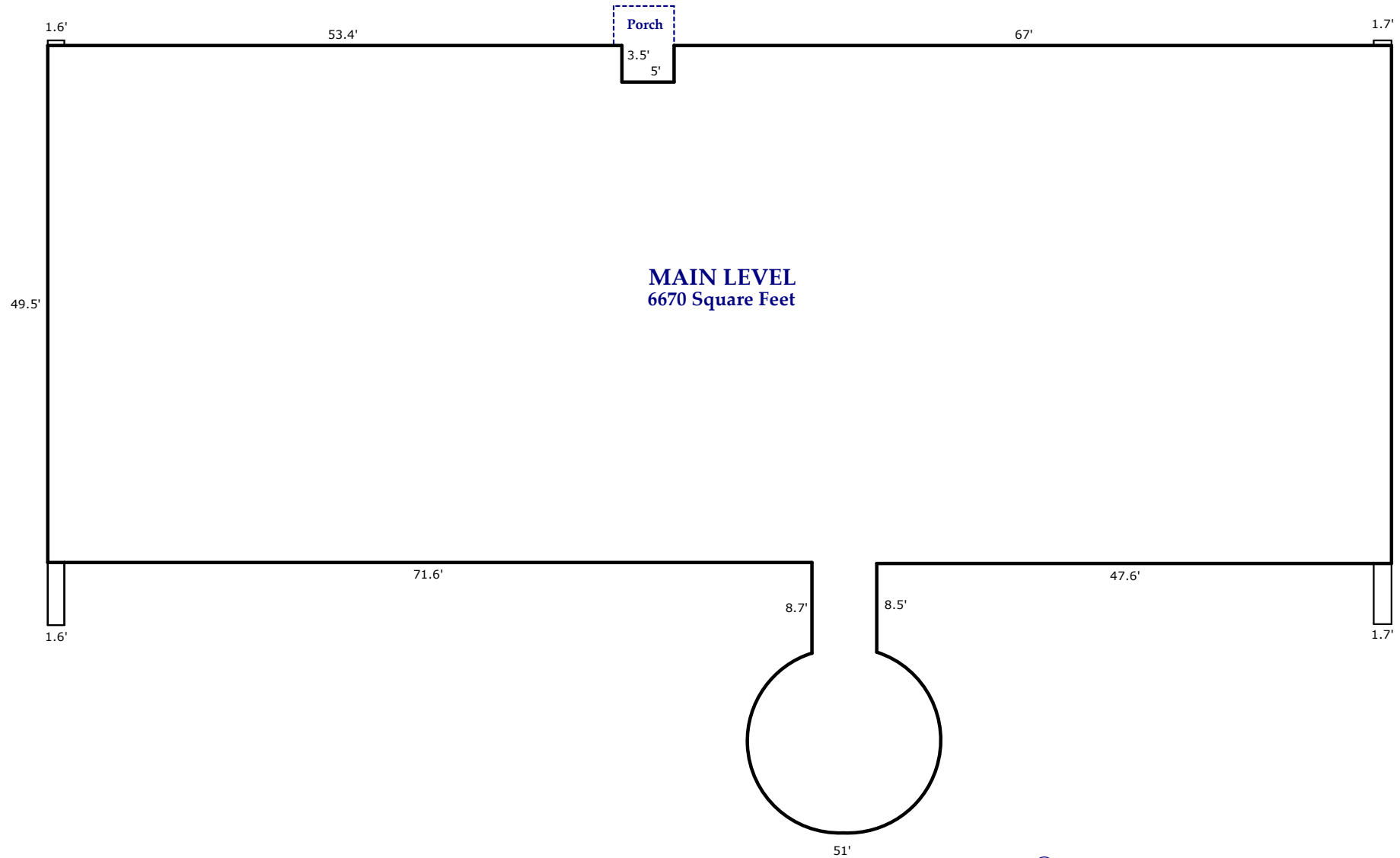


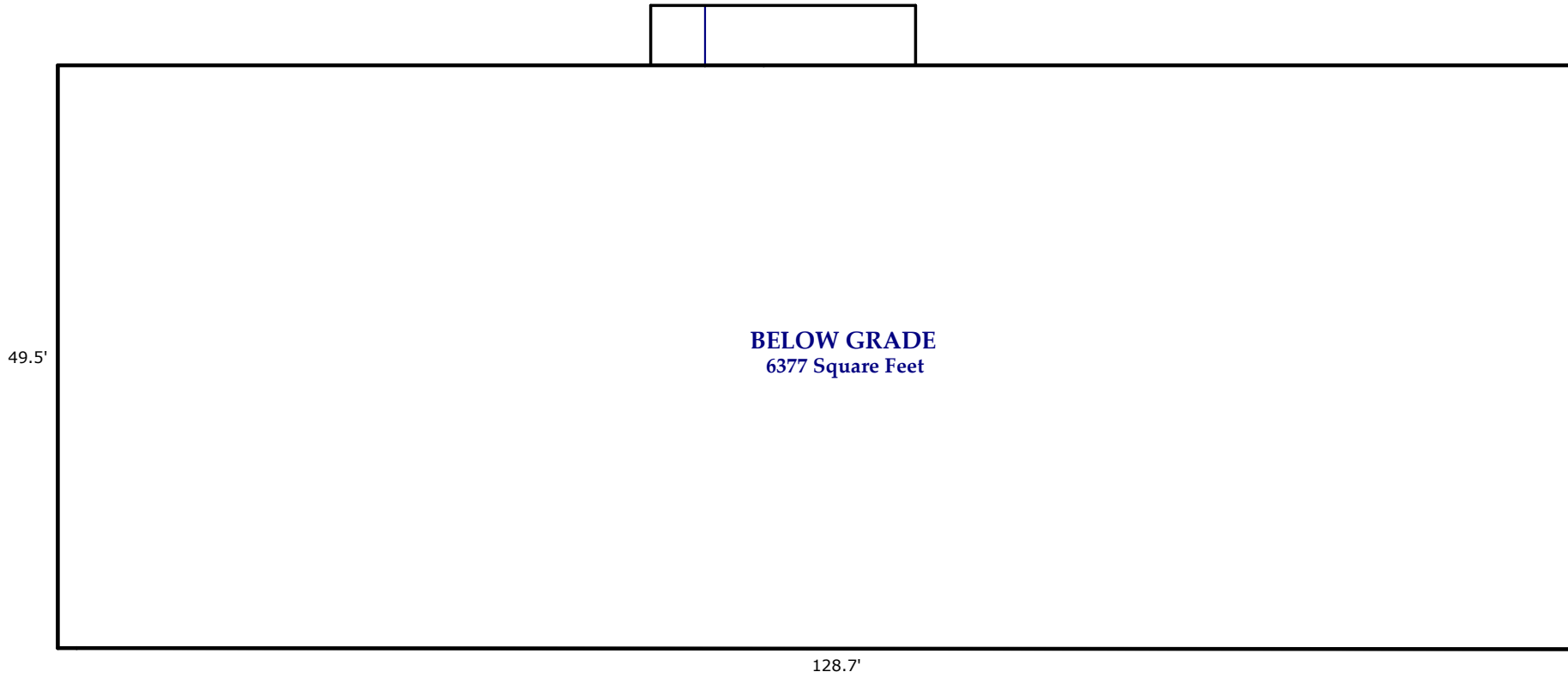
86 Asheland Avenue, Asheville

Gross Building Area:
13,047 Square Feet

Main Level: 6670 Square Feet
Below Grade: 6377 Square Feet



Prepared by Judy Brouillette-O'Neil: ProPlans of the Carolinas, LLC ©
for Carla & Company Real Estate Services



All dimensions are rounded to the nearest .01 and are deemed reliable, but not guaranteed.
Square Footage Calculations determined following ANSI and BOMA Standards and NCREC House Measuring Square Footage Guidelines.