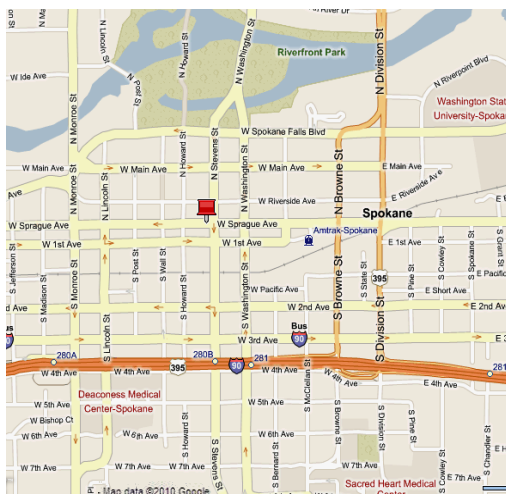


# Upscale Office Suites Available Downtown The Fernwell Building 505 W. Riverside, Spokane, Washington



## Available Space

**Suite 605: 1,656 SF ±**

**LEASE RATE: \$16/SF FS**

- Located in the Heart of Spokane's Central Business District (CBD)
- Energy Efficient Building Systems
  - Implementing Green & Sustainable Management Practices
- Connectivity:
  - Fiber (XO & CenturyLink)
  - Comcast
- Full-Time, On-Site Staff
- Storage Available
- Victorian Era Architecture
- 6 Story Atrium With Central Skylight
- Ample Parking Within a 2 Block Radius
- Within Walking Distance to Downtown Amenities
- Anchor Tenant - Columbia Bank

### Contact Information:

**Jon Jeffreys, SIOR**

509 622 3566

[jjeffreys@naiblack.com](mailto:jjeffreys@naiblack.com)

Black Commercial, Inc.

801 W. Riverside Avenue, Suite 300

Spokane, WA 99201

direct 509 623 1000

fax 509 622 3500

[www.naiblack.com](http://www.naiblack.com)



The information contained herein has been given to us by the owner of the property or other sources we deem reliable. We have no reason to doubt its accuracy, but we do not guarantee it. All information should be verified prior to purchase or lease.



**Upscale Finish  
and  
Custom Design**

Traffic Counts  
Riverside:  
6,700 ADT  
Stevens:  
12,600 ADT

**Building Accommodates  
Technology Companies,  
Attorneys, Design Firms,  
Engineers, Financial  
Companies, Restaurants,  
Cafés, Bakeries,  
Bookstores, Retail Sales &  
Boasts an Entire Floor of  
Executive Suites.**

**Contact Information:**

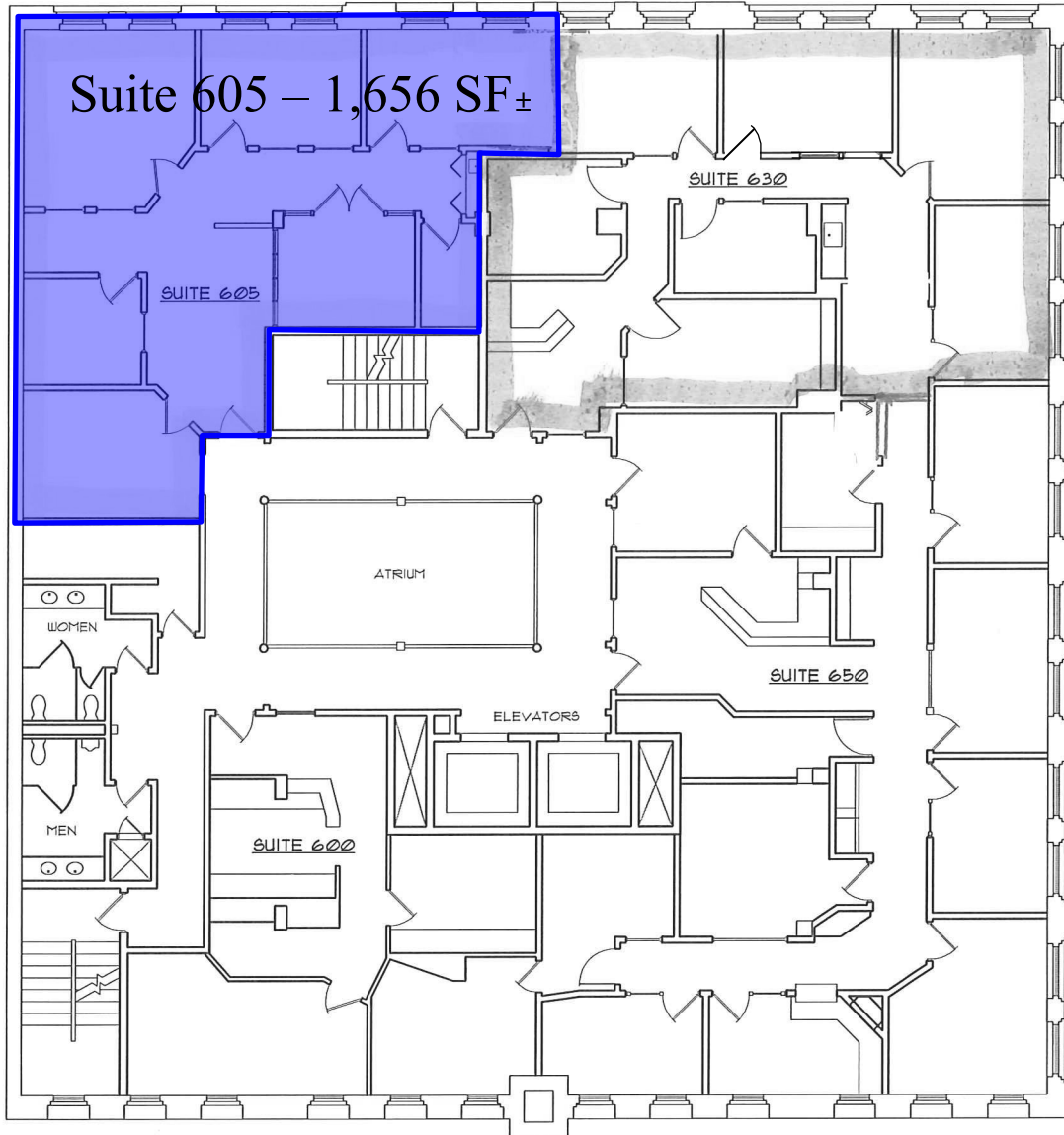
**Jon Jeffreys, SIOR**  
509 622 3566  
jjeffreys@naiblack.com

Black Commercial, Inc.  
801 W. Riverside Avenue, Suite 300  
Spokane, WA 99201  
direct 509 623 1000  
fax 509 622 3500  
www.naiblack.com



The information contained herein has been given to us by the owner of the property or other sources we deem reliable. We have no reason to doubt its accuracy, but we do not guarantee it. All information should be verified prior to purchase or lease.

RIVERSIDE AVENUE



STEVENS STREET

SIXTH FLOOR

Suite 605: 1,656 SF ±

