

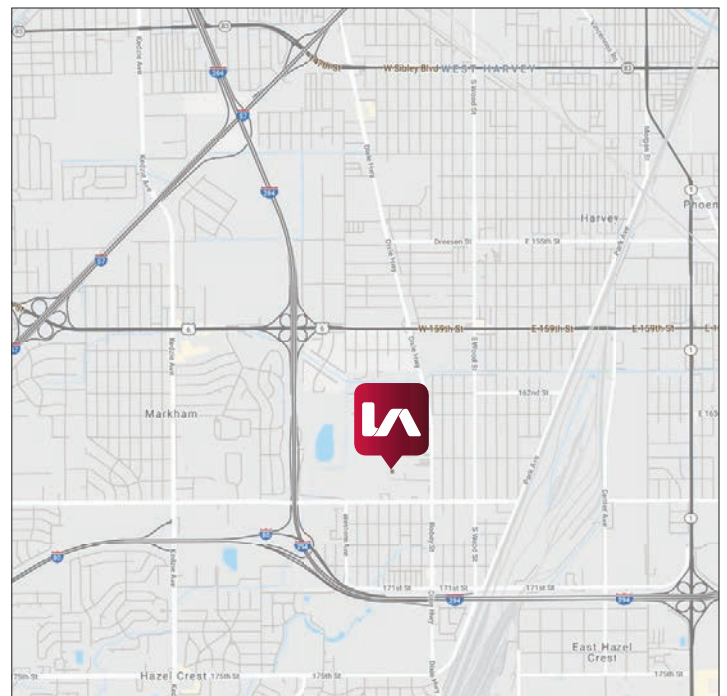
AVAILABLE

2200 W. 166TH ST & 16600 S. DIXIE HWY
MARKHAM, ILLINOIS



TRUCK TERMINAL SPECIFICATIONS:

AVAILABLE:	6 - 87 exterior dock doors
REPAIR BAYS:	6 drive-thru repair bays (with pits)
TOTAL SITE:	± 20 acres
LEASE RATE:	Subject to Offer
SALE PRICE:	Subject to Offer
COMMENTS:	<ul style="list-style-type: none">› Properties are fully fenced, gated and secured (24 hours security staff)› Minutes from I-294, I-80 and I-57› 6B property tax abatement in place



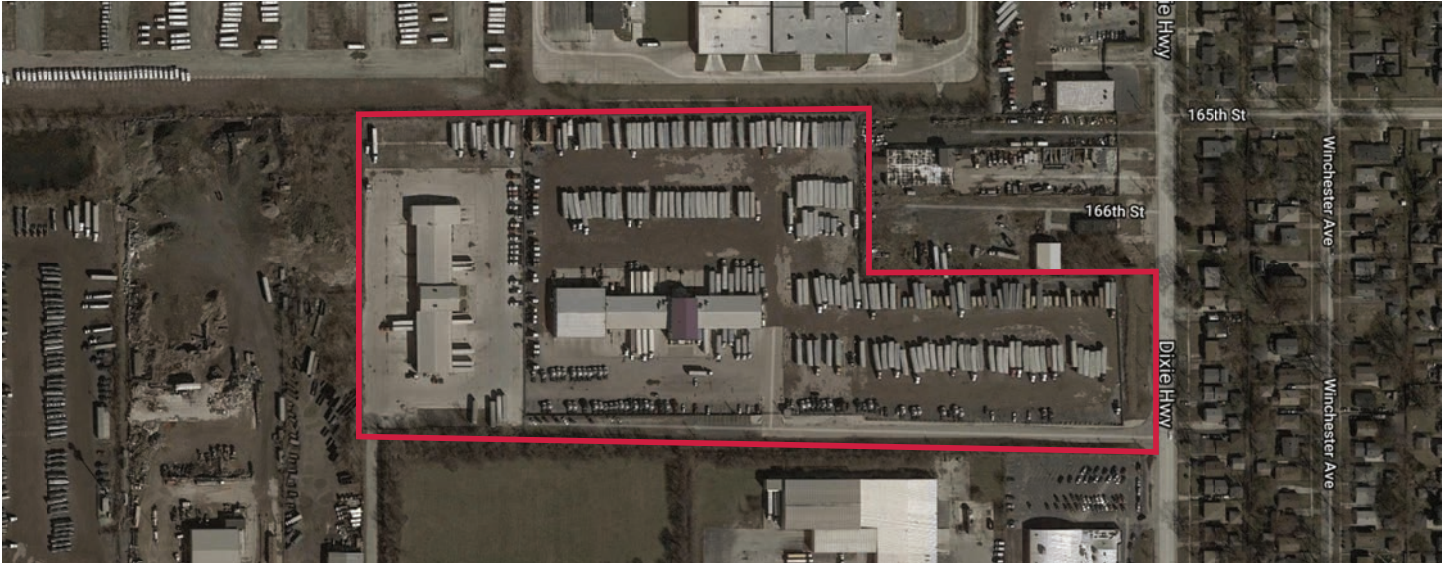
Tim McCahill
Principal
tmccahill@lee-associates.com
D 773.355.3044

Joe Feeny
Senior Associate
jfeeny@lee-associates.com
D 773.355.3039

All information furnished regarding property for sale, rental or financing is from sources deemed reliable, but no warranty or representation is made to the accuracy thereof and same is submitted to errors, omissions, change of price, rental or other conditions prior to sale, lease or financing or withdrawal without notice. No liability of any kind is to be imposed on the broker herein.

AVAILABLE

2200 W. 166TH ST & 16600 S. DIXIE HWY
MARKHAM, ILLINOIS



Tim McCahill
Principal
tmccahill@lee-associates.com
D 773.355.3044

Joe Feeny
Senior Associate
jfeeny@lee-associates.com
D 773.355.3039

All information furnished regarding property for sale, rental or financing is from sources deemed reliable, but no warranty or representation is made to the accuracy thereof and same is submitted to errors, omissions, change of price, rental or other conditions prior to sale, lease or financing or withdrawal without notice. No liability of any kind is to be imposed on the broker herein.