



9,200 SF Unit Available For Lease

1010 West Elizabeth Avenue, Linden, New Jersey



Close To Port Newark/Elizabeth, Routes 1 & 9, I-278, NJ Turnpike & Goethals Bridge to Staten Island, NY

For Additional Information Contact Exclusive Brokers

Jordan Metz, Senior Vice President 973.493.0385 | jmetz3@me.com

Eric Koons, Sales Associate | 908.410.7152 | ekoons@bussel.com

Bussel Realty Corp. | Licensed Real Estate Broker | 2 Ethel Road, Suite 202A, Edison, NJ 08817 | 732.287.3777 | Bussel.com

Information herein obtained from sources deemed reliable, but no guarantee of its accuracy is made by the Company. Subject to error, omission or withdrawal without notice.

BUILDING SPECIFICATIONS

- Available Unit: 9,200 SF
- Office Space: 2,500 SF
- Total Land: 1.03 Acres
- Ceilings: 14'
- Loading: 1 Drive-In
- Car Parking: 10 Spaces
- Sprinkler: Wet

LEASE RATE

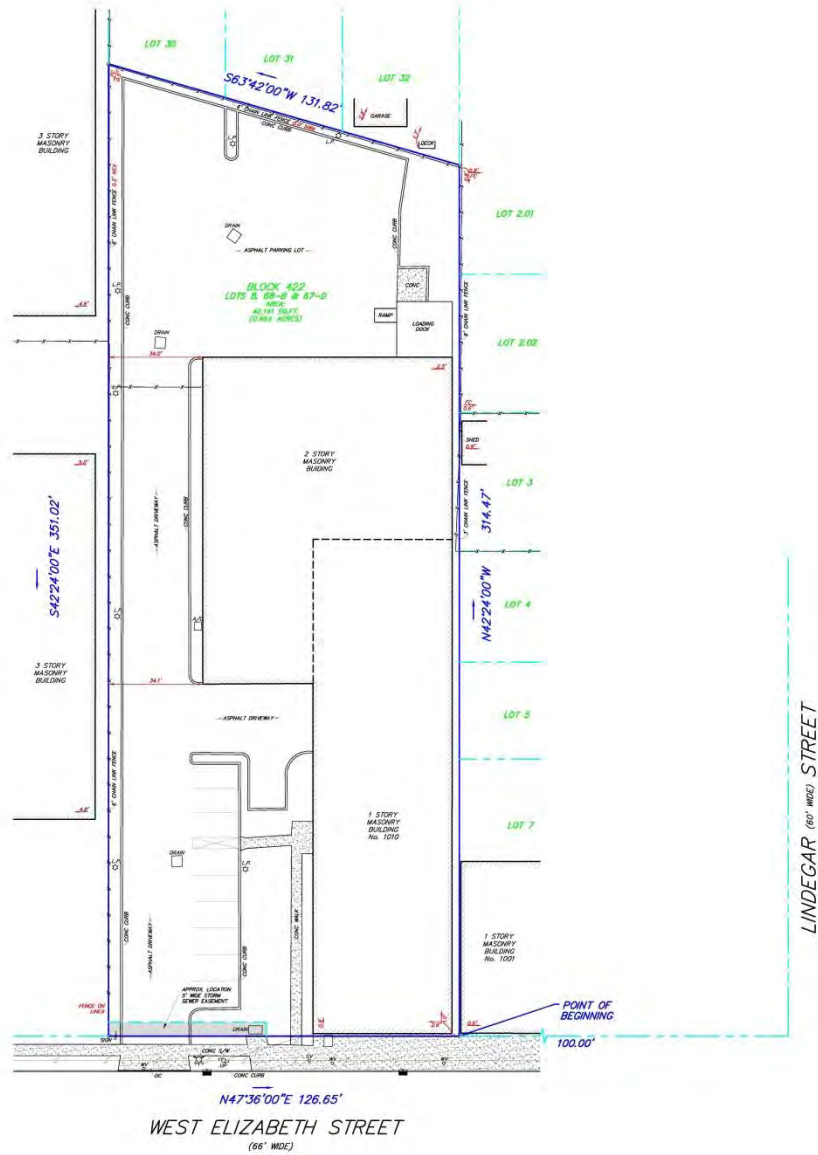
- Lease: \$10.75 PSF Net
- Taxes: \$2.26 PSF
- CAM: \$0.39 PSF
- Occupancy: January 1, 2021

PROPERTY HIGHLIGHTS

- Across the Street from Linden Train Station – Ancillary Retail Uses Permitted
- Near Routes 1 & 9, I-278 to Goethals Bridge (Staten Island, NY) and New Jersey Turnpike
- Close Proximity To:
 - Port Newark/Elizabeth
 - Newark Liberty International Airport
 - 5 Boroughs of New York City
 - Global Container Terminal & Greenville Yards in Bayonne



FLOOR PLAN – ENTIRE BUILDING



LOCATION MAP

