

the
BEAUBIEN
house

**HISTORIC COMMERCIAL
SPACE FOR LEASE**

— 5,224 Square Feet —

● — 553 East Jefferson Avenue, Detroit — ●

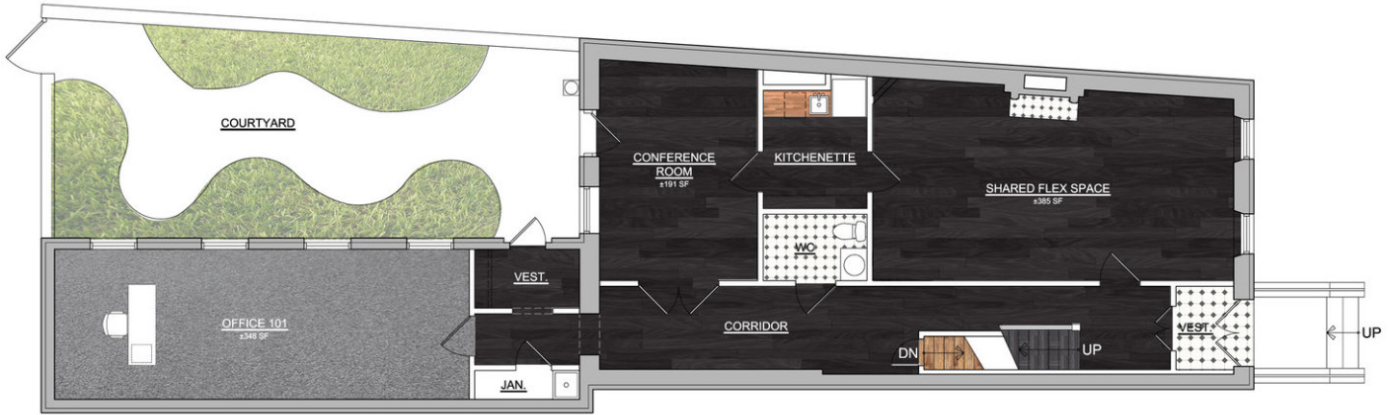


— AMENITIES —

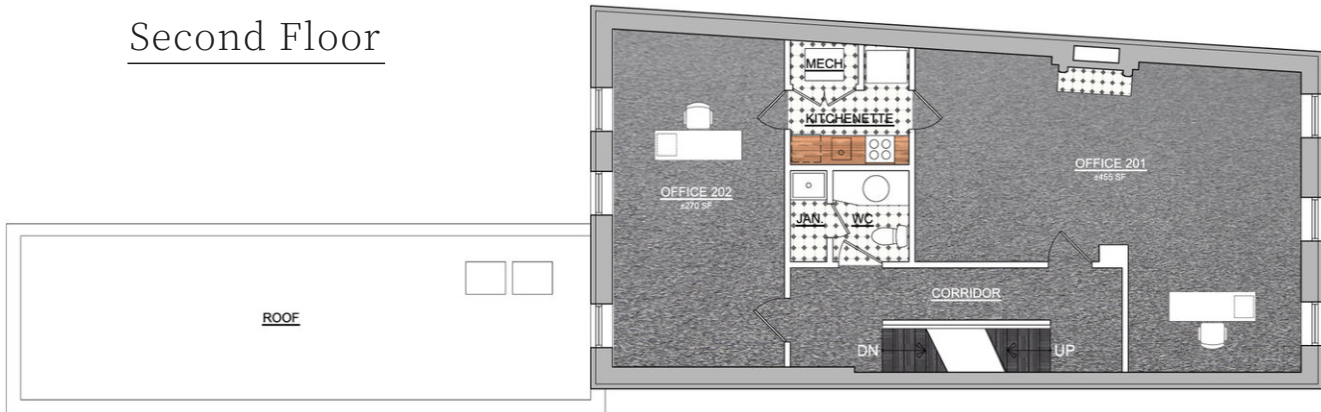
- Private outdoor courtyard
- Two kitchenettes
- Two large conference rooms
- Five private offices
- Several open work areas
- Parlour space for entertaining clients or working
- Parking in gated lot available for monthly fee
- Rocket Fiber Access

FLOOR PLANS

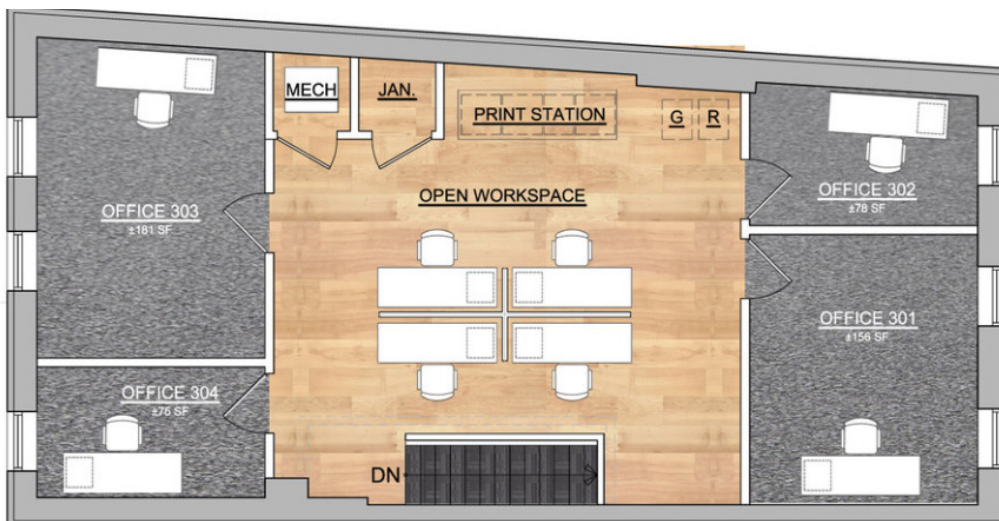
Ground Floor



Second Floor



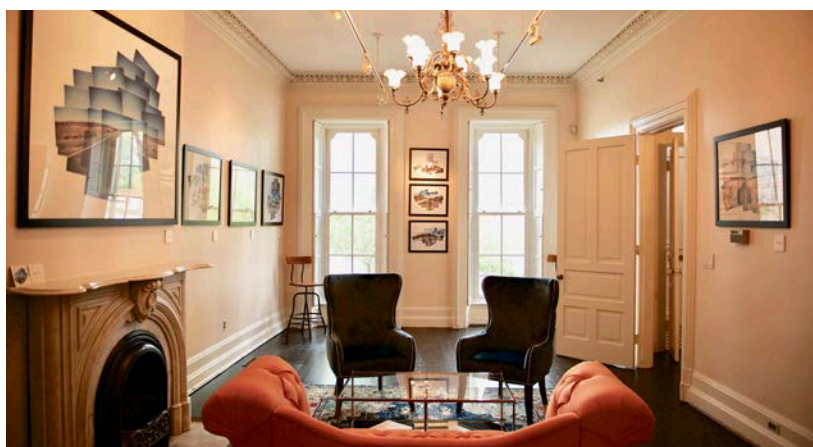
Third Floor



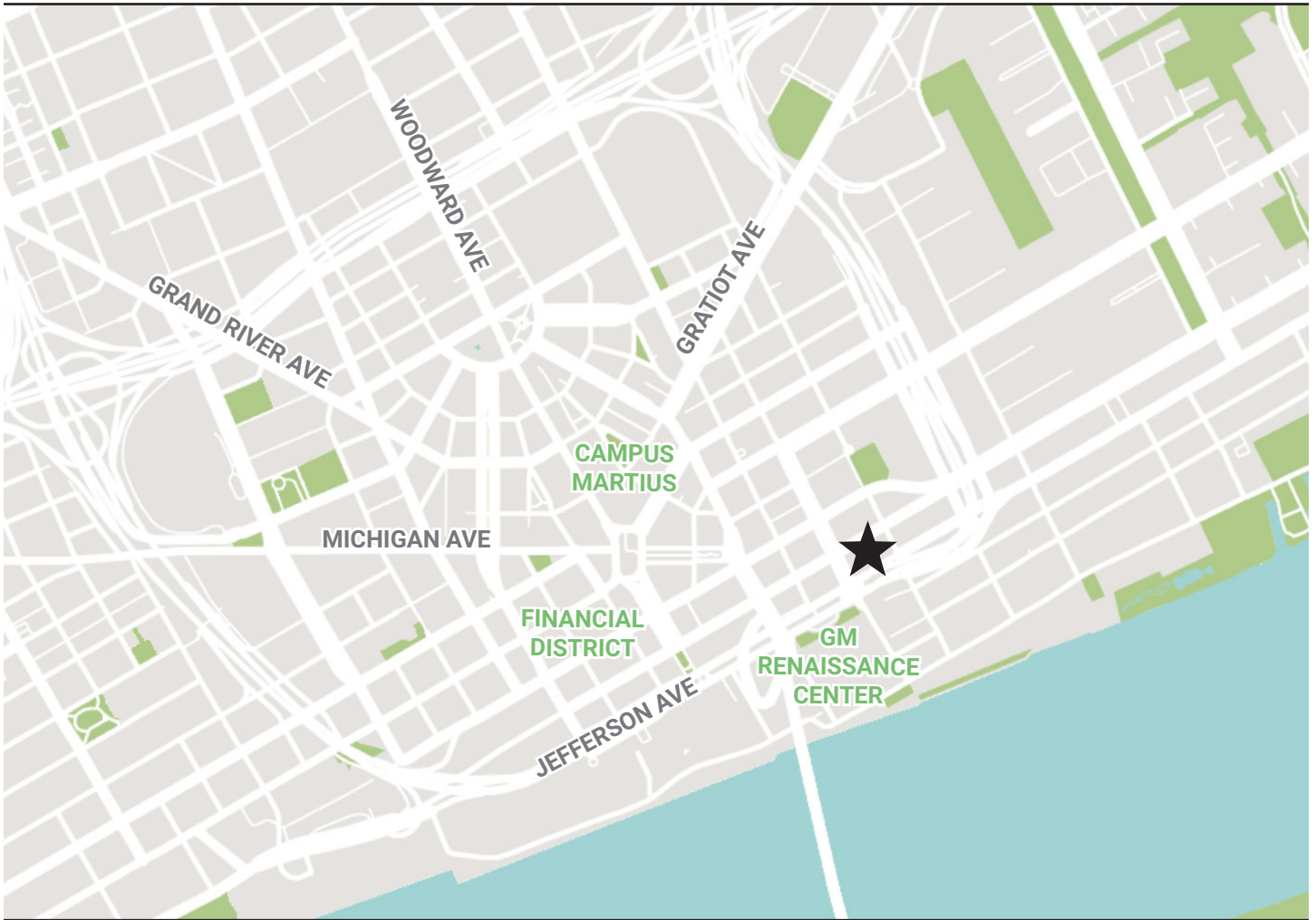
— PHOTOS —



— PHOTOS —



— CONTACT US —



DAN GALLAGHER

Avison Young
Associate
d: 313. 209. 4112
e: dan.gallagher@avisonyoung.com

MATTHEW BUSLEPP

Avison Young
Senior Associate
d: 313. 209. 4123
e: matt.buslepp@avisonyoung.com

SLOANE F. WALSH

Avison Young
Associate
d: 248. 227. 0182
e: sloane.walsh@avisonyoung.com

KYLE DARCY

Assemble Space
Broker, Founder
d: 310. 721. 8641
e: kyle@assemble.space