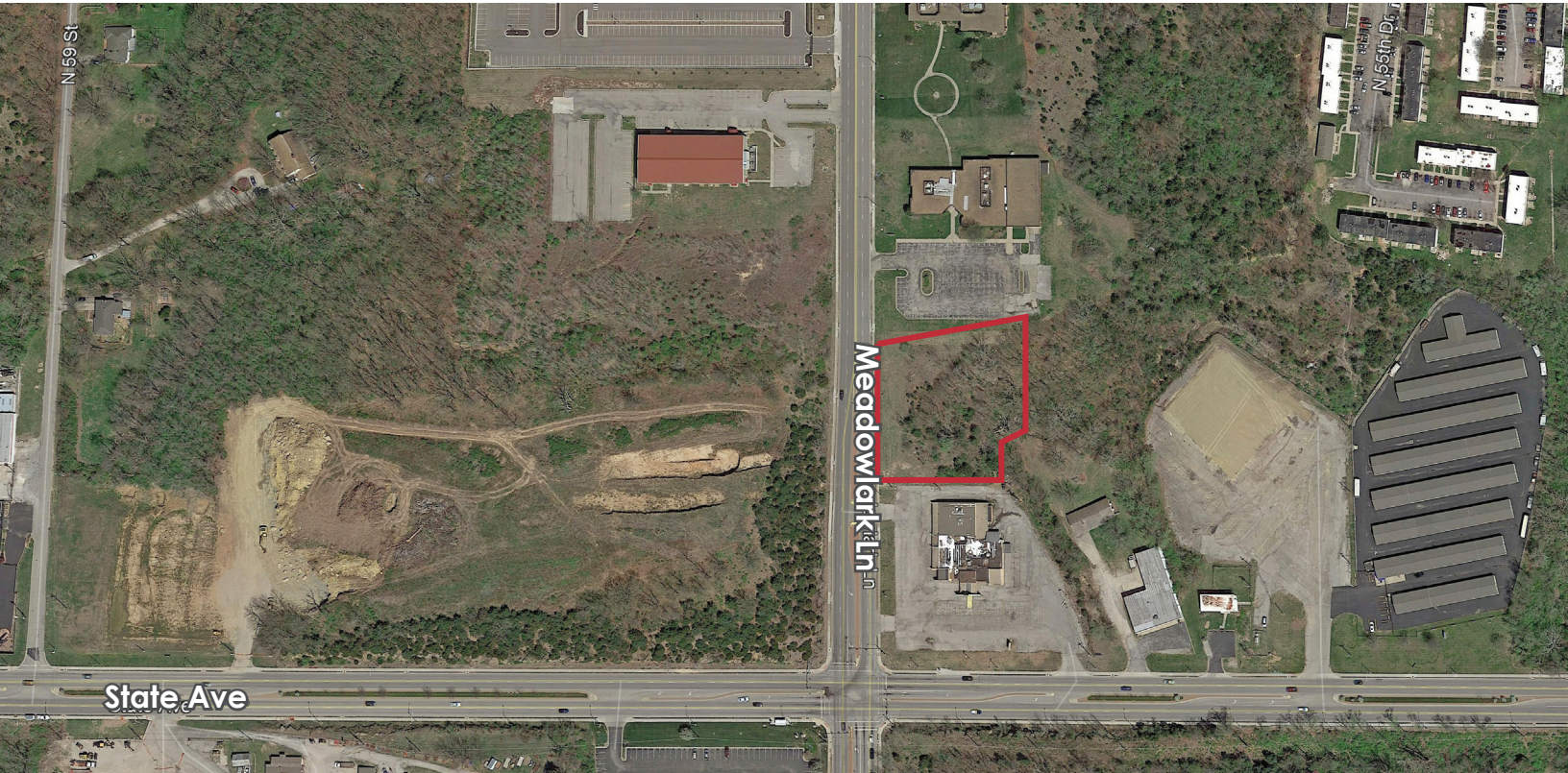


1215 MEADOWLARK LN

KANSAS CITY, KS 66101



HIGHLIGHTS

- 1.38 Acres
- Great Access to I-70
- Max Bus Line Stop
- CP-1 Zoning
- Active Investment Corridor

FOR SALE

\$100,000

DEMOGRAPHICS

	1 Mile	3 Mile	5 Mile
2018 POPULATION	5,376	52,257	121,593
2018 AVE HOUSEHOLD INCOME	\$38,764	\$41,813	40,829

Matt Watkins

Office: 913-266-5424

Mobile: 913-908-9447

Email: matt@reececommercial.com

The information above has been obtained from sources believed reliable. While we do not doubt its accuracy we have not verified it and make no guarantee, warranty or representation about it. It is your responsibility to independently confirm its accuracy and completeness. Any projections, opinions, assumptions, or estimates used are for example only and do not represent the current or future performance of the property. You and your advisors should conduct a careful, independent investigation of the property to determine to your satisfaction the suitability of the property for your needs.

© 2019