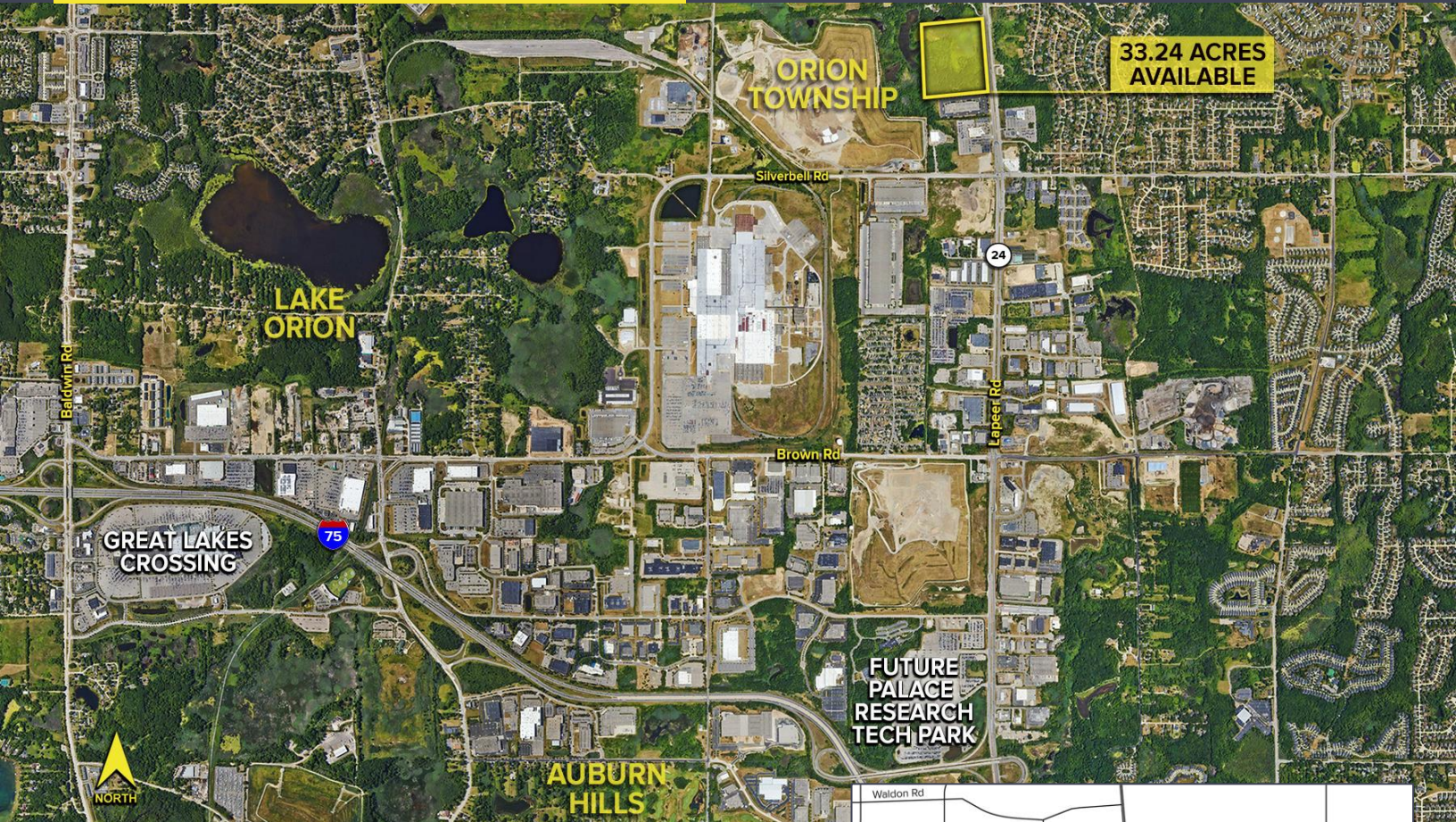


LAPEER ROAD ORION TWP., MICHIGAN

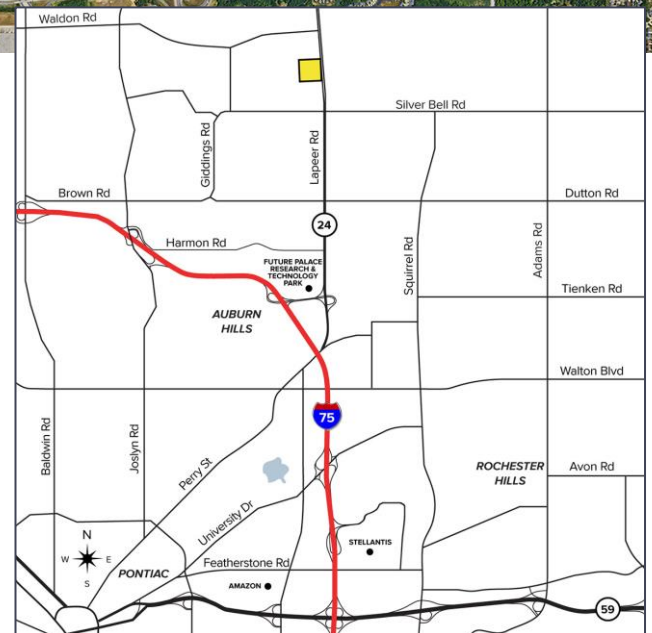
VACANT LAND FOR SALE 2.00 - 33.24 Acres Available



**SIGNATURE
ASSOCIATES**
KNOW SIGNATURE | KNOW RESULTS



- 2.00 - 33.24 acres available
- Natural wetland setting allowing for 17 +/- usable acres
- Zoned OP-2 for: industrial, medical, retail, research & development, office, and senior housing
- Allows for light industrial uses such as injection mold, machining, light assembly, mini storage, medical and senior housing
- Perfect for medical campus with Lapeer Road fronting retail or light industrial, R&D developments
- Minutes to GM Orion, CTC and all tiered suppliers In Auburn Hills and new Amazon Fulfillment Center in Pontiac
- Self storage is allowed in the zoning
- Sale Price: \$2,500,000



For more information, please contact:

KRIS PAWLOWSKI

(248) 359 3801

kpawlowski@signatureassociates.com

JOHN BOYD

(248) 948 0102

jboyd@signatureassociates.com

SIGNATURE ASSOCIATES

One Towne Square, Suite 1200

Southfield, MI 48076

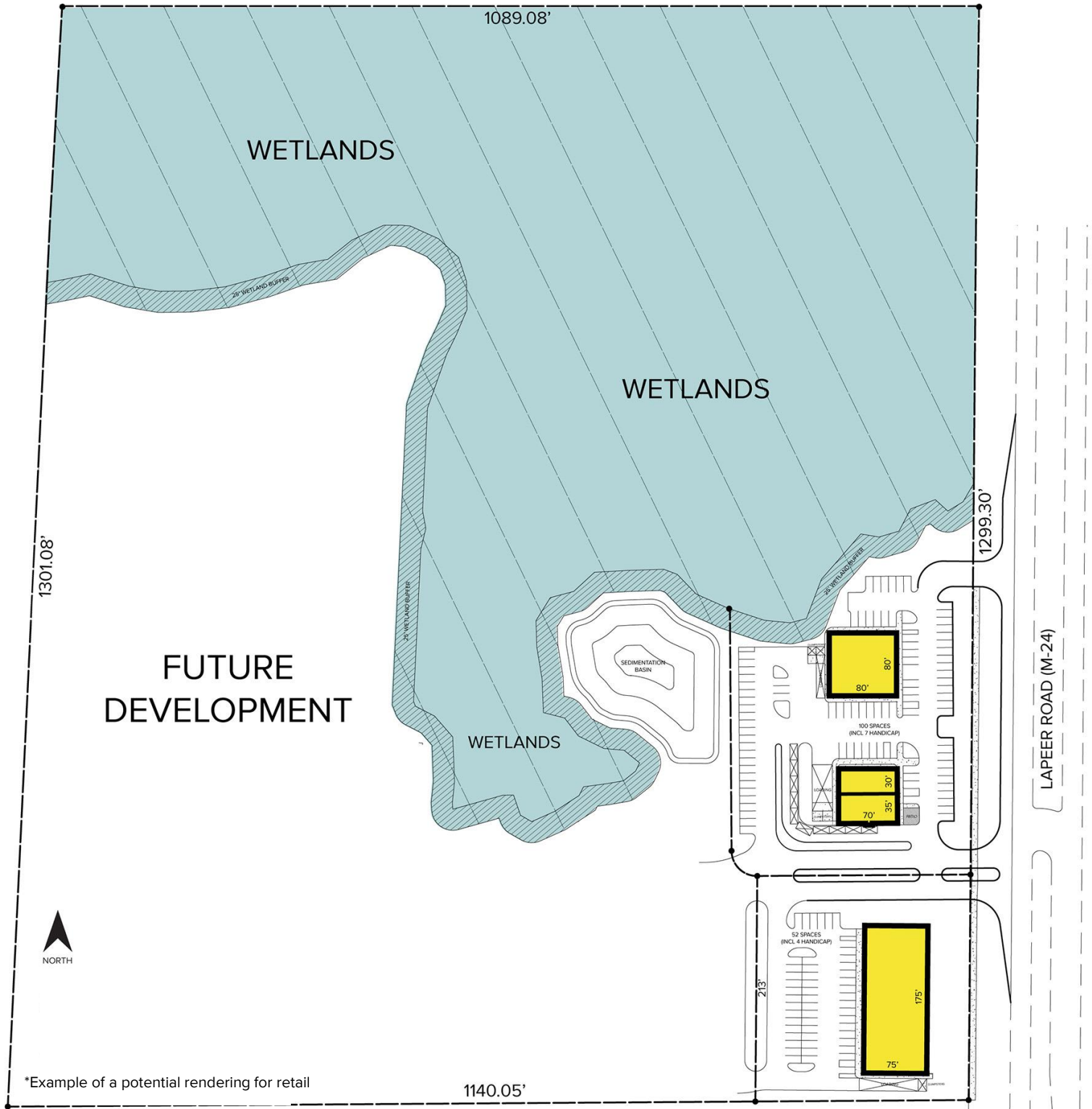
www.signatureassociates.com

Lapeer Road – Orion Twp., Michigan

Land For Sale

2.00 - 33.24
Acres
AVAILABLE

Site Plan



For more information, please contact:

KRIS PAWLOWSKI

(248) 359 3801

kpawlowski@signatureassociates.com

JOHN BOYD

(248) 948 0102

jboyd@signatureassociates.com

SIGNATURE ASSOCIATES

One Towne Square, Suite 1200

Southfield, MI 48076

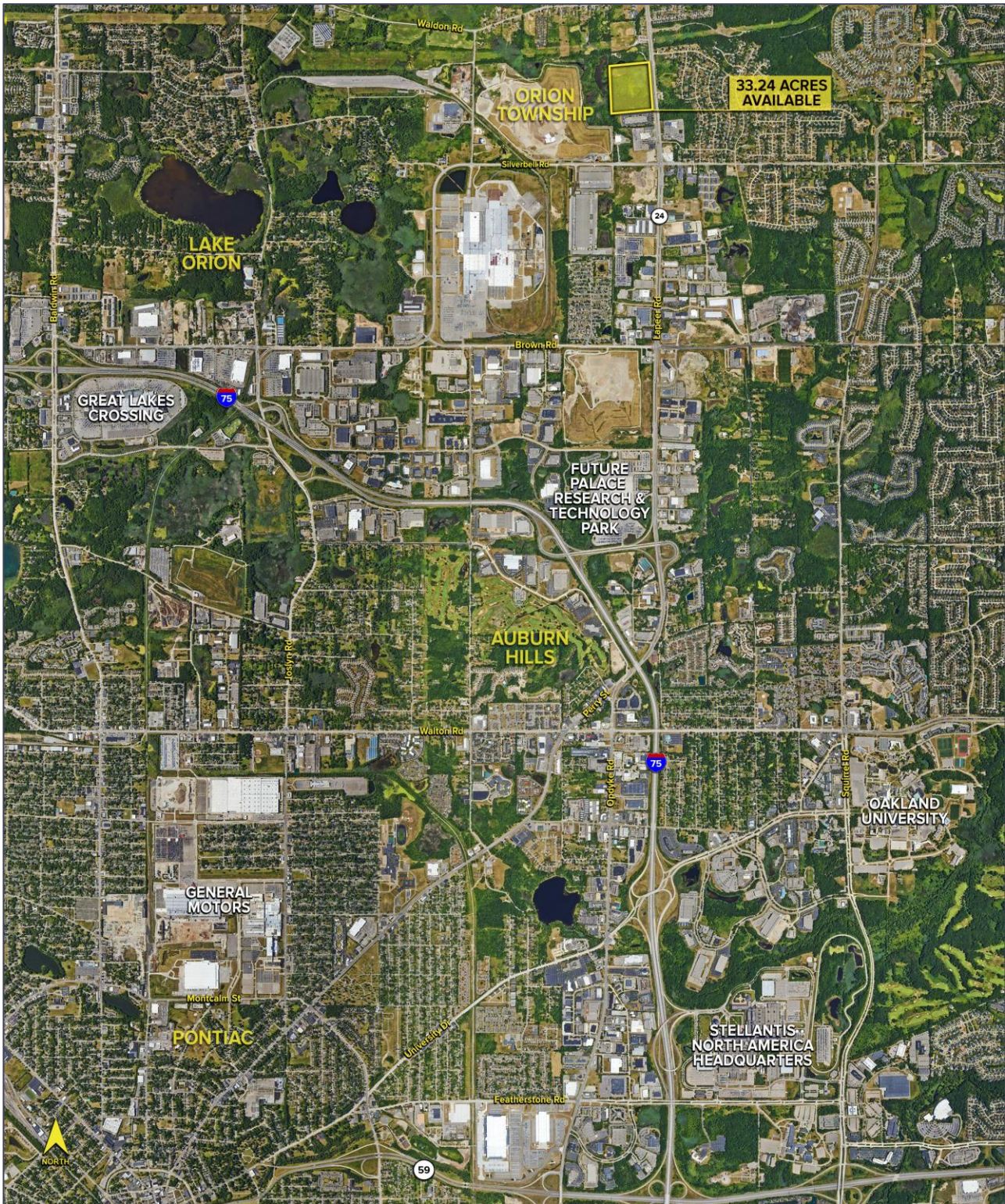
www.signatureassociates.com

Lapeer Road – Orion Twp., Michigan

Land For Sale

2.00 - 33.24
Acres
AVAILABLE

Aerial



For more information, please contact:

KRIS PAWLOWSKI

(248) 359 3801

kpawlowski@signatureassociates.com

JOHN BOYD

(248) 948 0102

jboyd@signatureassociates.com

SIGNATURE ASSOCIATES

One Towne Square, Suite 1200

Southfield, MI 48076

www.signatureassociates.com

Information is subject to verification and no liability for errors or omissions is assumed. Price is subject to change and listing withdrawal.