

## OFFICE CONDO FOR LEASE

# KINGSLEY CENTER - 1279 KINGSLEY AVE

1279 Kingsley Avenue, Orange Park, FL 32073



### PROPERTY FEATURES

- Professional Office Suites
- Great Location on Kingsley Avenue near the Orange Park Medical Center
- 1000 SF Available
- Modified Gross, No CAM, Plus Sales Tax
- Tenant Responsible for Electric and Data/Phone
- Water and Sewer Included
- 1233 Kingsley Ave. - 650 SF, \$850/month
- Units 104, 105, 109, 110, 111, 112, 113, 115, 117 - \$12 SF/YR



**KW COMMERCIAL**  
4465 U.S. Hwy 17,  
Suite 2  
Fleming Island, FL 32003

**SANDRA KAHLE, CCIM**  
Managing Director  
O: 904.541.0700  
C: 904.838.6446  
skahle@kahlecg.com

**CYNTHIA MCLAIN, CCIM**  
Broker Associate  
O: 904.541.0700  
C: 904.545.4195  
cmclain@kahlecg.com

**Kahle Commercial Group**

The information contained herein has been obtained from sources deemed reliable. While every reasonable effort has been made to ensure its accuracy, we cannot guarantee it. No responsibility is assumed for any inaccuracies. Readers are encouraged to consult their professional advisors prior to acting on any of the material contained herein.

Each Office Independently Owned and Operated [kwcommercial.com](http://kwcommercial.com)

## OFFICE CONDO FOR LEASE

# KINGSLEY CENTER - 1279 KINGSLEY AVE

1279 Kingsley Avenue, Orange Park, FL 32073



**KW COMMERCIAL**  
4465 U.S. Hwy 17,  
Suite 2  
Fleming Island, FL 32003

**SANDRA KAHLE, CCIM**  
Managing Director  
O: 904.541.0700  
C: 904.838.6446  
skahle@kahlecg.com

**CYNTHIA MCLAIN, CCIM**  
Broker Associate  
O: 904.541.0700  
C: 904.545.4195  
cmclain@kahlecg.com

**Kahle Commercial Group**

The information contained herein has been obtained from sources deemed reliable. While every reasonable effort has been made to ensure its accuracy, we cannot guarantee it. No responsibility is assumed for any inaccuracies. Readers are encouraged to consult their professional advisors prior to acting on any of the material contained herein.

Each Office Independently Owned and Operated [kwcommercial.com](http://kwcommercial.com)

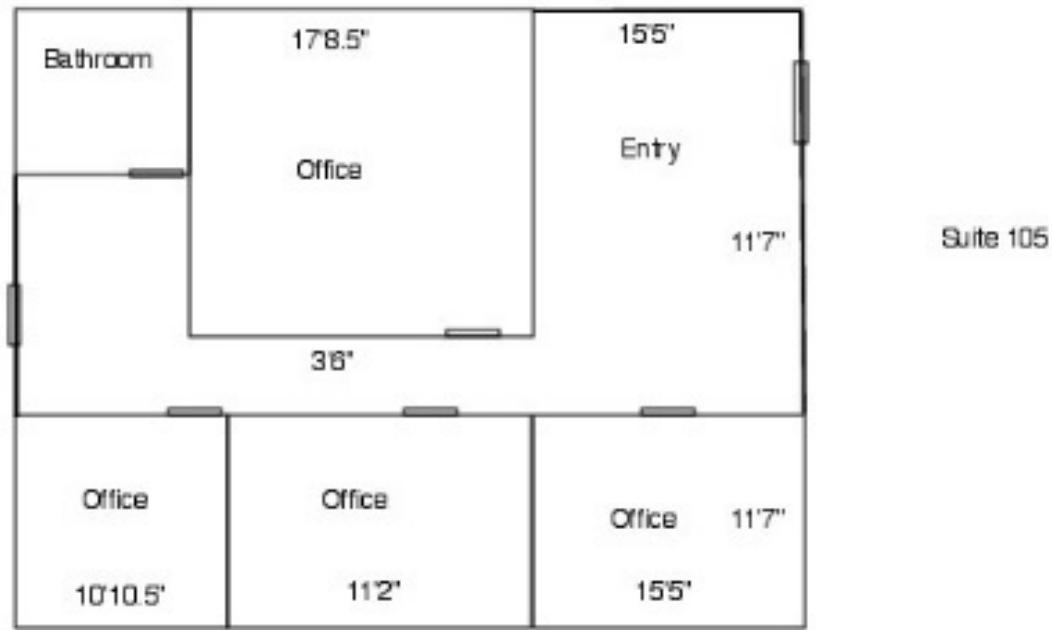
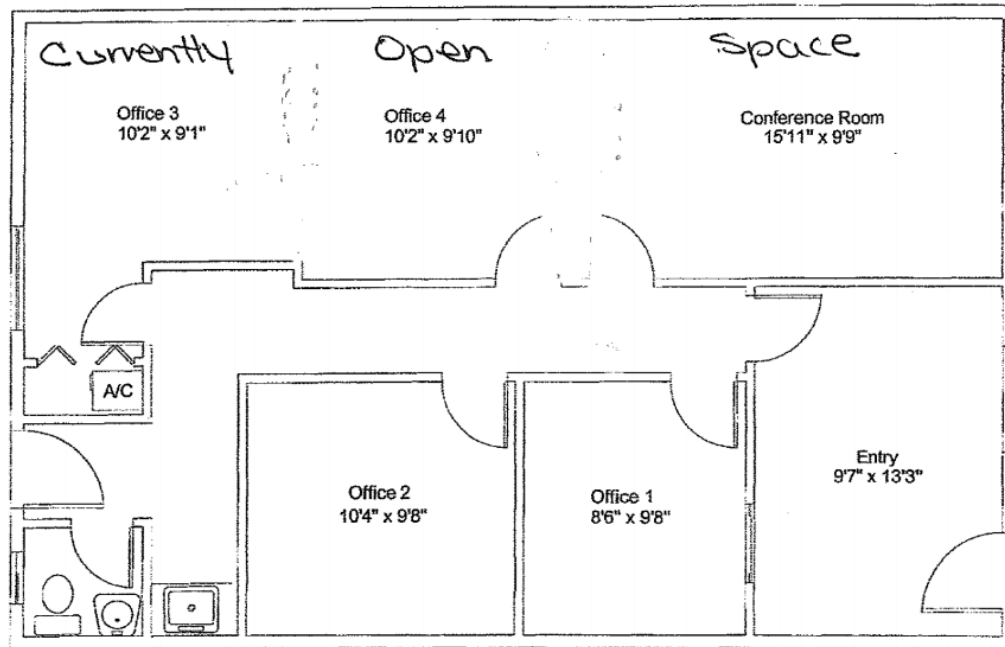
## OFFICE CONDO FOR LEASE

# KINGSLEY CENTER - 1279 KINGSLEY AVE

1279 Kingsley Avenue, Orange Park, FL 32073



104



**KW COMMERCIAL**  
4465 U.S. Hwy 17,  
Suite 2  
Fleming Island, FL 32003

**SANDRA KAHLE, CCIM**  
Managing Director  
O: 904.541.0700  
C: 904.838.6446  
skahle@kahlecg.com

**CYNTHIA MCLAIN, CCIM**  
Broker Associate  
O: 904.541.0700  
C: 904.545.4195  
cmclain@kahlecg.com

Kahle Commercial Group

The information contained herein has been obtained from sources deemed reliable. While every reasonable effort has been made to ensure its accuracy, we cannot guarantee it. No responsibility is assumed for any inaccuracies. Readers are encouraged to consult their professional advisors prior to acting on any of the material contained herein.

Each Office Independently Owned and Operated [kwcommercial.com](http://kwcommercial.com)



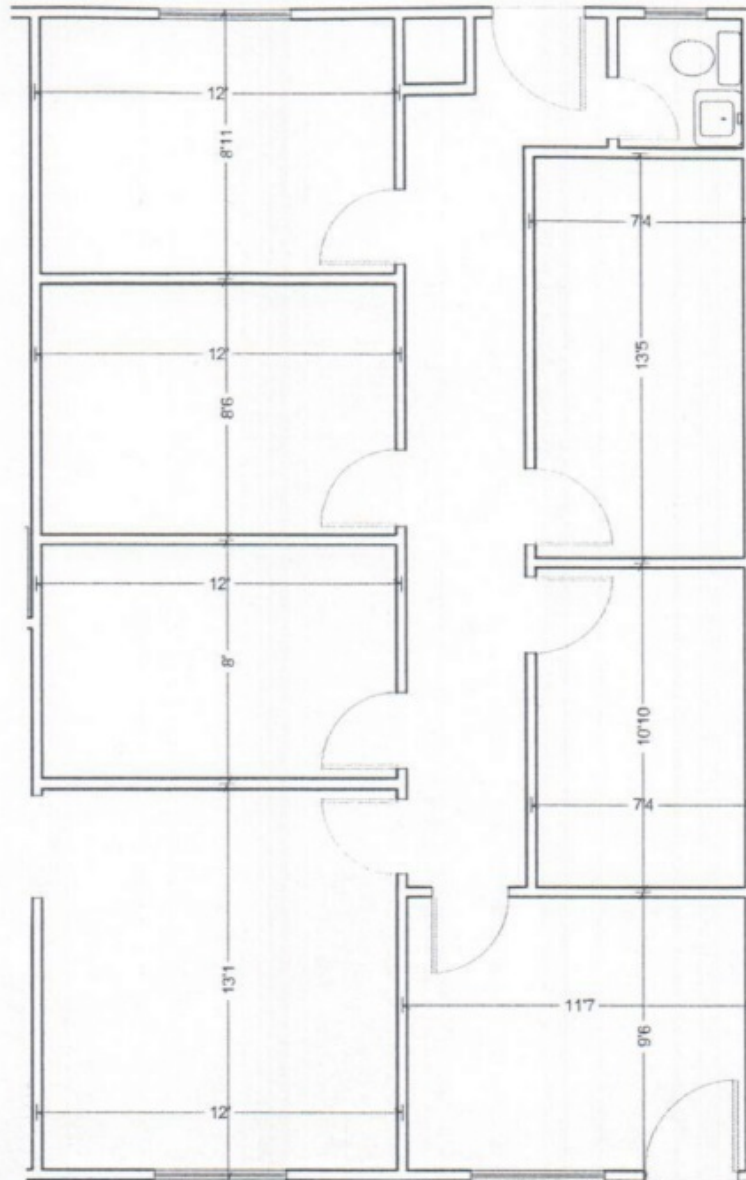
## OFFICE CONDO FOR LEASE

# KINGSLEY CENTER - 1279 KINGSLEY AVE

1279 Kingsley Avenue, Orange Park, FL 32073



109



**KW COMMERCIAL**  
4465 U.S. Hwy 17,  
Suite 2  
Fleming Island, FL 32003

**SANDRA KAHLE, CCIM**  
Managing Director  
O: 904.541.0700  
C: 904.838.6446  
skahle@kahlecg.com

**CYNTHIA MCLAIN, CCIM**  
Broker Associate  
O: 904.541.0700  
C: 904.545.4195  
cmclain@kahlecg.com

**Kahle Commercial Group**

The information contained herein has been obtained from sources deemed reliable. While every reasonable effort has been made to ensure its accuracy, we cannot guarantee it. No responsibility is assumed for any inaccuracies. Readers are encouraged to consult their professional advisors prior to acting on any of the material contained herein.

Each Office Independently Owned and Operated [kwcommercial.com](http://kwcommercial.com)

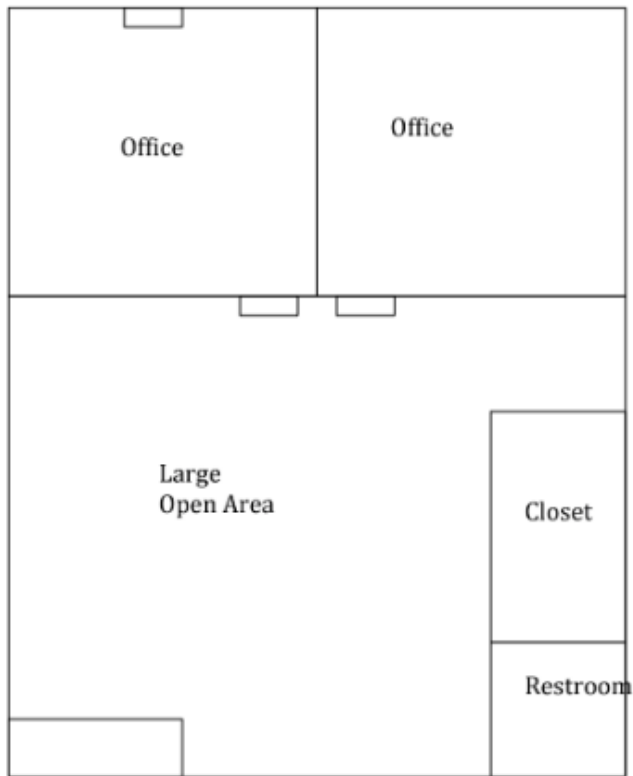
## OFFICE CONDO FOR LEASE

# KINGSLEY CENTER - 1279 KINGSLEY AVE

1279 Kingsley Avenue, Orange Park, FL 32073



Suite 110



**KW COMMERCIAL**  
4465 U.S. Hwy 17,  
Suite 2  
Fleming Island, FL 32003

**SANDRA KAHLE, CCIM**  
Managing Director  
O: 904.541.0700  
C: 904.838.6446  
skahle@kahlecg.com

**CYNTHIA MCLAIN, CCIM**  
Broker Associate  
O: 904.541.0700  
C: 904.545.4195  
cmclain@kahlecg.com

Kahle Commercial Group

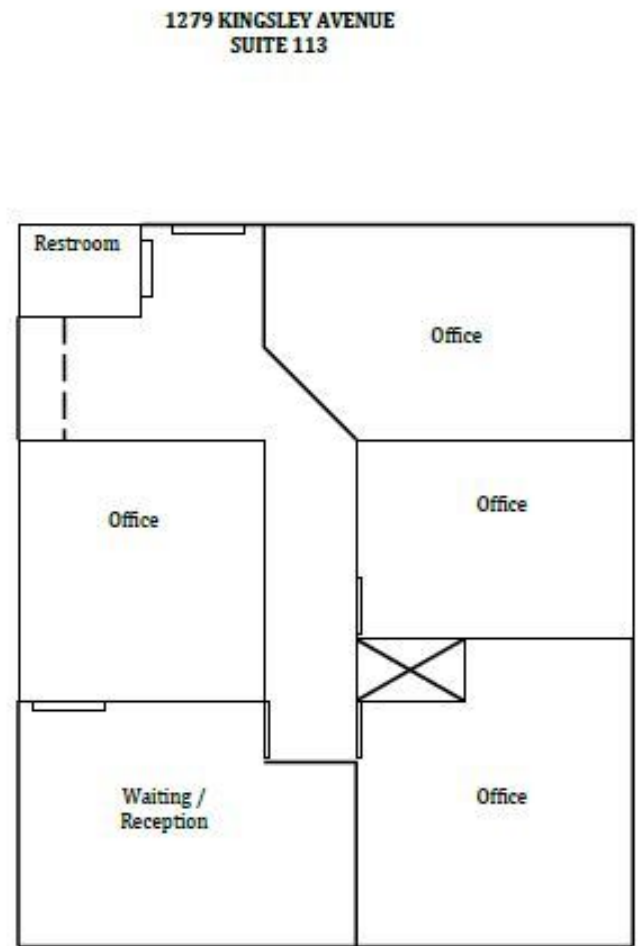
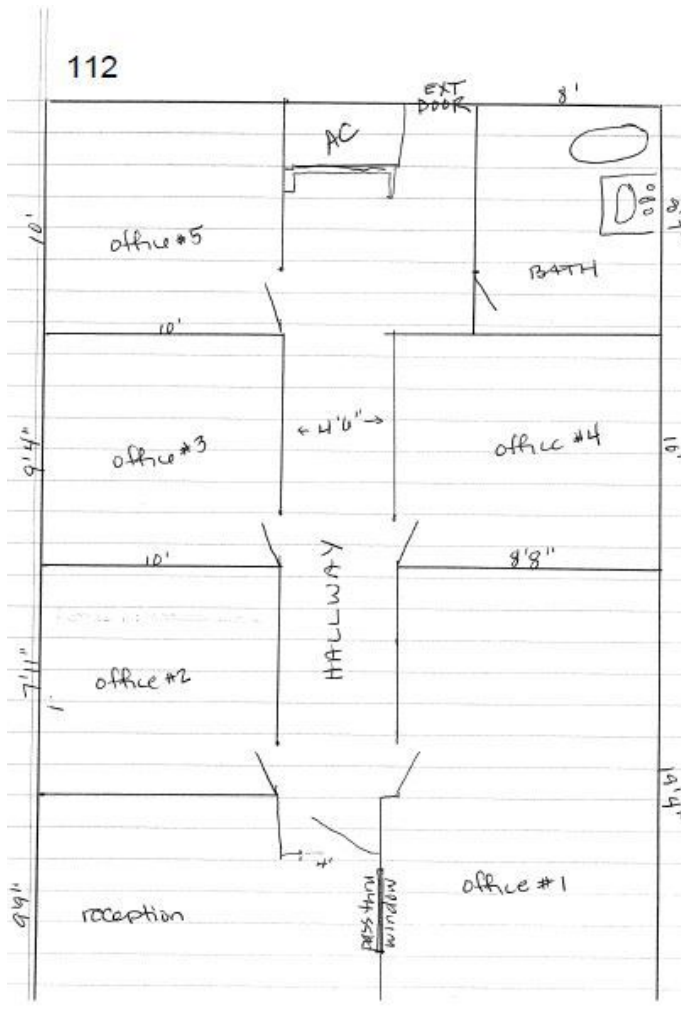
The information contained herein has been obtained from sources deemed reliable. While every reasonable effort has been made to ensure its accuracy, we cannot guarantee it. No responsibility is assumed for any inaccuracies. Readers are encouraged to consult their professional advisors prior to acting on any of the material contained herein.

Each Office Independently Owned and Operated [kwcommercial.com](http://kwcommercial.com)

## OFFICE CONDO FOR LEASE

# KINGSLEY CENTER - 1279 KINGSLEY AVE

1279 Kingsley Avenue, Orange Park, FL 32073



**KW COMMERCIAL**  
4465 U.S. Hwy 17,  
Suite 2  
Fleming Island, FL 32003

**SANDRA KAHLE, CCIM**  
Managing Director  
O: 904.541.0700  
C: 904.838.6446  
skahle@kahlecg.com

**CYNTHIA MCLAIN, CCIM**  
Broker Associate  
O: 904.541.0700  
C: 904.545.4195  
cmclain@kahlecg.com

Kahle Commercial Group

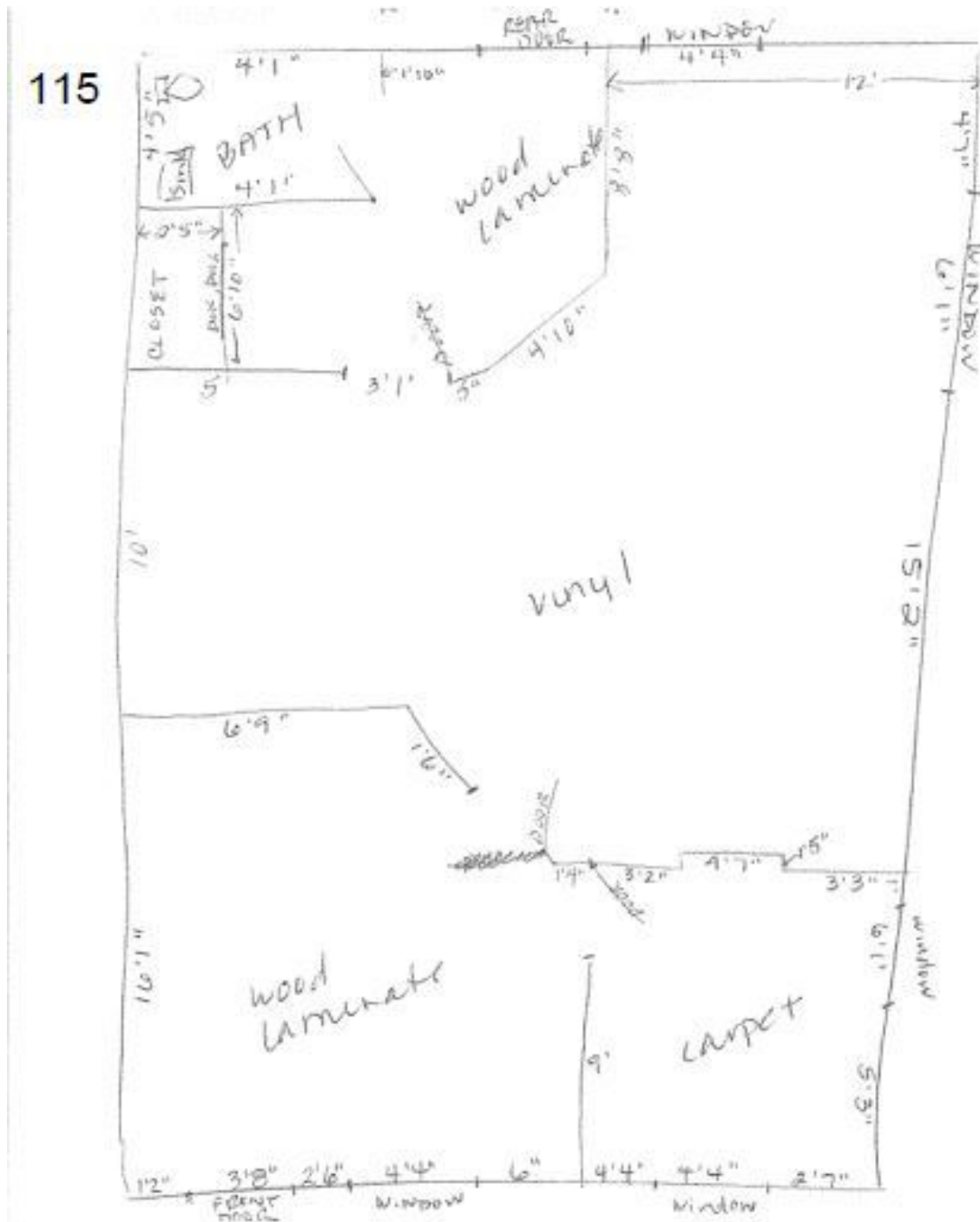
The information contained herein has been obtained from sources deemed reliable. While every reasonable effort has been made to ensure its accuracy, we cannot guarantee it. No responsibility is assumed for any inaccuracies. Readers are encouraged to consult their professional advisors prior to acting on any of the material contained herein.

Each Office Independently Owned and Operated [kwcommercial.com](http://kwcommercial.com)

## OFFICE CONDO FOR LEASE

# KINGSLEY CENTER - 1279 KINGSLEY AVE

1279 Kingsley Avenue, Orange Park, FL 32073



**KW COMMERCIAL**  
4465 U.S. Hwy 17,  
Suite 2  
Fleming Island, FL 32003

**SANDRA KAHLE, CCIM**  
Managing Director  
O: 904.541.0700  
C: 904.838.6446  
skahle@kahlecg.com

**CYNTHIA MCLAIN, CCIM**  
Broker Associate  
O: 904.541.0700  
C: 904.545.4195  
cmclain@kahlecg.com

Kahle Commercial Group

The information contained herein has been obtained from sources deemed reliable. While every reasonable effort has been made to ensure its accuracy, we cannot guarantee it. No responsibility is assumed for any inaccuracies. Readers are encouraged to consult their professional advisors prior to acting on any of the material contained herein.

Each Office Independently Owned and Operated [kwcommercial.com](http://kwcommercial.com)

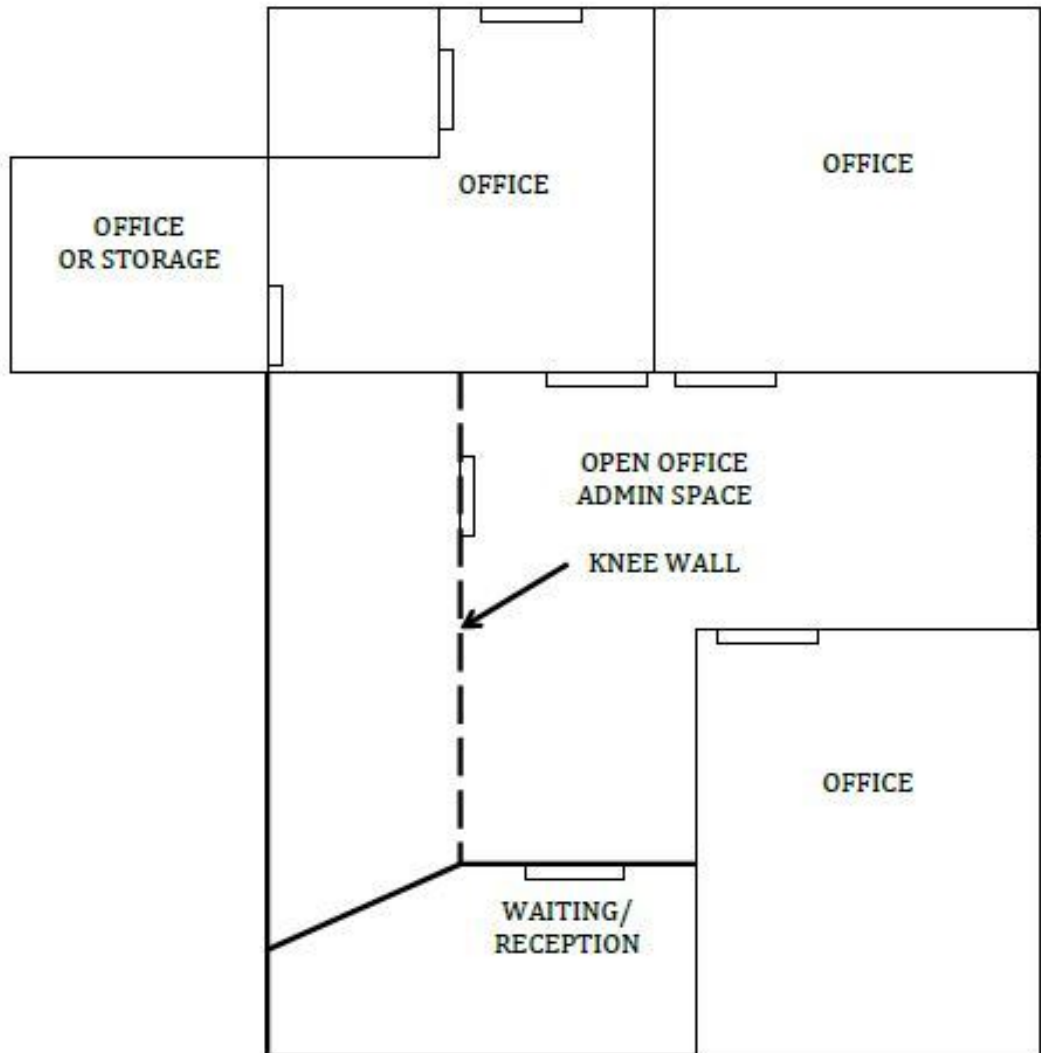
## OFFICE CONDO FOR LEASE

# KINGSLEY CENTER - 1279 KINGSLEY AVE

1279 Kingsley Avenue, Orange Park, FL 32073



### 1279 KINGSLEY AVE SUITE 117



**KW COMMERCIAL**  
4465 U.S. Hwy 17,  
Suite 2  
Fleming Island, FL 32003

**SANDRA KAHLE, CCIM**  
Managing Director  
O: 904.541.0700  
C: 904.838.6446  
skahle@kahlecg.com

**CYNTHIA MCLAIN, CCIM**  
Broker Associate  
O: 904.541.0700  
C: 904.545.4195  
cmclain@kahlecg.com

**Kahle Commercial Group**

The information contained herein has been obtained from sources deemed reliable. While every reasonable effort has been made to ensure its accuracy, we cannot guarantee it. No responsibility is assumed for any inaccuracies. Readers are encouraged to consult their professional advisors prior to acting on any of the material contained herein.

Each Office Independently Owned and Operated [kwcommercial.com](http://kwcommercial.com)



# KINGSLEY CENTER - 1279 KINGSLEY AVE

1279 Kingsley Avenue, Orange Park, FL 32073



**KW COMMERCIAL**  
4465 U.S. Hwy 17,  
Suite 2  
Fleming Island, FL 32003

**SANDRA KAHLE, CCIM**  
Managing Director  
O: 904.541.0700  
C: 904.838.6446  
skahle@kahlecg.com

**CYNTHIA MCLAIN, CCIM**  
Broker Associate  
O: 904.541.0700  
C: 904.545.4195  
cmclain@kahlecg.com

**Kahle Commercial Group**

The information contained herein has been obtained from sources deemed reliable. While every reasonable effort has been made to ensure its accuracy, we cannot guarantee it. No responsibility is assumed for any inaccuracies. Readers are encouraged to consult their professional advisors prior to acting on any of the material contained herein.

Each Office Independently Owned and Operated [kwcommercial.com](http://kwcommercial.com)