

# Prime HUB Office Space

## 391 East 149<sup>th</sup> Street

### Bronx, NY 10455



#### Size

650 –15,000 Square Feet

#### Rent

Upon Request

#### Building Features

- Private Lobby
- ADA Accessibility
- 3 Newly renovated Elevators
- Front Desk Security
- Move in Condition
- Full floors available
- Wraparound Windows allow for plenty of natural light

#### Notes

- Located at one of the busiest intersections in the Bronx, the corner of 149<sup>th</sup> Street and 3<sup>rd</sup> Avenue
- Pedestrian Count- 23,697 daily
- \*\*\*BROKERS PROTECTED\*\*\*

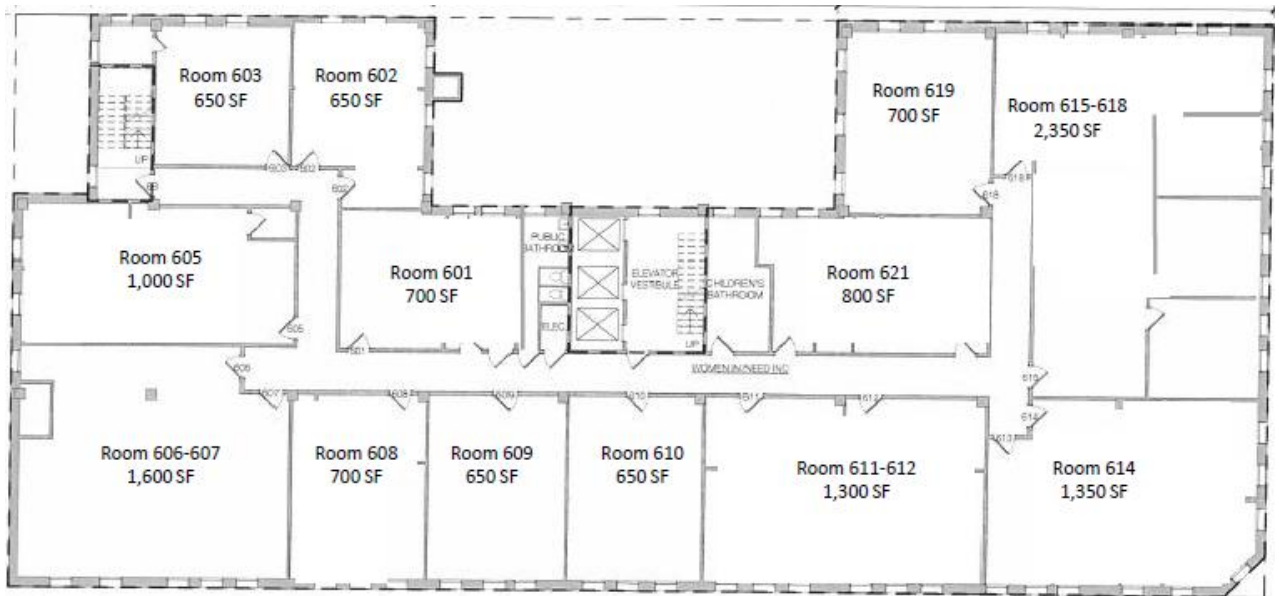
#### Transportation

##### Buses

- Bx1/2 bus- 38,600 riders/day
- Bx55 bus- 13,400 riders/day
- Bx15 bus- 12,000 riders/day
- Bx4/4A bus- 15,300 riders/day

##### Subway

- 3<sup>rd</sup> Avenue – 149<sup>th</sup> Street Station
- 2 and 5 Trains
- 25,161 weekday riders
- 7,763,151 riders in 2014



**For More Information, Please Contact:**

Isadore Betesh: Isadore@MilestoneEq.com 917-882-5495  
 Marc Betesh: Marc@MilestoneEq.com 917-882-5690



**MILESTONE**  
EQUITIES