



MEDICAL/OFFICE DEVELOPMENT LAND

FOR SALE / MOTIVATED SELLER - SALE PRICE LOWERED TO \$2,999,000

±21.5 ACRES MEDICAL/OFFICE LAND ALONG ROUTE 195 (ROUTE 138)

2905 Hurley Pond Road, Wall, NJ 07719

For More Information, Contact

SCOTT G. SAVASTANO

Director of Capital Markets
sgsavastano@blauberg.com
973.379.6644 x147

JOHN LONGO

Senior Sales Associate
jlongo@blauberg.com
973.379.6644 x129

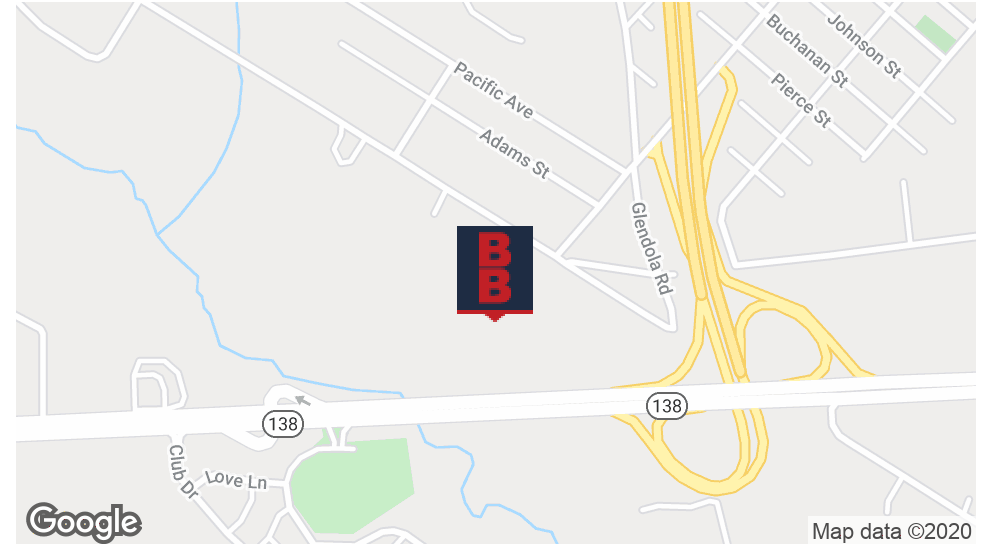


830 Morris Turnpike, Suite 201, Short Hills, NJ 07078

www.blauberg.com

±21.5 ACRES MEDICAL/OFFICE DEVELOPMENT LAND ALONG ROUTE 195 (ROUTE 138)

2905 Hurley Pond Road, Wall, NJ 07719



PROPERTY DESCRIPTION

±21.5 Acres Medical/Office Park Development

LOCATION DESCRIPTION

Minutes from Garden State Parkway Exit 98, and Route 18
Under 4 Miles from Jersey Shore Medical Center

OFFERING SUMMARY

Sale Price:	\$2,999,000
Lot Size:	21.5 Acres

PROPERTY HIGHLIGHTS

- Property is located within the desirable Office Park 2 (OP-2) Zone
- Curb cuts are directly on 195 (Route 138)
- 1,200 Feet Frontage Along Route 138

OFFICE PARK 2 ZONE INCLUDES:

Office / Medical / Financial / Research, Sports Recreation, Hotels*, Adult/Child Day Care, Health Clubs, Restaurants, Schools, Contractor Space*
Flex / Industrial Use Possible

*Conditional Use

For More Information, Contact

SCOTT G. SAVASTANO

Director of Capital Markets
sgsavastano@blauberg.com
973.379.6644 x147

JOHN LONGO

Senior Sales Associate
jlongo@blauberg.com
973.379.6644 x129

830 Morris Turnpike
Suite 201
Short Hills, NJ 07078

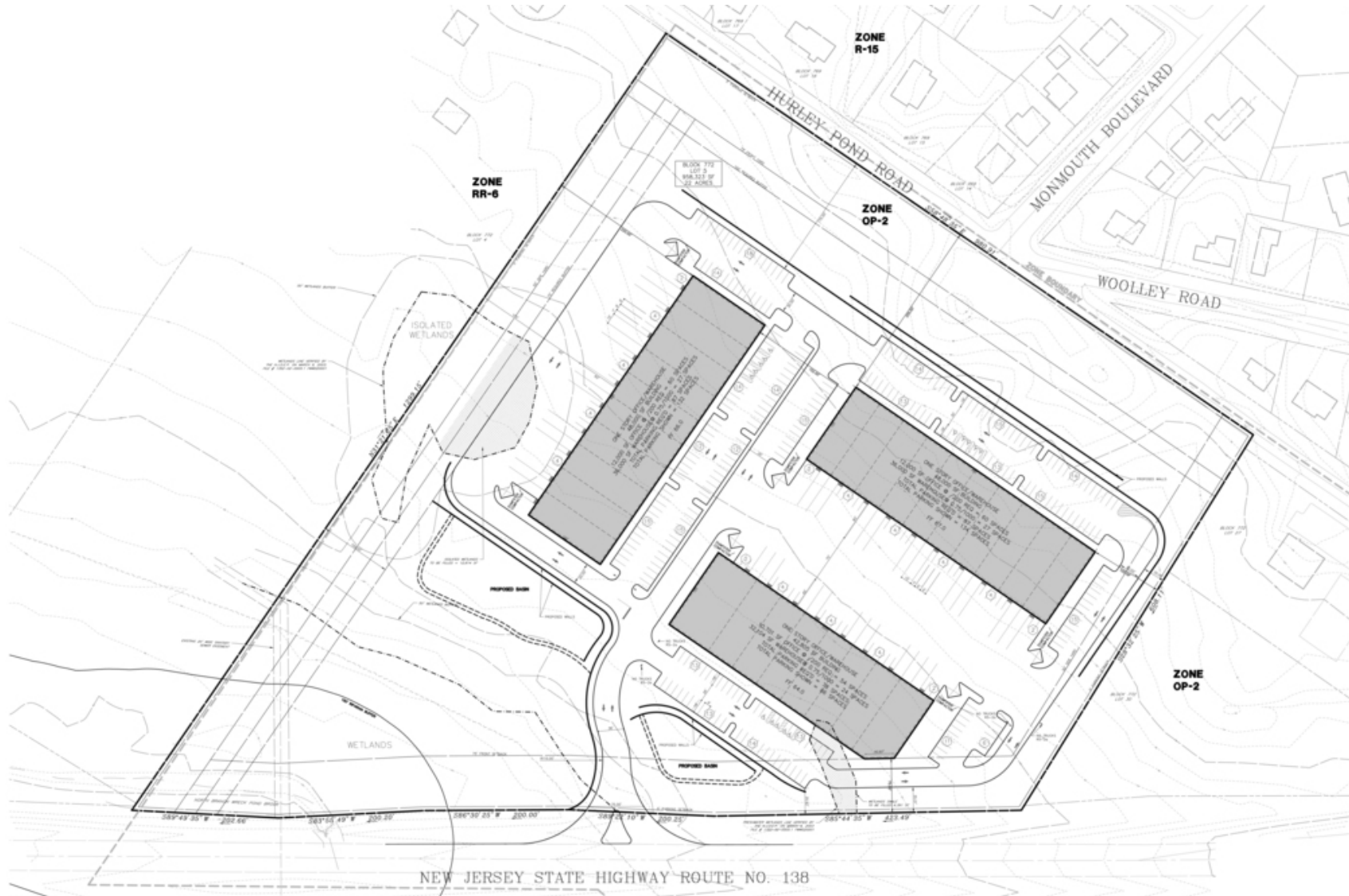
www.blauberg.com



The information contained herein has been obtained from sources considered to be reliable, but no guarantee of its accuracy is made by this company. In addition, no representation is made respecting zoning, condition of title, dimensions, or any matters of a legal or environmental nature. Such matters should be referred to legal counsel for determination. Terms and conditions are subject to change without prior notice. Subject to errors and omissions.

±21.5 ACRES VACANT LAND ALONG ROUTE 195 (ROUTE 138)

2905 Hurley Pond Road, Wall, NJ 07719



For More Information, Contact
SCOTT G. SAVASTANO
Director of Capital Markets
sgsavastano@blauberg.com
973.379.6644 x147

JOHN LONGO
Senior Sales Associate
jlongo@blauberg.com
973.379.6644 x129

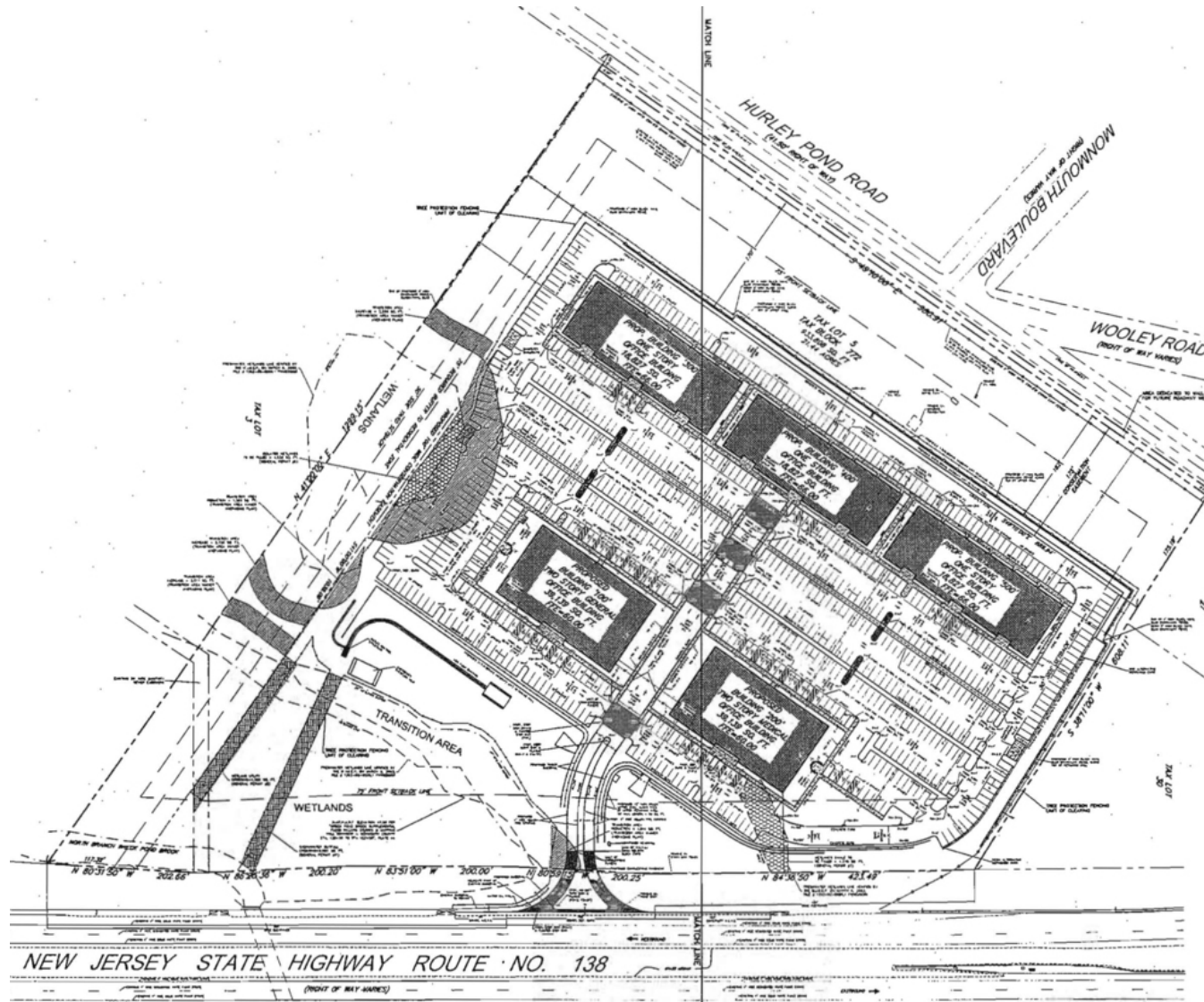
830 Morris Turnpike
Suite 201
Short Hills, NJ 07078
www.blauberg.com



The information contained herein has been obtained from sources considered to be reliable, but no guarantee of its accuracy is made by this company. In addition, no representation is made respecting zoning, condition of title, dimensions, or any matters of a legal or environmental nature. Such matters should be referred to legal counsel for determination. Terms and conditions are subject to change without prior notice. Subject to errors and omissions.

±21.5 ACRES VACANT LAND ALONG ROUTE 195 (ROUTE 138)

2905 Hurley Pond Road, Wall, NJ 07719



For More Information, Contact

SCOTT G. SAVASTANO

Director of Capital Markets

sgsavastano@blauberg.com

973.379.6644 x147

JOHN LONGO

Senior Sales Associate

jlongo@blauberg.com

973.379.6644 x129

830 Morris Turnpike
Suite 201
Short Hills, NJ 07078

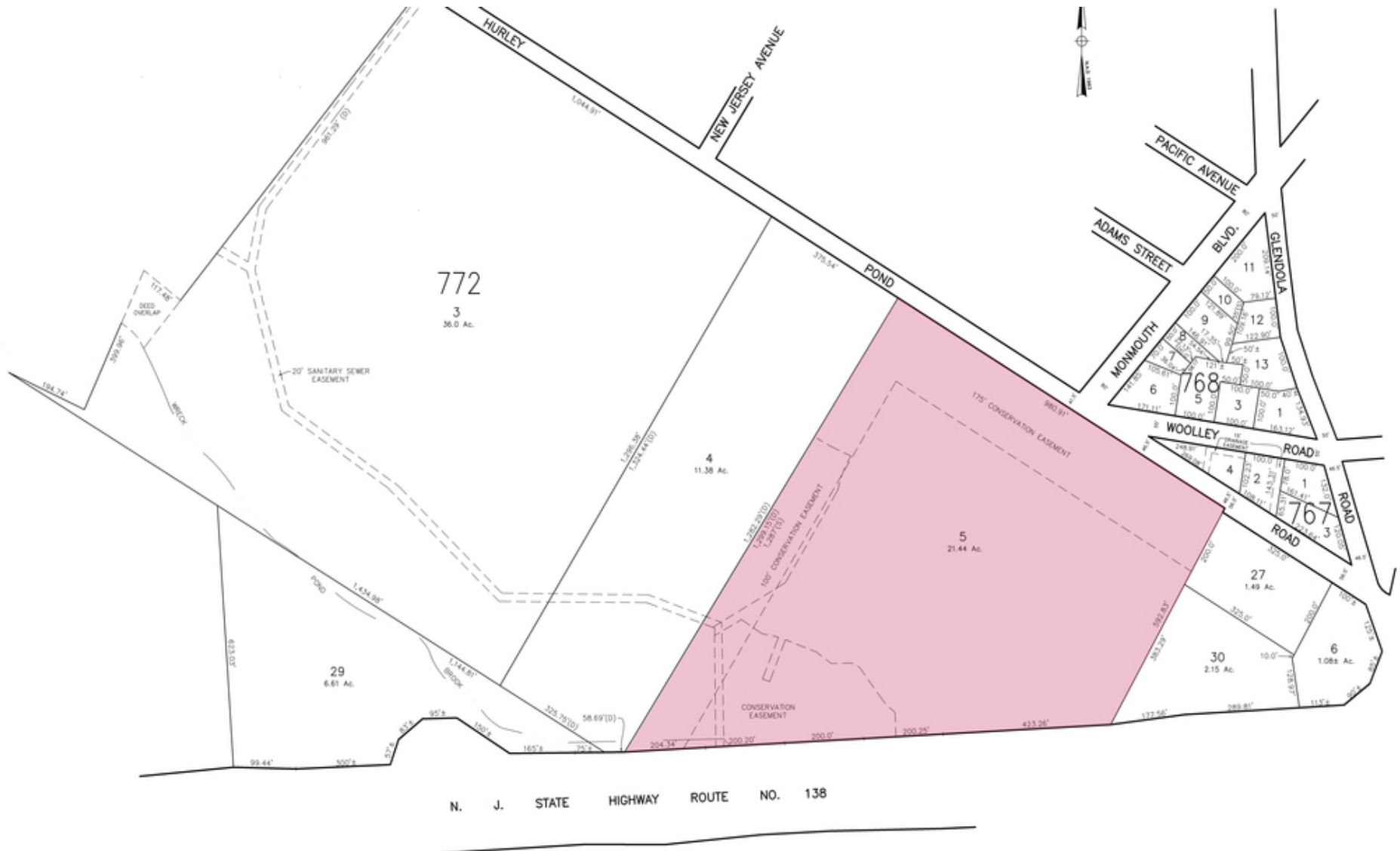
www.blauberg.com



The information contained herein has been obtained from sources considered to be reliable, but no guarantee of its accuracy is made by this company. In addition, no representation is made respecting zoning, condition of title, dimensions, or any matters of a legal or environmental nature. Such matters should be referred to legal counsel for determination. Terms and conditions are subject to change without prior notice. Subject to errors and omissions.

±21.5 ACRES MEDICAL/OFFICE DEVELOPMENT LAND ALONG ROUTE 195 (ROUTE 138)

2905 Hurley Pond Road, Wall, NJ 07719



For More Information, Contact
SCOTT G. SAVASTANO
 Director of Capital Markets
 sgsavastano@blauberg.com
 973.379.6644 x147

JOHN LONGO
 Senior Sales Associate
 jlongo@blauberg.com
 973.379.6644 x129

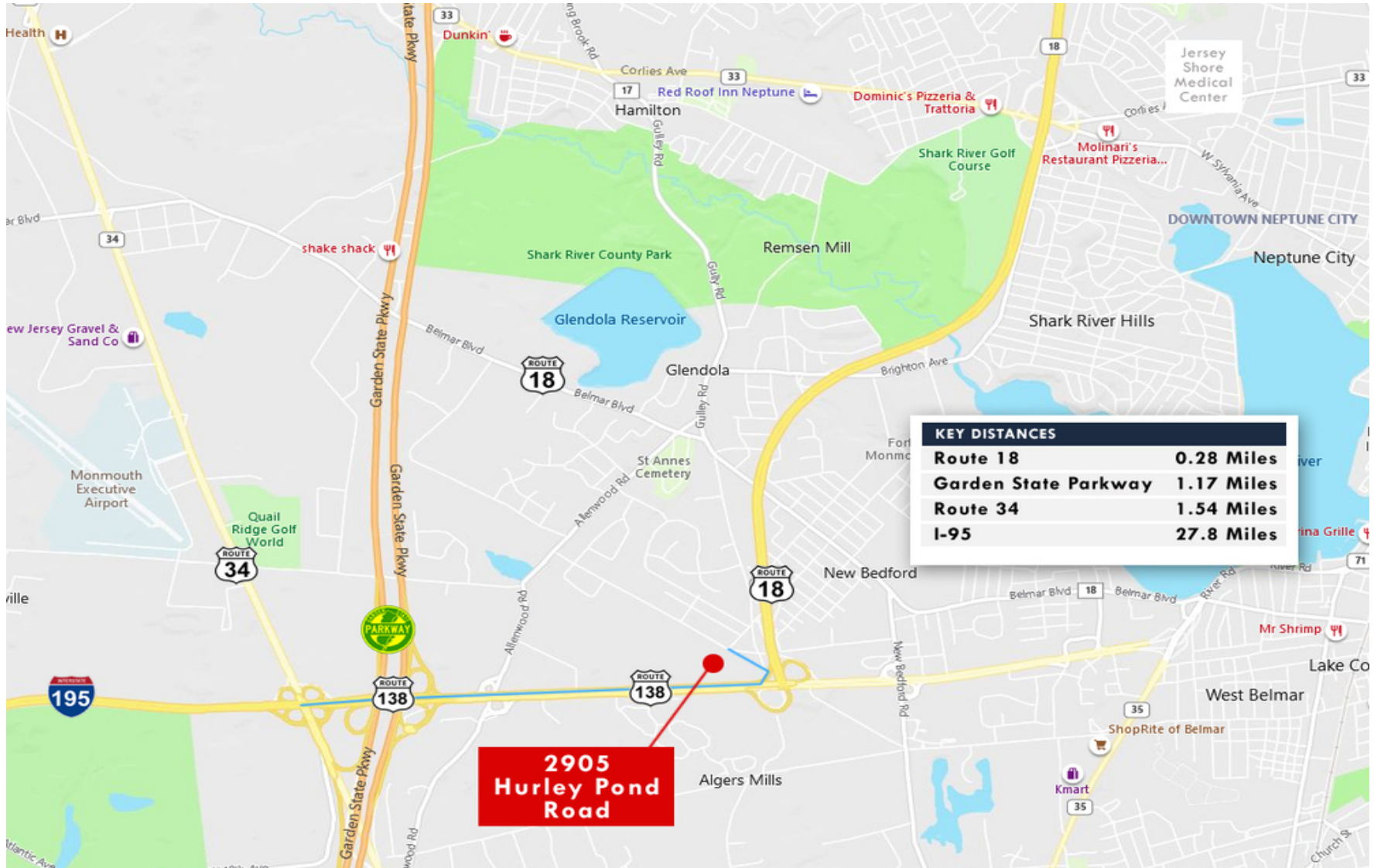
830 Morris Turnpike
 Suite 201
 Short Hills, NJ 07078
www.blauberg.com



The information contained herein has been obtained from sources considered to be reliable, but no guarantee of its accuracy is made by this company. In addition, no representation is made respecting zoning, condition of title, dimensions, or any matters of a legal or environmental nature. Such matters should be referred to legal counsel for determination. Terms and conditions are subject to change without prior notice. Subject to errors and omissions.

±21.5 ACRES MEDICAL/OFFICE DEVELOPMENT LAND ALONG ROUTE 195 (ROUTE 138)

2905 Hurley Pond Road, Wall, NJ 07719



For More Information, Contact

SCOTT G. SAVASTANO

Director of Capital Markets
 sgsavastano@blauberg.com
 973.379.6644 x147

JOHN LONGO

Senior Sales Associate
 jlongo@blauberg.com
 973.379.6644 x129

830 Morris Turnpike
 Suite 201
 Short Hills, NJ 07078

www.blauberg.com



The information contained herein has been obtained from sources considered to be reliable, but no guarantee of its accuracy is made by this company. In addition, no representation is made respecting zoning, condition of title, dimensions, or any matters of a legal or environmental nature. Such matters should be referred to legal counsel for determination. Terms and conditions are subject to change without prior notice. Subject to errors and omissions.

±21.5 ACRES MEDICAL/OFFICE DEVELOPMENT LAND ALONG ROUTE 195 (ROUTE 138)

2905 Hurley Pond Road, Wall, NJ 07719



SCOTT G. SAVASTANO

Director of Capital Markets

973.464.3800

sgsavastano@blauberg.com



JOHN LONGO

Senior Sales Associate

908.803.1876

jlongo@blauberg.com

For More Information, Contact

SCOTT G. SAVASTANO

Director of Capital Markets

sgsavastano@blauberg.com

973.379.6644 x147

JOHN LONGO

Senior Sales Associate

jlongo@blauberg.com

973.379.6644 x129

830 Morris Turnpike
Suite 201
Short Hills, NJ 07078

www.blauberg.com



The information contained herein has been obtained from sources considered to be reliable, but no guarantee of its accuracy is made by this company. In addition, no representation is made respecting zoning, condition of title, dimensions, or any matters of a legal or environmental nature. Such matters should be referred to legal counsel for determination. Terms and conditions are subject to change without prior notice. Subject to errors and omissions.