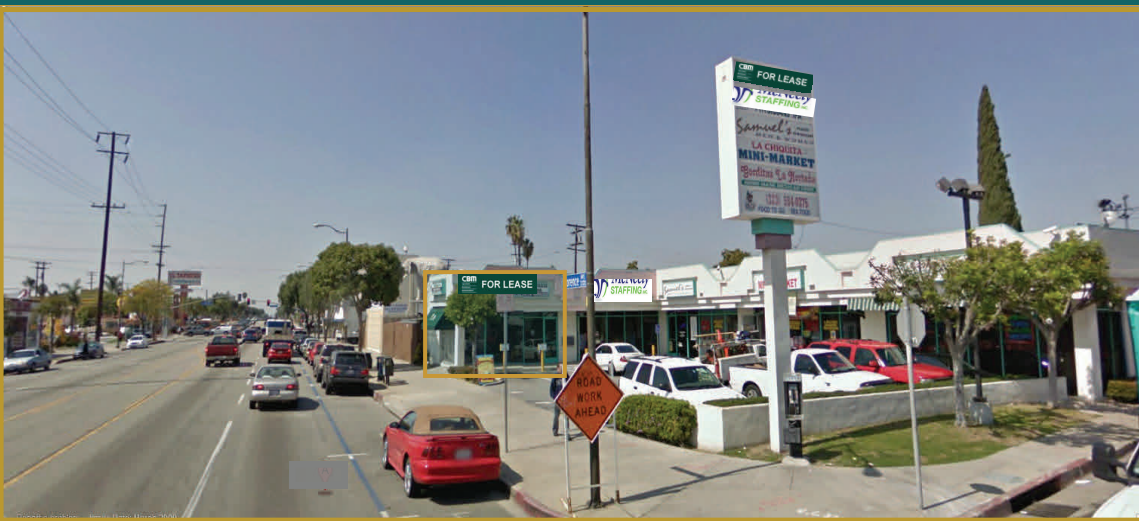


new listings



HUNTINGTON PARK RETAIL SPACE —FOR LEASE

At the Intersection of Florence Ave & Newell St

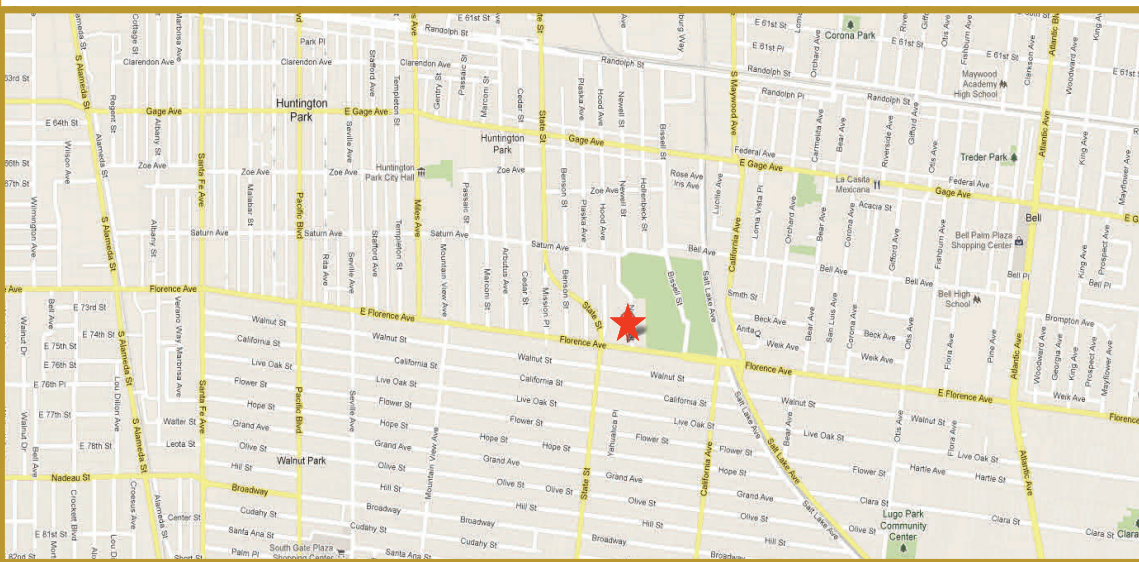
FEATURES

- Approx. 650 Sq. Endcap Retail spaces Available .
- Signage Available
- Very Busy Shopping Center
- Excellent Curb Appeal
- Parking Available.
- Street Exposure

AREA AMENITIES

- Heavy Car & Foot Traffic
- Approx. 50,000 Cars Per Day.
- Dense Population Demographics
- Population: 1 Mile Radius 67,000
- HH Income 1(mile) \$52,000.
- Surrounded by successful National Tenants

**3303 E Florence Ave
Huntington Park ,CA 90255**



CONTACT..

Alex Shabani x218
CA Real Estate Lic # 01352902

Leasing Agent
(310) 575-1517
(310) 575-1147 Fax
Alex@cbmi.com

1517 S. Sepulveda Blvd.
Los Angeles, CA 90025
17030 Ventura Blvd, #200
Encino, CA 91316

Additional Photos

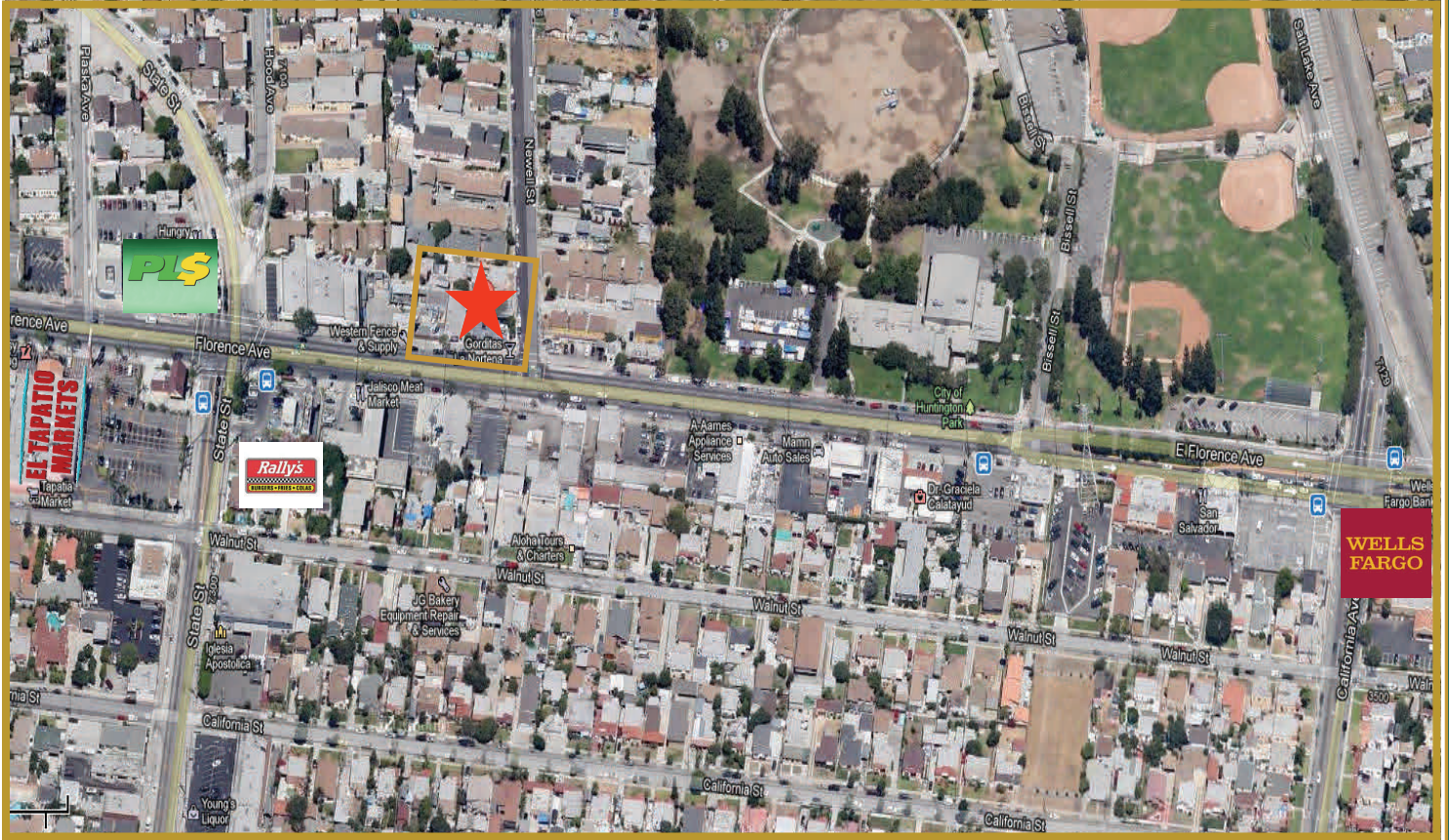


Demographics

Demographic Snapshot Comparison Report for My Site, 3301 E Florence Ave, Huntington Park, CA, 90255:

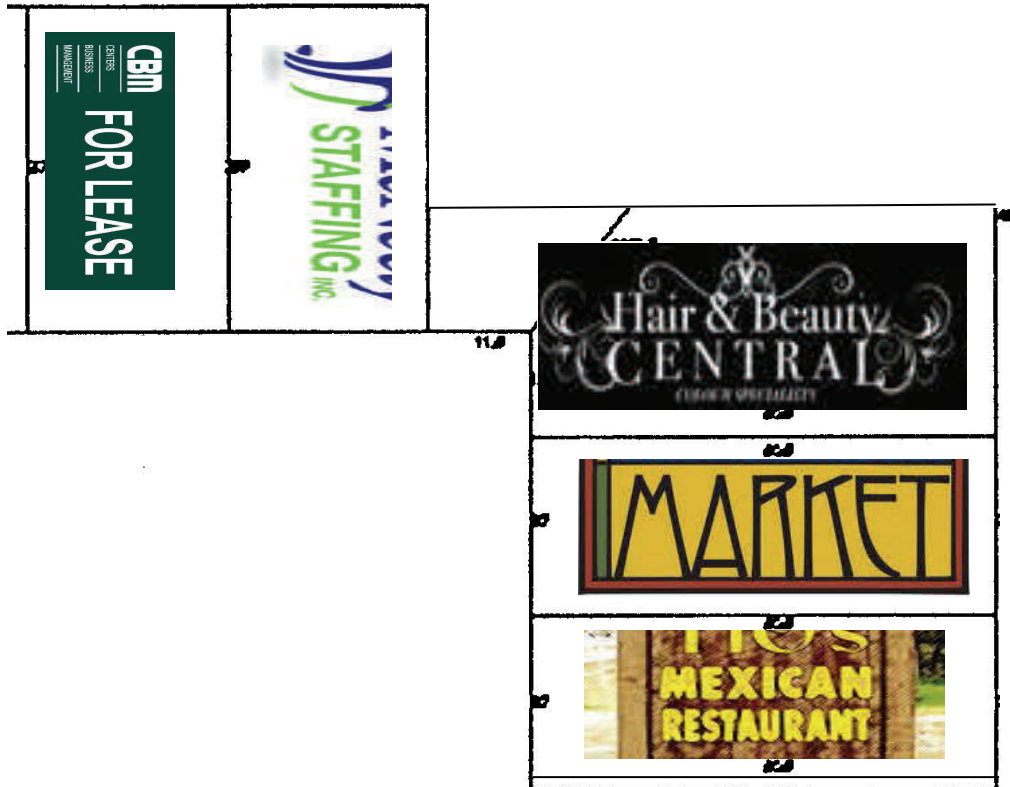
	1 mile(s)	3 mile(s)	5 mile(s)
Population: 2015B			
Total Population	67,413	399,632	1,064,814
Female Population	49.90%	50.14%	50.32%
Male Population	50.10%	49.86%	49.68%
Population Density	21,456	14,132	13,556
Population Median Age	30.0	28.4	28.6
Employed Civilian Population 16+	27,361	149,796	397,415
% White Collar	40.0%	35.2%	36.3%
% Blue Collar	60.0%	64.8%	63.7%
Total Employees	7,456	96,140	262,177
Total Establishments*	1,035	8,336	24,279
Population Growth 2000-2010	-2.35%	-0.45%	2.62%
Population Growth 2015B-2020	-0.35%	0.74%	1.19%
Income: 2015B			
Average Household Income	\$52,027	\$48,677	\$49,150
Median Household Income	\$38,647	\$36,556	\$35,552
Per Capita Income	\$12,984	\$11,601	\$12,003
Avg Income Growth 2000-2010	29.82%	28.95%	29.62%
Avg Income Growth 2015B-2020	16.93%	17.43%	17.98%
Households: 2015B			
Households	16,663	94,477	256,541
Average Household Size	3.98	4.15	4.05
Hhld Growth 2000-2010	-0.14%	1.78%	2.85%
Hhld Growth 2015B-2020	-0.06%	0.84%	1.27%
Housing Units: 2015B			
Occupied Units	16,663	94,477	256,541
% Occupied Units	98.76%	98.04%	96.96%
% Vacant Housing Units	1.24%	1.96%	3.04%
Owner Occ Housing Growth 2000-2010	-1.60%	0.55%	0.50%
Owner Occ Housing Growth 2000-2020	-8.12%	-2.59%	-0.34%
Owner Occ Housing Growth 2015B-2020	-1.71%	-0.01%	0.50%
Occ Housing Growth 2000-2010	-0.14%	1.78%	2.85%
Occ Housing Growth 2010-2020	2.53%	3.71%	4.65%
Occ Housing Growth 2015B-2020	-0.06%	0.84%	1.27%
Race and Ethnicity: 2015B			
% American Indian or Alaska Native Population	1.18%	1.01%	0.96%
% Asian Population	0.54%	0.55%	0.93%
% Black Population	0.56%	4.29%	9.99%
% Hawaiian or Pacific Islander Population	0.07%	0.06%	0.11%
% Multirace Population	3.60%	3.90%	3.85%
% Other Race Population	40.88%	44.58%	43.38%
% White Population	53.16%	45.61%	40.79%
% Hispanic Population	96.51%	93.47%	86.81%
% Non Hispanic Population	3.49%	6.53%	13.19%

Arial



Site Plan

Florence Ave



Newell St